

DRAWING NUMBER  
J-97-50-21-3

SCALE  
N.T.S.

CHKD

DRAWN  
TCC

DATE  
12-27-83

NO 97 DRAW CATCH ~ MOUNTING SPECIFICATIONS  
WITH HOOKED SPRING  
ASSEMBLIES WITH SNAP-LOCK

DATE  
12-27-83

**SOUTHCO**

LEVER STYLE	SPRING RATING	SPRING LENGTH	KEEPER WITH ONE MOUNTING HOLE	L <sub>1</sub>	KEEPER WITH ONE LUG AND ONE HOLE	L <sub>2</sub>
ACTUATING TAB UP	LIGHT DUTY	SHORT	97-50-114-2X	47.6/1 7/8	97-50-115-XX	38.1/1 1/2
		MEDIUM	97-50-124-2X	60.3/2 3/8	97-50-125-XX	50.8/2
		LONG	97-50-134-2X	73.0/2 7/8	97-50-135-XX	63.5/2 1/2
	HEAVY DUTY	SHORT	97-50-154-21	47.6/1 7/8	97-50-155-21	38.1/1 1/2
		MEDIUM	97-50-164-21	60.3/2 3/8	97-50-165-21	50.8/2
		LONG	97-50-174-21	73.0/2 7/8	97-50-175-21	63.5/2 1/2
ACTUATING TAB DOWN	LIGHT DUTY	SHORT	97-50-214-2X	47.6/1 7/8	97-50-215-XX	38.1/1 1/2
		MEDIUM	97-50-224-2X	60.3/2 3/8	97-50-225-XX	50.8/2
		LONG	97-50-234-2X	73.0/2 7/8	97-50-235-XX	63.5/2 1/2
	HEAVY DUTY	SHORT	97-50-254-21	47.6/1 7/8	97-50-255-21	38.1/1 1/2
		MEDIUM	97-50-264-21	60.3/2 3/8	97-50-265-21	50.8/2
		LONG	97-50-274-21	73.0/2 7/8	97-50-275-21	63.5/2 1/2

DRAWING NUMBER  
J-97-50-21-3

SCALE  
N.T.S.

CHKD

DRAWN  
TCC

DATE  
12-27-83

NO 97 DRAW CATCH ~ MOUNTING SPECIFICATIONS  
WITH HOOKED SPRING  
ASSEMBLIES WITH SNAP-LOCK

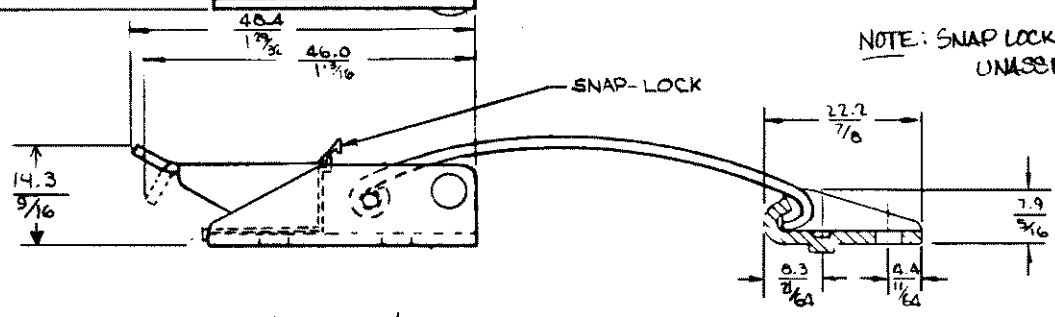
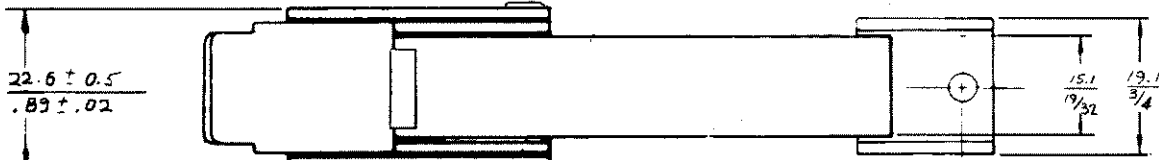
DATE  
12-27-83

**SOUTHCO**

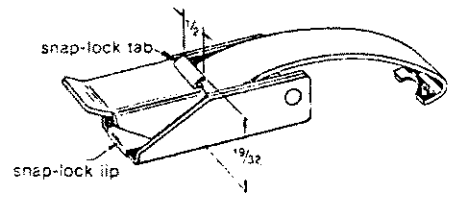
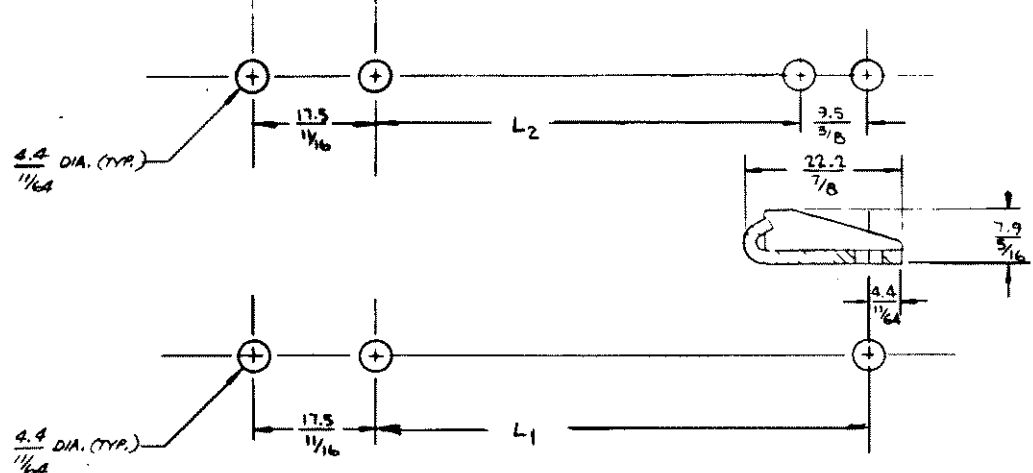
PROPRIETARY ITEM - EXCEPT FOR USES EXPRESSLY GRANTED IN WRITING, INFORMATION DISCLOSED HEREON IS CONFIDENTIAL AND ALL RIGHTS, PATENT AND OTHERWISE, ARE RESERVED BY SOUTHCO, INC.

REV A 4-24-84 DEM  
REV B 11-4-86 JSS  
REV C 5-22-80 RMP  
REV D 97-109  
REV E 97-150

PART NUMBER SUFFIX INDICATES MATERIAL & FINISH  
21- LEVER, BASE, SPRING AND KEEPER-STEEL, ZINC PLATE, BRIGHT. PIN & RIVET-S/S; NATURAL  
SNAP LOCK-STEEL, ZINC PLATE PLUS BLACK ORGANIC COATING.  
22- LEVER, BASE AND SPRING- STAINLESS STEEL, PASSIVATE.  
PIN AND RIVET- STAINLESS STEEL, NATURAL. SNAP LOCK- STAINLESS STEEL, BLACK ORGANIC COATING



NOTE: SNAP LOCK SHIPPED UNASSEMBLED



**To Install**  
While installing latch base, position turned down tip of snap-lock against rear edge of base to align mounting holes. Insert mounting screw or rivet through both parts.

To open, push snap-lock tab forward and lift latch lever.

To close, just push lever back down, snap-lock will spring to locked position.

mm  
INCH