

Southco

PROPRIETARY ITEM - EXCEPT FOR USES EXPRESSLY GRANTED IN WRITING INFORMATION DISCLOSED HEREON IS CONFIDENTIAL AND ALL RIGHTS PATENT AND OTHERWISE ARE RESERVED BY SOUTHCO, INC.

No. E5 QUAD LATCH
CUP STYLE

DATE: 04SEP2008
DRAWN: ACH
CHKD: JV

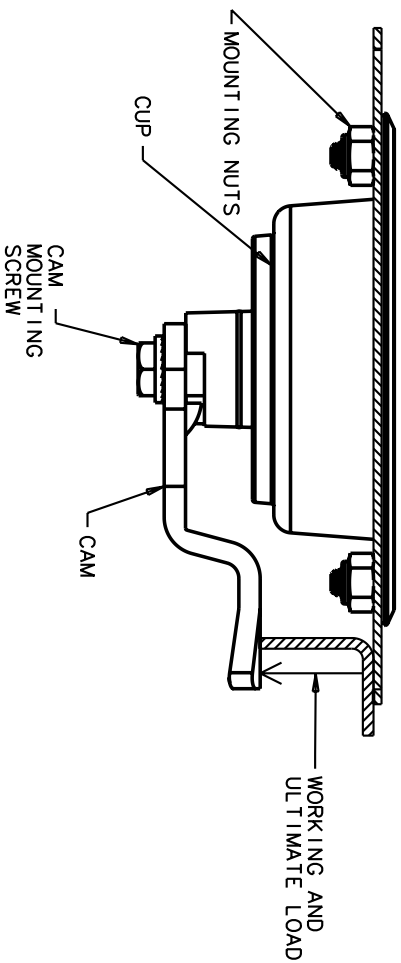
DRAWING NUMBER: TD-E5-9-3-J

REV	DATE	DRAWN/CHKD	DESCRIPTION
A	04SEP2008	ACH/MJS	INITIAL DRAWING RELEASE
B	16OCT2008	JHV	VERIFICATION TESTING
C	29OCT2008	JHV	STATIC WORKING LOAD TEXT

THIRD ANGLE PROJECTION
A4 PAPER SIZE

SOUTHCO PERFORMANCE GUIDELINES

THE PERFORMANCE GUIDELINES SHOWN ON THIS PAGE ARE SUPPLIED AS A GENERAL GUIDE ONLY, AS CONDITIONS VARY WITH EACH APPLICATION AND METHOD OF INSTALLATION. STRENGTH DATA GIVEN IS FOR FAILURE OF THE PRODUCT OR FOR SUFFICIENT DEFORMATION TO MAKE PRODUCT INOPERABLE. NO SAFETY FACTOR HAS BEEN APPLIED IT IS RECOMMENDED THAT THE USER REQUEST A PRODUCT SAMPLE FOR TESTING TO DETERMINE THE SUITABILITY OF THE PRODUCT FOR THE PURPOSE INTENDED AND USER'S PARTICULAR APPLICATION.



TEST DESCRIPTION	E5-91-3X5-YY1
	E5-92-3X5-YY1
① MAXIMUM RECOMMENDED STATIC WORKING LOAD	225 N
② AVERAGE ULTIMATE LOAD	300 N
MAXIMUM RECOMMENDED MOUNTING NUT TIGHTENING TORQUE	3 N·m
③ MAXIMUM RECOMMENDED CAM SCREW TIGHTENING TORQUE	10 N·m
CYCLE LIFE	15,000 AT 50 N LOAD

- ① MAXIMUM RECOMMENDED STATIC WORKING LOAD IS THE MAXIMUM RECOMMENDED LOAD AFTER ONE TIME APPLICATION AND REMOVAL OF WHICH, THE PRODUCT CONTINUES TO FUNCTION PROPERLY.
- ② AVERAGE ULTIMATE LOAD CAUSES FAILURE OF THE PRODUCT OR SUFFICIENT DEFORMATION TO MAKE THE PRODUCT INOPERABLE.

REF: TR E5-55
TR E5-56
TR E5-57