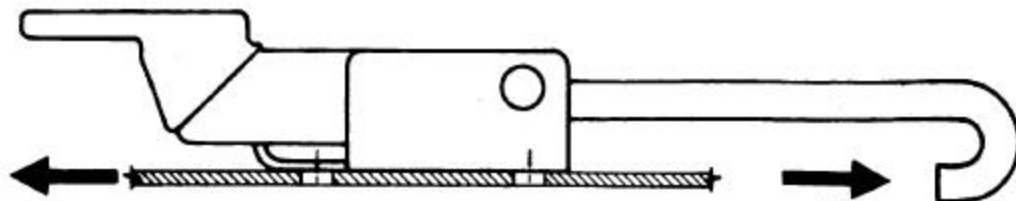
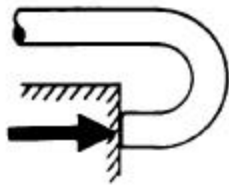


GENERAL PERFORMANCE GUIDELINES

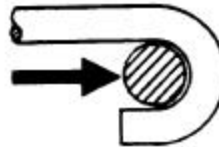
The information shown on this page was determined under one set of test conditions and is supplied as a general guide only, as conditions vary with each application. Strength data given is for failure of the product or for sufficient deformation to make the product inoperable. No safety factor has been applied. It is recommended that the user test the product for his particular application.



Latch Part No. A1-11-702-20



Condition A



Condition B

LATCH CONDITION	LOAD AT WHICH LATCH YIELDS
A	400 lbs.
B	700 lbs.