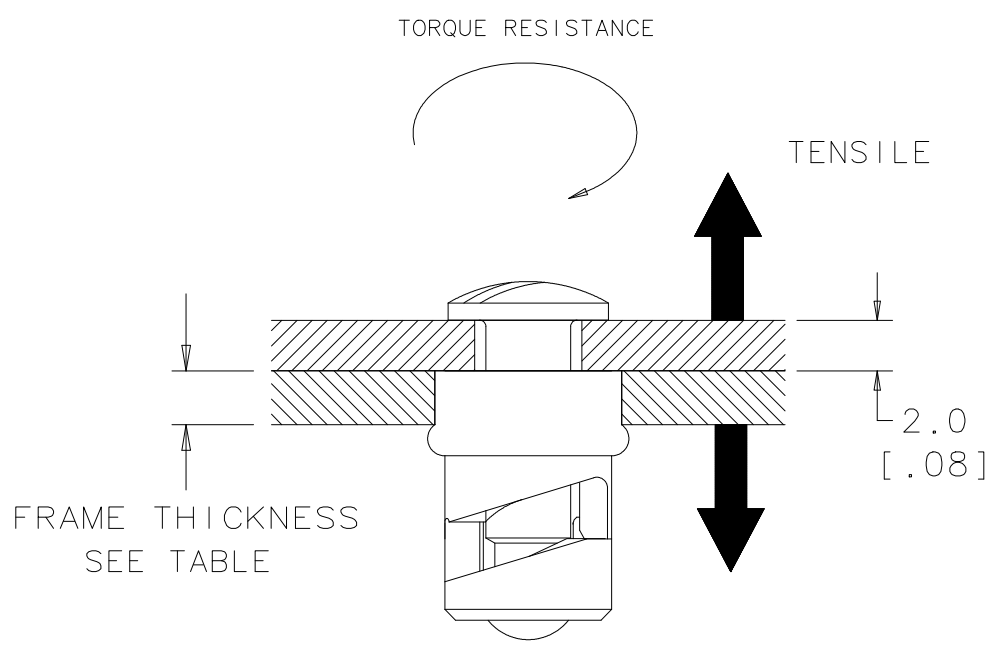


REV A	DATE 26JUN2017	DRAWN/CHKD CMS/JCG	DESCRIPTION PRN: P2017-1527	NO. 84 SWELL LATCH 20 SERIES	DATE 26JUN2017	DRAWN CMS	CHKD CTG	SCALE NTS	DRAWING NUMBER TD-84-20

PROPRIETARY ITEM - EXCEPT FOR USES EXPRESSLY GRANTED IN WRITING, INFORMATION DISCLOSED HEREON IS CONFIDENTIAL AND ALL RIGHTS, PATENT AND OTHERWISE ARE RESERVED BY SOUTHCO, INC.

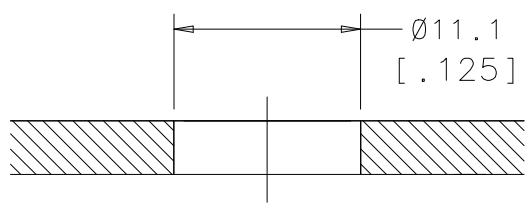


SOUTHCO PERFORMANCE GUIDELINES
 THE PERFORMANCE GUIDELINES SHOWN ON THIS PAGE ARE SUPPLIED AS A GENERAL GUIDE ONLY, AS CONDITIONS VARY WITH EACH APPLICATION AND METHOD OF INSTALLATION. STRENGTH DATA GIVEN IS FOR FAILURE OF THE PRODUCT OR FOR SUFFICIENT DEFORMATION TO MAKE PRODUCT INOPERABLE. NO SAFETY FACTOR HAS BEEN APPLIED. IT IS RECOMMENDED THAT THE USER REQUEST A PRODUCT SAMPLE FOR TESTING TO DETERMINE THE SUITABILITY OF THE PRODUCT FOR THE PURPOSE INTENDED AND USER'S PARTICULAR APPLICATION.



FRAME PREPARATION

WHEN FRAME THICKNESS IS 3.2 [.125] OR LESS



PART NUMBER	FRAME THICKNESS mm (in)	AVERAGE ENGAGEMENT TORQUE Ncm (IN-LBS)	AVERAGE ULTIMATE LOAD N (LBS)
84-20-XXX-10	1.57 [.062]	30 [2.6]	270 [60]

* RATED LOAD DETERMINED AT A TEST 20mm/MIN [.8in/min]