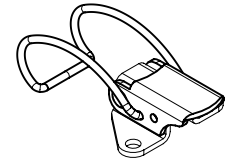
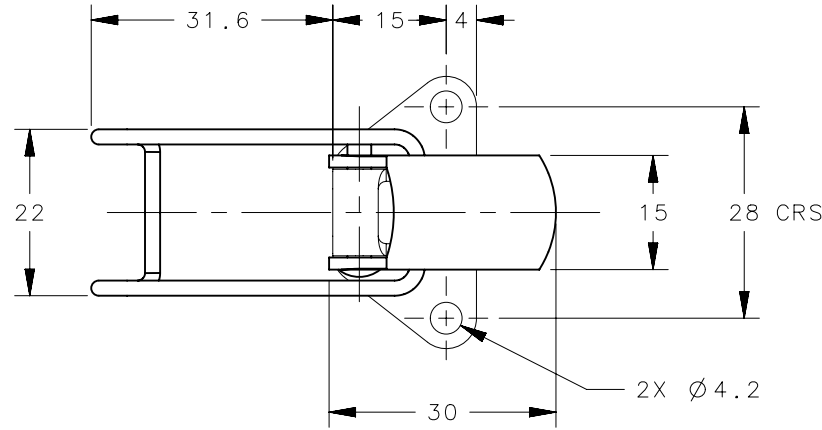
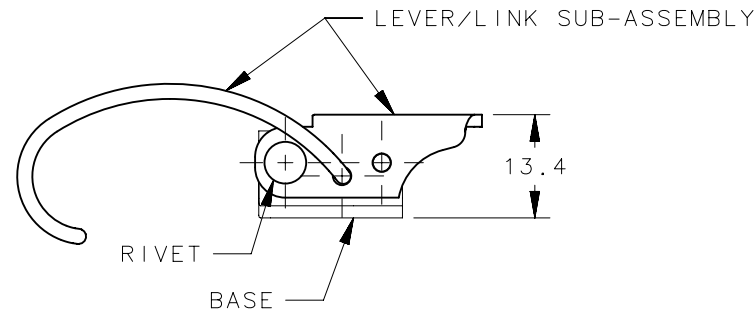


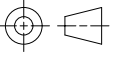

REVISION HISTORY			
REV	DATE	BY	DESCRIPTION
B	24MAR2016	DKM/YGC	PRN: P2016-0651



SCALE 1:2



TL-20-105-34	TOGGLE LATCH ASSEMBLY	CARBON STEEL	ZINC PHOSPHATE PLUS ZINC FLAKE COATING PLUS SEALER
TL-20-105-52	TOGGLE LATCH ASSEMBLY	CARBON STAINLESS	CLEAN
TL-20-105-07	TOGGLE LATCH ASSEMBLY	CARBON STEEL	ZINC PLATE & TRIVALENT PASSIVATE
PART NUMBER	TYPE OF COMPONENT	MATERIAL	FINISH

THIRD ANGLE PROJECTION 		 CONNECT • CREATE • INNOVATE	
MILLIMETERS [IN]			
SURFACE AREA		DESCRIPTION TOGGLE LATCH ASSEMBLY	
VOLUME		TOLERANCES UNLESS OTHERWISE NOTED ALL DIMENSIONS WITHOUT TOLERANCES ARE FOR REFERENCE ONLY.	
PROPRIETARY ITEM <small>EXCEPT FOR USES EXPRESSLY GRANTED IN WRITING, INFORMATION DISCLOSED HEREON IS CONFIDENTIAL AND ALL RIGHTS, PATENT AND OTHERWISE, ARE RESERVED BY SOUTHCO, INC.</small>		SIZE A4 SYSTEM NX DWG NO. J-TL-20-105-XX	DRAWN BY MJW DATE 08AUG2005 SCALE 1:1 SHEET 1 OF 1
PER ASME Y14.5M-1994			