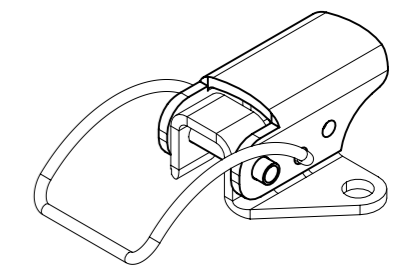
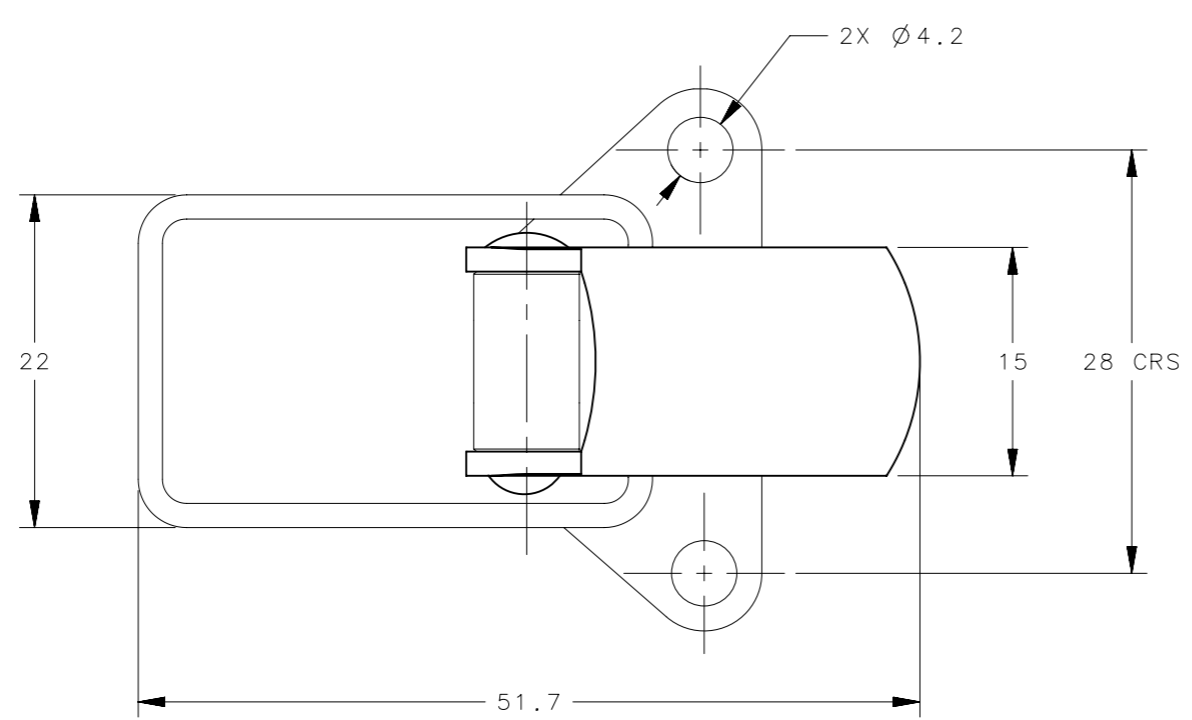
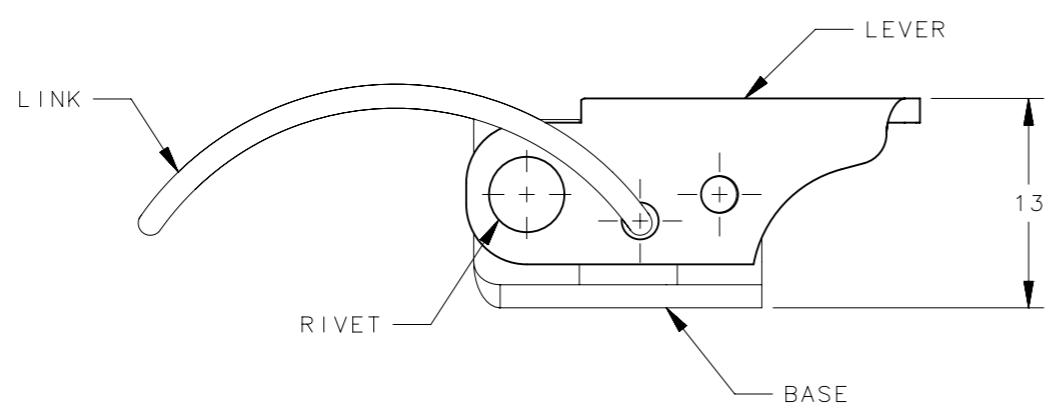


REVISION HISTORY			
REV	DATE	BY	DESCRIPTION
A	19APR2017	DKM/YGC	PRN: P2017-0940



SCALE 1:1



TL-20-103-52	TOGGLE LATCH ASSEMBLY	STAINLESS STEEL	CLEAN
TL-20-103-24	TOGGLE LATCH ASSEMBLY	STAINLESS STEEL	ELECTROPOLISH
TL-20-103-13	TOGGLE LATCH ASSEMBLY	STEEL	ZINC PLATE PLUS BLACK CHROMATE
TL-20-103-10	TOGGLE LATCH ASSEMBLY	STEEL	CHROME PLATE
TL-20-103-07	TOGGLE LATCH ASSEMBLY	STEEL	ZINC PLATE PLUS BRIGHT CHROMATE
PART NUMBER	TYPE OF COMPONENT	MMATERIAL	FINISH

THIRD ANGLE PROJECTION		 CONNECT • CREATE • INNOVATE	
MILLIMETERS [IN]			
TOLERANCES UNLESS OTHERWISE NOTED		DESCRIPTION TOGGLE LATCH ASSEMBLY	
ALL DIMENSIONS WITHOUT TOLERANCES ARE FOR REFERENCE ONLY.		SIZE A3	SYSTEM NX
PER ASME Y14.5M-1994		DWG NO. J-TL-20-103	DATE 19APR2017
DRAWN BY DKM/YGC		SCALE 2:1	SHEET 1 OF 1

PROPRIETARY ITEM
EXCEPT FOR USES EXPRESSLY GRANTED
IN WRITING, INFORMATION DISCLOSED
HEREON IS CONFIDENTIAL AND ALL
RIGHTS, PATENT AND OTHERWISE,
ARE RESERVED BY SOUTHCO, INC.