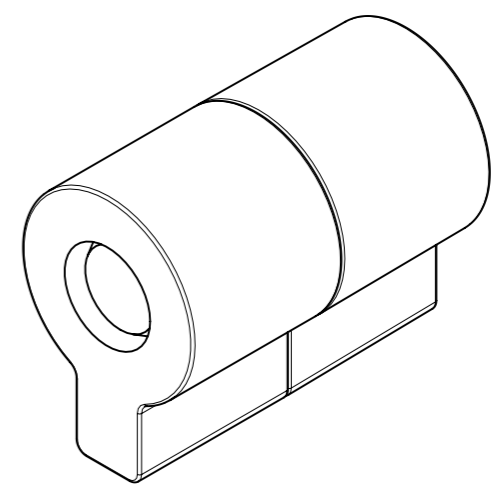
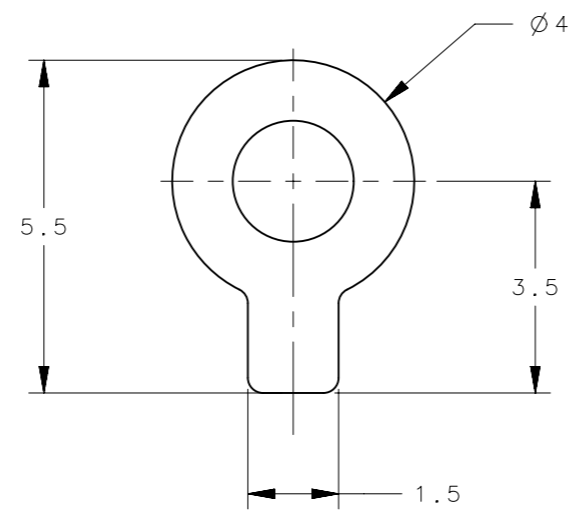
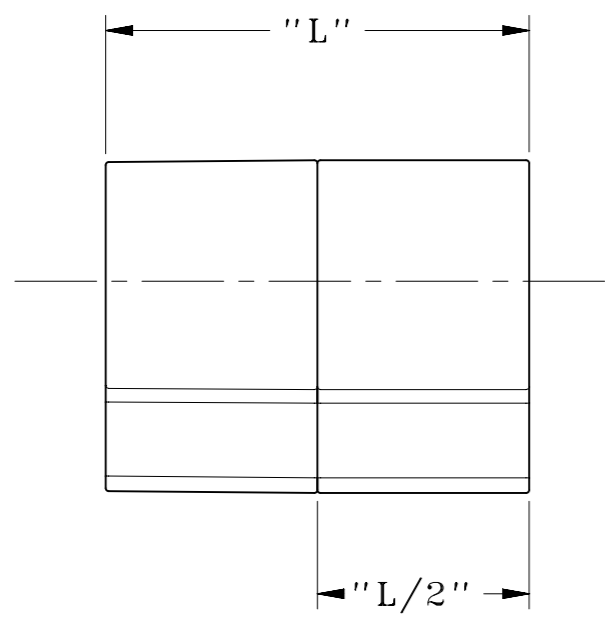
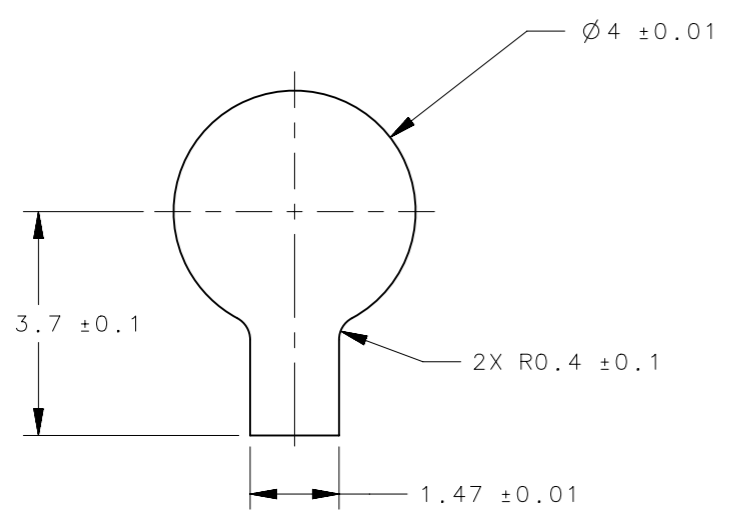


REVISION HISTORY			
REV	DATE	BY	DESCRIPTION
F	15MAY2020	MJS/JJT	PRN: P2020-0871



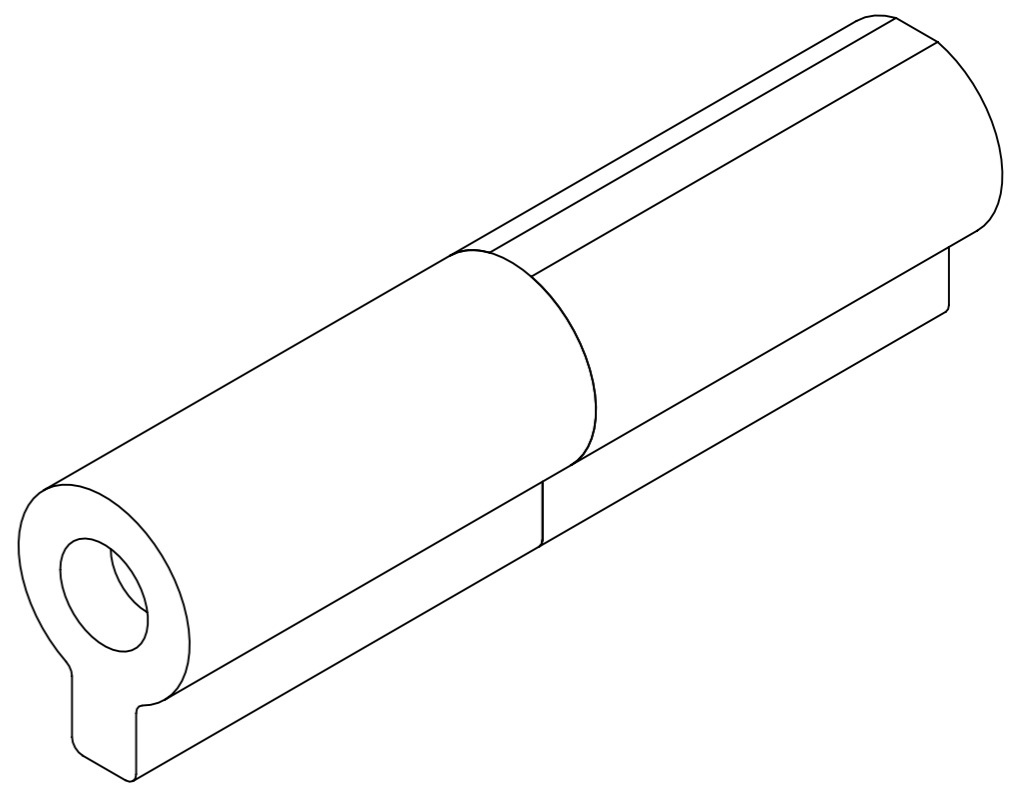
ST-4A-3S-33



1/2 DEGREE MAXIMUM DRAFT
 (3.45 MAX DEPTH VALUE FOR ST-4A-3S-33)
 (9.45 MAX DEPTH VALUE FOR ST-4A-8S-33)

**PANEL PREPARATION
 (POLYMERS)**

- NOTES :
1. MATERIAL: HOUSING- ZINC ALLOY
 ADAPTER- ALUMINUM
 SHAFT- HARDENED STEEL
 TORQUE ELEMENTS- HARDENED STEEL
 2. FINISH- NATURAL
 3. FOR MOUNTING IN MATERIALS OTHER THAN POLYMERS
 CONTACT SOUTHCO FOR DETAILS.



ST-4A-8S-33

ST-4A-3S-33	0.3±0.2	7
ST-4A-8S-33	0.75±0.2	19
PART NUMBER	TORQUE (IN-LBF)	"L"

THIRD ANGLE PROJECTION		southco [®] CONNECT • CREATE • INNOVATE	
MILLIMETERS [IN]			
SURFACE AREA	TOLERANCES UNLESS OTHERWISE NOTED	DESCRIPTION	
VOLUME	ALL DIMENSIONS WITHOUT TOLERANCES ARE FOR REFERENCE ONLY.	ST-4A HINGE ASSEMBLY	
PROPRIETARY ITEM	PER ASME Y14.5M-1994	SIZE A3	SYSTEM NX
EXCEPT FOR USES EXPRESSLY GRANTED IN WRITING, INFORMATION DISCLOSED HEREON IS CONFIDENTIAL AND ALL RIGHTS, PATENT AND OTHERWISE, ARE RESERVED BY SOUTHCO, INC.		DWG NO. J-ST-4A	
		DRAWN BY CMW	DATE 16JUN2005
		SCALE 8:1	SHEET 1 OF 1