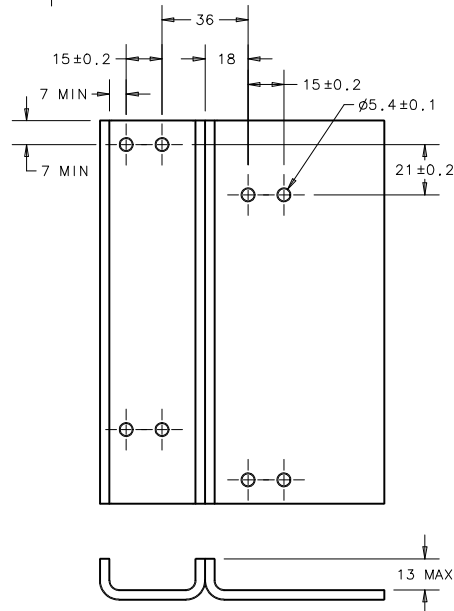
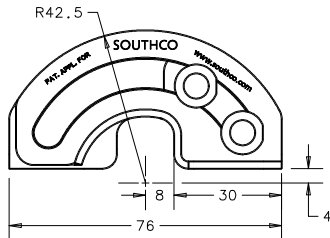
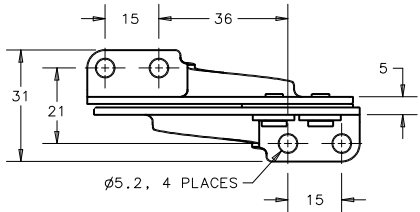


	REV.	DATE	DRAWN	REVISION	COMPONENT	MATERIAL	IF FINISH/COLOR	CONCEALED 90 DEGREE OPENING HINGE TRADE DRAWING	DATE	DRAWN	CHRD	SCALE	DRAWING NUMBER
					ROLLER LEAF CAM LEAF RIVET (2) WASHER BUSHING (2)	SEE NOTE A SEE NOTE A 300 SERIES STAINLESS STEEL ACETAL	SEE NOTE A SEE NOTE A NATURAL BLACK		150EC0200	R/JB	NTS	J-R6-21-1	
PROPRIETARY ITEM - EXCEPT FOR USES EXPRESSLY GRANTED IN WRITING, INFORMATION DISCLOSED HEREON IS CONFIDENTIAL AND ALL RIGHTS, PATENT AND OTHERWISE ARE RESERVED BY SOUTHCO, INC.					DIMENSIONS WITHOUT TOLERANCES ARE FOR REFERENCE ONLY.								
					MILLIMETER DIMENSIONS								
					THIRD ANGLE PROJECTION								
					A3 PAPER SIZE								

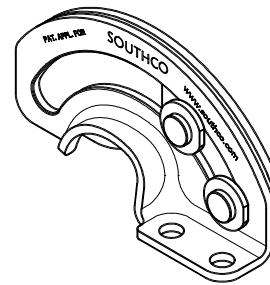
DRAWING NUMBER
J-R6-21-1

NOTE A: PART NUMBER MATERIAL & FINISH
 R6-21-11 STEEL, ZINC PLATE
 R6-21-23 300 SERIES STAINLESS STEEL, NATURAL

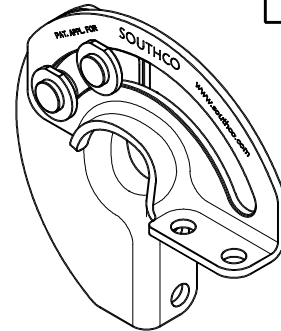


PANEL PREPARATIONS

1. MAX PANEL THICKNESS 4mm UNLESS CHAMFERED 45° AS SHOWN ON FAR RIGHT.
2. PREPARE DOOR AND FRAME AS SHOWN.
3. INSTALL USING M5 OR No. 10 HARDWARE (NOT SUPPLIED) OR BY WELDING.



CLOSED POSITION



OPEN POSITION

