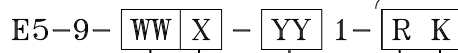


REV	DATE	DRAWN/CHKD	DESCRIPTION
B	18DEC2007	CW/MJS	PRN: P2007-1539
C	08JAN2008	CW/MJS	PRN: P2008-0027
D	10SEP2008	DSR/TVA	PRN: P2008-1006
E	19NOV2008	TVA/MJS	PRN: P2008-1229
F	03FEB2009	ACH/MJS	PRN: P2009-0117

PART NUMBER:



OMITTED WHEN WW=70 OR 73

ACTUATION STYLE (SEE BELOW)

CAM STYLE (SEE BELOW)

KEY REMOVAL: 1 = LOCKED/UNLOCKED POSITION

MATERIAL AND FINISH:
2 = DIE CAST ZINC, BRIGHT CHROME PLATE
5 = DIE CAST ZINC, BLACK POWDER COATED

KEY OPTIONS:
0 = NO KEYS INCLUDED, ORDER SEPARATELY
3 = 1 KEY PER LOCK (PLASTIC OVERMOLDED)

MILLIMETERS

ALL DIMENSIONS WITHOUT TOLERANCES ARE FOR REFERENCE ONLY.

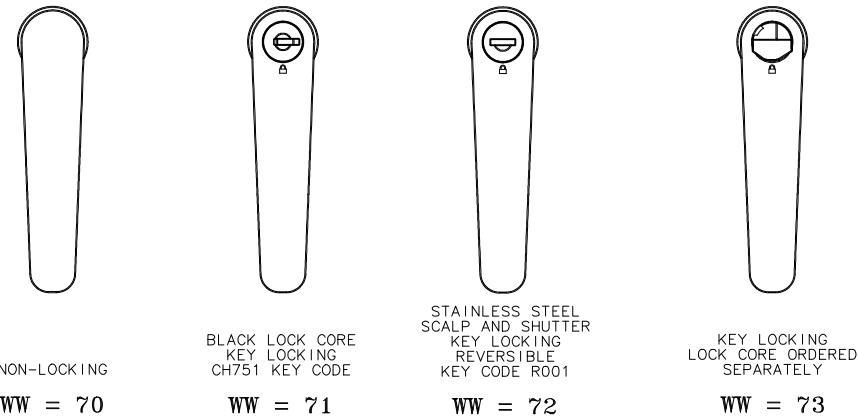
THIRD ANGLE PROJECTION
A3 PAPER SIZE
SHEET 1 OF 4

NOTES:

- A. DRIVER AND HOUSING ARE POWDER COATED BLACK ABOVE SECTION A-A (2 THREADS MAX. ON HOUSING.)
- B. "UU" CAM TYPE INDICATES THAT THE CAM IS ORDERED AND SHIPPED SEPARATELY.
- C. FOR CAM PART NUMBER SEE GRIP TABLE.
- D. FOR KEY INFORMATION REFER TO J-PK-10-01 (PLASTIC OVERMOLDED).
- E. COSMETIC SPECIFICATION:
ALL SURFACES ABOVE A-A, CONFORM TO A CLASS "B" DESIGNATION AS DESCRIBED IN SOUTHCO COSMETIC SPECIFICATION:
S-121-01 FOR X = 2
S-121-03 FOR X = 5

WW ACTUATION STYLE

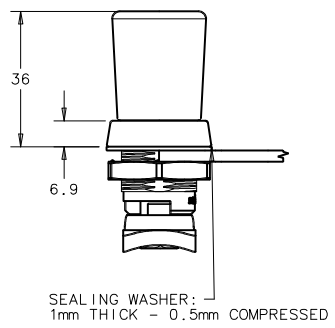
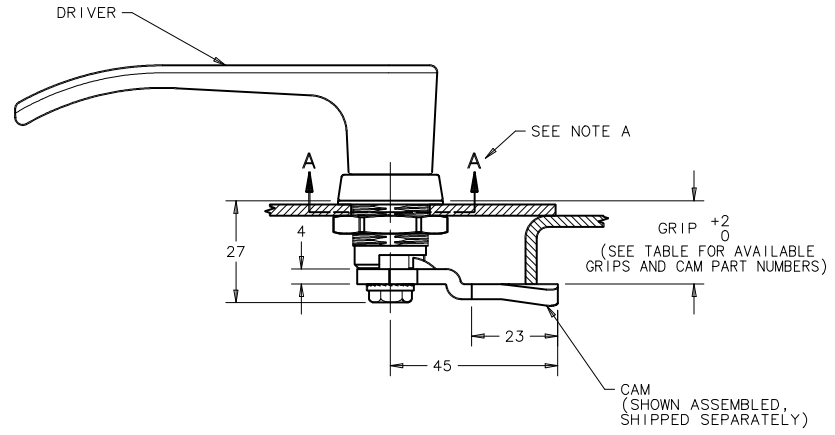
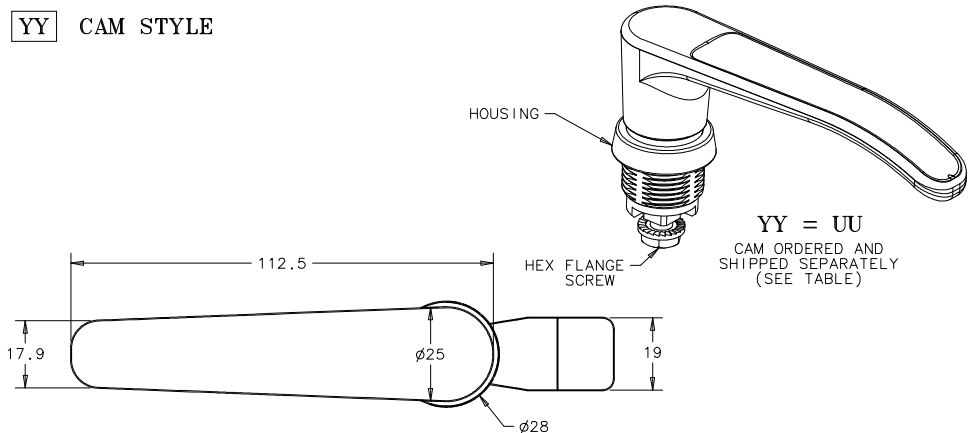
SCALE 0.5:1



YY CAM STYLE

CAM PART NUMBER: E5-60YY

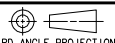
YY	GRIP	YY	GRIP
03	4mm	13	24mm
04	6mm	14	26mm
05	8mm	15	28mm
06	10mm	16	30mm
07	12mm	17	32mm
08	14mm	18	34mm
09	16mm	19	36mm
10	18mm	20	38mm
11	20mm	21	40mm
12	22mm	22	42mm



REV	DATE	DRAWN/CHKD	DESCRIPTION
B	18DEC2007	CW/MJS	PRN: P2007-1539
C	08JAN2008	CW/MJS	PRN: P2008-0027
D	10SEP2008	DSR/TVA	PRN: P2008-1006
E	19NOV2008	TVA/MJS	PRN: P2008-1229
F	03FEB2009	ACH/MJS	PRN: P2009-0117

MILLIMETERS

ALL DIMENSIONS WITHOUT TOLERANCES ARE FOR REFERENCE ONLY.



THIRD ANGLE PROJECTION

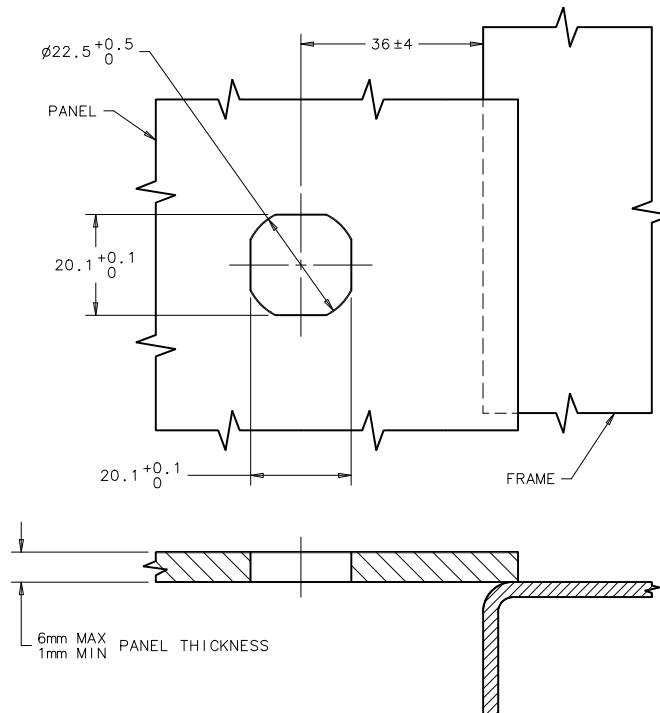
A3 PAPER SIZE

SHEET 2 OF 4

MATERIAL AND FINISH

COMPONENT	MATERIAL DESCRIPTION	FINISH DESCRIPTION	REMARKS
DRIVER	DIE CAST ZINC	CHROME PLATED	X = 2
		BLACK POWDER COAT	X = 5 (SEE NOTE A)
HOUSING	DIE CAST ZINC	CHROME PLATED	X = 2
		BLACK POWDER COAT	X = 5 (SEE NOTE A)
CAM	STEEL	ZINC PLATE, BRIGHT CHROMATE	
O-RINGS	NITRILE	BLACK	
SEALING WASHER	POLYURETHANE	BLACK	
HEX FLANGE SCREW	LOW CARBON STEEL	ZINC PLATE, BRIGHT CHROMATE	
MOUNTING NUT	DIE CAST ZINC	ZINC PLATE, BRIGHT CHROMATE	
LOCK CORE	DIE CAST ZINC	BLACK POWDER COAT	KEY LOCKING WITH LOCK CORE ASSEMBLY ONLY (WW-71 & WW-72)
SHIPPING PLUG	POLYPROPYLENE	BLACK	KEY LOCKING, NO LOCK CORE (WW-73), ASSEMBLY ONLY
LOCK EXTENDER	DIE CAST ZINC	TRIVALENT CHROMATE	KEY LOCKING ASSEMBLY ONLY (WW-71, WW-72, WW-73)
LOCK CAM	STEEL	ZINC PLATE	KEY LOCKING ASSEMBLY ONLY (WW-71, WW-72, WW-73)

PANEL PREPARATION



REV	DATE	DRAWN/CHKD	DESCRIPTION
B	18DEC2007	CW/MJS	PRN: P2007-1539
C	08JAN2008	CW/MJS	PRN: P2008-0027
D	10SEP2008	DSR/TVA	PRN: P2008-1006
E	19NOV2008	TVA/MJS	PRN: P2008-1229
F	03FEB2009	ACH/MJS	PRN: P2009-0117

LATCH INSTALLATION INTO PANEL

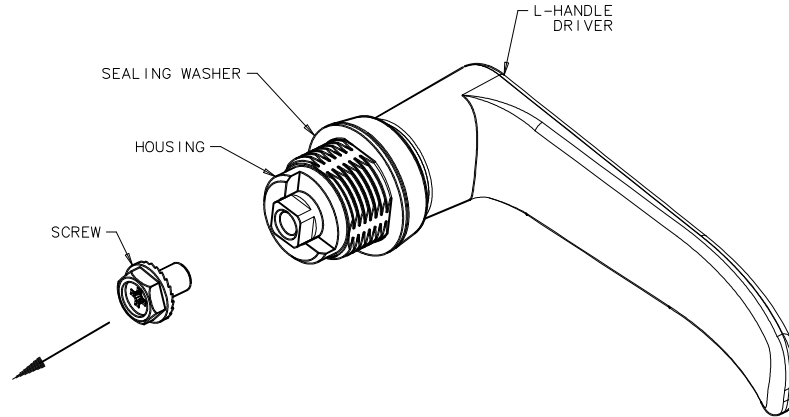
MILLIMETERS

ALL DIMENSIONS WITHOUT TOLERANCES ARE FOR REFERENCE ONLY.

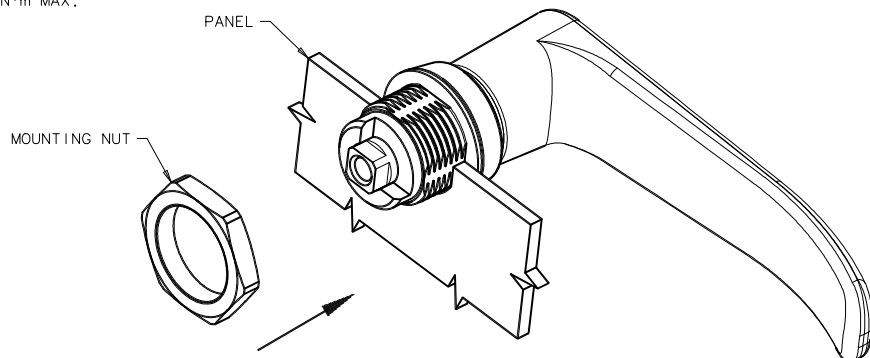
THIRD ANGLE PROJECTION
A3 PAPER SIZE
SHEET 3 OF 4

INSTALLATION METHOD:

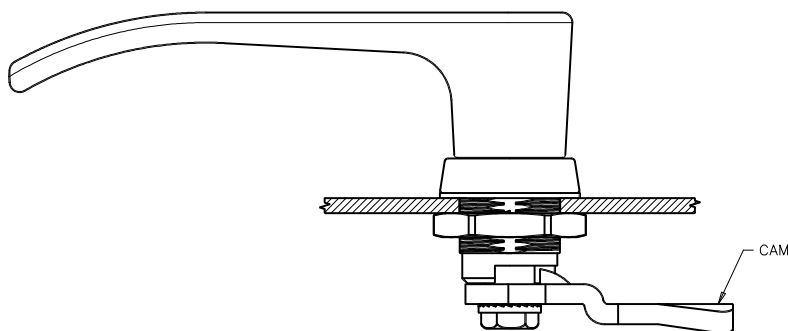
1. REMOVE SCREW FROM HOUSING.
2. PLACE SEALING WASHER ONTO LATCH HOUSING AND PLACE THROUGH MOUNTING HOLE.



3. INSTALL MOUNTING NUT AND TIGHTEN TO 10 N·m MAX.



4. ATTACH CAM TO LATCH ASSEMBLY. ENSURE THAT CAM IS ORIENTED IN DESIRED POSITION.
5. INSTALL SCREW. TIGHTEN TO 5 N·m USING 10mm HEX OR No. 2 PHILLIPS DRIVER.



REV	DATE	DRAWN/CHKD	DESCRIPTION
B	18DEC2007	CW/MJS	PRN: P2007-1539
C	08JAN2008	CW/MJS	PRN: P2008-0027
D	10SEP2008	DSR/TVA	PRN: P2008-1006
E	19NOV2008	TVA/MJS	PRN: P2008-1229
F	03FEB2009	ACH/MJS	PRN: P2009-0117

MILLIMETERS

ALL DIMENSIONS WITHOUT TOLERANCES ARE FOR REFERENCE ONLY.

THIRD ANGLE PROJECTION

A3 PAPER SIZE

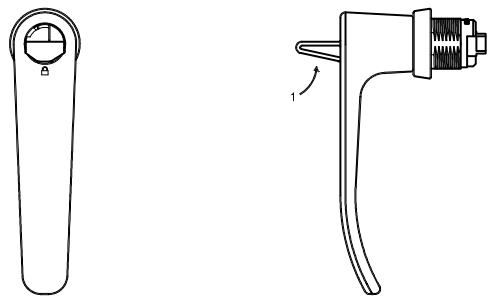
SHEET 4 OF 4

LOCK CORE INSTALLATION

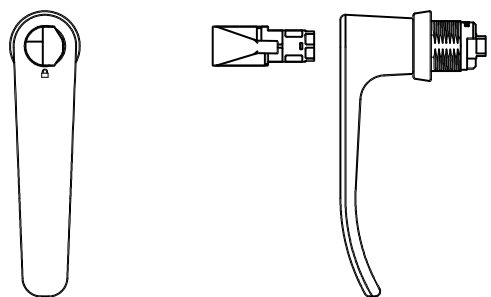
(PART No. E5-9-73X-UU1-10)

LOCK CORE INSTALLATION-

1. SQUEEZE SPRING LEG TOWARD CENTER OF PLUG.



2. WITH SPRING DEPRESSED, ROTATE PLUG 90° COUNTER CLOCKWISE AND PULL PLUG OUT OF DRIVER.



3. VERIFY ORIENTATION OF LOCK EXTENDER AS SHOWN.



4. WITH WAFERS PROTRUDING 90° CLOCKWISE FROM LOCK SYMBOL, INSERT LOCK CORE INTO DRIVER.
5. INSERT KEY INTO LOCK CORE AND TURN 90° CLOCKWISE TO VERIFY LOCK CORE IS FULLY SEATED AND OPERATING PROPERLY AFTER INSTALLATION.

