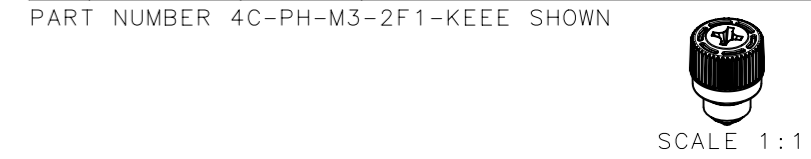
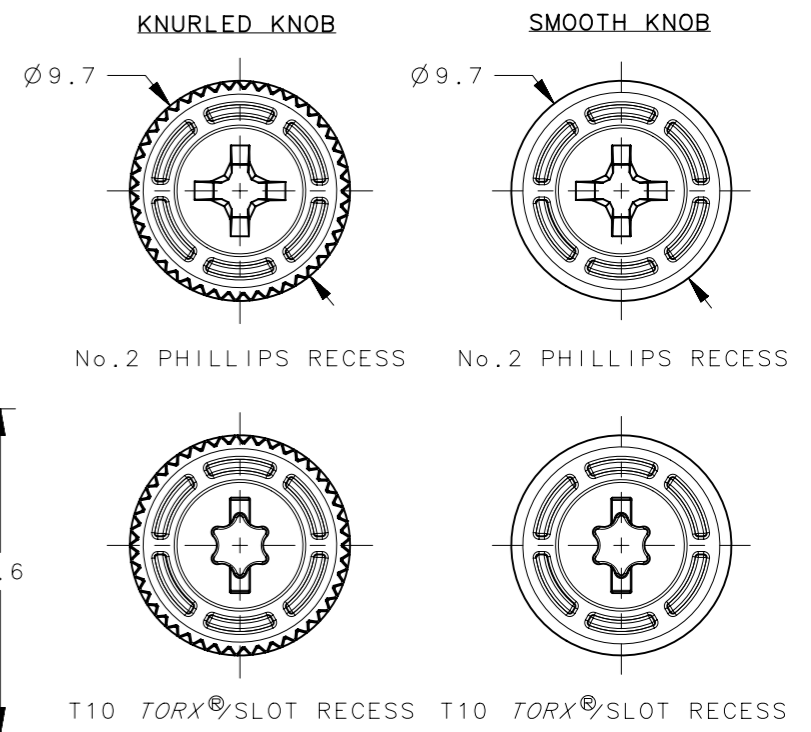
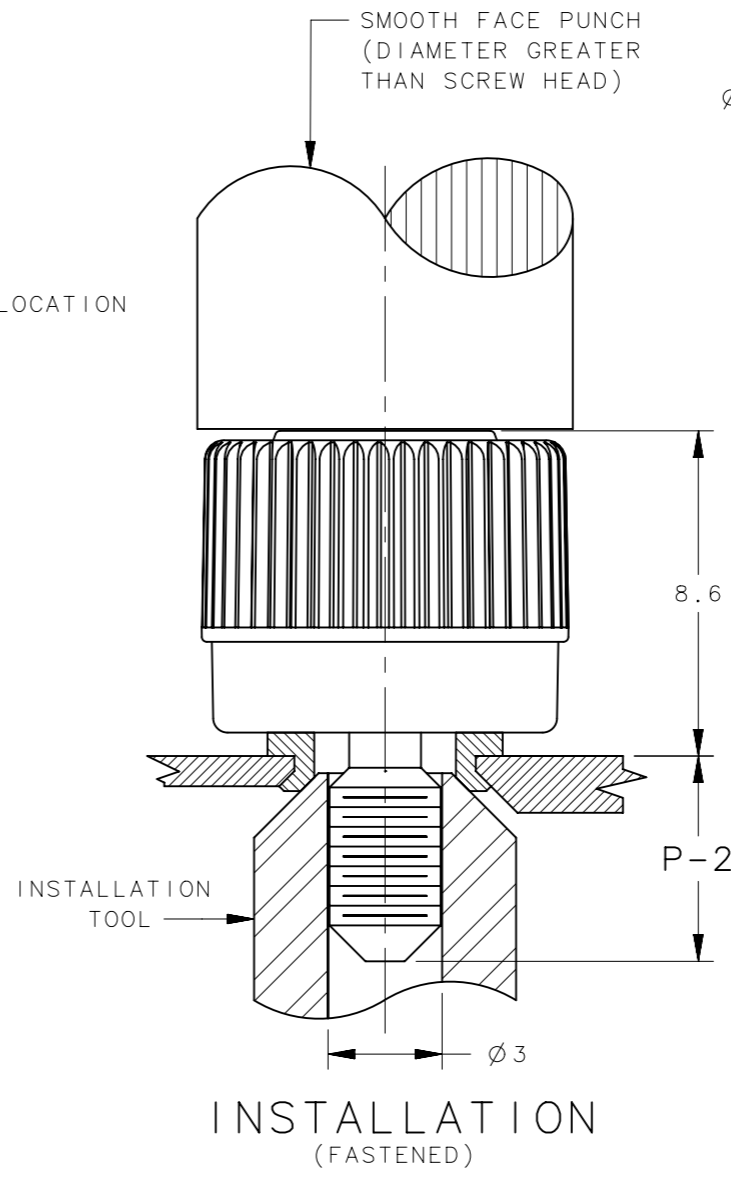
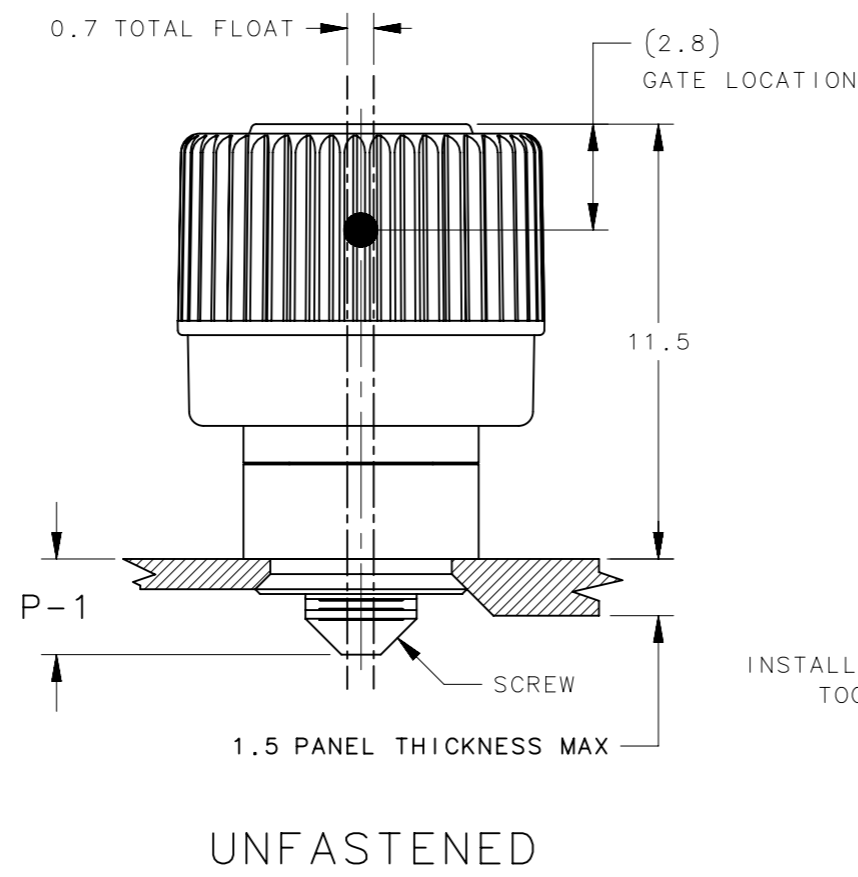
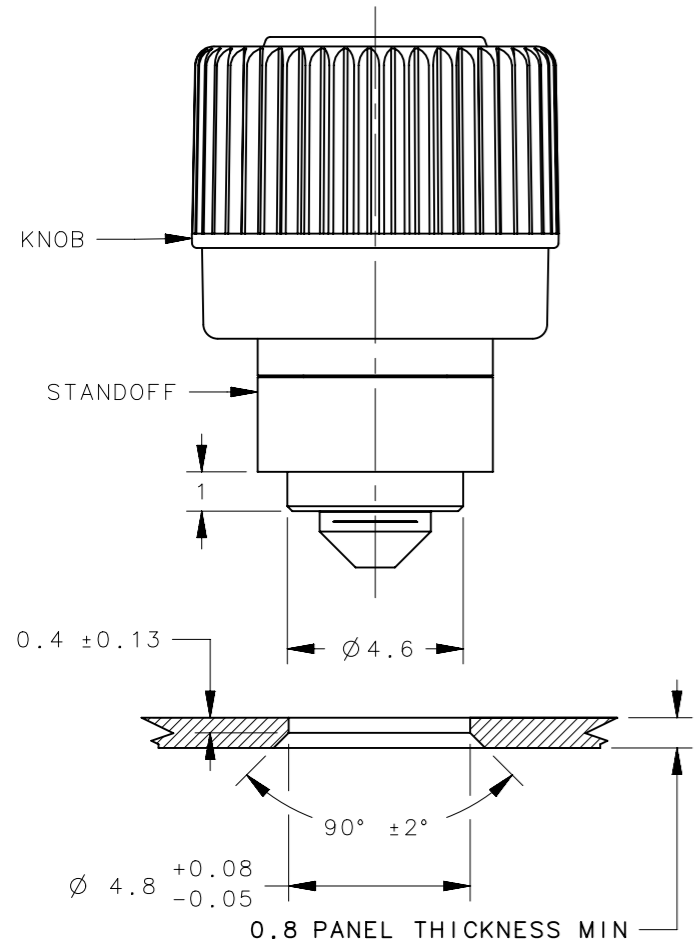


REVISION HISTORY			
REV	DATE	BY	DESCRIPTION
C	15APR2015	BGL/CMS	PRN: P2015-0769



TORX IS A REGISTERED TRADEMARK OF ACUMENT® INTELLECTUAL PROPERTIES, LLC



- NOTES:
- A. MATERIAL AND FINISH:
 KNOB: PC/ABS UL94 VO RATED, FLAME RETARDANT; TRIARYLPHOSPHATE (DOES NOT CONTAIN BROMINATED, CHLORINATED, OR HALOGENATED ADDITIVES).
 SCREW: HEAT TREATED LOW CARBON STEEL, ZINC PLATE, CHROMATE PLUS SEALER
 SPRING: 300 SERIES STAINLESS STEEL, PASSIVATED
 STANDOFF: ALUMINUM, NATURAL
 - B. INSTALLATION INSTRUCTIONS:
 1. PREPARE THE HOLE IN THE PANEL, COUNTERSINK UNDERSIDE OF THE PANEL AS SHOWN.
 2. USE SOUTHCO INSTALLATION TOOL, PART NUMBER 47-104 OR 29-47-505-10, TO FLARE THIS ASSEMBLY.
 3. PUNCH CANNOT TOUCH PLASTIC DURING INSTALLATION.
 - C. GATE NOT ORIENTED WITH RECESS OR FRAME BREAK.
 - D. FLASH HEIGHT GREATER THAN 0.3 NOT ACCEPTABLE.
 - E. SURFACE IMPERFECTIONS: INSPECT PARTS FROM 0.6 METERS FOR 3 SECONDS. FOUR SURFACE IMPERFECTIONS MAX PER PART. SURFACE IMPERFECTIONS NO LARGER THAN 2.3mm IN DIAMETER, HEIGHT OR WIDTH.
 - F. KNOB AND SCREW ARE SPRING LOADED OUTWARD, AS SHOWN ABOVE.

AA SCREW RECESS	*D* KNOB TEXTURE	*EEE* KNOB COLOR
PH - No.2 PHILLIPS RECESS	K - KNURLED	000 - BLACK
TS - T10 TORX®/SLOT RECESS	N - SMOOTH	SEE J-47-0-3 FOR DETAILS

4C-AA-M3-1F1-DEEE	0.8	3.7
4C-AA-M3-2F1-DEEE	2.5	5.4
PART NUMBER	P-1	P-2

THIRD ANGLE PROJECTION			
TOLERANCES UNLESS OTHERWISE NOTED	DESCRIPTION		
ALL DIMENSIONS WITHOUT TOLERANCES ARE FOR REFERENCE ONLY.	SOUTHCO No. 4C CAPTIVE FASTENER		
	M3 THREAD, FLARE-IN STYLE		
PROPRIETARY ITEM	SIZE	SYSTEM	DWG NO.
EXCEPT FOR USES EXPRESSLY GRANTED IN WRITING, INFORMATION DISCLOSED HEREON IS CONFIDENTIAL AND ALL RIGHTS, PATENT AND OTHERWISE, ARE RESERVED BY SOUTHCO, INC.	A3	NX	J-4C-1-M3
	PER ASME Y14.5M-1994	DRAWN BY	DATE
	DLH/FHS	14FEB2003	SCALE 5:1 SHEET 1 OF 1