

NOTES:

- A. OPERATION: 195° TURN OF KEY CAUSES PAWL TO ROTATE 75° THEN PULL UP.
- B. PAWL, NUTS, AND LOCKWASHERS SHIPPED UNASSEMBLED IN BAG WITH LATCH ASSEMBLY.
- C. INSTALLATION:
 1. INSERT LATCH INTO HOLE IN DOOR. CHECK FOR PROPER ORIENTATION AND OPERATION OF PAWL.
 2. INSTALL USING LOCKWASHER AND MOUNTING NUT (27mm ACROSS FLATS). MAX. TIGHTENING TORQUE 28 Nm.
 3. INSTALL JAM NUT, LOCKWASHER, PAWL, LOCKWASHER, AND JAM NUT ON SHAFT. ADJUST JAM NUTS TO POSITION PAWL AT CORRECT GRIP (WITH LATCH CLOSED). TIGHTEN JAM NUTS (20 Nm MAX. TORQUE) USING TWO 17mm WRENCHES.
- 4. CAUTION: ADJUST PAWL SO THAT NO MORE THAN 7.9Nm TORQUE ON DRIVER IS REQUIRED TO CLOSE LATCH.

X FINISH TABLE

- 1 - BRIGHT CHROME PLATE
- 4 - CARDINAL WHITE POWDER COAT
- 5 - BLACK POWDER COAT
- 7 - SATIN SILVER POLYESTER POWDER COAT



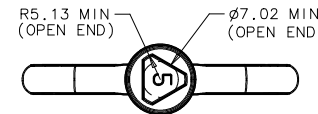
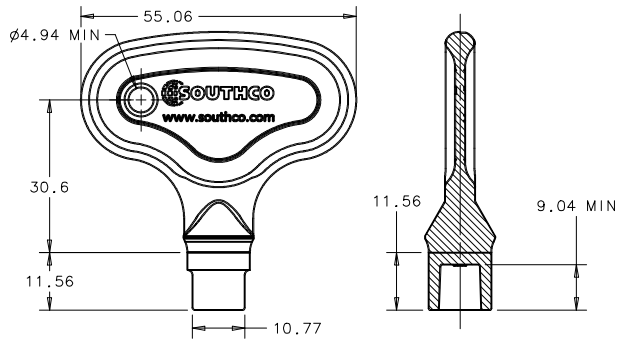
PROPRIETARY ITEM - EXCEPT FOR USES EXPRESSLY GRANTED IN WRITING, INFORMATION DISCLOSED HEREIN IS CONFIDENTIAL AND ALL RIGHTS, PATENT AND OTHERWISE ARE RESERVED BY SOUTHCO, INC.

VICE-ACTION® - LATCH
8mm TRIANGLE DRIVER

| | | | | |
|-----------|-------|------|-------|----------------|
| DATE | DRAWN | CHKD | SCALE | DRAWING NUMBER |
| 03NOV2009 | TMS | | 1:1 | J-E3-120 |

| REV | DATE | DRAWN/CHKD | DESCRIPTION | ITEM | PART NUMBER | GRIP RANGE | EXTENDED GRIP RANGE | PAWL OFF-SET |
|-----|-----------|------------|------------------------|----------------|-------------|------------|---------------------|--------------|
| A | 03NOV2009 | TMS | RELEASE FOR PRODUCTION | LATCH ASSEMBLY | E3-120-1X | 11.4-27.2 | 66.3-76.2 | 27.4 |
| B | 14FEB2012 | MJS/JW | PRN: P2012-0224 | LATCH ASSEMBLY | E3-120-2X | 25.4-41.1 | 52.6-68.3 | 13.7 |
| C | 29JAN2015 | CMS/MWD | PRN: P2015-0226 | LATCH ASSEMBLY | E3-120-3X | 38.9-54.6 | NONE | NONE |
| D | 30JUN2021 | CMS/DMS | PRN: P2021-1293 | | | | | |

| MILLIMETERS | |
|---|--|
| ALL DIMENSIONS WITHOUT TOLERANCES ARE FOR REFERENCE ONLY. | |
| | |



KEY

PART NUMBER: E3-7-1
8MM TRIANGLE TOOL
(ORDER SEPARATELY)
DIE CAST ZINC, BRIGHT NICKEL PLATE

| COMPONENT | MATERIAL | FINISH |
|---------------------|---------------------|--------------------------------------|
| HOUSING | DIE CAST ZINC | SEE FINISH TABLE |
| CAP | DIE CAST ZINC | SEE FINISH TABLE |
| RETAINER | 302 STAINLESS STEEL | NATURAL |
| SPRING | 302 STAINLESS STEEL | NATURAL |
| O-RING | BUNA-N | NATURAL |
| SLEEVE | 1075 STEEL | ZINC IMMERSION COATING |
| CAM | 1075 STEEL | ZINC IMMERSION COATING |
| SHAFT | LOW CARBON STEEL | ZINC PLATE CHROMATE, PLUS SEALER |
| PIN | 1008 STEEL | ZINC PLATE PLUS CHROMATE DIP, YELLOW |
| PAWL | 1010 STEEL | ZINC PLATE CHROMATE, PLUS SEALER |
| JAM NUTS (2) | LOW CARBON STEEL | ZINC PLATE CHROMATE, PLUS SEALER |
| LOCKWASHERS (2) | SPRING STEEL | ZINC PLATE CHROMATE, PLUS SEALER |
| MOUNTING NUT | DIE CAST ZINC | ZINC PLATE PLUS CHROMATE DIP, BRIGHT |
| MOUNTING LOCKWASHER | SPRING STEEL | ZINC PLATE CHROMATE, PLUS SEALER |

THE ABOVE PART NUMBERS ARE TYPE "A" (TURN CLOCKWISE TO LATCH). FOR TYPE "B" ASSEMBLIES (TURN COUNTERCLOCKWISE TO LATCH), CHANGE THE THIRD DIGIT OF THE PART NUMBER FROM 1 TO 22. EXAMPLE: E3-2220-15

DOOR PREPARATION

METHOD A

METHOD B

(NOT RECOMMENDED FOR GASKETED APPLICATIONS)

