



SOUTHCO No. 27 ADJUSTABLE PAWL FASTENER - ASSEMBLY
 LOW PROFILE SLOTTED HEAD - TYPE A

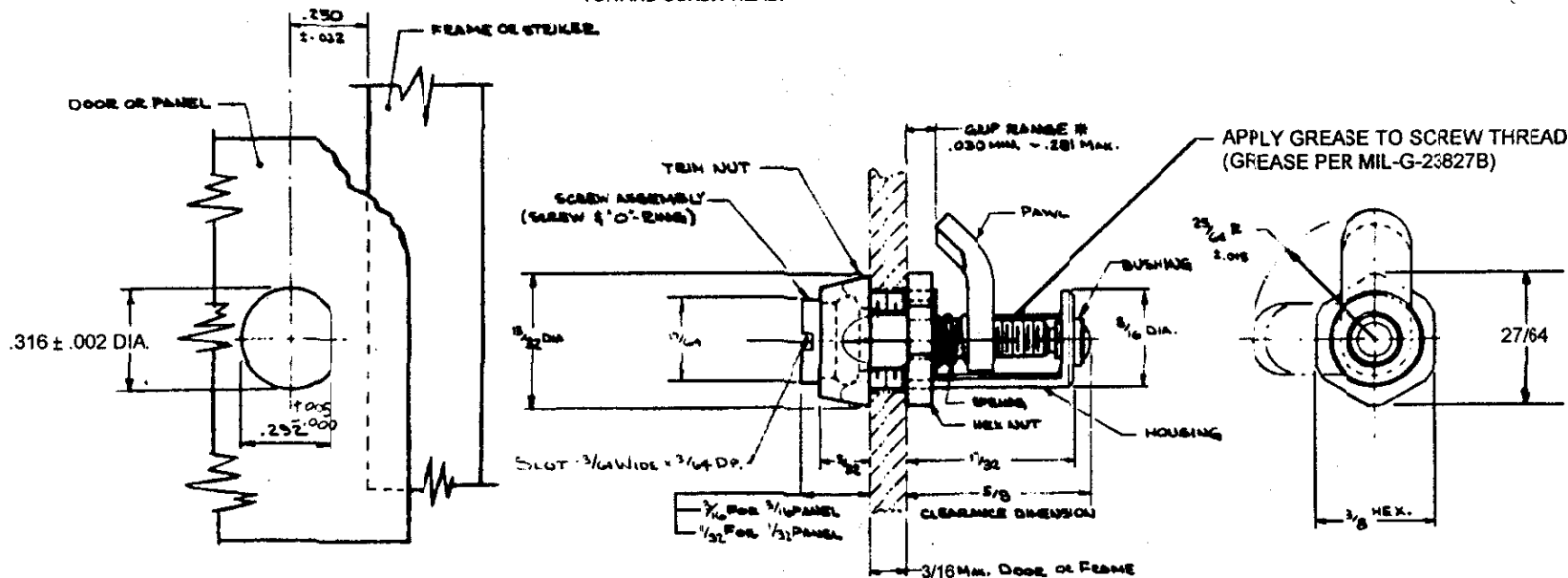
DATE	DRAWN	CHKD	SCALE	DRAWING NUMBER
7-9-71	TEK	WBR	N.T.S.	J-27-10-501-20

REV. LET.	DATE	BY-CHKD	REVISIONS	ITEM	PART No.	MATERIAL	FINISH	R.S.	DATE	APP.
F	4-11-89	DWF	PRN: 27-64	ASSEMBLY	27-10-501-20			A	7-12-71	pt
H	8-15-89	ESK	PRN-27-48	SCREW ASSY	27-16-501-20	SEE NOTE 'A'	SEE NOTE 'A'	B	8-4-71	JFK
I	11-13-89	PRE	PRN: 27-48B	HOUSING	27-0-795-24	STAINLESS STL	PASSIVATE	C	10-29-71	JFK
J	18 JAN 93	JSK	PRN: 14-75	PAWL	27-13-101-24			D	10-23-71	JFK
K	20 JAN 93	JA	PRN: 51-03	SPRING	27-14-102-24					
				TRIM NUT	27-82-403-24					
				HEX NUT	27-83-301-24	STAINLESS STL	PASSIVATE			
				BUSHING	27-81-301-15	BRASS	NATURAL			

THESE ASSEMBLIES ARE NON-REPAIRABLE ITEMS AND COMPONENTS ARE NOT AVAILABLE AS REPLACEMENT OR REPAIR PARTS.

* OUTER PANEL THICKNESS PERMITTING, MAX. GRIP MAY BE EXTENDED WHERE NECESSARY BY ADJUSTING HEX NUT TOWARD SCREW HEAD.

NOTE 'A' - SCREW - STAINLESS STL - PASSIVATE
 'O' RING - SYNTHETIC RUBBER - NATURAL



Mounting Instructions

PUNCH SHAPED HOLE IN PANEL, LOCATED AS SHOWN: INSERT FASTENER FROM BACK SIDE OF PANEL, MAKING SURE HEX NUT IS AT BACK EDGE OF HOUSING CUTOUT. SLIP TRIM NUT OVER SCREW AND RUN DOWN FINGER TIGHT AGAINST PANEL. WITH PAWL IN LOCKED POSITION AND HOUSING PROPERLY ORIENTED, HOLD HOUSING IN POSITION AND TIGHTEN HEX NUT HARD AGAINST PANEL WITH 3/8 OPEN-END WRENCH THEN PUSH KNOB ONTO KNURLED HEAD OF SCREW.