

REVISION HISTORY			
REV	DATE	BY	DESCRIPTION
D	31MAR2021	ABK/VK	PRN: P2021-0645

R4-30-3 I -30 B-M

I MOUNTING OPTION

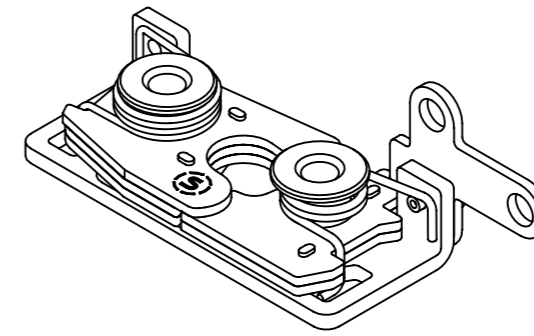
- 0 6.7 mm THRU HOLE
- 1 1/4-20 THREAD
- 2 M6 THREAD

B LATCHING

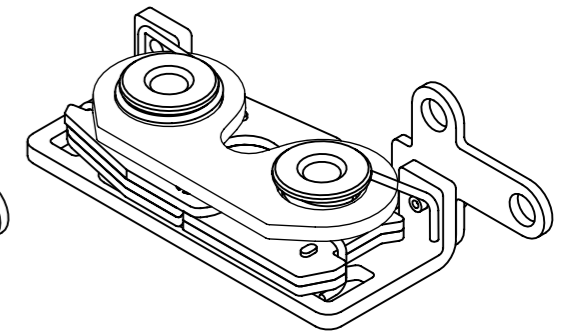
- 1 STANDARD
- 5 INTEGRATED BUMPER

M MATERIAL

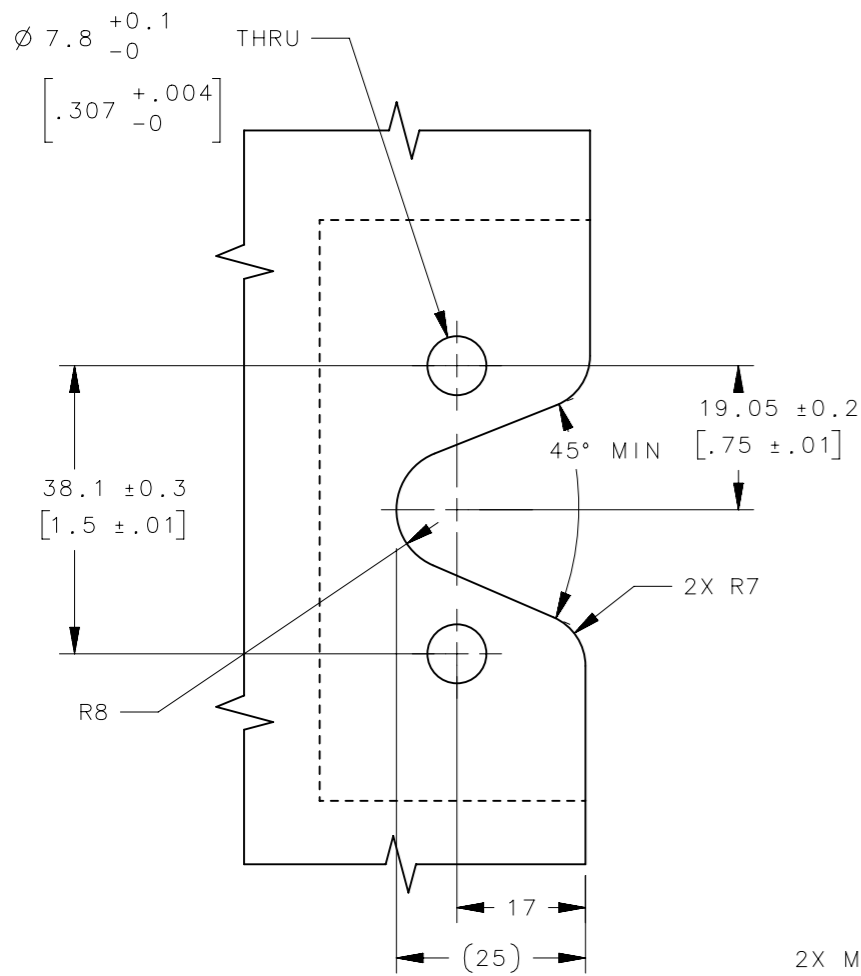
- 10 STEEL, ZINC PLATED
- 15 STEEL, BLACK ZINC NICKEL PLATED
- 77 STEEL, ZINC NICKEL PLATED



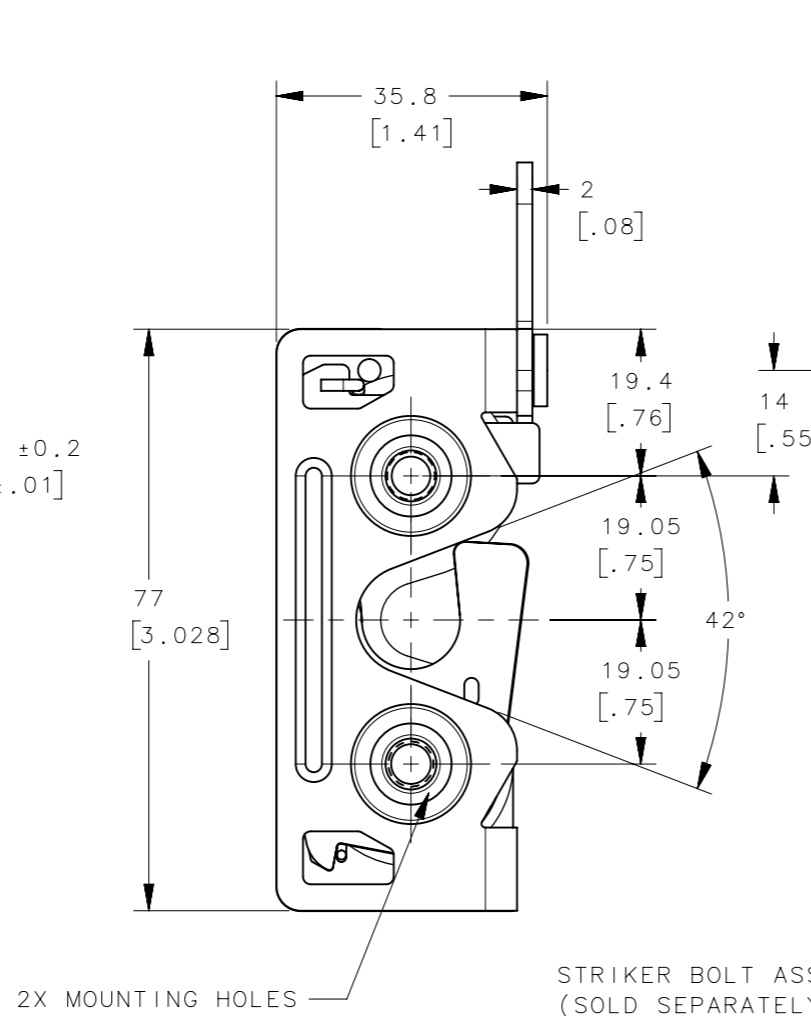
R4-30-3 I -301-M
(STANDARD)
SCALE 3:4



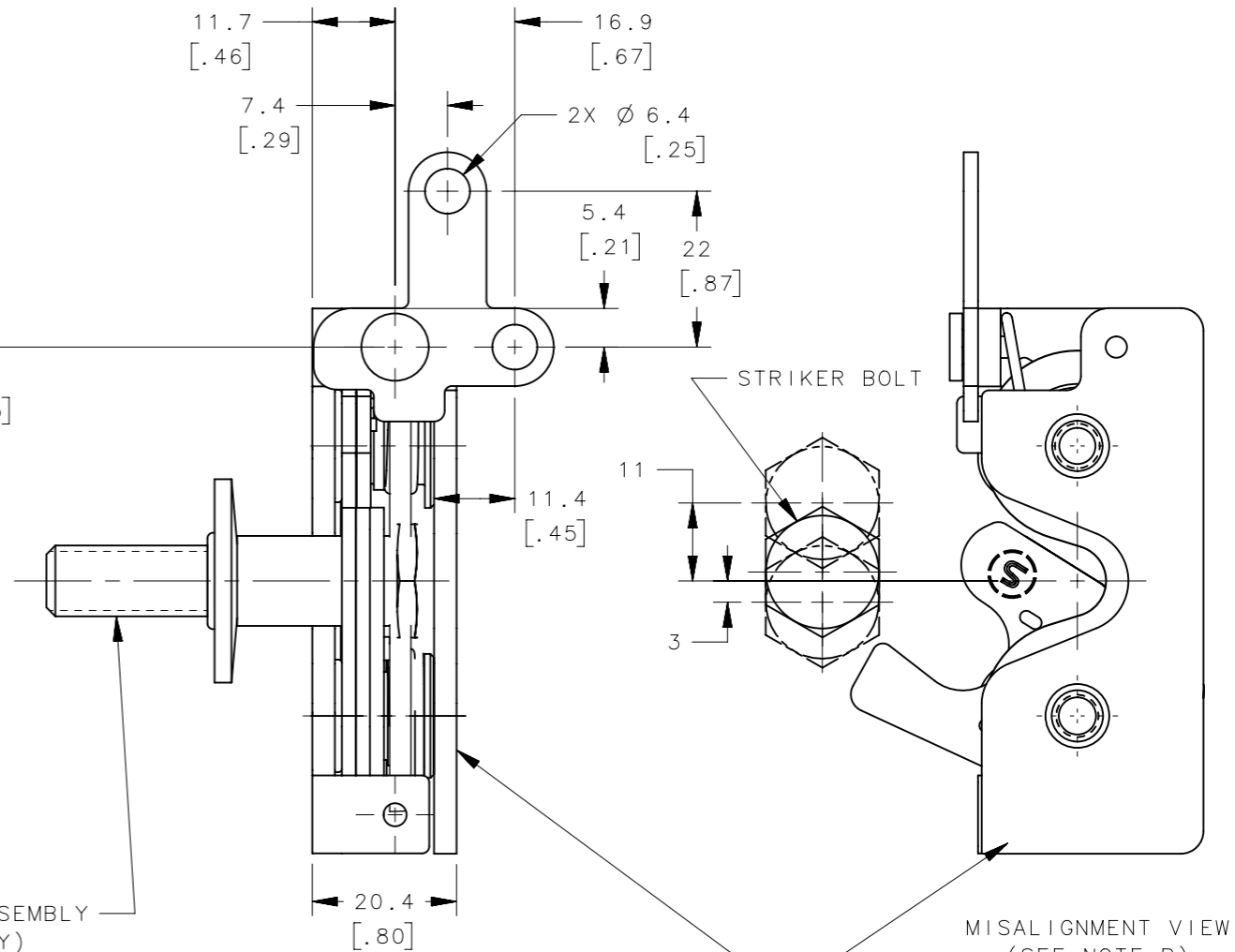
R4-30-3 I -305-M
(INTEGRATED BUMPER)
SCALE 3:4



PANEL PREPARATION



2X MOUNTING HOLES
STRIKER BOLT ASSEMBLY (SOLD SEPARATELY)
SEE J-R4-90-321 FOR DETAILS



OPTIONAL: (SOLD SEPARATELY)
SUPPORT PLATE (R4-38-101-10)
SEE J-R4-38-101 FOR DETAILS

MISALIGNMENT VIEW
(SEE NOTE B)

NOTES:
A. MATERIAL AND FINISH:

- HOUSING, LEVER AND INTERNAL COMPONENTS: STEEL
- PAWL AND TRIGGER: HARDENED STEEL,
- SPRING: STAINLESS STEEL, PASSIVATED

B. THE MISALIGNMENT VIEW ASSUMES THE LATCH IS CONNECTED TO A PERFECTLY RIGID DOOR AND HINGE; THEREFORE, THERE IS NO DOOR AND/OR HINGE SLACK ASSOCIATED WITH THESE DIMENSIONS, THE MISALIGNMENT VIEW DOES NOT TAKE FLEXING OF THE STRIKER BOLT INTO ACCOUNT.

THIRD ANGLE PROJECTION			
MILLIMETERS [IN]			
TOLERANCES UNLESS OTHERWISE NOTED		DESCRIPTION	
ALL DIMENSIONS WITHOUT TOLERANCES ARE FOR REFERENCE ONLY.		R4 LATCH ASSEMBLY - TWO POINT RIGHT HAND ACTUATION	
PER ASME Y14.5M-1994		SIZE A3	SYSTEM NX
DRAWN BY ACH/RJB		DATE 18JUN2013	DWG NO. J-R4-30-30-301
SCALE 1:1		SHEET 1 OF 1	