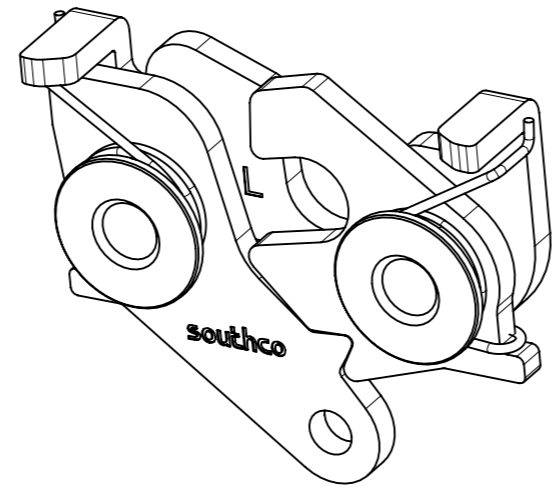
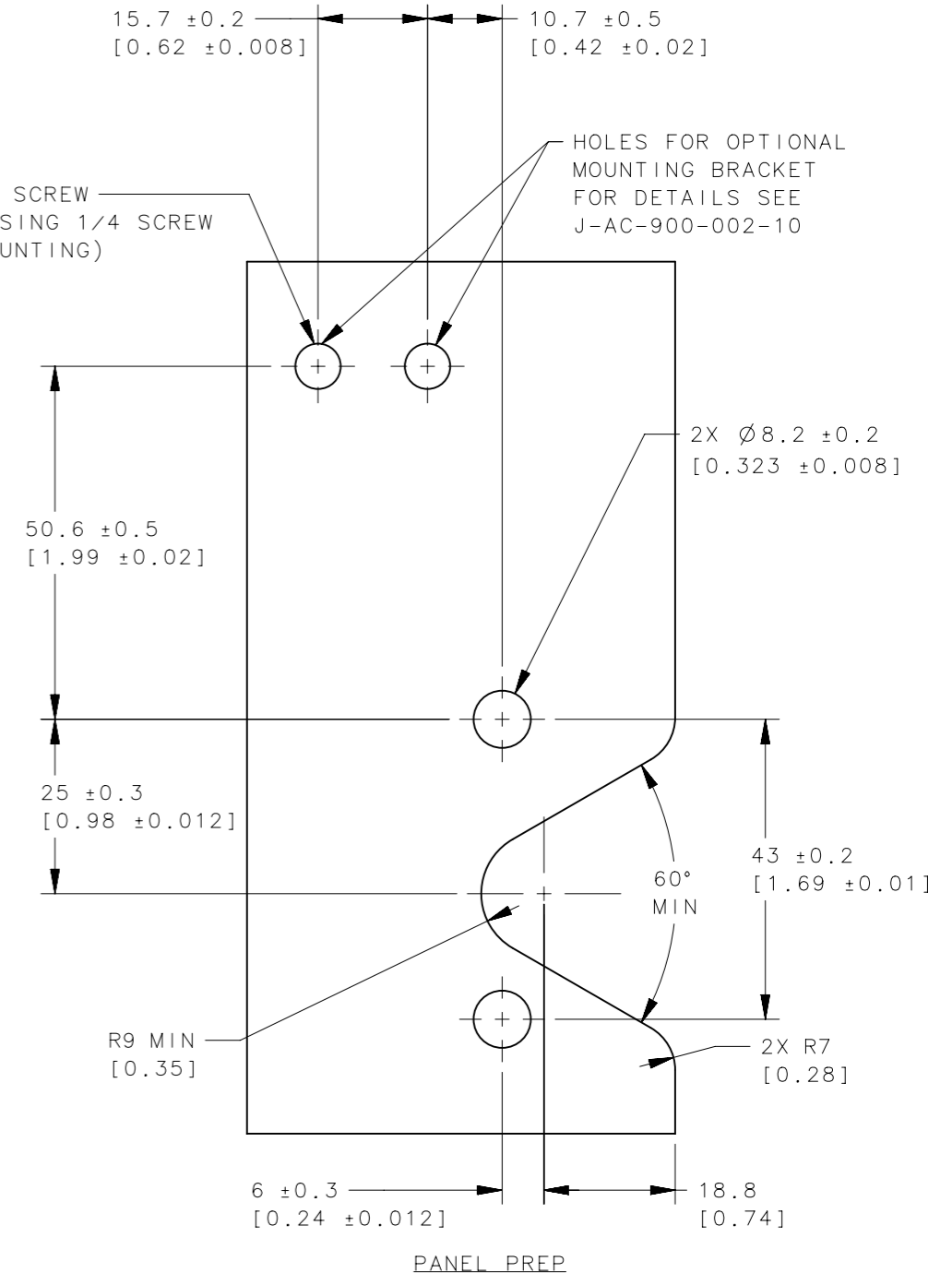
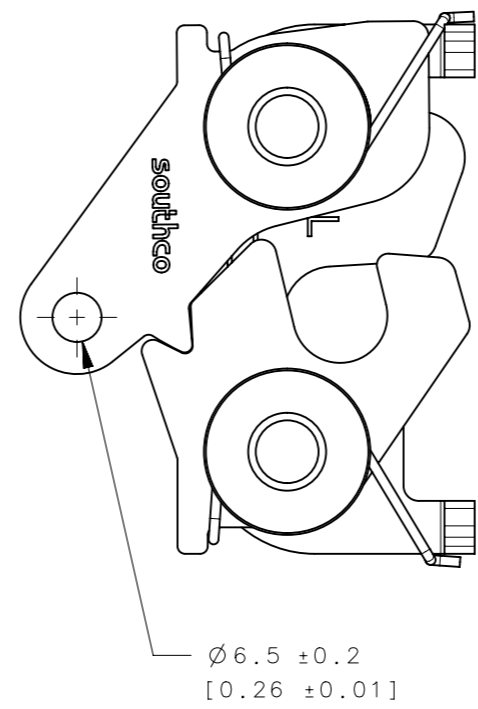
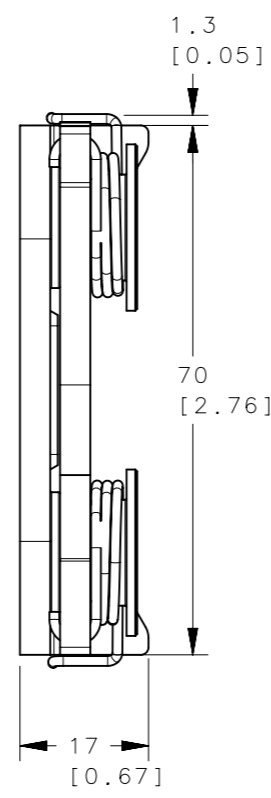
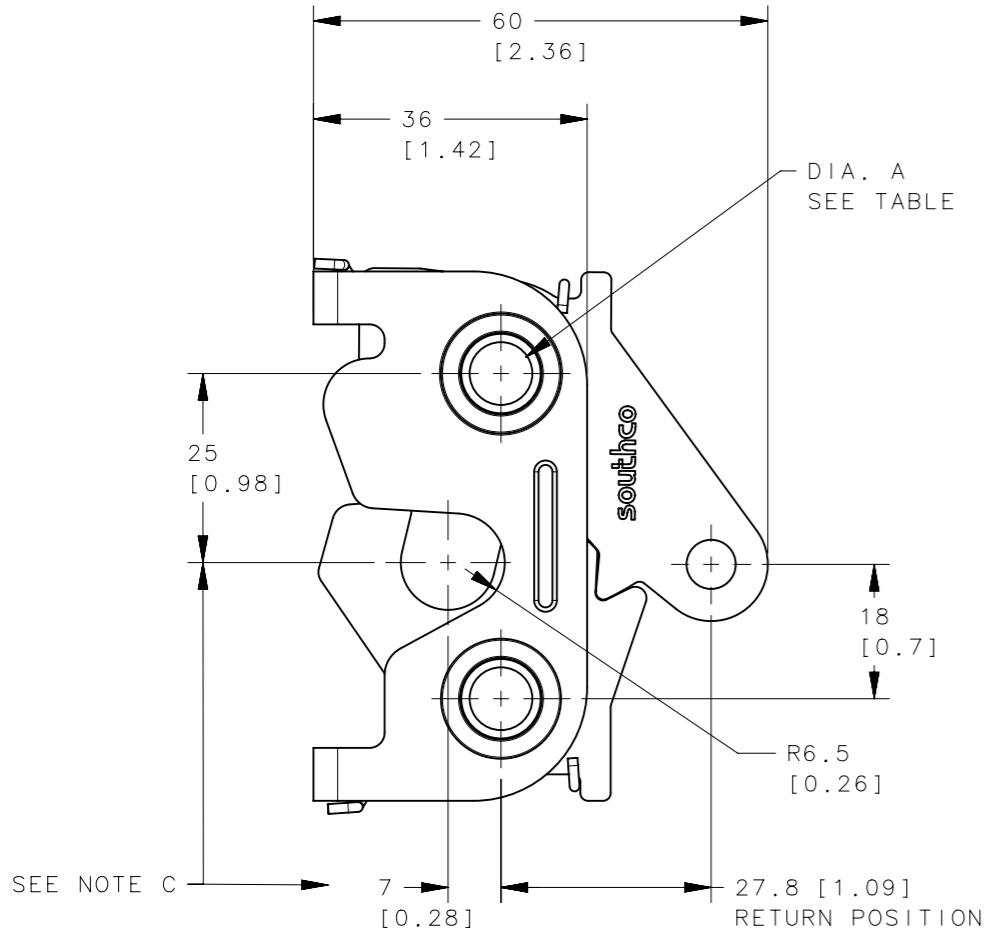


REVISION HISTORY			
REV	DATE	BY	DESCRIPTION
K	29JUN2016	AVC/NJF	PRN: P2016-1614



2X Ø6.5 IF USING M6 SCREW  
 2X H-SIZE DRILL IF USING 1/4 SCREW  
 (FOR THROUGH HOLE MOUNTING)

HOLES FOR OPTIONAL MOUNTING BRACKET FOR DETAILS SEE J-AC-900-002-10



NOTES:

A. MATERIAL AND FINISH:

- HOUSING AND PIN: STEEL, ZINC PLATED, BRIGHT CHROMATE.
- PAWL AND TRIGGER: HARDENED STEEL, ZINC PLATED, BRIGHT CHROMATE.
- SPRING: STAINLESS STEEL, PASSIVATED.

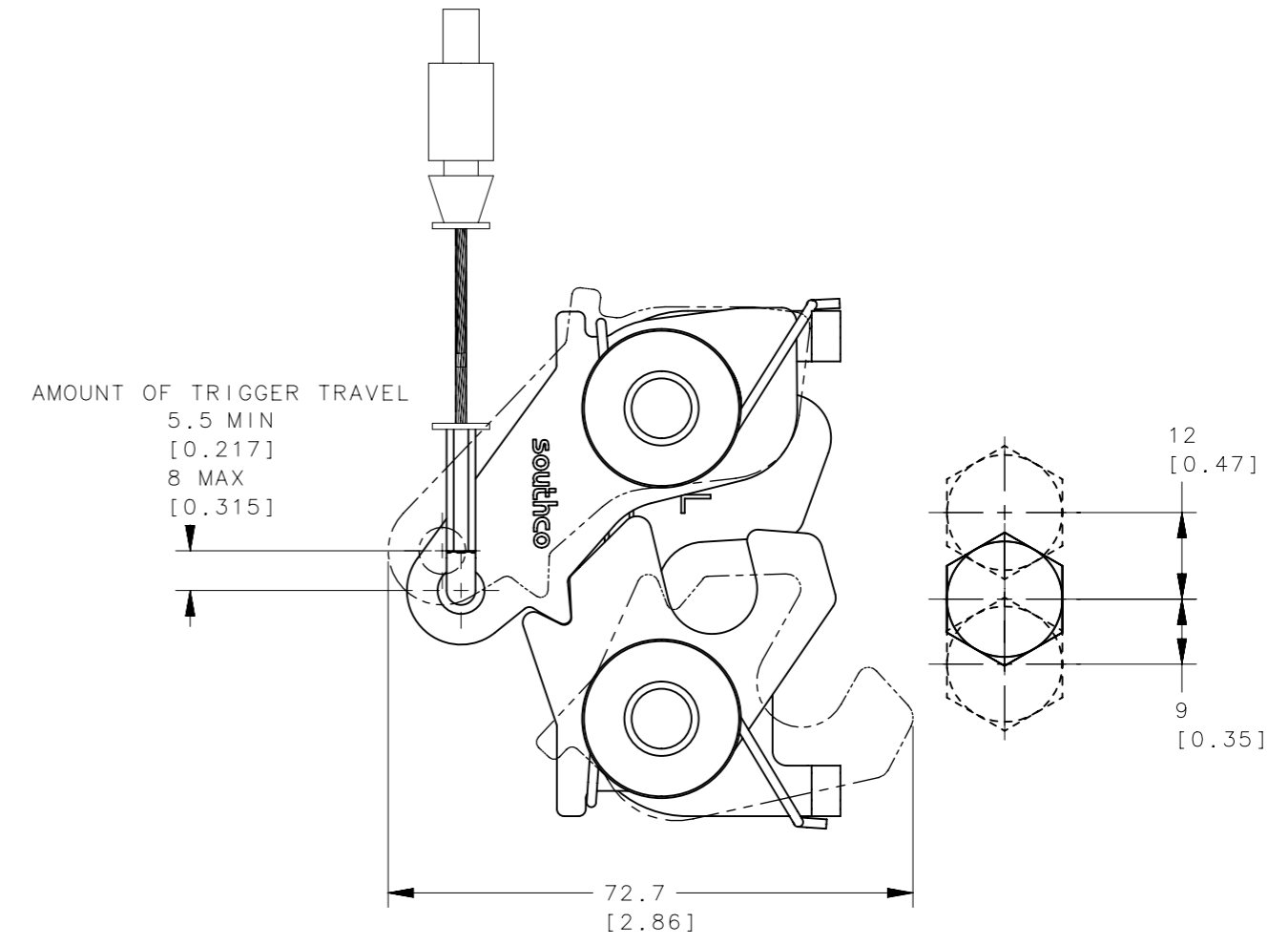
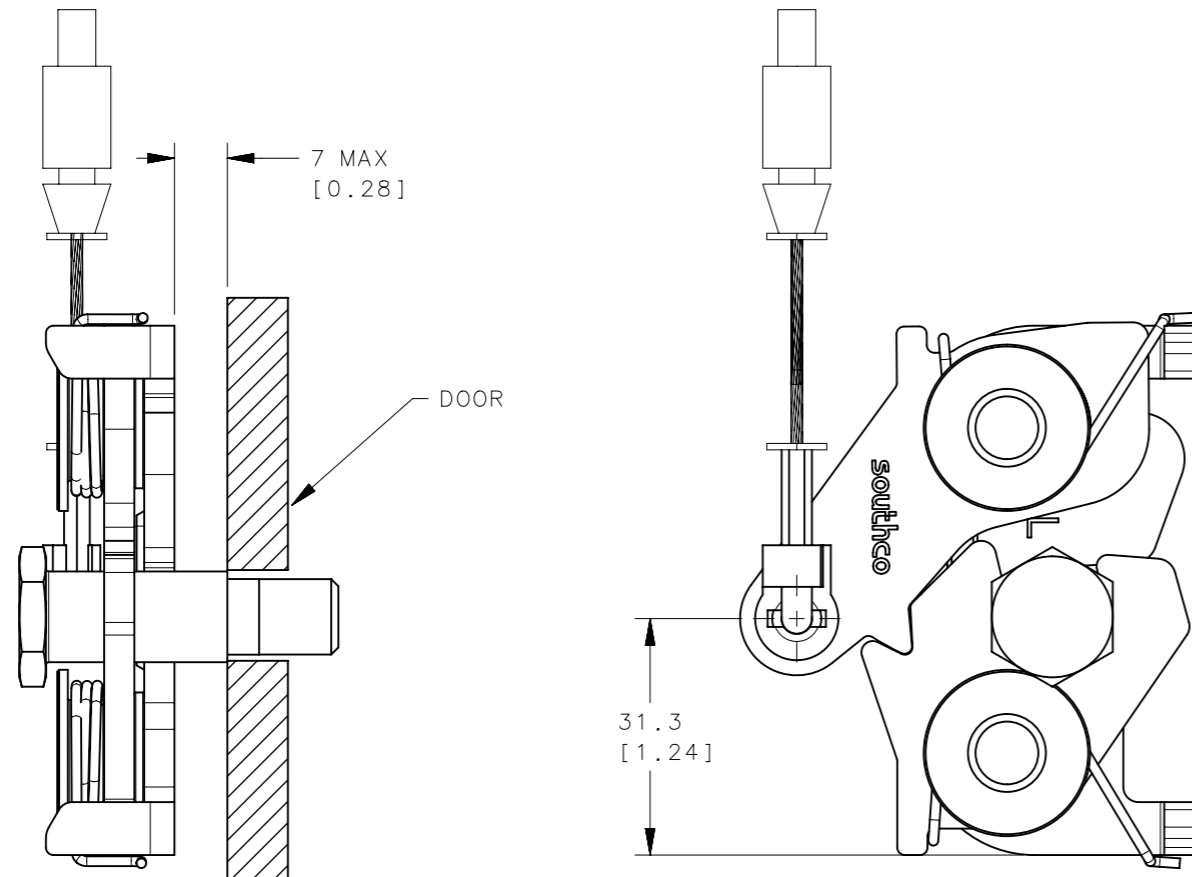
B. REFER TO TRADE DRAWING J-AC-C FOR CABLE SELECTION.

C. THESE DIMENSIONS REQUIRED FOR MOUNTING STRIKER BOLT.

SOUTCHO PART No.	ITEM	DIMENSION A	MATERIAL	FINISH
R4-20-20-501-10	Ø8.3 THRU ASSEMBLY	Ø8.3 ± 0.12	SEE NOTE A	SEE NOTE A
R4-20-21-501-10	5/16-18 THREAD ASSEMBLY	M8 X 1.25	SEE NOTE A	SEE NOTE A
R4-20-22-501-10	M8 THREAD ASSEMBLY	5/16 - 18	SEE NOTE A	SEE NOTE A

THIRD ANGLE PROJECTION			
MILLIMETERS [IN]			
TOLERANCES UNLESS OTHERWISE NOTED	DESCRIPTION PUSH TO CLOSE LATCH		
ALL DIMENSIONS WITHOUT TOLERANCES ARE FOR REFERENCE ONLY.	SIZE A3	SYSTEM NX	DWG NO. J-R4-20-20-501
PER ASME Y14.5M-1994	DRAWN BY ACH/DS	DATE 21NOV2008	SCALE 1:1 SHEET 1 OF 3

REVISION HISTORY			
REV	DATE	BY	DESCRIPTION
K	29JUN2016	AVC/NJF	PRN: P2016-1614



MISALIGNMENT VIEW  
(SEE NOTE D)

NOTES:

D. THE TOLERANCE BETWEEN THE LATCH AND STRIKER BOLT ASSUMES A NON-RIGID DOOR INSTALLATION THAT WILL ALLOW THE DOOR TO MOVE INTO THE NOMINAL POSITION DURING LATCHING. RIGID DOORS MUST HAVE THE STRIKER INSTALLED PER THE PANEL PREPARATION RECOMMENDATION.

R4-20-20-501-10	∅ 8.3 THRU ASSEMBLY	∅ 8.3 ±0.12	SEE NOTE A	SEE NOTE A
R4-20-21-501-10	5/16-18 THREAD ASSEMBLY	5/16 - 18	SEE NOTE A	SEE NOTE A
R4-20-22-501-10	M8 THREAD ASSEMBLY	M8 x 1.25	SEE NOTE A	SEE NOTE A
SOUTHCO PART No.	ITEM	DIMENSION A	MATERIAL	FINISH

THIRD ANGLE PROJECTION		 CONNECT • CREATE • INNOVATE		
MILLIMETERS [IN]				
TOLERANCES UNLESS OTHERWISE NOTED		DESCRIPTION PUSH TO CLOSE LATCH		
ALL DIMENSIONS WITHOUT TOLERANCES ARE FOR REFERENCE ONLY.		SIZE A3	SYSTEM NX	DWG NO. J-R4-20-20-501
PER ASME Y14.5M-1994		DRAWN BY ACH/DS	DATE 21NOV2008	SCALE 1:1
<small>PROPRIETARY ITEM EXCEPT FOR USES EXPRESSLY GRANTED IN WRITING, INFORMATION DISCLOSED HEREON IS CONFIDENTIAL AND ALL RIGHTS, PATENT AND OTHERWISE, ARE RESERVED BY SOUTHCO, INC.</small>		SHEET 2 OF 3		

6

5

4

3

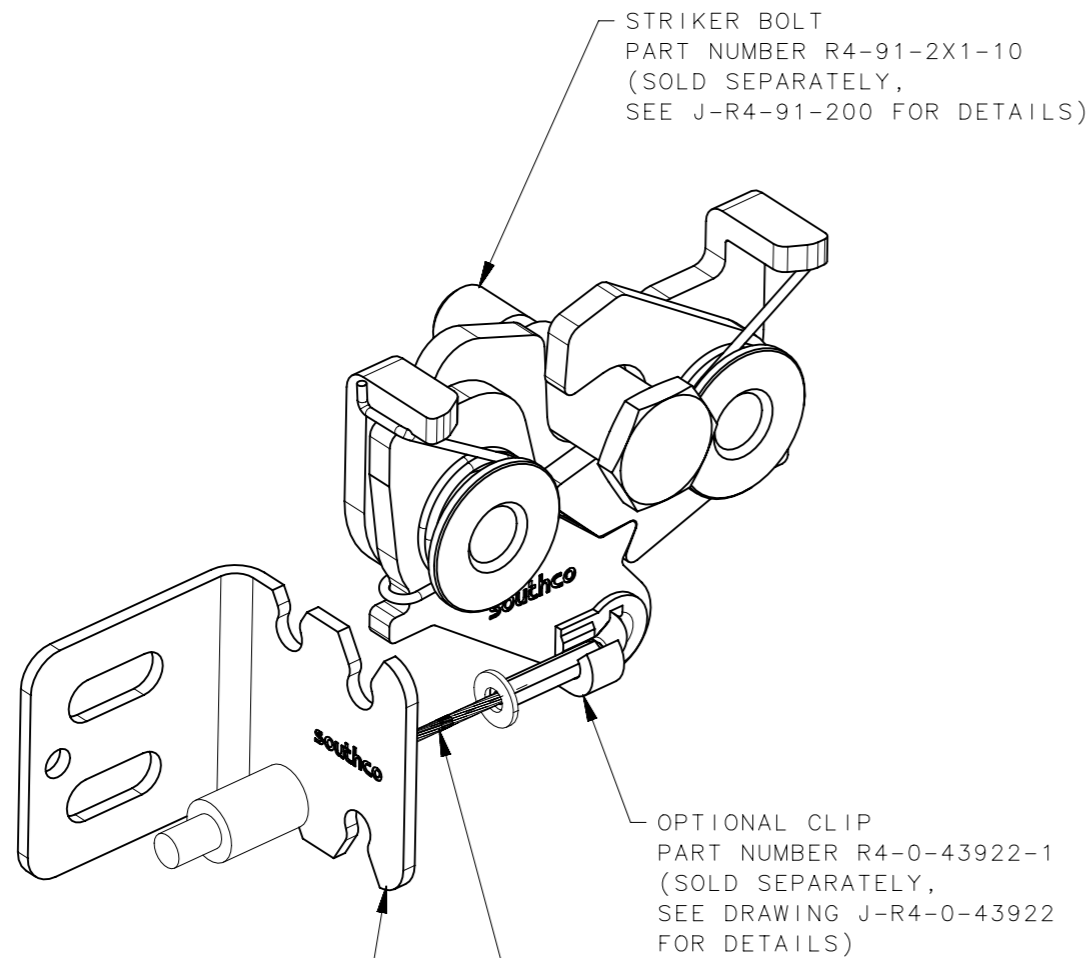
2

1

REVISION HISTORY			
REV	DATE	BY	DESCRIPTION
K	30JUN2016	AVC/NJF	PRN: P2016-1614

NOTE:

ASSEMBLY SHOWN WITH SOUTHCO CABLE FITTING "B" AND CABLE "13". SEE J-AC-C FOR DETAILS

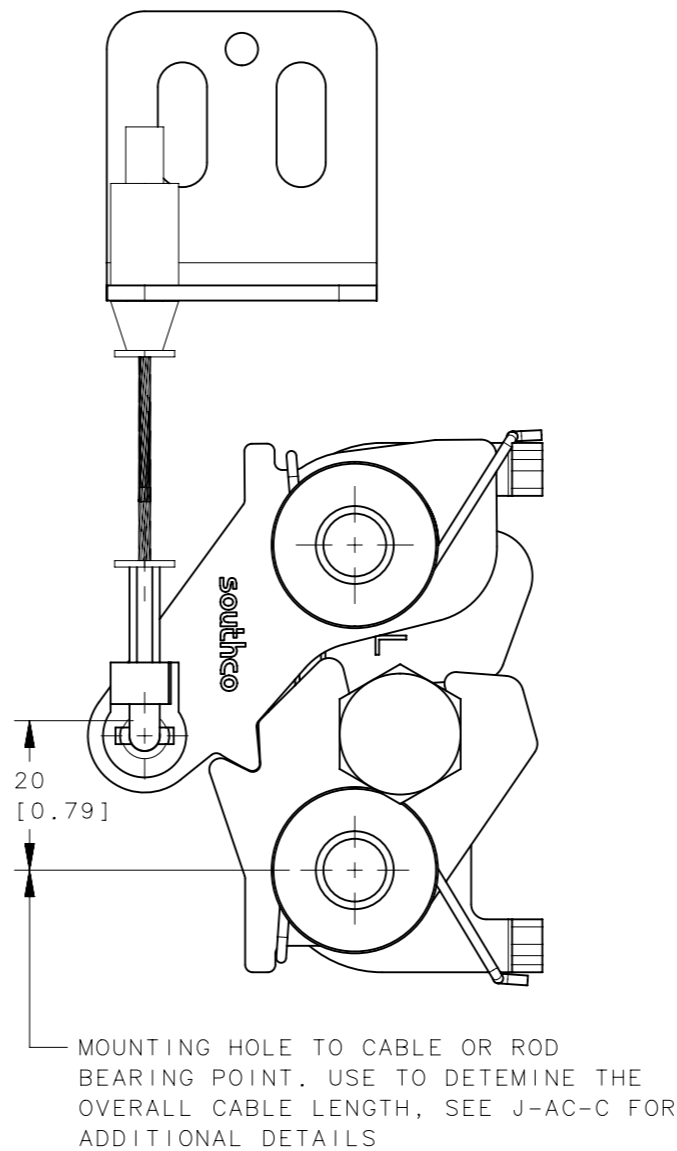


OPTIONAL CABLE ASSEMBLY  
SEE DRAWING J-AC-C FOR DETAILS  
(SOLD SEPARATELY)

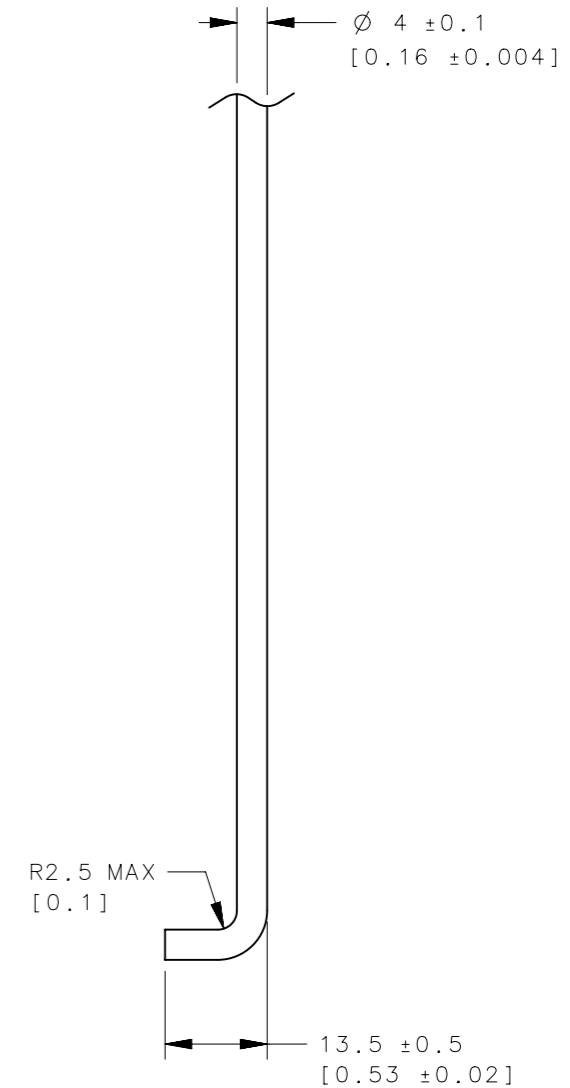
(CABLE SHOWN WITH  
CABLE FITTING "B" IN  
A CABLE ASSEMBLY "13")

OPTIONAL CABLE ASSEMBLY  
MOUNTING BRACKET  
PART NUMBER AC-900-02-10  
(SOLD SEPARATELY)

INSTALL USING 3 SCREWS  
(2 MOUNTING, 1 SET)  
(SCREWS NOT SUPPLIED)  
SEE J-AC-900-02-10 FOR  
DETAILS



ROD OPTION



R4-20-20-501-10	∅ 8.3 THRU ASSEMBLY	∅ 8.3 ± 0.12	SEE NOTE A	SEE NOTE A
R4-20-21-501-10	5/16-18 THREAD ASSEMBLY	5/16 - 18	SEE NOTE A	SEE NOTE A
R4-20-22-501-10	M8 THREAD ASSEMBLY	M8 x 1.25	SEE NOTE A	SEE NOTE A
SOUTHCO PART No.	ITEM	DIMENSION A	MATERIAL	FINISH

THIRD ANGLE  
PROJECTION

MILLIMETERS [IN]

TOLERANCES UNLESS OTHERWISE NOTED

ALL DIMENSIONS WITHOUT  
TOLERANCES ARE FOR  
REFERENCE ONLY.

PER ASME Y14.5M-1994

**southco**<sup>®</sup>  
CONNECT • CREATE • INNOVATE

PUSH TO CLOSE LATCH

SIZE A3 SYSTEM NX DWG NO. J-R4-20-20-501

DRAWN BY ACH/DS DATE 21NOV2008 SCALE 1:1 SHEET 3 OF 3

6

5

4

3

2

1