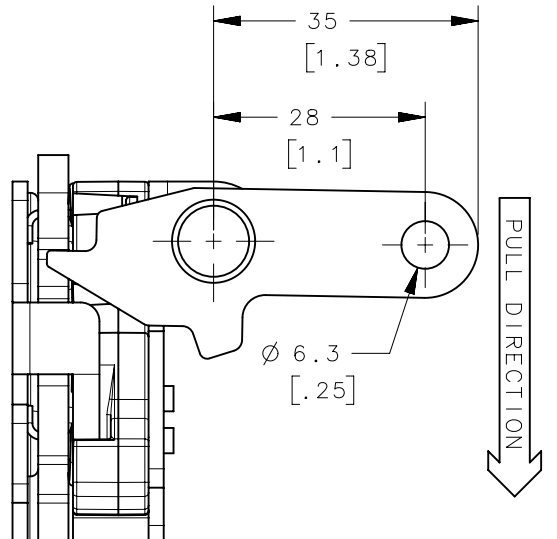
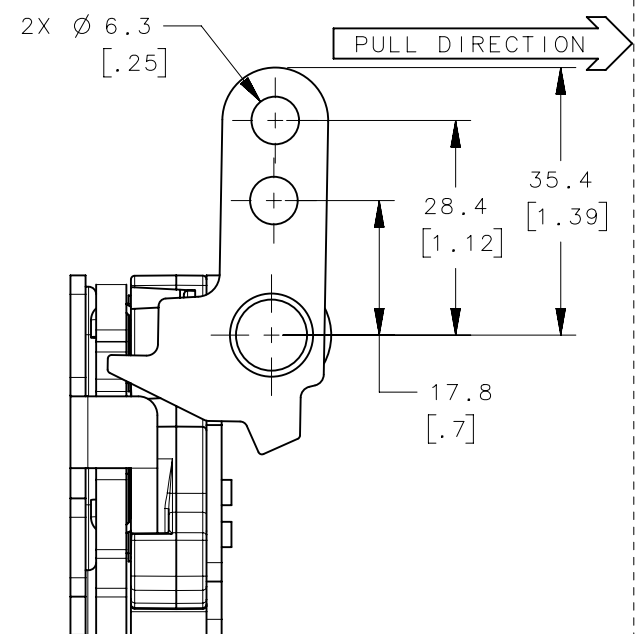


REVISION HISTORY			
REV	DATE	BY	DESCRIPTION
C	29JUL2021	KSH/HPD	PRN: P2021-1527

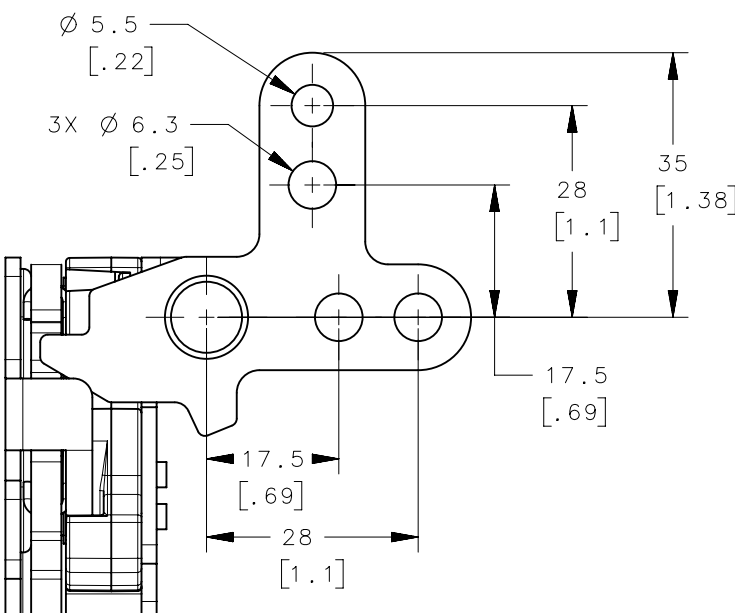
PERPENDICULAR



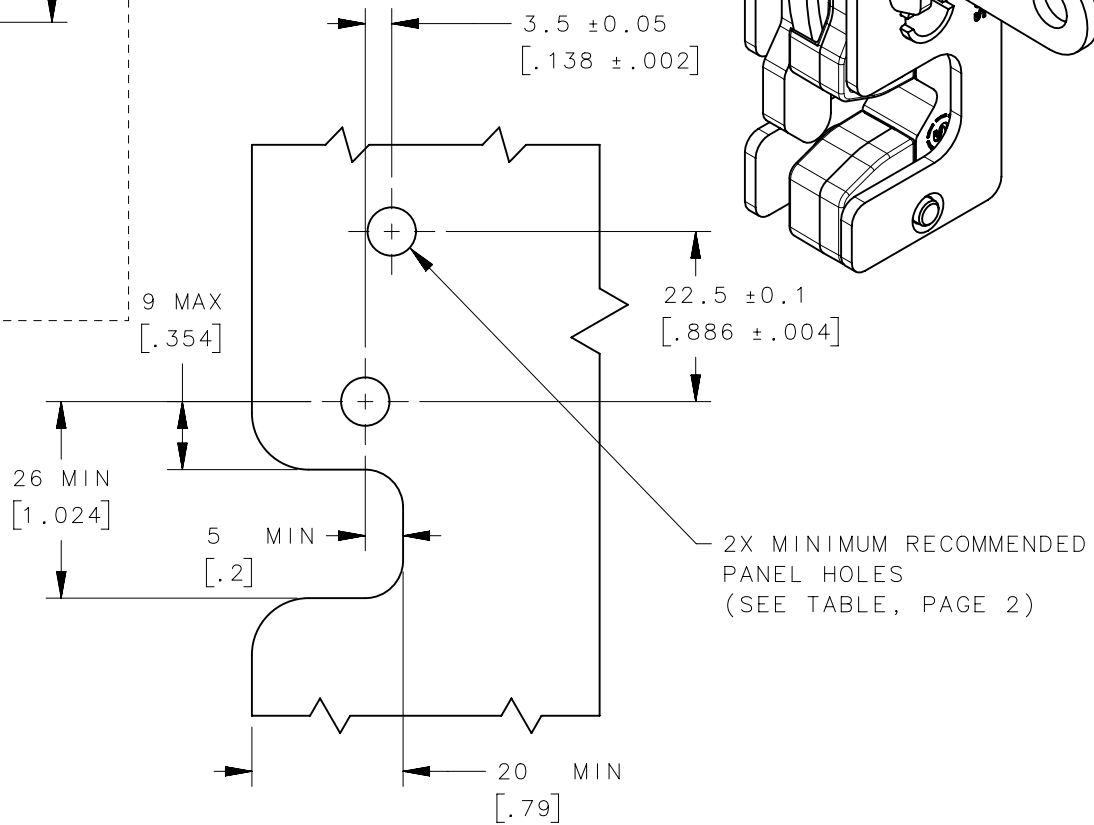
IN-LINE



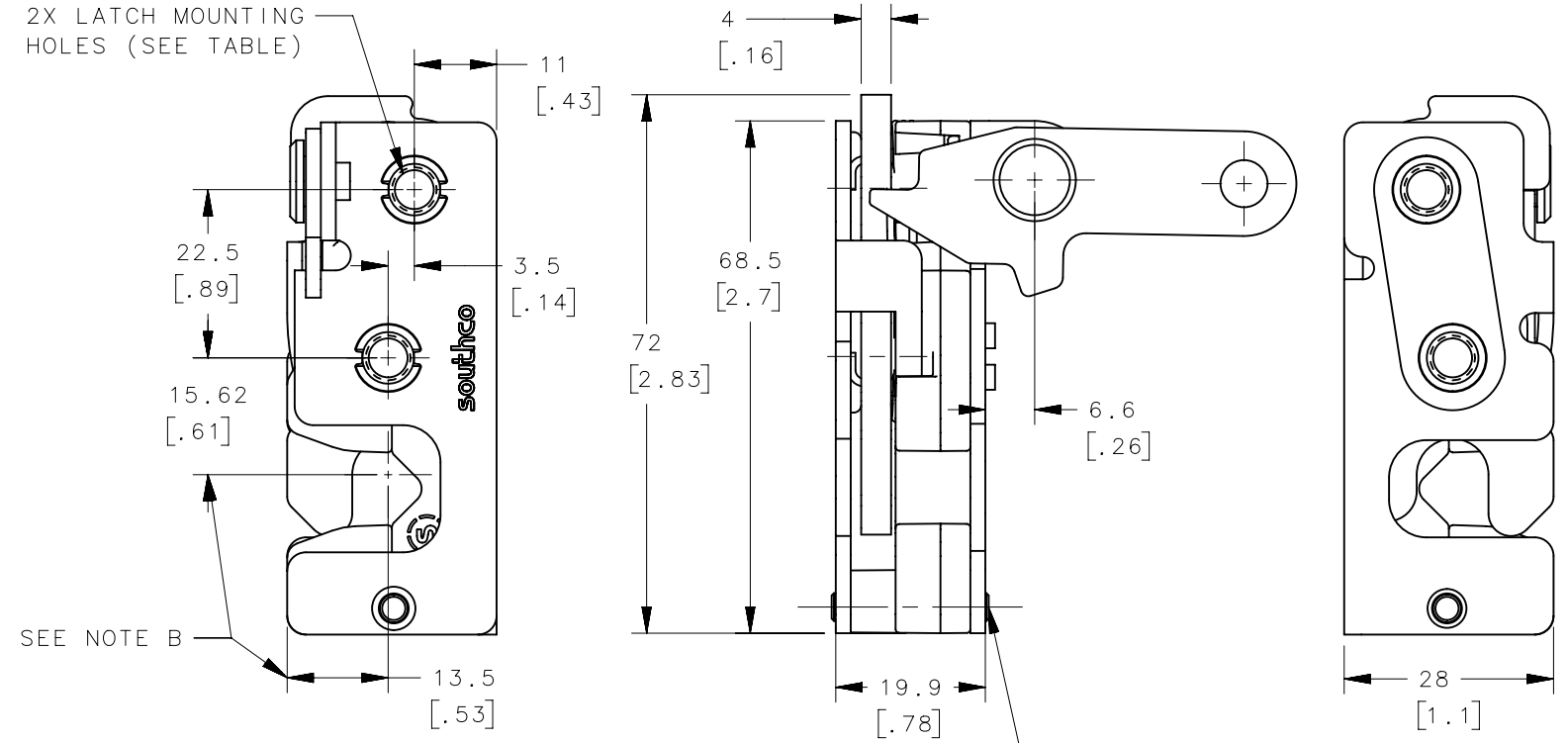
TWO POINT



PANEL PREPARATION



2X LATCH MOUNTING HOLES (SEE TABLE)



ASSEMBLY PART No.
R4-10-□□-□□05-10

STAGE & ACTUATION

- 1 - SINGLE STAGE, RIGHT HAND
- 3 - TWO-STAGE, RIGHT HAND

MOUNTING STYLE

- 0 - Ø 7.2 [0.283] THRU
- 1 - 1/4-20 THREAD
- 2 - M6x1 THREAD

LEVER TYPE

- 1 - PERPENDICULAR
- 2 - IN-LINE
- 3 - TWO POINT

NOTES:

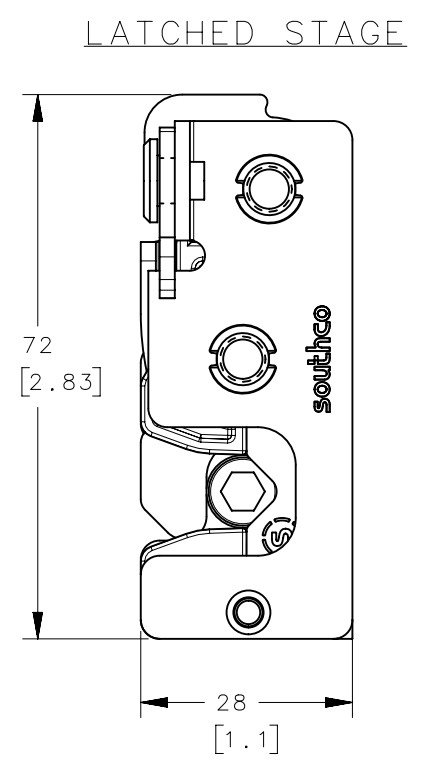
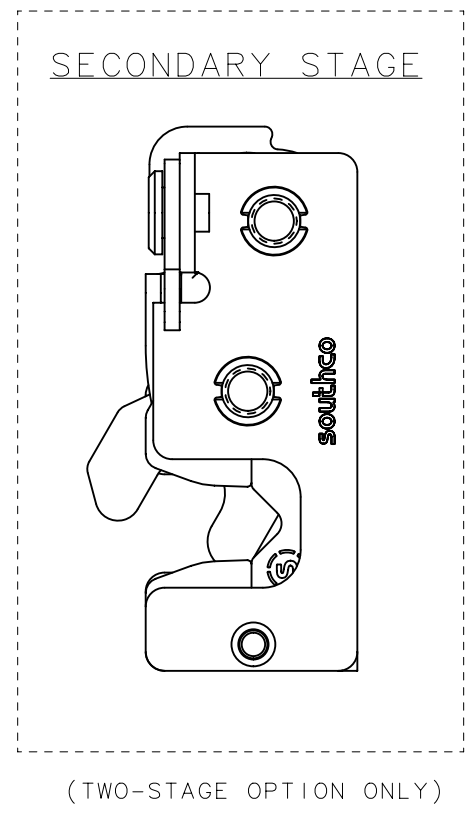
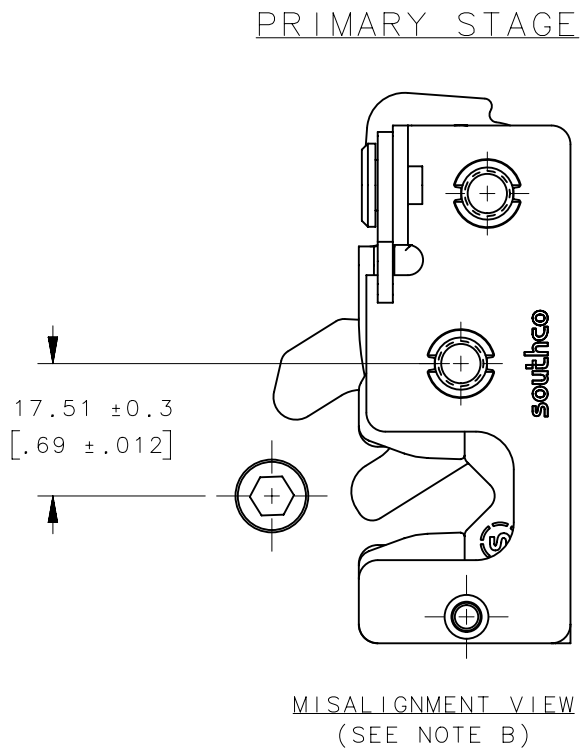
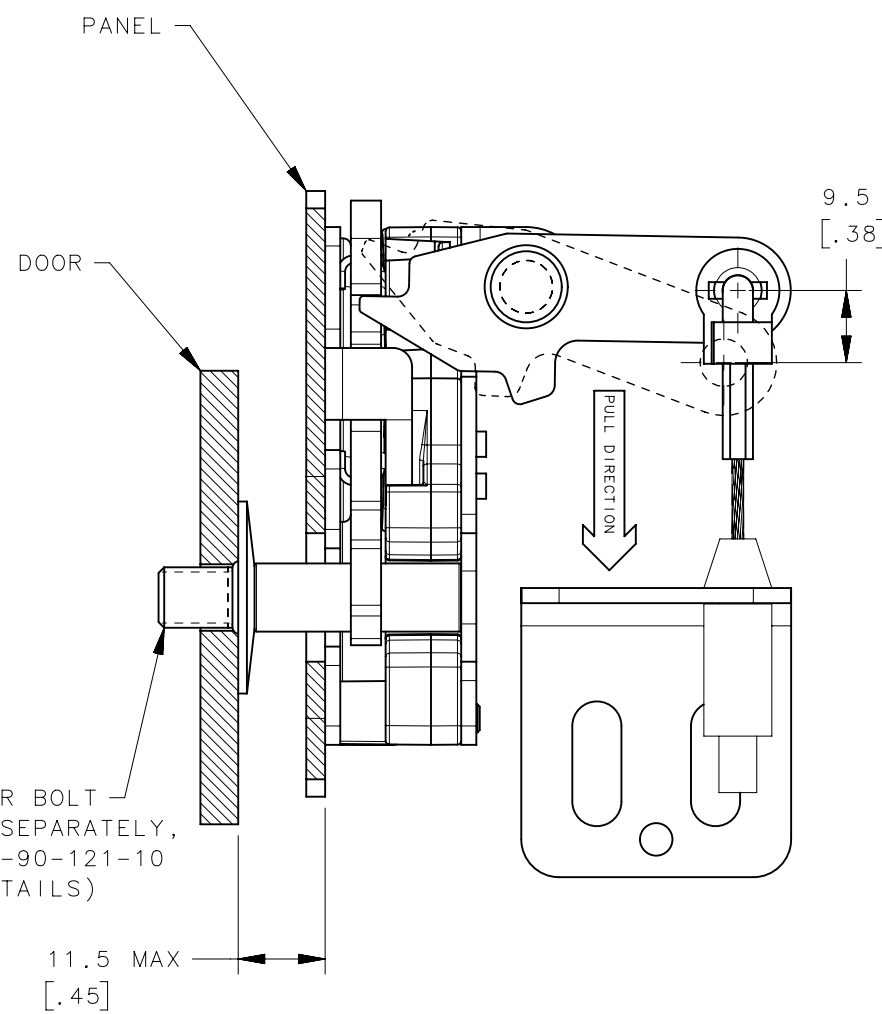
- A. MATERIAL AND FINISH:
 - HOUSING, LEVER, RIVET AND INTERNAL COMPONENTS: STEEL, ZINC PLATED, BRIGHT CHROMATE
 - PAWL AND TRIGGER: HARDENED STEEL, ZINC PLATED, BRIGHT CHROMATE
 - SPRING: STAINLESS STEEL, PASSIVATED
- B. THESE DIMENSIONS REQUIRED FOR MOUNTING STRIKER BOLT.
- C. Ø 6.3 (.25) LEVER HOLES USE OPTIONAL CABLE RETAINER R4-0-43922 SOLD SEPARATELY.

THIRD ANGLE PROJECTION	
MILLIMETERS [IN]	
TOLERANCES UNLESS OTHERWISE NOTED	
ALL DIMENSIONS WITHOUT TOLERANCES ARE FOR REFERENCE ONLY.	
PER ASME Y14.5M-1994	

southco CONNECT • CREATE • INNOVATE			
DESCRIPTION R4 MINI ROTARY LATCH RIGHT HAND - BSR INSERT			
SIZE B	SYSTEM NX	DWG NO. J-R4-10-5AR	
DRAWN BY CMG/DGJ	DATE 06MAY2014	SCALE 1:1	SHEET 1 OF 2

PROPRIETARY ITEM
EXCEPT FOR USES EXPRESSLY GRANTED
IN WRITING, INFORMATION DISCLOSED
HEREON IS CONFIDENTIAL AND ALL
RIGHTS, PATENT AND OTHERWISE,
ARE RESERVED BY SOUTHCO, INC.

REVISION HISTORY			
REV	DATE	BY	DESCRIPTION
C	29JUL2021	KSH/HPD	PRN: P2021-1527



NOTES:

- A. THE TOLERANCE BETWEEN THE LATCH AND STRIKER BOLT ASSUMES A NON-RIGID DOOR INSTALLATION THAT WILL ALLOW THE DOOR TO MOVE INTO THE NOMINAL POSITION DURING LATCHING. RIGID DOORS MUST HAVE THE STRIKER INSTALLED PER THE PANEL PREPARATION RECOMMENDATION.
- B. THE MISALIGNMENT VIEW ASSUMES THE LATCH IS CONNECTED TO A PERFECTLY RIGID DOOR AND HINGE; THEREFORE, THERE IS NO DOOR AND/OR HINGE SLACK ASSOCIATED WITH THESE DIMENSIONS. THE MISALIGNMENT VIEW DOES NOT TAKE FLEXING OF THE STRIKER BOLT INTO ACCOUNT.

R4-10-X0-X05-10	Ø 7.2mm THRU	Ø 7.2 [.299]
R4-10-X1-X05-10	1/4-20 THREAD	Ø 6.8 [.268]
R4-10-X2-X05-10	M6x1 THREAD	Ø 6.4 [.252]
ASSEMBLY PART NUMBER	MOUNTING STYLE	MINIMUM PANEL HOLE

THIRD ANGLE PROJECTION				
MILLIMETERS [IN]				
TOLERANCES UNLESS OTHERWISE NOTED	DESCRIPTION			
ALL DIMENSIONS WITHOUT TOLERANCES ARE FOR REFERENCE ONLY.	R4 MINI ROTARY LATCH RIGHT HAND - BSR INSERT			
PROPRIETARY ITEM EXCEPT FOR USES EXPRESSLY GRANTED IN WRITING, INFORMATION DISCLOSED HEREON IS CONFIDENTIAL AND ALL RIGHTS, PATENT AND OTHERWISE, ARE RESERVED BY SOUTHCO, INC.	SIZE B	SYSTEM NX	DWG NO. J-R4-10-5AR	
PER ASME Y14.5M-1994	DRAWN BY CMG/DGJ	DATE 06MAY2014	SCALE 1:1	SHEET 2 OF 2