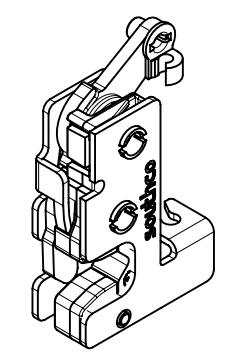
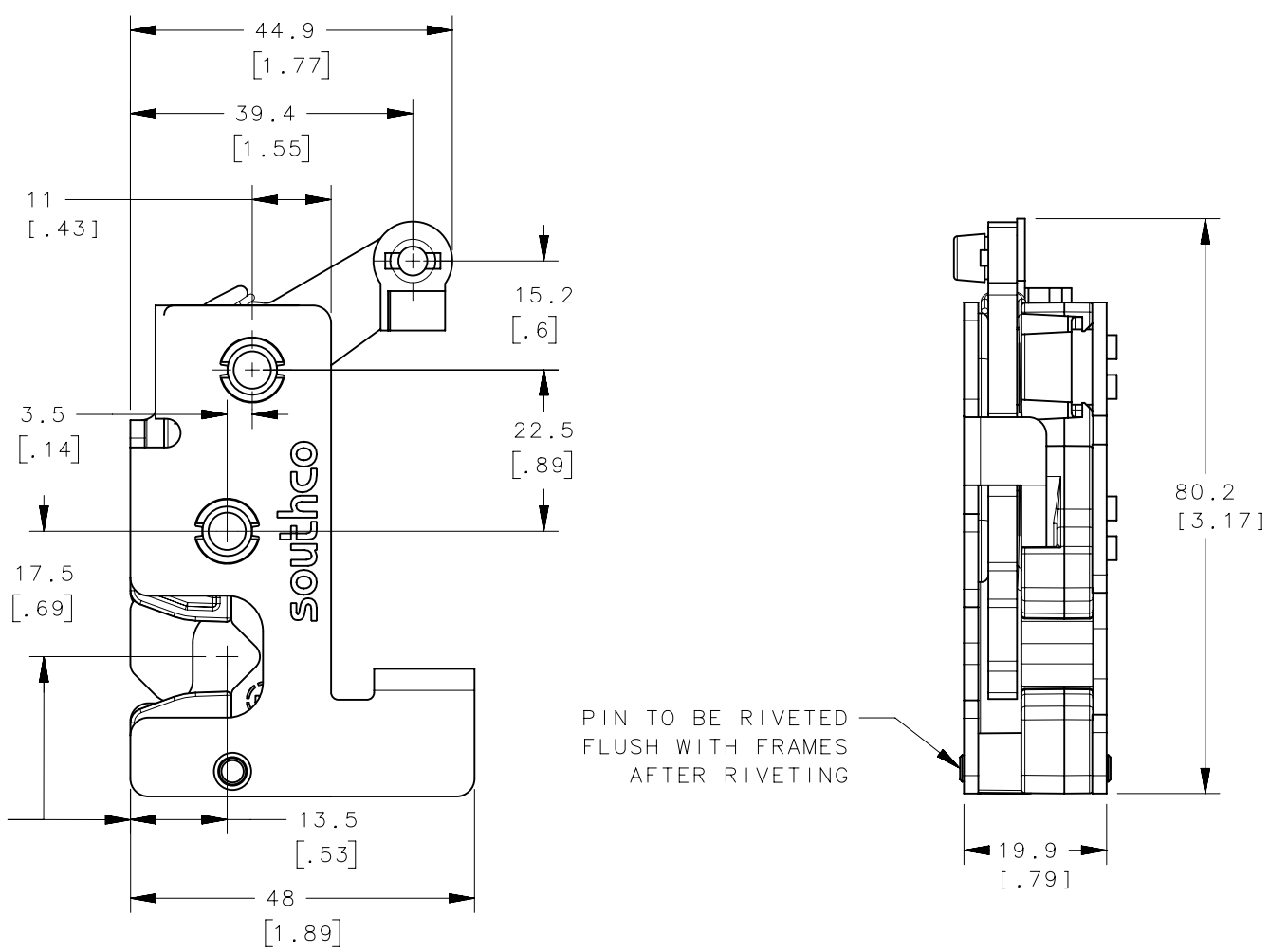
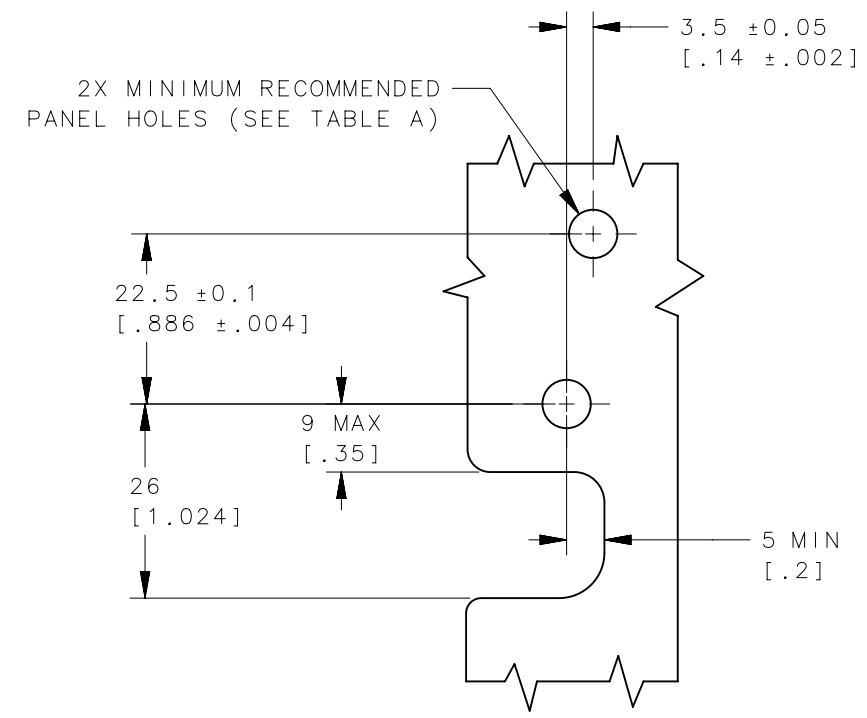


| REVISION HISTORY | | | |
|------------------|-----------|---------|-----------------|
| REV | DATE | BY | DESCRIPTION |
| C | 09AUG2023 | GJL/DMS | PRN: P2023-1477 |



ISOMETRIC VIEW
SCALE 1:2

PANEL PREPARATION



SEE NOTE A

ASSEMBLY PART NUMBER

R4-10-□□-506-□□

- | | | |
|--|---|--|
| <p>STAGE & ACTUATION</p> <p>1- SINGLE STAGE, RIGHT HAND 3- DUAL STAGE, RIGHT HAND</p> | <p>MOUNTING STYLE</p> <p>0- Ø 7.2 THRU 1- 1/4-20 THREAD 2- M6x1 THREAD</p> | <p>MATERIAL</p> <p>1- LOW CARBON STEEL 2- STAINLESS STEEL</p> |
|--|---|--|

NOTES:

- A. THESE DIMENSIONS REQUIRED FOR MOUNTING STRIKER BOLT
B. FINISH:
LOW CARBON STEEL COMPONENTS: ZINC PLATE, BRIGHT CHROMATE.
STAINLESS STEEL COMPONENTS: PASSIVATED

| TABLE A | |
|----------------|--------------------------------|
| MOUNTING STYLE | MINIMUM RECOMMENDED PANEL HOLE |
| Ø 7.2mm THRU | Ø 7.2 [.299] |
| 1/4-20 THREAD | Ø 6.8 [.268] |
| M6x1 THREAD | Ø 6.4 [.252] |

| | | |
|---|--|---------------------|
| THIRD ANGLE PROJECTION | CONNECT • CREATE • INNOVATE | |
| | | |
| SURFACE AREA | TOLERANCES UNLESS OTHERWISE NOTED | |
| VOLUME | ALL DIMENSIONS WITHOUT TOLERANCES ARE FOR REFERENCE ONLY. | |
| PROPRIETARY ITEM <small>EXCEPT FOR USES EXPRESSLY GRANTED IN WRITING, INFORMATION DISCLOSED HEREON IS CONFIDENTIAL AND ALL RIGHTS, PATENT AND OTHERWISE, ARE RESERVED BY SOUTHCO, INC.</small> | DESCRIPTION R4-10 MINI ROTARY LATCH WITH BSR INSERT AND INTEGRATED BRACKET - RIGHT HAND | SIZE SYSTEM B NX |
| PER ASME Y14.5M-1994 | DWG NO. J-R4-10-10-506 | DATE 22JUN2015 |
| | DRAWN BY CMG/DGJ | SCALE 1:1 |
| | | SHEET 1 OF 2 |

6

5

4

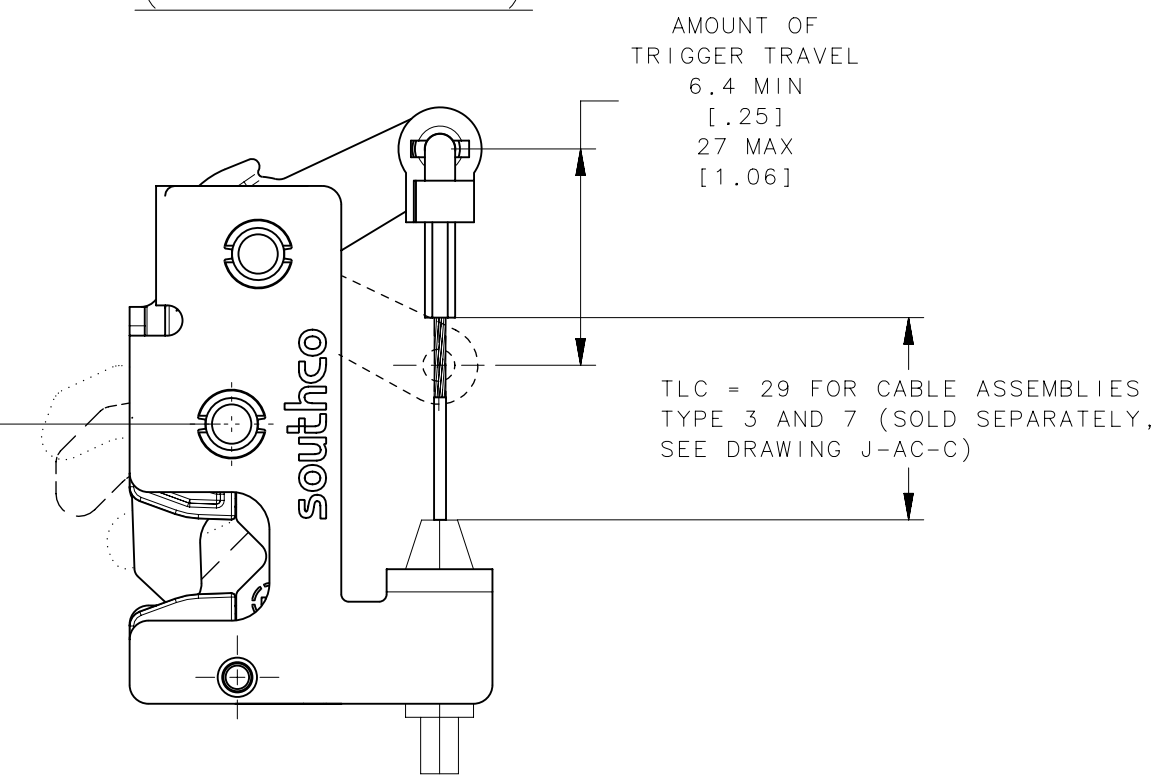
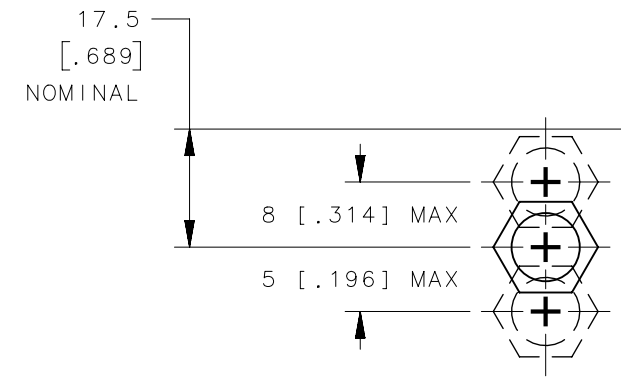
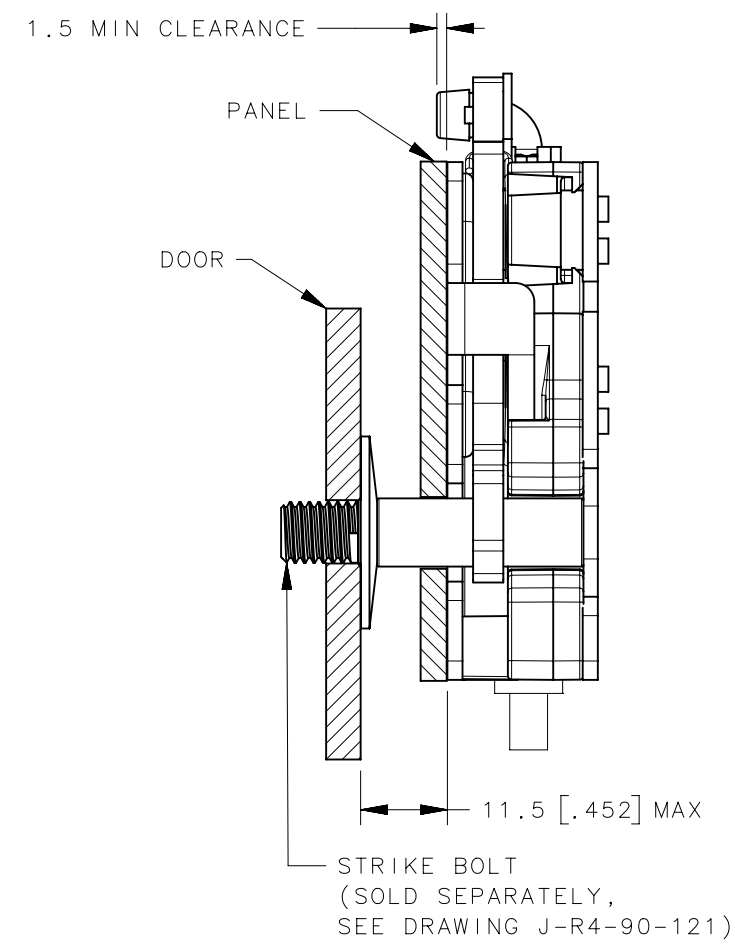
3

2

1

| REVISION HISTORY | | | |
|------------------|-----------|---------|-----------------|
| REV | DATE | BY | DESCRIPTION |
| C | 08AUG2023 | GJL/DMS | PRN: P2023-1477 |

MISALIGNMENT VIEW
(SEE NOTE B)



- FULLY LATCHED POSITION
- - - - - SECONDARY LATCHED POSITION
- UNLATCHED POSITION

- NOTES:
- A. THE TOLERANCE BETWEEN THE LATCH AND STRIKER BOLT ASSUMES A NON-RIGID DOOR INSTALLATION THAT WILL ALLOW THE DOOR TO MOVE INTO THE NOMINAL POSITION DURING LATCHING. RIGID DOORS MUST HAVE THE STRIKER INSTALLED PER THE PANEL PREPARATION RECOMMENDATION.
 - B. THE MISALIGNMENT VIEW ASSUMES THE LATCH IS CONNECTED TO A PERFECTLY RIGID DOOR AND HINGE; THEREFORE, THERE IS NO DOOR AND/OR HINGE SLACK ASSOCIATED WITH THESE DIMENSIONS. THE MISALIGNMENT VIEW DOES NOT TAKE FLEXING OF THE STRIKER BOLT INTO ACCOUNT.

| | | | |
|---|--|---|-------------------|
| THIRD ANGLE PROJECTION | | southco [®] CONNECT • CREATE • INNOVATE | |
| MILLIMETERS [IN] | | | |
| SURFACE AREA | | DESCRIPTION | |
| VOLUME | | R4-10 MINI ROTARY LATCH WITH BSR INSERT AND INTEGRATED BRACKET - RIGHT HAND | |
| PROPRIETARY ITEM <small>EXCEPT FOR USES EXPRESSLY GRANTED IN WRITING, INFORMATION DISCLOSED HEREON IS CONFIDENTIAL AND ALL RIGHTS, PATENT AND OTHERWISE, ARE RESERVED BY SOUTHCO, INC.</small> | | SIZE B | SYSTEM NX |
| PER ASME Y14.5M-1994 | | DWG NO. J-R4-10-10-506 | SCALE 1:1 |
| | | DRAWN BY CMG/DGJ | DATE 22JUN2015 |
| | | SHEET 2 OF 2 | |

6

5

4

3

2

1