

6

5

4

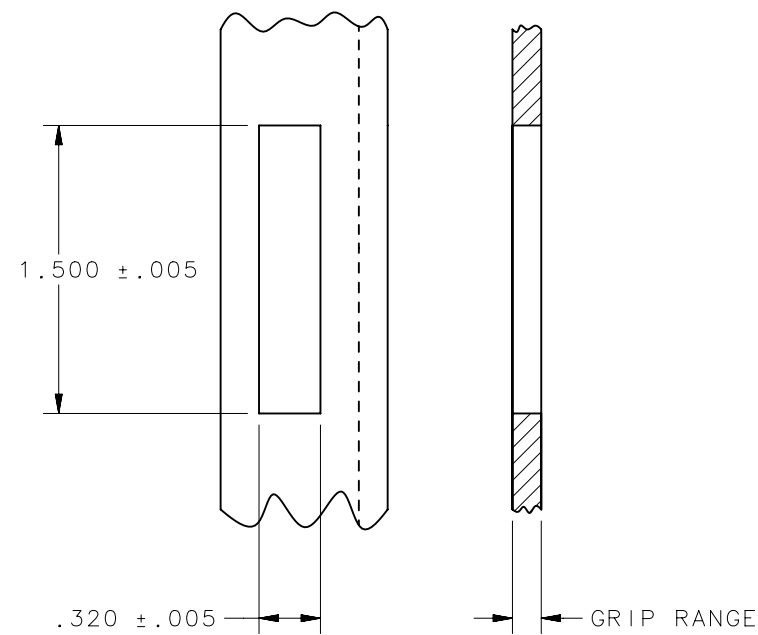
3

2

1

REVISION HISTORY			
REV	DATE	BY	DESCRIPTION
B	16JUL2015	DJS/CMS	PRN: P2015-1407

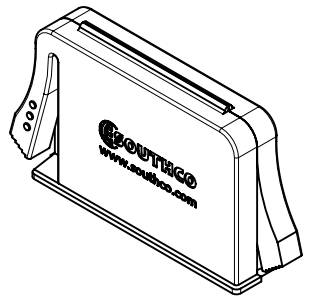
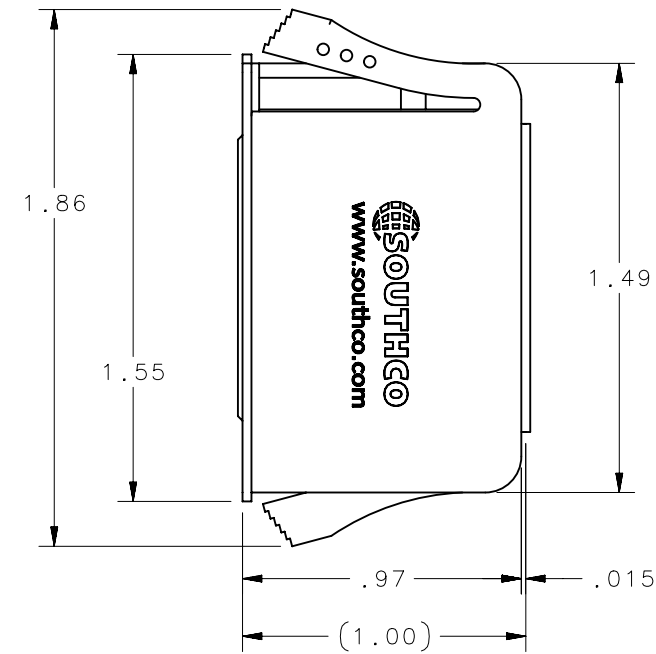
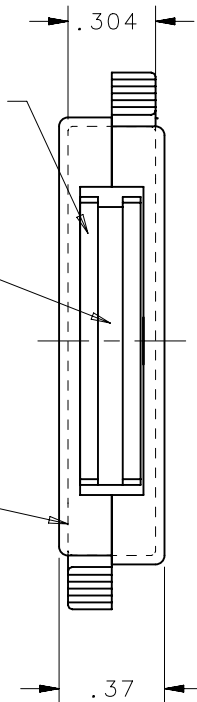
PANEL PREPARATION



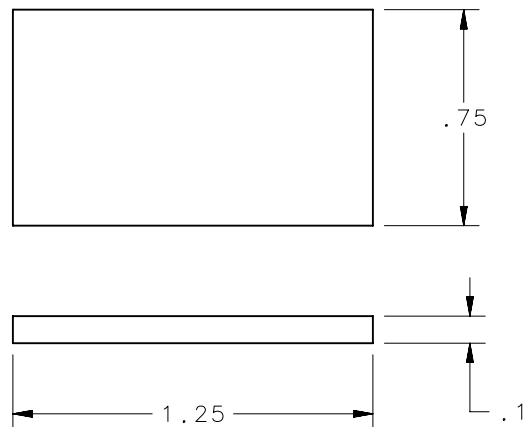
POLE PIECE (2)-1010 STEEL  
ZINC PLATE BRIGHT  
PER ASTM B633

MAGNET, BARIUM  
FERRITE

HOUSING,  
POLYPROPYLENE  
BLACK



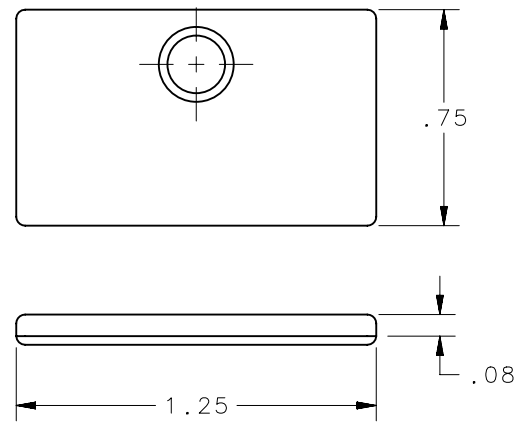
SCALE 1:1



PART NO.: 02-14-101-14  
MATERIAL: 1010 STEEL  
FINISH: ZINC PLATE-BRIGHT  
PER ASTM B633.

REMOVE PROTECTIVE PAPER,  
POSITION KEEPER ON FACE OF  
INSTALLED LATCH AND CLOSE  
DOOR AGAINST ADHESIVE  
SURFACE OF KEEPER.

NOTE: MAKE SURE SURFACE  
OF DOOR IS CLEAN AND  
CAPABLE OF RETAINING A  
SATISFACTORY ADHESIVE BOND.



PART NO.: 02-14-102-11  
MATERIAL: 1010 STEEL  
FINISH: ZINC PLATE-BRIGHT  
PER ASTM B633.

ATTACH WITH NO. 5 FLAT  
HEAD SCREW.

NOTES:

1. INSTALLATION FOR MAGNETIC DOORS: SNAP LATCH INTO HOLE IN FRAME AND CLOSE DOOR.
2. INSTALLATION FOR NON-MAGNETIC DOORS: USE KEEPER PART NO. 02-14-101-14 OR 02-14-102-11. ORDER SEPARATELY BY PART NO.
3. PART NUMBER 02-10-101-10 SHOWN
4. RoHS COMPLIANT

02-10-101-10		.020 TO .080	
SOUTHCO PART NUMBER		GRIP	
THIRD ANGLE PROJECTION			
INCHES [MM]			
TOLERANCES UNLESS OTHERWISE NOTED		DESCRIPTION NO. 02 MAGNETIC LATCH	
ALL DIMENSIONS WITHOUT TOLERANCES ARE FOR REFERENCE ONLY.		SIZE B	SYSTEM NX
PER ASME Y14.5M-1994		DWG NO. J-02-10-101-10-T	DATE 29JAN2013
DRAWN BY CMS/DGJ		SCALE 1.5:1	SHEET 1 OF 1

6

5

4

3

2

1