

6

5

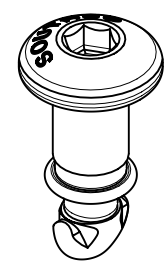
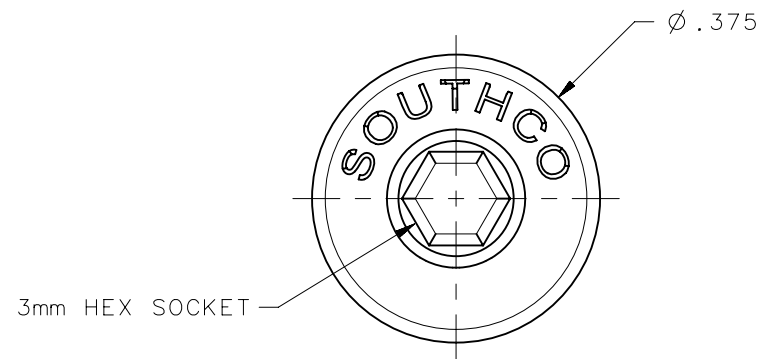
4

3

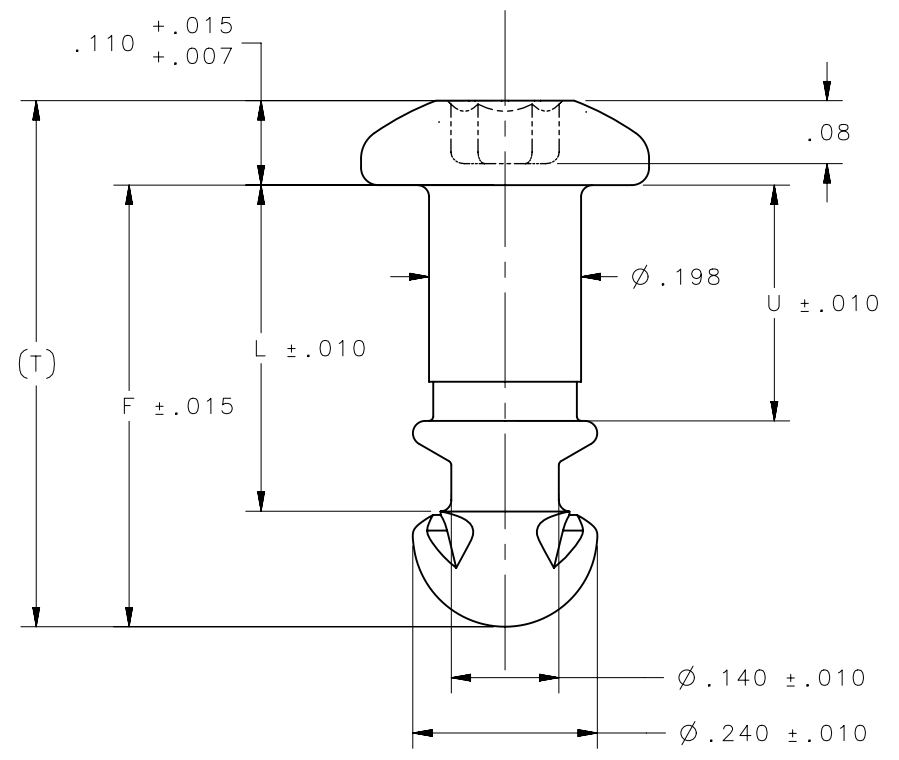
2

1

REVISION HISTORY			
REV	DATE	BY	DESCRIPTION
J	18MAY2021	CMS/JCG	PRN: P2021-0961



SCALE 2:1



SOUTHCO PART NUMBER	U	L	F	T
82-78-040-XX	.067	.185	.335	.445
82-78-060-XX	.087	.205	.355	.465
82-78-080-XX	.107	.225	.375	.485
82-78-100-XX	.127	.245	.395	.505
82-78-120-XX	.147	.265	.415	.525
82-78-140-XX	.167	.285	.435	.545
82-78-160-XX	.187	.305	.455	.565
82-78-180-XX	.207	.325	.475	.585
82-78-200-XX	.227	.345	.495	.605
82-78-220-XX	.247	.365	.515	.625
82-78-240-XX	.267	.385	.535	.645
82-78-260-XX	.287	.405	.555	.665
82-78-280-XX	.307	.425	.575	.685
82-78-300-XX	.327	.445	.595	.705
82-78-320-XX	.347	.465	.615	.725
82-78-340-XX	.367	.485	.635	.745
82-78-360-XX	.387	.505	.655	.765
82-78-380-XX	.407	.525	.675	.785
82-78-400-XX	.427	.545	.695	.805
82-78-420-XX	.447	.565	.715	.825
82-78-440-XX	.467	.585	.735	.845
82-78-460-XX	.487	.605	.755	.865
82-78-480-XX	.507	.625	.775	.885
82-78-500-XX	.527	.645	.795	.905

SOUTHCO PART NUMBER	U	L	F	T
82-78-520-XX	.547	.665	.815	.925
82-78-540-XX	.567	.685	.835	.945
82-78-560-XX	.587	.705	.855	.965
82-78-580-XX	.607	.725	.875	.985
82-78-600-XX	.627	.745	.895	1.005
82-78-620-XX	.647	.765	.915	1.025
82-78-640-XX	.667	.785	.935	1.045
82-78-660-XX	.687	.805	.955	1.065
82-78-680-XX	.707	.825	.975	1.085
82-78-700-XX	.727	.845	.995	1.105
82-78-720-XX	.747	.865	1.015	1.125
82-78-740-XX	.767	.885	1.035	1.145
82-78-760-XX	.787	.905	1.055	1.165
82-78-780-XX	.807	.925	1.075	1.185
82-78-800-XX	.827	.945	1.095	1.205
82-78-820-XX	.847	.965	1.115	1.225
82-78-840-XX	.867	.985	1.135	1.245
82-78-860-XX	.887	1.005	1.155	1.265
82-78-880-XX	.907	1.025	1.175	1.285
82-78-900-XX	.927	1.045	1.195	1.305
82-78-920-XX	.947	1.065	1.215	1.325
82-78-940-XX	.967	1.085	1.235	1.345
82-78-960-XX	.987	1.105	1.255	1.365
82-78-980-XX	1.007	1.125	1.275	1.385
82-78-1000-XX	1.027	1.145	1.295	1.405

- NOTES:
- MATERIAL AND FINISH:
 - 16 - 1008/1010 STEEL PER ASTM A510, CASE HARDENED, ZINC PLATE, CHROMATE PLUS SEALER
 - 20 - 302 HQ STAINLESS STEEL PER ASTM A493, PASSIVATED
 - 44 - 302 HQ STAINLESS STEEL PER ASTM A493, BLACK OXIDE
 - 52 - 1880/1010 STEEL PER ASTM A510, CASE HARDENED, ZINC PLATE PLUS BLACK ORGANIC COATING.

82-78-YYY-XX		STUD		SEE NOTE 1		SEE NOTE 1	
SOUTHCO PART NUMBER		TYPE OF COMPONENT		MATERIAL		FINISH	
CAGE CODE	75618	THIRD ANGLE PROJECTION		 CONNECT • CREATE • INNOVATE			
		INCHES [MM]					
		TOLERANCES UNLESS OTHERWISE NOTED		DESCRIPTION			
		ALL DIMENSIONS WITHOUT TOLERANCES ARE FOR REFERENCE ONLY.		SOUTHCO No. 82 HEX SOCKET OVAL HEAD STUD			
PROPRIETARY ITEM		SIZE	SYSTEM	DWG NO.			
EXCEPT FOR USES EXPRESSLY GRANTED IN WRITING, INFORMATION DISCLOSED HEREON IS CONFIDENTIAL AND ALL RIGHTS, PATENT AND OTHERWISE, ARE RESERVED BY SOUTHCO, INC.		B	NX	J-82-78-16-1			
		PER ASME Y14.5M-1994		DRAWN BY	DATE	SCALE	SHEET
				SJM	300CY1981	4:1	1 OF 1

6

5

4

3

2

1