

southco

PROPRIETARY ITEM - EXCEPT FOR USES EXPRESSLY GRANTED IN WRITING INFORMATION DISCLOSED HEREON IS CONFIDENTIAL AND ALL RIGHTS PATENT AND OTHERWISE ARE RESERVED BY SOUTHCO, INC.

No.82 RECEPTACLE - RIVET TYPE

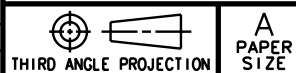
DATE	DRAWN	CHKD	SCALE
29MAR2001	RJB	JGK	2:1

DRAWING NUMBER
J-82-35-295

REV	DATE	DRAWN/CHKD	DESCRIPTION	ITEM	PART NUMBER	MATERIAL	FINISH
A	13AUG2003	RLR/VNI	PRN:P2003-0689	ASSEMBLY	82-35-295-15	-	ZINC FLAKE COATING
B	12APR2005	BRP/RLR	PRN:P2005-0589	SPRING	-	HARDENED SPRING STEEL	-
C	19JUL2007	JDH	PRN:P2007-0934	EYELET	-	STEEL	-
D	08FEB2023	CMS/FC	PRN:P2023-0253	ASSEMBLY	82-35-295-20	-	PASSIVATED
				SPRING	-	17-7 STAINLESS STEEL	-
				EYELET	-	302 STAINLESS STEEL	-
				ASSEMBLY	82-35-295-31	-	BLACK OXIDE FINISH
				SPRING	-	HARDENED SPRING STEEL	-
				EYELET	-	STEEL	-
				ASSEMBLY	82-35-295-58	-	-
				SPRING	-	17-7 STAINLESS STEEL	BLACK ORGANIC COATING
				EYELET	-	302 STAINLESS STEEL	-

INCHES

ALL DIMENSIONS WITHOUT TOLERANCES ARE FOR REFERENCE ONLY.



- NOTES:
- A. SPRING MUST FLOAT FREELY AS BEFORE IT WAS RIVETED TO THE PANEL.
 - B. SEE SOUTHCO DRAWING NUMBER J-82-46 THE RIVETING PROCEDURE.
 - C. CRACKING: SLIGHT CRACKING ON EYELETS AFTER FORMING ALLOWED. CRACKS SHOULD NOT BE VISIBLE AT ARMS LENGTH.

