
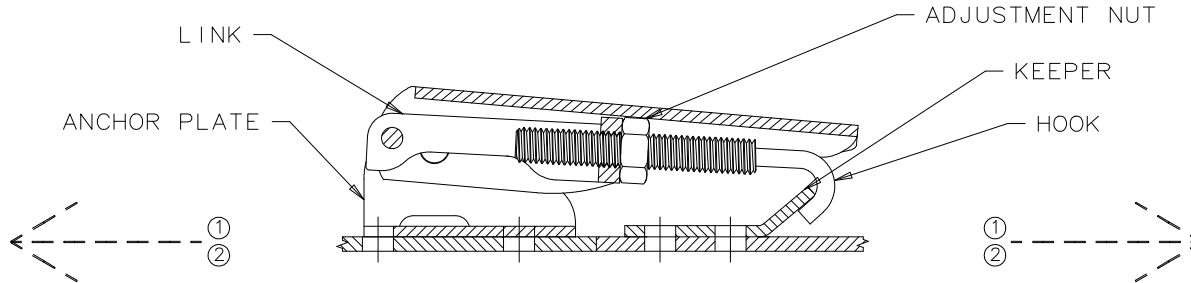


| REV | DATE | DRAWN/CHKD | DESCRIPTION |
|-----|-----------|------------|------------------|
| A | 30APR99 | GDM | SEE RECORD PRINT |
| B | 09APR2002 | GDM | UPDATE FORMAT |

THIRD ANGLE PROJECTION  A PAPER SIZE

SOUTHCO PERFORMANCE GUIDELINES
THE PERFORMANCE GUIDELINES SHOWN ON THIS PAGE ARE SUPPLIED AS A GENERAL GUIDE ONLY, AS CONDITIONS VARY WITH EACH APPLICATION AND METHOD OF INSTALLATION. STRENGTH DATA GIVEN IS FOR FAILURE OF THE PRODUCT OR FOR SUFFICIENT DEFORMATION TO MAKE PRODUCT INOPERABLE. NO SAFETY FACTOR HAS BEEN APPLIED IT IS RECOMMENDED THAT THE USER REQUEST A PRODUCT SAMPLE FOR TESTING TO DETERMINE THE SUITABILITY OF THE PRODUCT FOR THE PURPOSE INTENDED AND USER'S PARTICULAR APPLICATION.



91-512-XX LATCH WITH
91-600-XX KEEPER SHOWN

| PART NUMBER | MAX RECOMMENDED ① WORKING LOAD N (lbf) | AVERAGE ULTIMATE LOAD ② N (lbf) | MAX RECOMMENDED TORQUE ③ ON ADJUSTMENT NUT N•cm (lbf•in) |
|------------------------------|--|---------------------------------------|--|
| 91-5X2-07 WITH 91-600-07 | 1325 (300) | 1550 (350) | 226 (20) |
| 91-5X2-07 WITH K4-2338-07 | 1550 (350) | 2200 (500) | |
| 91-5X2-52 WITH 91-600-52 | 1550 (350) | 2000 (450) | 565 (50) |
| 91-5X2-52 WITH K4-2338-52 | 1550 (350) | 2200 (500) | |

① WORKING LOAD IS THE MAXIMUM FORCE THAT THE PRODUCT WILL WITHSTAND WITHOUT AFFECTING THE OPERATION OR APPEARANCE OF THE PRODUCT.

② AVERAGE ULTIMATE LOAD CAUSES FAILURE OF THE PRODUCT OR SUFFICIENT DEFORMATION TO MAKE THE PRODUCT INOPERABLE.

③ RECOMMENDED TORQUE IS THE MAXIMUM FORCE THAT THE PRODUCT WILL WITHSTAND WITHOUT AFFECTING THE OPERATION OF THE PRODUCT.