

DRAWING NUMBER

TD-64

SCALE

CHG

DRAWN

DATE

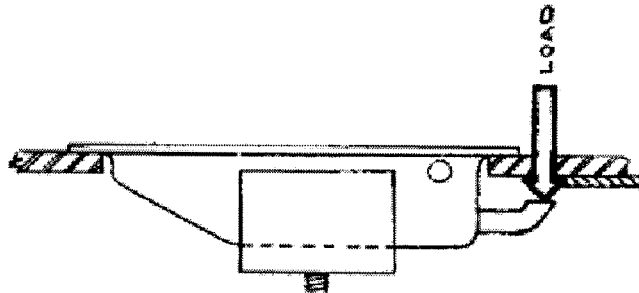
2-17-70

NO 64 PADDLE LATCH

southco®

General Performance Guidelines

The information shown on this page was determined under one set of test conditions and is supplied as a general guide only, as conditions vary with each application. Strength data given is for failure of the product or for sufficient deformation to make the product inoperable. No safety factor has been applied. It is recommended that the user test the product for his particular application.



NO 64 PADDLE LATCH - 100 SERIES

Pln 64-10-101-70

FASTENER YIELDED WHEN A LOAD OF 50 LB.
WAS APPLIED IN THE DIRECTION OF THE ARROW.

DRAWING NUMBER

TD-64-1

PROPRIETARY ITEM. EXCEPT FOR USER EXPRESSLY GRANTED IN WRITING, THE
INFORMATION DISCLOSED HEREON IS CONFIDENTIAL AND ALL RIGHTS, PATENTS AND
OTHERS ARE RESERVED BY SOUTHCO INC.