

**southco®**

PROPRIETARY ITEM - EXCEPT FOR USES EXPRESSLY GRANTED IN WRITING INFORMATION DISCLOSED HEREON IS CONFIDENTIAL AND ALL RIGHTS PATENT AND OTHERWISE ARE RESERVED BY SOUTHCO, INC.

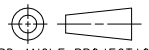
No. 56 PLUNGER ASSEMBLY, 300 & 400 SERIES WITHOUT STAY-OPEN FEATURE

DATE	DRAWN	CHKD	SCALE	DRAWING NUMBER
18JUN1985	RJB		1:1	N-21449-J

REV	DATE	DRAWN/CHKD	DESCRIPTION	ITEM	MATERIAL	FINISH
B	06JAN2004	AAB/JSS	PRN: P2004-0011	KNOB	ALUMINIUM	NATURAL
C	29JUL2005	CSC/MDY	PRN: P2005-0957	STUD	STEEL	SEE NOTE A
D	06APR2006	RLR/MDY	PRN: P2006-0493	SHELL	STEEL	SEE NOTE A
E	23FEB2012	CMS/JED	PRN: P2011-1240	SLEEVE	STEEL	SEE NOTE A
				SPRING	STAINLESS STEEL	PASSIVATED

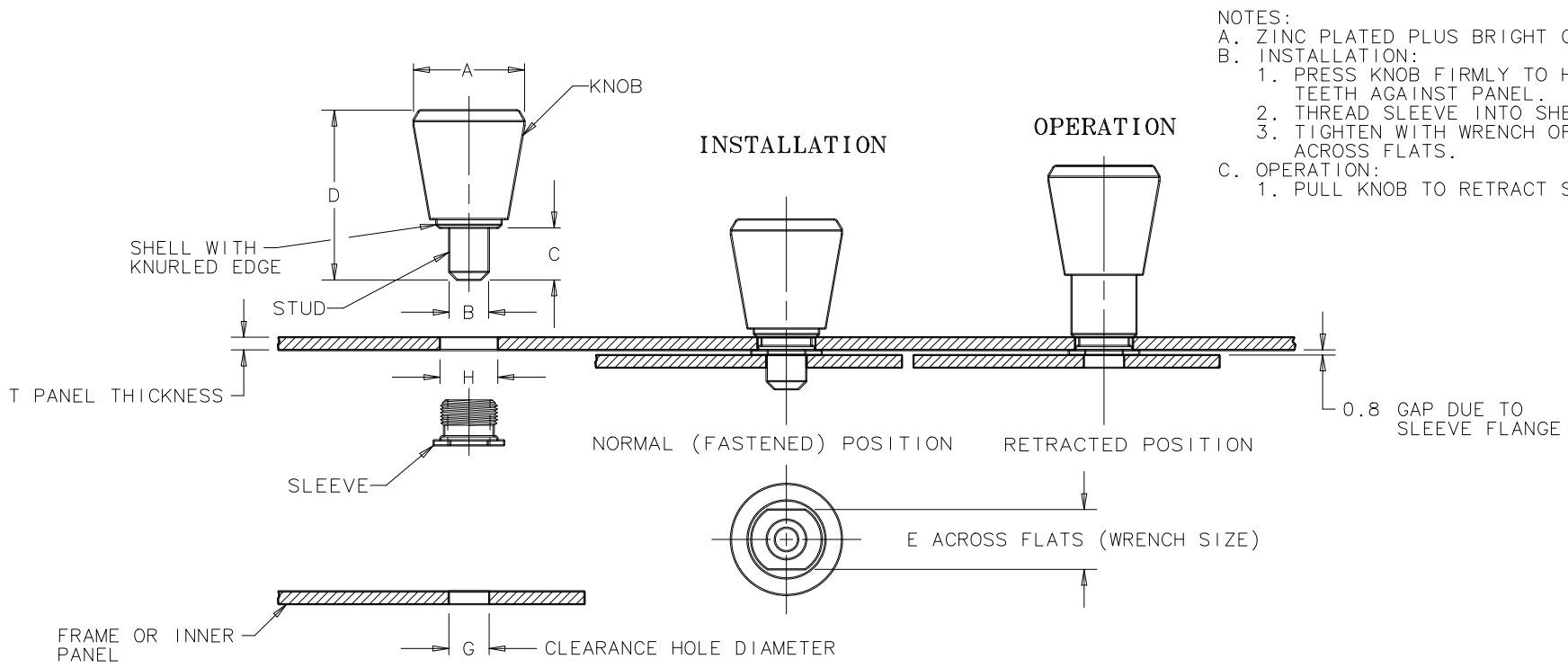
**MILLIMETERS**

ALL DIMENSIONS WITHOUT TOLERANCES ARE FOR REFERENCE ONLY.



THIRD ANGLE PROJECTION

A4 PAPER SIZE



PART NUMBER	T MIN	T MAX	H±0.08	A	B	C	D	E	F	G <sup>+0.08</sup> <sub>-0.03</sub>
56-99-196-20	0.64	1.52	7.14	13.5	4.65	6.4	19.8	7.1	5.6	4.78
56-99-197-20	0.79	3.18	9.12	17.5	6.22	7.92	26.2	9.5	7.1	6.35