

DATE	DRAWN	CHKD	SCALE
18JUN92	JGK		3/4

ASSEMBLY PART NUMBERS AND DESCRIPTION

PANEL THICKNESS	SHORT LEVER GRIP RANGE*	BLACK ASSEMBLY WITH PLATED STEEL HARDWARE
1-11	1-14	C5-11-15
11-21		C5-12-15

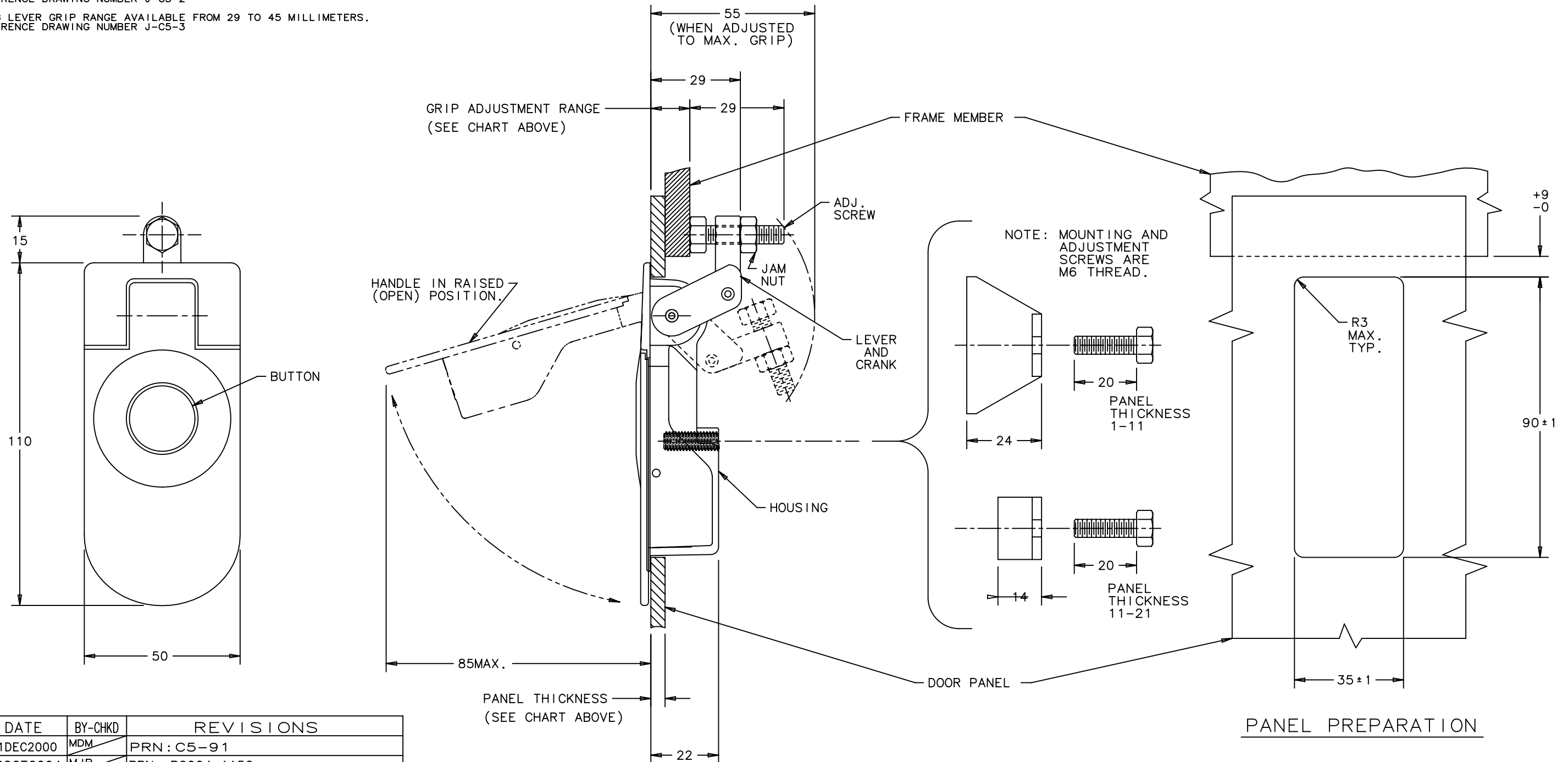
* MEDIUM LEVER GRIP RANGE AVAILABLE FROM 14 TO 29 MILLIMETERS. REFERENCE DRAWING NUMBER J-C5-2

LONG LEVER GRIP RANGE AVAILABLE FROM 29 TO 45 MILLIMETERS. REFERENCE DRAWING NUMBER J-C5-3

MATERIAL AND FINISH

LATCH ASSEMBLY CONSISTS OF:
 HOUSING, HANDLE AND BUTTON:
 DIE CAST ZINC, BLACK POWDER
 COAT WITH STEEL HARDWARE
 LEVER AND CRANK: DIE CAST ZINC,
 COATED WITH CLEAR CHEMICAL
 PROTECTIVE FILM.
 BLACK TORSION SPRING: 303 STAINLESS
 STEEL, PASSIVATED.
 ROLL PINS: 420 STAINLESS STEEL,
 PASSIVATED.
 O-RINGS: BUNA-N RUBBER, NATURAL.

HARDWARE CONSISTS OF:
 MOUNTING BRACKET
 MOUNTING SCREW
 ADJUSTING SCREW
 JAM NUT
 1010 STEEL, ZINC PLATED
 WITH SEALED CHROMATE.



REV.	DATE	BY-CHKD	REVISIONS
D	21DEC2000	MDM	PRN: C5-91
E	08OCT2004	MJR MDY	PRN: P2004-1152
F	17MAY2022	CMS JDC	PRN: P2022-0882

THIRD ANGLE PROJECTION,
 ALL DIMENSIONS ARE MILLIMETERS.