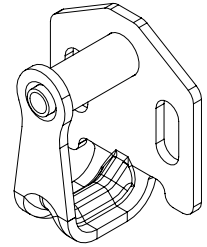
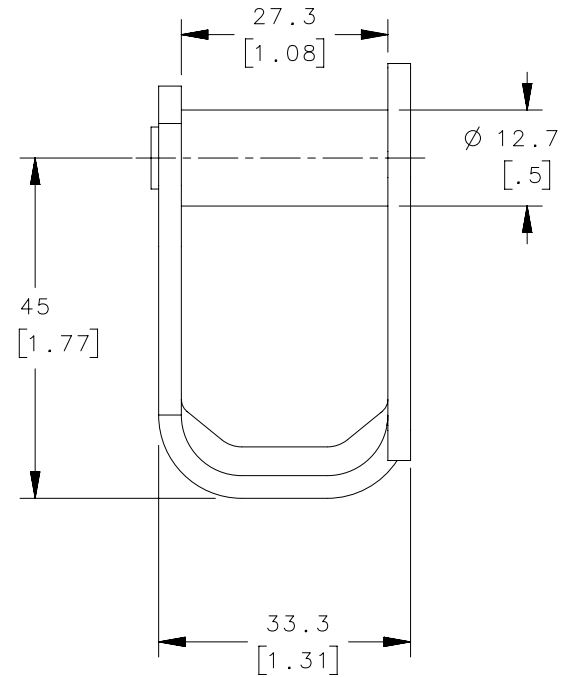
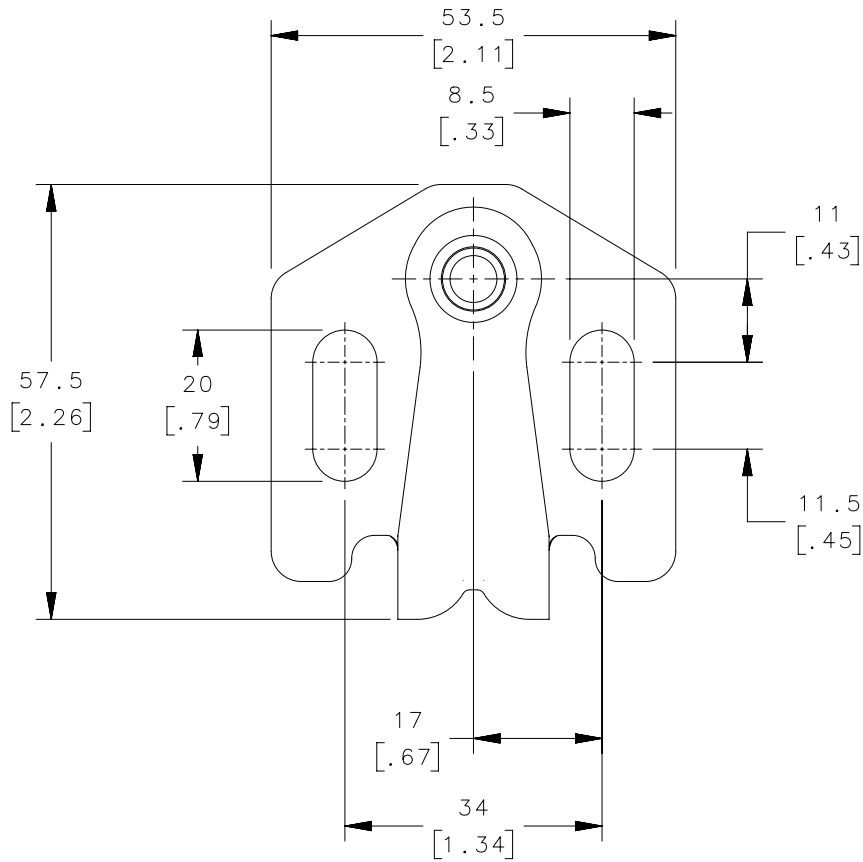


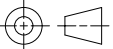
REVISION HISTORY			
REV	DATE	BY	DESCRIPTION
B	14FEB2020	CAB/DM	PRN: P2020-0299



SCALE 1:2

NOTES:

- ATTACH STRIKER USING M8 SCREWS.

R4-90-1005-10		STRIKER		STEEL		ZINC PLATE, BRIGHT CHROMATE	
PART NUMBER		TYPE OF COMPONENT		MATERIAL		FINISH	
CPB NUMBER 2017-0297		THIRD ANGLE PROJECTION		 southco [®] CONNECT • CREATE • INNOVATE			
		MILLIMETERS [IN]					
SURFACE AREA mm ²		TOLERANCES UNLESS OTHERWISE NOTED		DESCRIPTION STRIKER			
VOLUME mm ³		ALL DIMENSIONS WITHOUT TOLERANCES ARE FOR REFERENCE ONLY.		SIZE A4		SYSTEM NX	
PROPRIETARY ITEM EXCEPT FOR USES EXPRESSLY GRANTED IN WRITING, INFORMATION DISCLOSED HEREON IS CONFIDENTIAL AND ALL RIGHTS, PATENT AND OTHERWISE, ARE RESERVED BY SOUTHCO, INC.		PER ASME Y14.5M-1994		DWG NO. J-R4-90-1005		DRAWN BY CAB	
				DATE 14FEB2020		SCALE 1:1	
						SHEET 1 OF 1	