

6

5

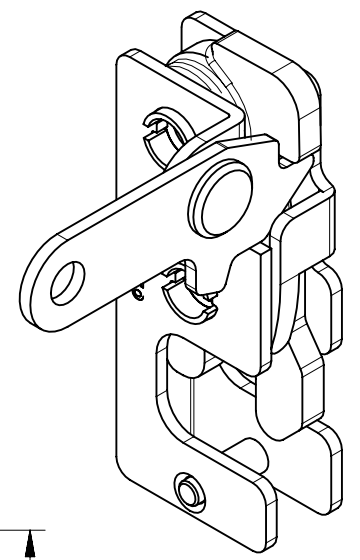
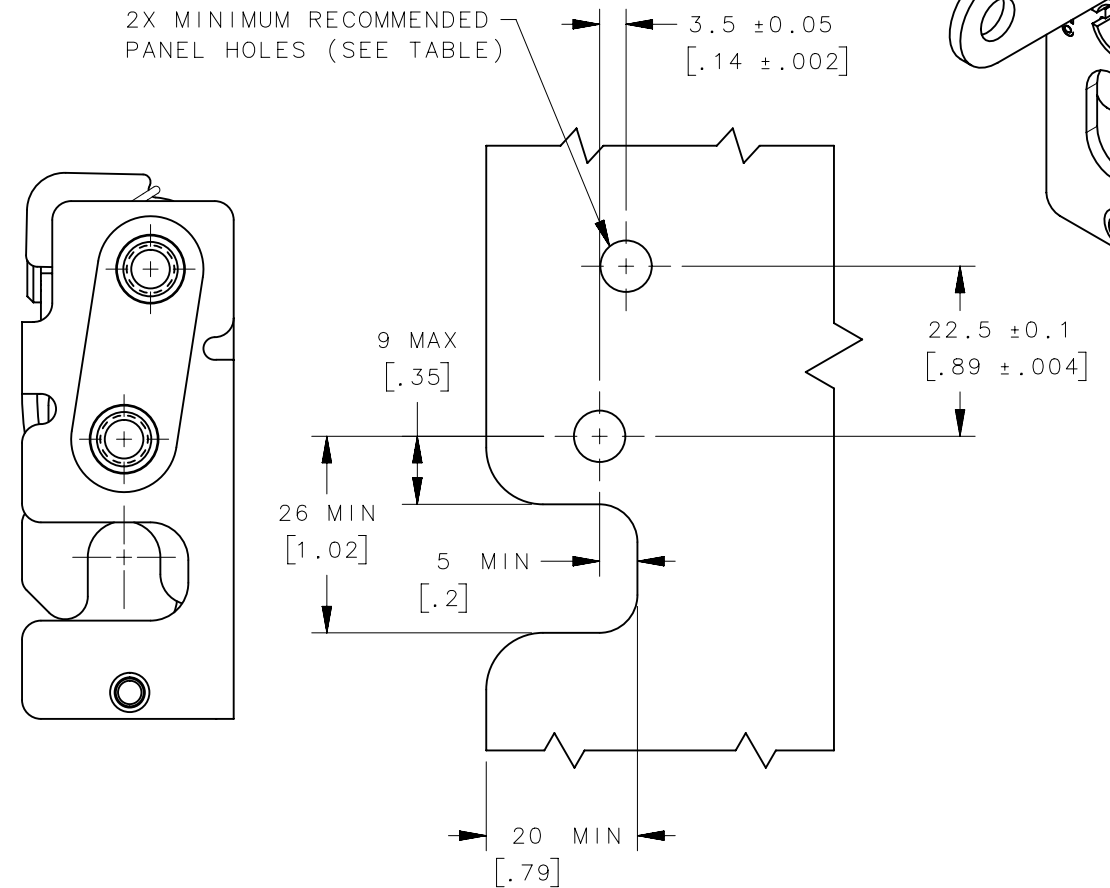
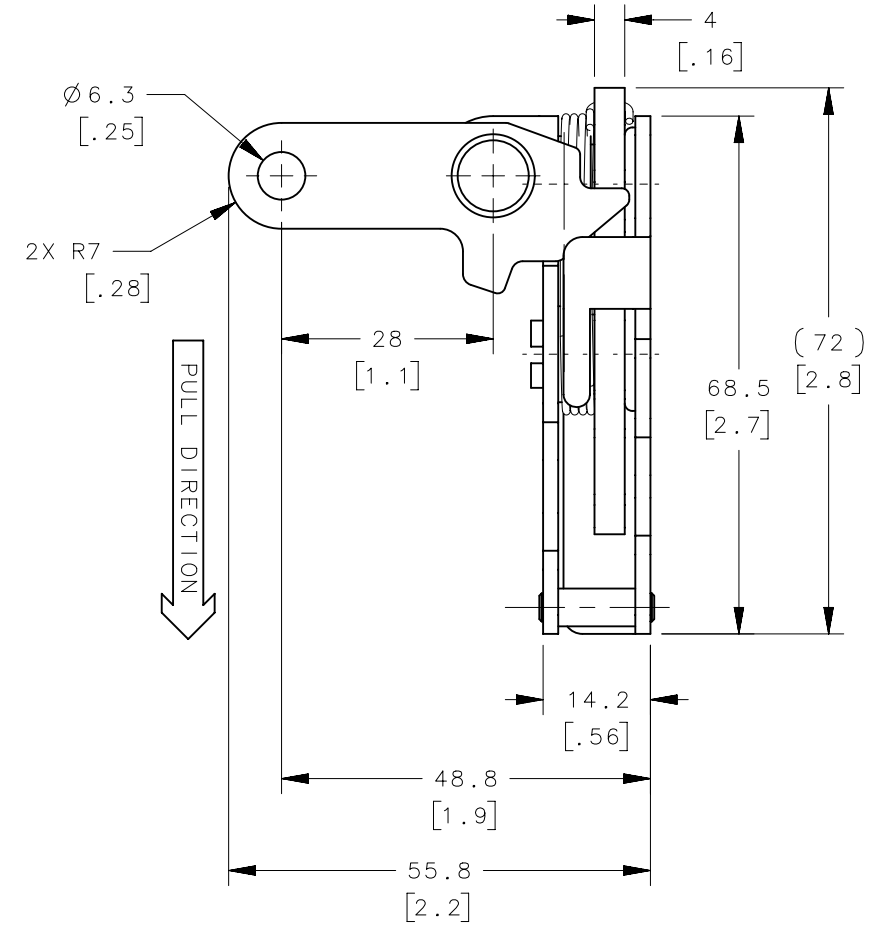
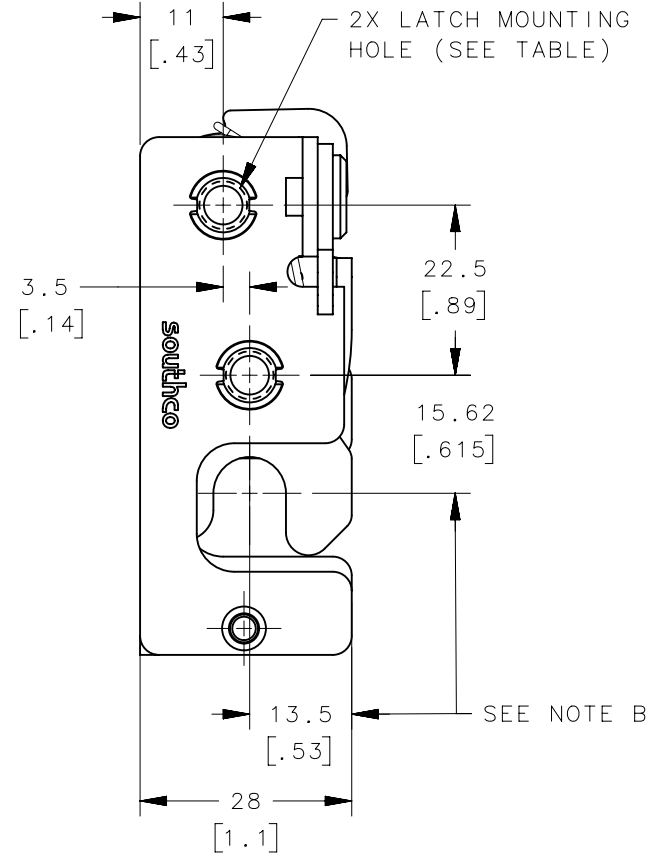
4

3

2

1

REVISION HISTORY			
REV	DATE	BY	DESCRIPTION
B	07APR2014	CMS/BGL	PRN: P2014-0634



PANEL PREPARATION

- NOTES:
- A. MATERIAL AND FINISH:
 - ALL PARTS STAINLESS STEEL.
 - B. THESE DIMENSIONS REQUIRED FOR MOUNTING STRIKER BOLT.

R4-10-20-101-20	Ø 7.2mm THRU	Ø 7.6 [.299]	
R4-10-21-101-20	1/4-20 THREAD	Ø 6.8 [.268]	
R4-10-22-101-20	M6 THREAD	Ø 6.4 [.252]	
ASSEMBLY PART NUMBER	LATCH MOUNTING HOLE	MINIMUM RECOMMENDED PANEL HOLE	GENERAL NOTES
THIRD ANGLE PROJECTION			
MILLIMETERS [IN]			
TOLERANCES UNLESS OTHERWISE NOTED		DESCRIPTION	
ALL DIMENSIONS WITHOUT TOLERANCES ARE FOR REFERENCE ONLY.		R4 STAINLESS STEEL MINI ROTARY LATCH PERPENDICULAR - LEFT HAND	
PER ASME Y14.5M-1994		SIZE B	SYSTEM NX
EXCEPT FOR USES EXPRESSLY GRANTED IN WRITING, INFORMATION DISCLOSED HEREON IS CONFIDENTIAL AND ALL RIGHTS, PATENT AND OTHERWISE, ARE RESERVED BY SOUTHCO, INC.		DWG NO. J-R4-10-20-101-20	SCALE 1:1
		DATE 09DEC2010	SHEET 1 OF 3

6

5

4

3

2

1

6

5

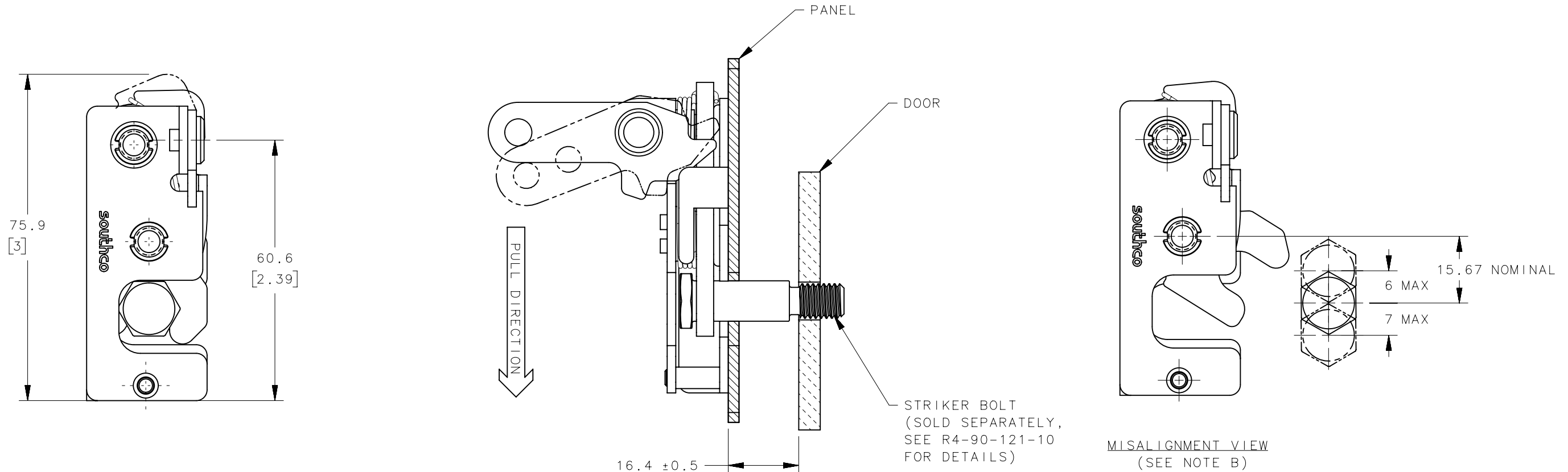
4

3

2

1

REVISION HISTORY			
REV	DATE	BY	DESCRIPTION
B	07APR2014	CMS/BGL	PRN: P2014-0634



NOTES:

- A. THE TOLERANCE BETWEEN THE LATCH AND STRIKER BOLT ASSUMES A NON-RIGID DOOR INSTALLATION THAT WILL ALLOW THE DOOR TO MOVE INTO THE NOMINAL POSITION DURING LATCHING. RIGID DOORS MUST HAVE THE STRIKER INSTALLED PER THE PANEL PREPARATION RECOMMENDATION.
- B. THE MISALIGNMENT VIEW ASSUMES THE LATCH IS CONNECTED TO A PERFECTLY RIGID DOOR AND HINGE; THEREFORE, THERE IS NO DOOR AND/OR HINGE SLACK ASSOCIATED WITH THESE DIMENSIONS. THE MISALIGNMENT VIEW DOES NOT TAKE FLEXING OF THE STRIKER BOLT INTO ACCOUNT.

R4-10-20-101-20	Ø 7.2mm THRU	Ø 7.6 [.299]	
R4-10-21-101-20	1/4-20 THREAD	Ø 6.8 [.268]	
R4-10-22-101-20	M6 THREAD	Ø 6.4 [.252]	
ASSEMBLY PART NUMBER	LATCH MOUNTING HOLE	MINIMUM RECOMMENDED PANEL HOLE	GENERAL NOTES
	THIRD ANGLE PROJECTION		
	MILLIMETERS [IN]		
SURFACE AREA	TOLERANCES UNLESS OTHERWISE NOTED		
VOLUME	ALL DIMENSIONS WITHOUT TOLERANCES ARE FOR REFERENCE ONLY.		
PROPRIETARY ITEM	DESCRIPTION		
EXCEPT FOR USES EXPRESSLY GRANTED IN WRITING, INFORMATION DISCLOSED HEREON IS CONFIDENTIAL AND ALL RIGHTS, PATENT AND OTHERWISE, ARE RESERVED BY SOUTHCO, INC.	R4 STAINLESS STEEL MINI ROTARY LATCH PERPENDICULAR - LEFT HAND		
	PER ASME Y14.5M-1994	SIZE B	SYSTEM NX
		DWG NO. J-R4-10-20-101-20	
		DRAWN BY ACH/JCK	DATE 09DEC2010
		SCALE 1:1	SHEET 2 OF 3

6

5

4

3

2

1

6

5

4

3

2

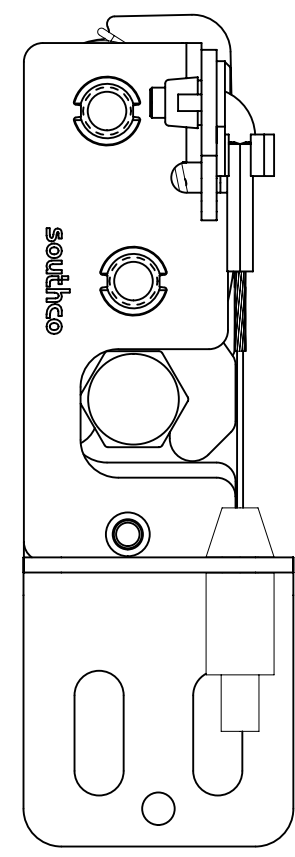
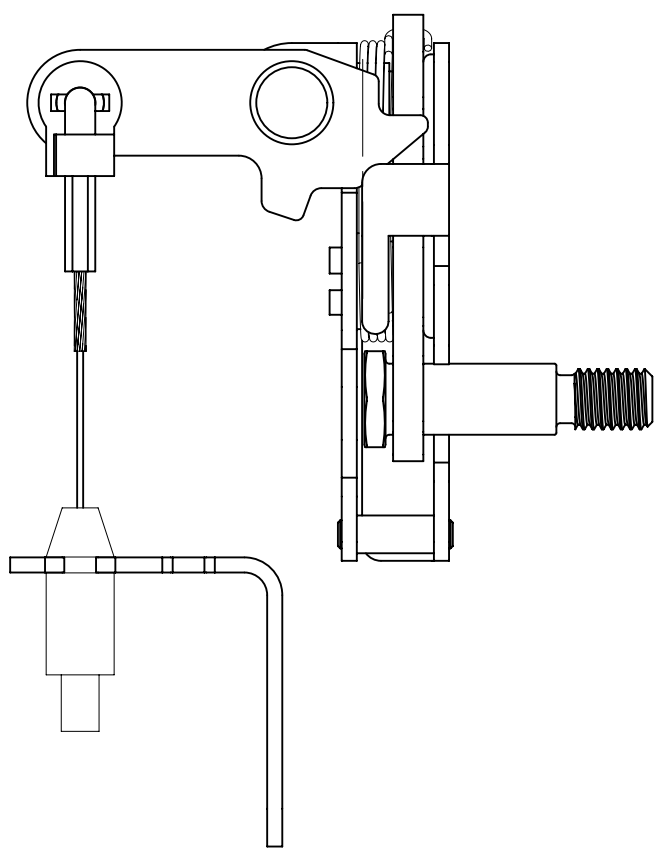
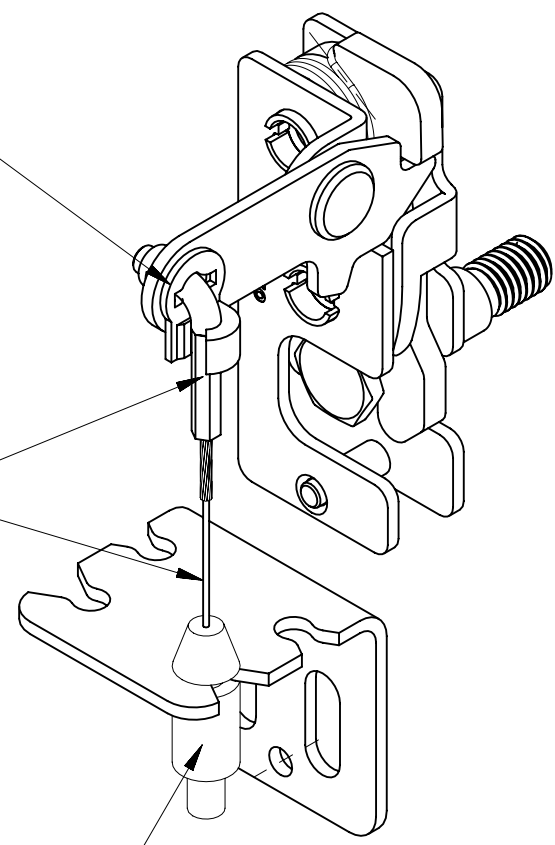
1

REVISION HISTORY			
REV	DATE	BY	DESCRIPTION
B	07APR2014	CMS/BGL	PRN: P2014-0634

OPTIONAL LINK RETAINER
PART NUMBER R4-0-43922
(SOLD SEPARATELY)

CABLE ASSEMBLY
SEE J-AC-C
(CABLE SHOWN WITH
CABLE FITTING "B" IN
A CABLE ASSEMBLY "13")

OPTIONAL CABLE ASSEMBLY
MOUNTING BRACKET
PART NUMBER AC-900-02-10
(SOLD SEPARATELY)



R4-10-20-101-20	Ø 7.2mm THRU	Ø 7.6 [.299]	
R4-10-21-101-20	1/4-20 THREAD	Ø 6.8 [.268]	
R4-10-22-101-20	M6 THREAD	Ø 6.4 [.252]	
ASSEMBLY PART NUMBER	LATCH MOUNTING HOLE	MINIMUM RECOMMENDED PANEL HOLE	GENERAL NOTES
	THIRD ANGLE PROJECTION	 CONNECT • CREATE • INNOVATE	
	MILLIMETERS [IN]		
SURFACE AREA	TOLERANCES UNLESS OTHERWISE NOTED		
VOLUME	ALL DIMENSIONS WITHOUT TOLERANCES ARE FOR REFERENCE ONLY.		
PROPRIETARY ITEM	PER ASME Y14.5M-1994	DESCRIPTION	R4 STAINLESS STEEL MINI ROTARY LATCH PERPENDICULAR - LEFT HAND
EXCEPT FOR USES EXPRESSLY GRANTED IN WRITING, INFORMATION DISCLOSED HEREON IS CONFIDENTIAL AND ALL RIGHTS, PATENT AND OTHERWISE, ARE RESERVED BY SOUTHCO, INC.		SIZE	B
		SYSTEM	NX
		DWG NO.	J-R4-10-20-101-20
		DATE	09DEC2010
		SCALE	1:1
		SHEET	3 OF 3
		DRAWN BY	ACH/JCK

6

5

4

3

2

1