

6

5

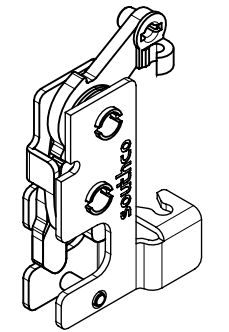
4

3

2

1

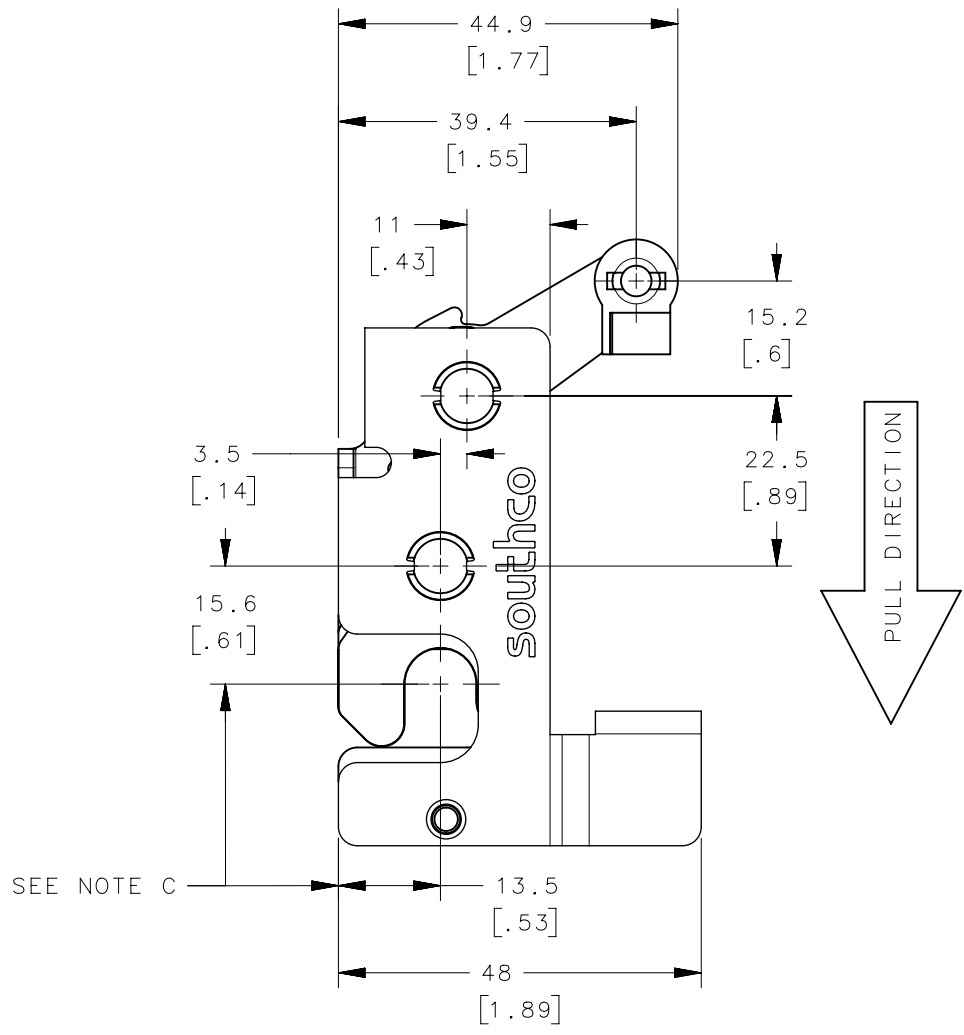
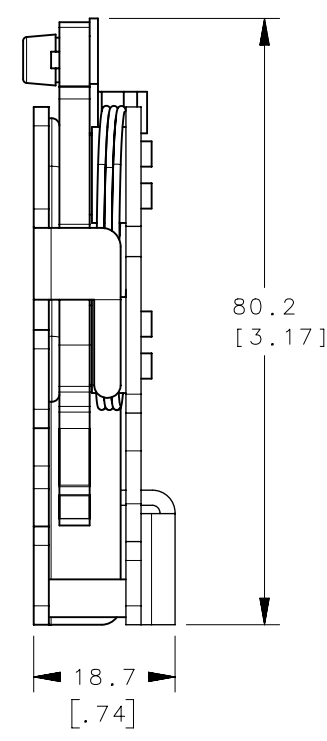
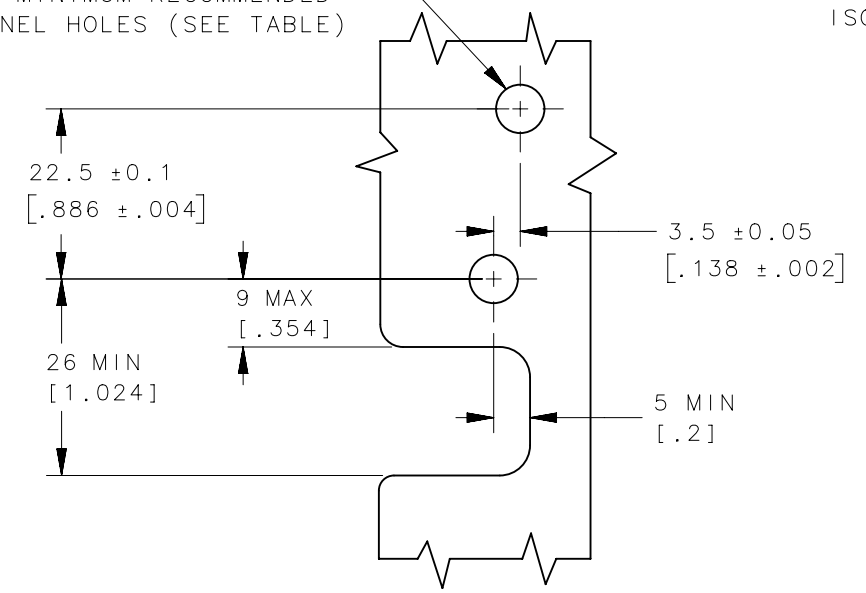
REVISION HISTORY			
REV	DATE	BY	DESCRIPTION
A	19SEP2019	CBI/DMS	PRN: P2019-2361



ISOMETRIC VIEW
SCALE 1:2

PANEL PREPARATION

2X MINIMUM RECOMMENDED
PANEL HOLES (SEE TABLE)



SEE NOTE C

R4-10-32-502-20	M6 THREAD	∅ 6.4 [.252]	DUAL
R4-10-31-502-20	1/4-20 THREAD	∅ 6.8 [.268]	DUAL
R4-10-30-502-20	∅ 7.2 THRU	∅ 7.6 [.299]	DUAL
R4-10-12-502-20	M6 THREAD	∅ 6.4 [.252]	SINGLE
R4-10-11-502-20	1/4-20 THREAD	∅ 6.8 [.268]	SINGLE
R4-10-10-502-20	∅ 7.2 THRU	∅ 7.6 [.299]	SINGLE
PART NUMBER	MOUNTING STYLE	MIN. PANEL HOLE	STAGE

- NOTES:
- A. MATERIAL AND FINISH:
 - 1. HOUSING, LEVER AND INTERNAL COMPONENTS: 300 SERIES STAINLESS STEEL.
 - 2. LINK RETAINER: ACETAL BLACK.
 - B. FOR STEEL VERSION SEE DRAWING J-R4-10-10-502.
 - C. THESE DIMENSIONS REQUIRED FOR MOUNTING STRIKER BOLT.

THIRD ANGLE PROJECTION		 CONNECT • CREATE • INNOVATE	
MILLIMETERS [IN]			
TOLERANCES UNLESS OTHERWISE NOTED		DESCRIPTION	
ALL DIMENSIONS WITHOUT TOLERANCES ARE FOR REFERENCE ONLY.		R4-10 MINI ROTARY LATCH WITH INTEGRATED BRACKET - RIGHT HAND	
PROPRIETARY ITEM		SIZE	DWG NO.
EXCEPT FOR USES EXPRESSLY GRANTED IN WRITING, INFORMATION DISCLOSED HEREON IS CONFIDENTIAL AND ALL RIGHTS, PATENT AND OTHERWISE, ARE RESERVED BY SOUTHCO, INC.		B	NX J-R4-10-10-502-20
PER ASME Y14.5M-1994		DRAWN BY	SCALE
		CBI/DMS	1:1
		DATE	SHEET
		19SEP2019	1 OF 2

6

5

4

3

2

1

6

5

4

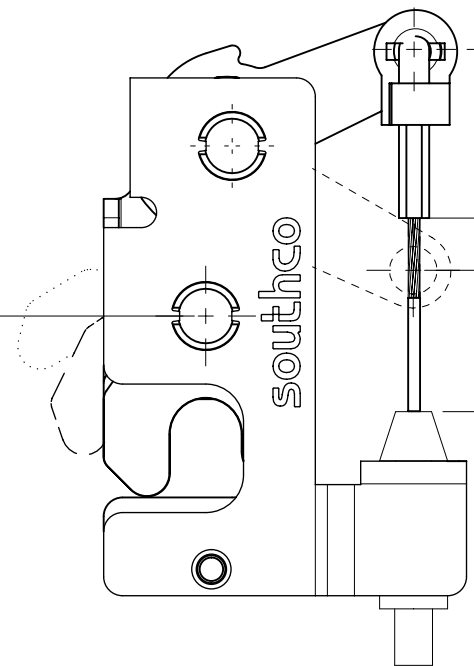
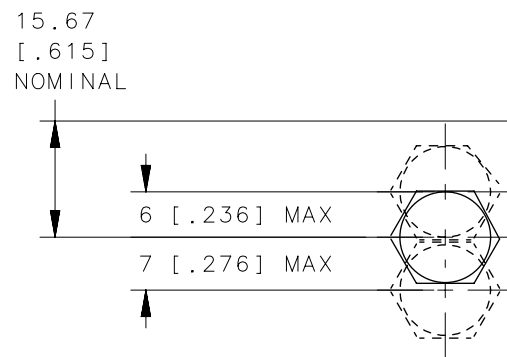
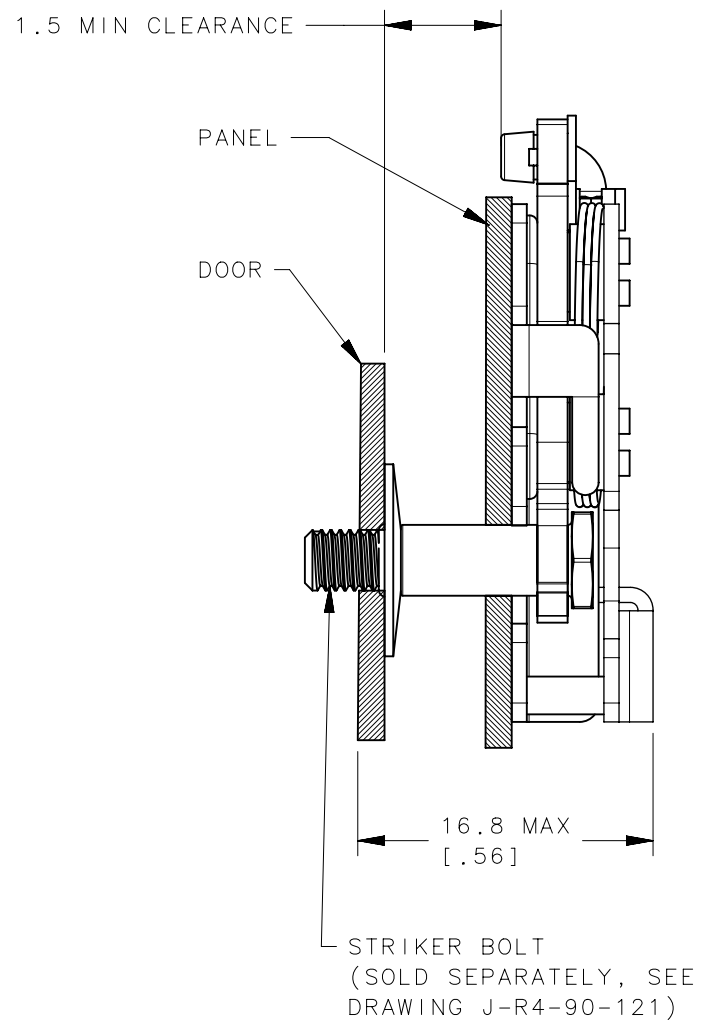
3

2

1

REVISION HISTORY			
REV	DATE	BY	DESCRIPTION
A	19SEP2019	CBI/DMS	PRN: P2019-2361

MISALIGNMENT VIEW
(SEE NOTE B)



AMOUNT OF
TRIGGER TRAVEL
6.4 MIN
[.25]
27 MAX
[1.06]

TLC = 29 FOR CABLE ASSEMBLIES
TYPE 3 AND 7 (SOLD SEPARATELY,
SEE DRAWING J-AC-C)

- FULLY LATCHED POSITION
- - - - - SECONDARY LATCHED POSITION
- UNLATCHED POSITION

NOTES:

- A. THE TOLERANCE BETWEEN THE LATCH AND STRIKER BOLT ASSUMES A NON-RIGID DOOR INSTALLATION THAT WILL ALLOW THE DOOR TO MOVE INTO THE NOMINAL POSITION DURING LATCHING. RIGID DOORS MUST HAVE THE STRIKER INSTALLED PER THE PANEL PREPARATION RECOMMENDATION.
- B. THE MISALIGNMENT VIEW ASSUMES THE LATCH IS CONNECTED TO A PERFECTLY RIGID DOOR AND HINGE; THEREFORE, THERE IS NO DOOR AND/OR HINGE SLACK ASSOCIATED WITH THESE DIMENSIONS. THE MISALIGNMENT VIEW DOES NOT TAKE FLEXING OF THE STRIKER BOLT INTO ACCOUNT.

	THIRD ANGLE PROJECTION			 CONNECT • CREATE • INNOVATE	
	MILLIMETERS [IN]				
SURFACE AREA	TOLERANCES UNLESS OTHERWISE NOTED		DESCRIPTION		
VOLUME	ALL DIMENSIONS WITHOUT TOLERANCES ARE FOR REFERENCE ONLY.		R4-10 MINI ROTARY LATCH WITH INTEGRATED BRACKET - RIGHT HAND		
PROPRIETARY ITEM	PER ASME Y14.5M-1994	SIZE	SYSTEM	DWG NO.	
EXCEPT FOR USES EXPRESSLY GRANTED IN WRITING, INFORMATION DISCLOSED HEREON IS CONFIDENTIAL AND ALL RIGHTS, PATENT AND OTHERWISE, ARE RESERVED BY SOUTHCO, INC.		B	NX	J-R4-10-10-502-20	
		DRAWN BY	DATE	SCALE	SHEET
		CBI/DMS	19SEP2019	1:1	2 OF 2

6

5

4

3

2

1