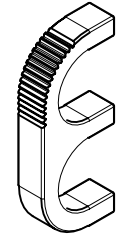
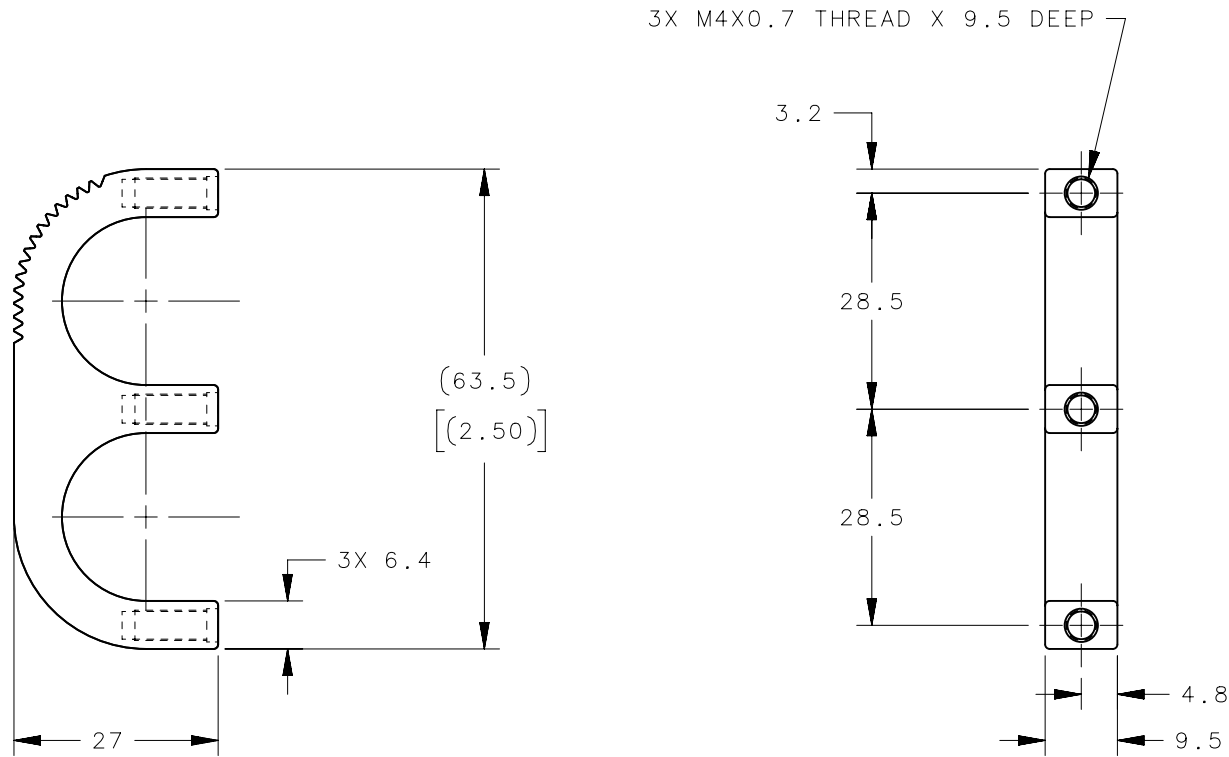


REVISION HISTORY			
REV	DATE	BY	DESCRIPTION
D	18AUG2016	RNG/YGC	PRN: P2016-1911



SCALE 1:2

NOTES:

- COSMETIC SPECIFICATION:**
ALL SURFACES UNLESS OTHERWISE NOTED ARE TO CONFORM TO A CLASS "B" DESIGNATION AS DESCRIBED IN SOUTHCO COSMETIC SPECIFICATION: S-121-03 FOR POWDER COATING S-121-06 FOR ANODIZED FINISH
- RoHS COMPLIANT.
- INSTALLATION**
SCREW LENGTH= THICKNESS OF PANEL PLUS 9.5
ATTACH WITH M4X0.7 SCREW NOT SUPPLIED.
(USE 5.0 DIA. HOLES IN PANEL)

B4-50-203-75	PULL	6063 ALUMINUM	SILVER POWDER COATED
B4-50-203-15	PULL	6063 ALUMINUM	BLACK ANODIZED
B4-50-203-12	PULL	6063 ALUMINUM	BLACK POWDER COATED
B4-50-203-11	PULL	6063 ALUMINUM	CLEAR ANODIZED
SOUTHCO PART NUMBER	TYPE OF COMPONENT	MATERIAL	FINISH

	THIRD ANGLE PROJECTION	 CONNECT • CREATE • INNOVATE	
	MILLIMETERS [IN]		
SURFACE AREA	TOLERANCES UNLESS OTHERWISE NOTED	DESCRIPTION NO. B4 PULL (200 SERIES) (WITH METRIC THREADS)	
VOLUME	ALL DIMENSIONS WITHOUT TOLERANCES ARE FOR REFERENCE ONLY.	SIZE A4	SYSTEM NX
PROPRIETARY ITEM <small>EXCEPT FOR USES EXPRESSLY GRANTED IN WRITING, INFORMATION DISCLOSED HEREON IS CONFIDENTIAL AND ALL RIGHTS, PATENT AND OTHERWISE, ARE RESERVED BY SOUTHCO, INC.</small>	PER ASME Y14.5M-1994	DWG NO. J-B4-50-203	
		DRAWN BY JGK	DATE 22JAN1999
		SCALE 1:1	SHEET 1 OF 1