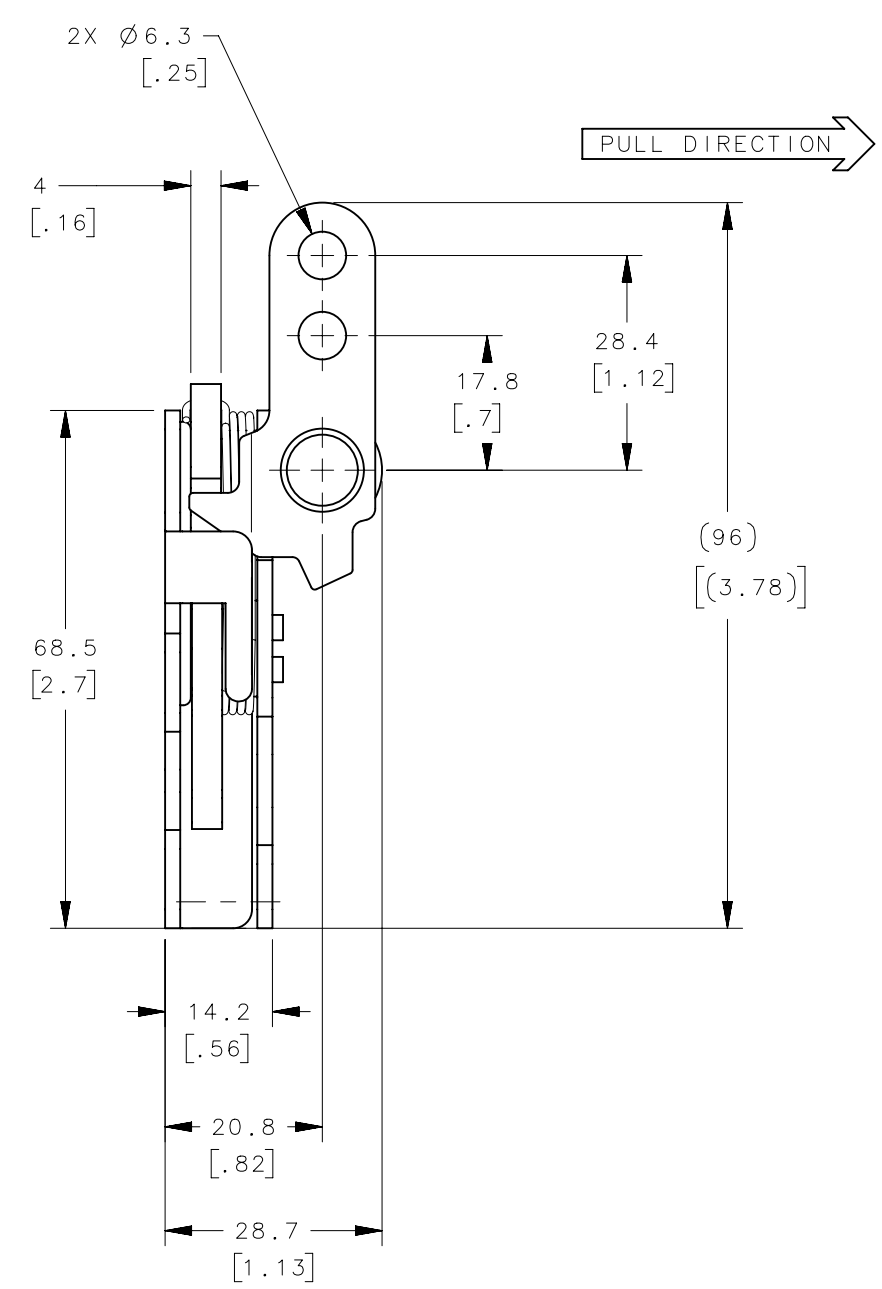
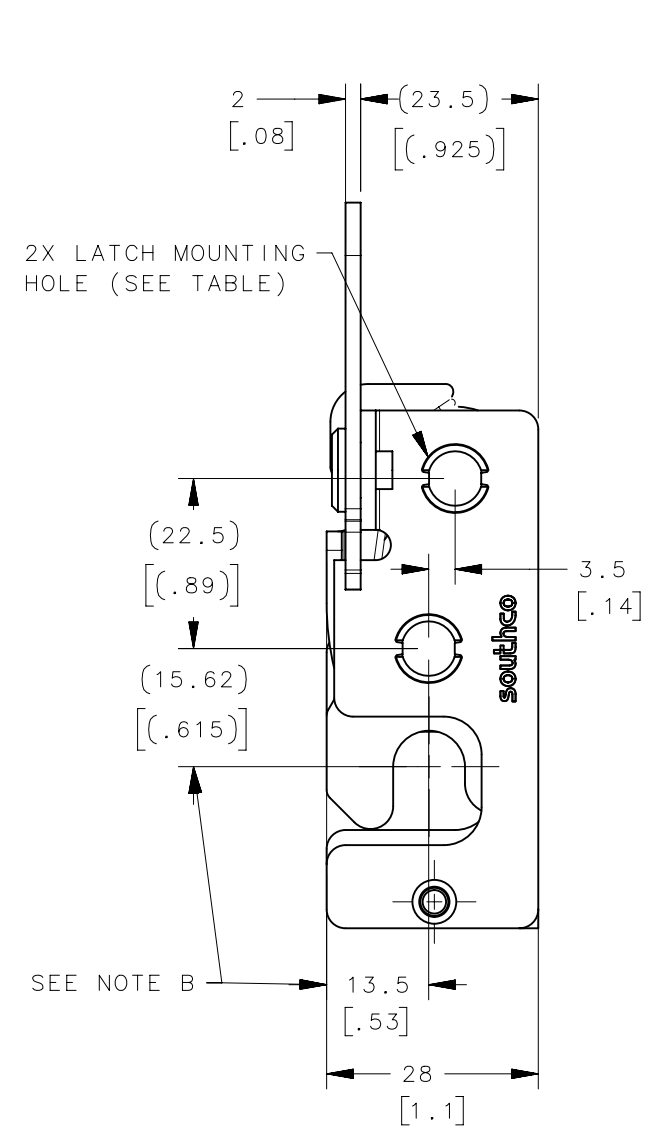
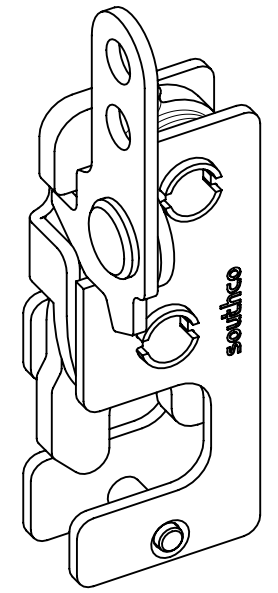
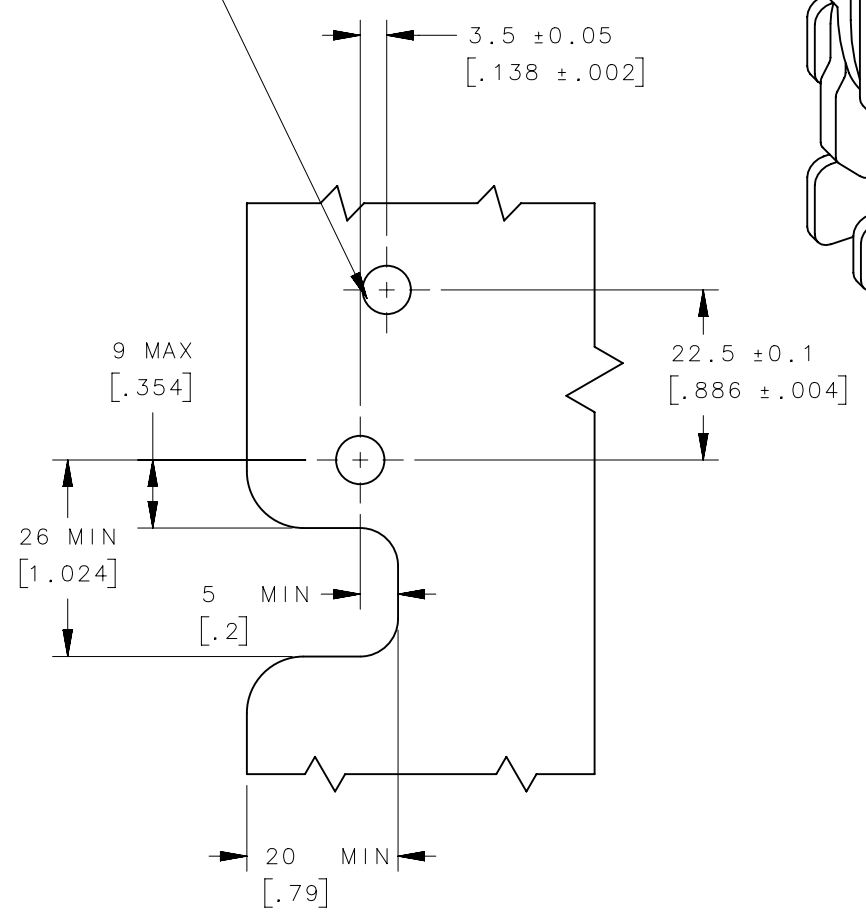
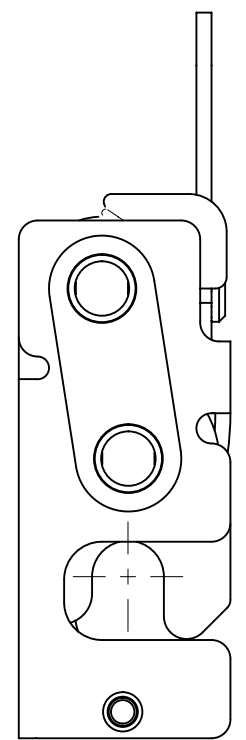


REVISION HISTORY			
REV	DATE	BY	DESCRIPTION
B	27JUL2021	KSH/HPD	PRN: P2021-1536



2X MINIMUM (RECOMMENDED PANEL HOLES (SEE TABLE)



- NOTES:
- A. MATERIAL AND FINISH:
- ALL PARTS STAINLESS STEEL,
 - B. THESE DIMENSIONS REQUIRED FOR MOUNTING STRIKER BOLT.
 - C. Ø6.3 (.25) LEVER HOLES USE OPTIONAL CABLE RETAINER R4-0-43922 SOLD SEPARATELY.

R4-10-30-201-20	Ø 7.2mm THRU	Ø 7.6 [.299]	SEE NOTE A	SEE NOTE A
R4-10-31-201-20	1/4-20 THREAD	Ø 6.8 [.268]		
R4-10-32-201-20	M6 THREAD	Ø 6.4 [.252]		
ASSEMBLY PART NUMBER	LATCH MOUNTING HOLE	MINIMUM RECOMMENDED PANEL HOLE	MATERIAL	FINISH

<small>PROPRIETARY ITEM EXCEPT FOR USES EXPRESSLY GRANTED IN WRITING, INFORMATION DISCLOSED HEREON IS CONFIDENTIAL AND ALL RIGHTS, PATENT AND OTHERWISE, ARE RESERVED BY SOUTHCO, INC.</small>	THIRD ANGLE PROJECTION		 CONNECT • CREATE • INNOVATE	
	MILLIMETERS [IN]			
	TOLERANCES UNLESS OTHERWISE NOTED			
ALL DIMENSIONS WITHOUT TOLERANCES ARE FOR REFERENCE ONLY.	DESCRIPTION	R4 SS TWO STAGE MINI ROTARY LATCH INLINE - RIGHT HAND		
PER ASME Y14.5M-1994	SIZE	SYSTEM	DWG NO.	
	B	NX	J-R4-10-30-201-20	
	DRAWN BY	DATE	SCALE	SHEET
	YSN/ACH	26APR2012	1:1	1 OF 2

6

5

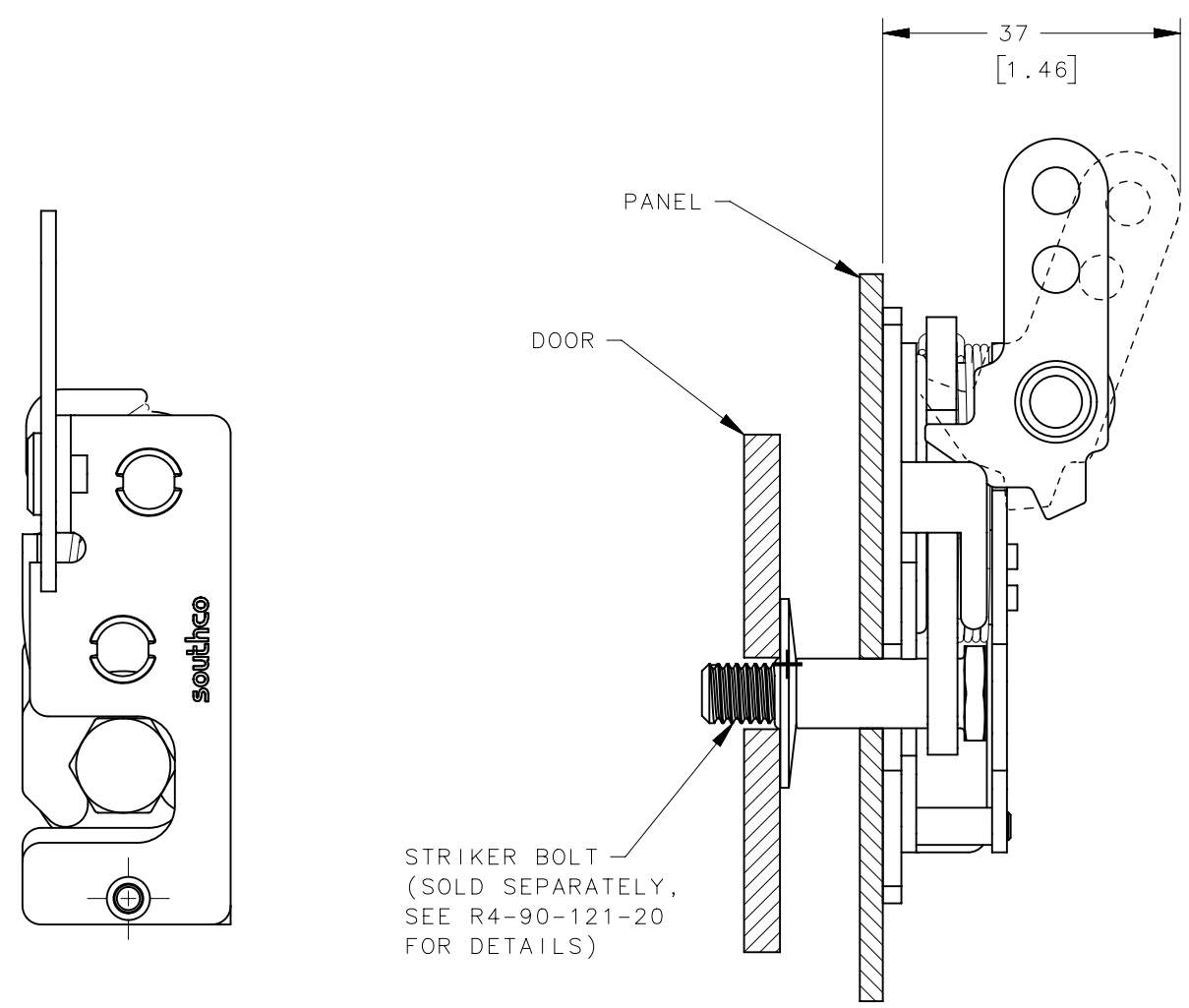
4

3

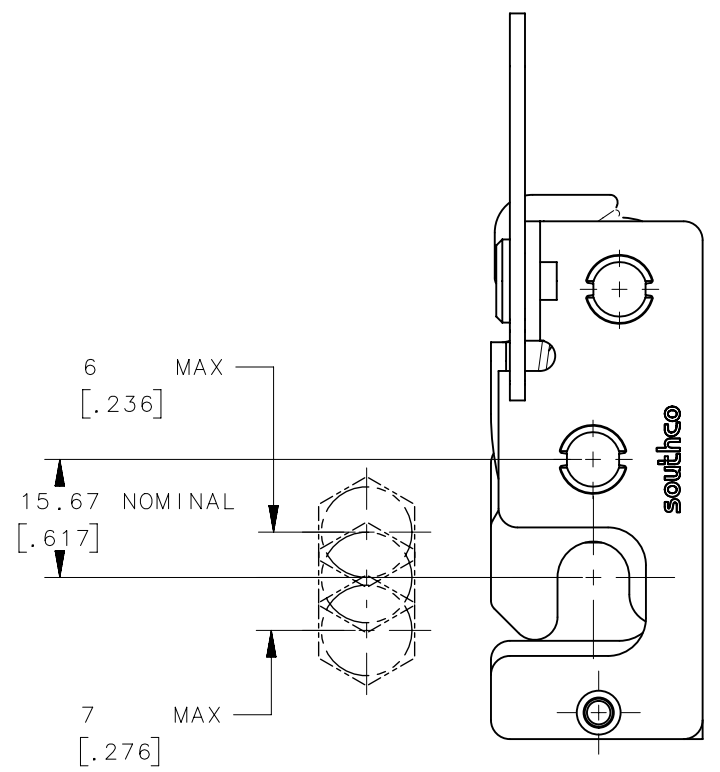
2

1

REVISION HISTORY			
REV	DATE	BY	DESCRIPTION
B	27JUL2021	KSH/HPD	PRN: P2021-1536



PULL DIRECTION →



MISALIGNMENT VIEW
(SEE NOTE B)

NOTES:

- A. THE TOLERANCE BETWEEN THE LATCH AND STRIKER BOLT ASSUMES A NON-RIGID DOOR INSTALLATION THAT WILL ALLOW THE DOOR TO MOVE INTO THE NOMINAL POSITION DURING LATCHING. RIGID DOORS MUST HAVE THE STRIKER INSTALLED PER THE PANEL PREPARATION RECOMMENDATION.
- B. THE MISALIGNMENT VIEW ASSUMES THE LATCH IS CONNECTED TO A PERFECTLY RIGID DOOR AND HINGE; THEREFORE, THERE IS NO DOOR AND/OR HINGE SLACK ASSOCIATED WITH THESE DIMENSIONS. THE MISALIGNMENT VIEW DOES NOT TAKE FLEXING OF THE STRIKER BOLT INTO ACCOUNT.

<small>PROPRIETARY ITEM EXCEPT FOR USES EXPRESSLY GRANTED IN WRITING, INFORMATION DISCLOSED HEREON IS CONFIDENTIAL AND ALL RIGHTS, PATENT AND OTHERWISE, ARE RESERVED BY SOUTHCO, INC.</small>	THIRD ANGLE PROJECTION	 CONNECT • CREATE • INNOVATE			
	MILLIMETERS [IN]				
	TOLERANCES UNLESS OTHERWISE NOTED	DESCRIPTION R4 SS MINI TWO STAGE ROTARY LATCH INLINE - RIGHT HAND			
	ALL DIMENSIONS WITHOUT TOLERANCES ARE FOR REFERENCE ONLY.	<table border="1"> <tr> <td>SIZE B</td> <td>SYSTEM NX</td> <td>DWG NO. J-R4-10-30-201-20</td> </tr> </table>	SIZE B	SYSTEM NX	DWG NO. J-R4-10-30-201-20
SIZE B	SYSTEM NX	DWG NO. J-R4-10-30-201-20			
PER ASME Y14.5M-1994	<table border="1"> <tr> <td>DRAWN BY YSN/ACH</td> <td>DATE 26APR2012</td> <td>SCALE 1:1</td> <td>SHEET 2 OF 2</td> </tr> </table>	DRAWN BY YSN/ACH	DATE 26APR2012	SCALE 1:1	SHEET 2 OF 2
DRAWN BY YSN/ACH	DATE 26APR2012	SCALE 1:1	SHEET 2 OF 2		

6

5

4

3

2

1