

6

5

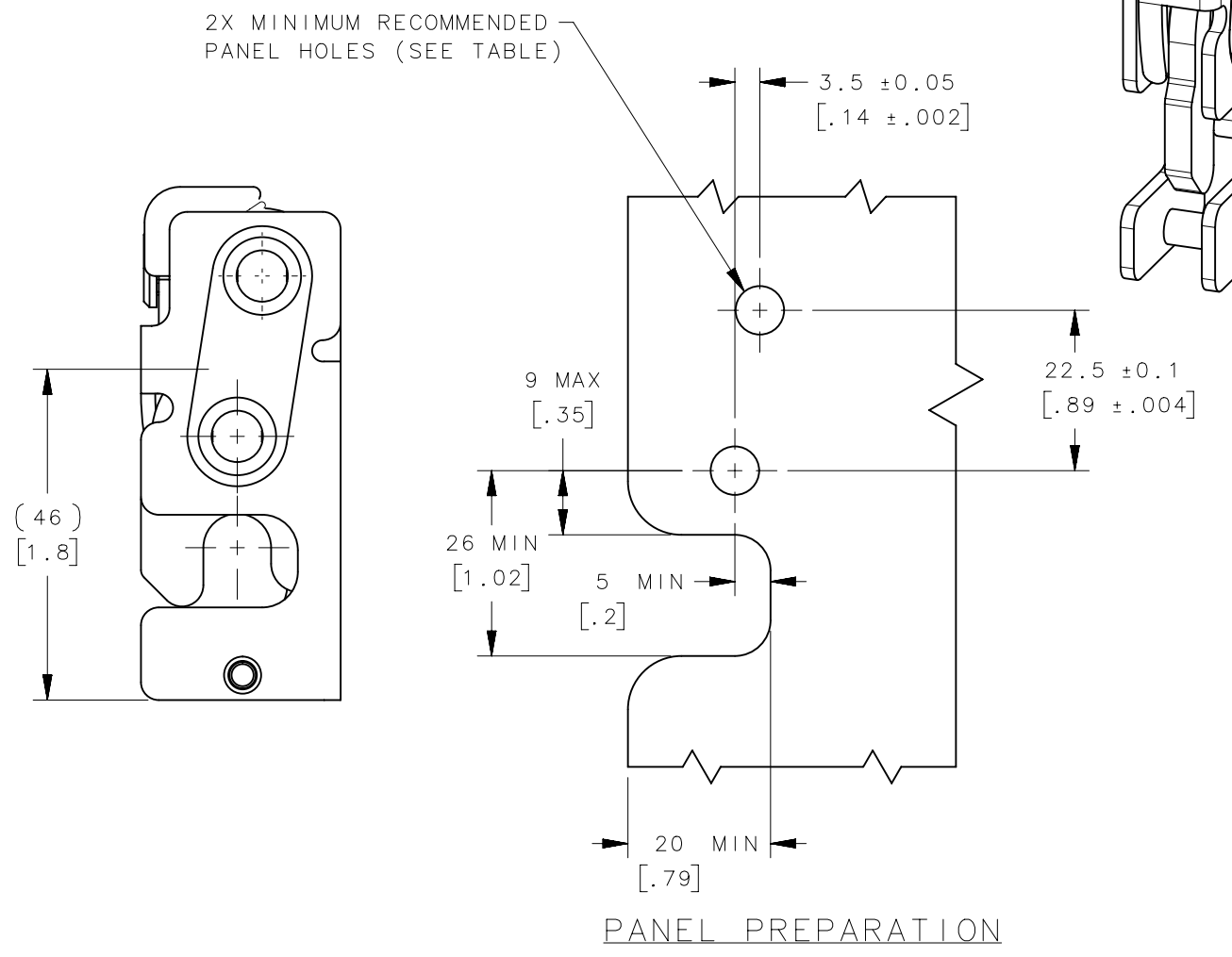
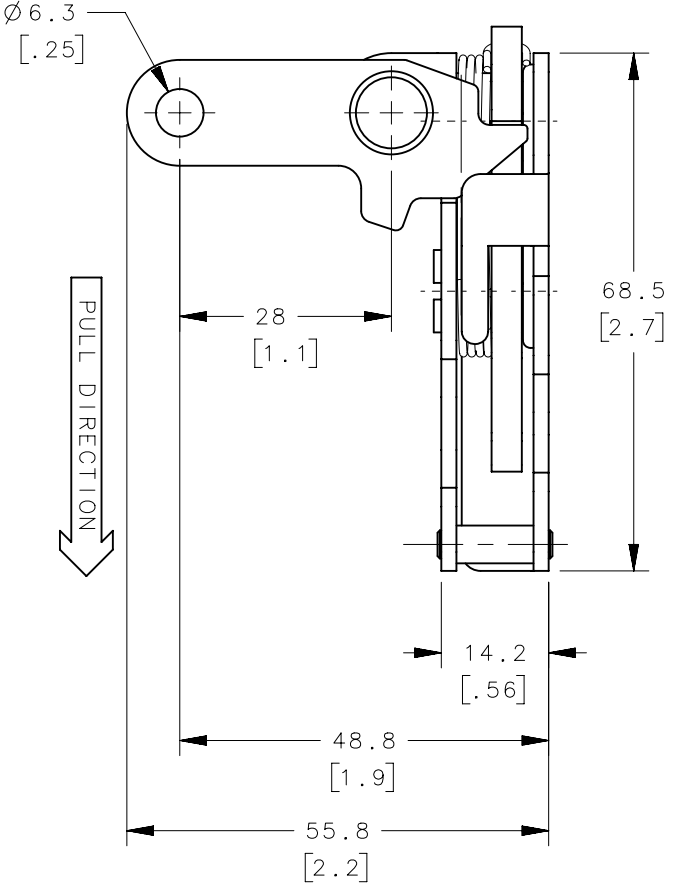
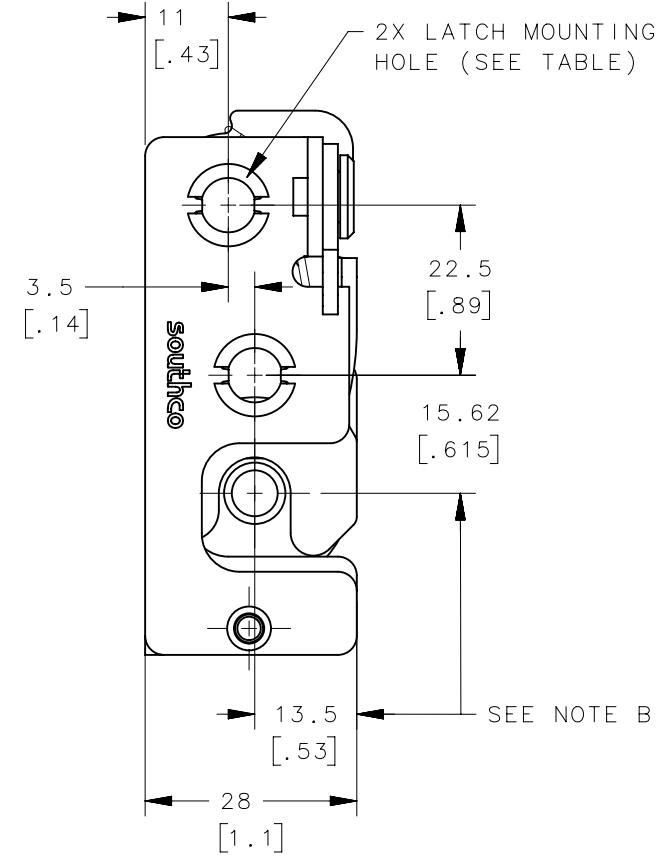
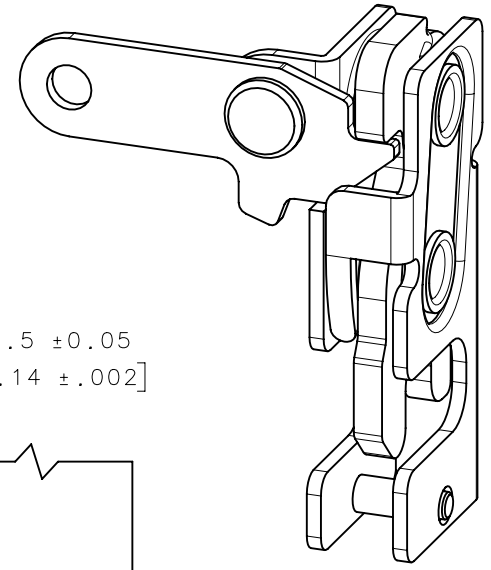
4

3

2

1

REVISION HISTORY			
REV	DATE	BY	DESCRIPTION
B	04FEB2014	ACH/ASM	PRN: P2014-0306



NOTES:

A. MATERIAL AND FINISH:

- HOUSING, LEVER AND INTERNAL COMPONENTS:
MATERIAL - STEEL
-10 ZINC PLATED, BRIGHT CHROMATE
-77 ZINC NICKEL, BRIGHT CHROMATE
- PAWL AND TRIGGER:
MATERIAL - HARDENED STEEL
-10 ZINC PLATED, BRIGHT CHROMATE
-77 ZINC NICKEL, BRIGHT CHROMATE
ZINC PLATE CHROMATE.
- SPRING: STAINLESS STEEL, PASSIVATED

B. THESE DIMENSIONS REQUIRED FOR MOUNTING STRIKER BOLT.

R4-10-40-101-77	Ø 7.2mm THRU	SEE NOTE A	SEE NOTE A	
R4-10-41-101-77	1/4-20 THREAD	SEE NOTE A	SEE NOTE A	
R4-10-42-101-77	M6 THREAD	SEE NOTE A	SEE NOTE A	
R4-10-40-101-10	Ø 7.2mm THRU	SEE NOTE A	SEE NOTE A	
R4-10-41-101-10	1/4-20 THREAD	SEE NOTE A	SEE NOTE A	
R4-10-42-101-10	M6 THREAD	SEE NOTE A	SEE NOTE A	
ASSEMBLY PART NUMBER	LATCH MOUNTING HOLE	MATERIAL	FINISH	GENERAL NOTES
THIRD ANGLE PROJECTION		 CONNECT • CREATE • INNOVATE		
MILLIMETERS [IN]				
SURFACE AREA		DESCRIPTION R4 MINI TWO STAGE ROTARY LATCH PERPINDICULAR - LEFT HAND		
VOLUME		SIZE B	SYSTEM NX	DWG NO. J-R4-10-40-101
PROPRIETARY ITEM EXCEPT FOR USES EXPRESSLY GRANTED IN WRITING, INFORMATION DISCLOSED HEREON IS CONFIDENTIAL AND ALL RIGHTS, PATENT AND OTHERWISE, ARE RESERVED BY SOUTHCO, INC.		DRAWN BY DJK		
PER ASME Y14.5M-1994		DATE 26APR2012	SCALE 1:1	SHEET 1 OF 3

6

5

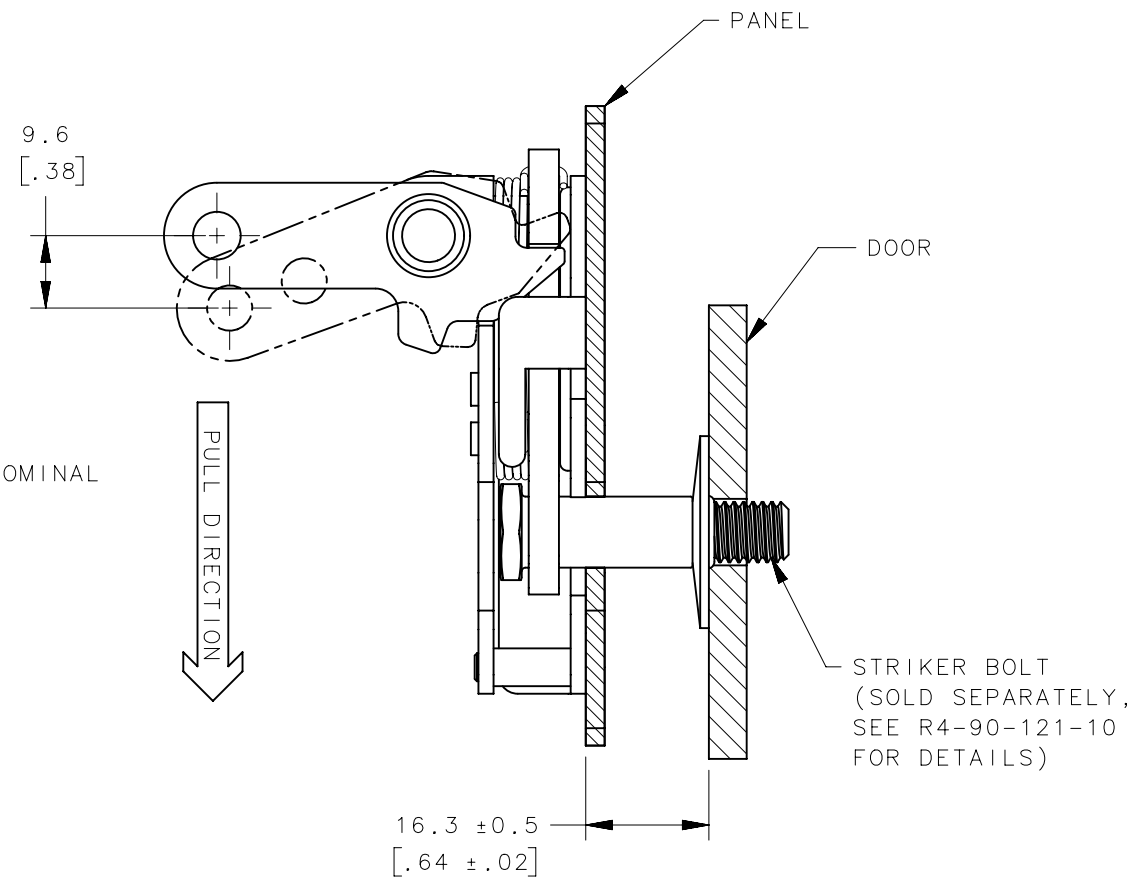
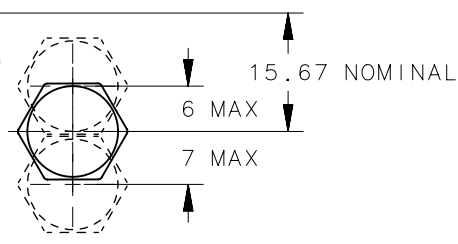
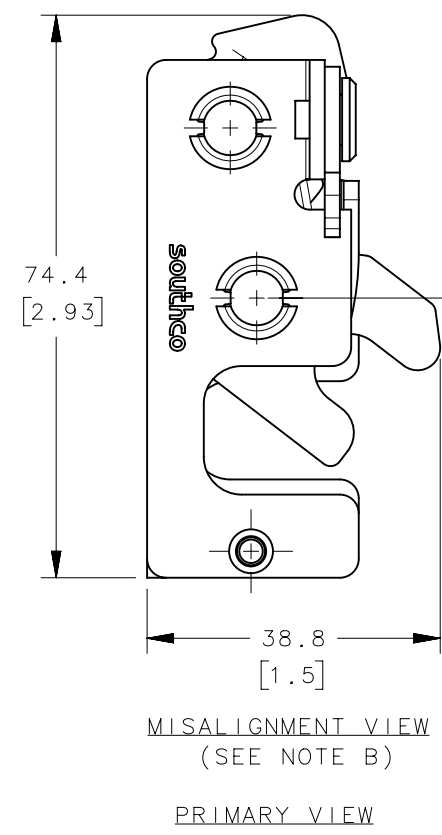
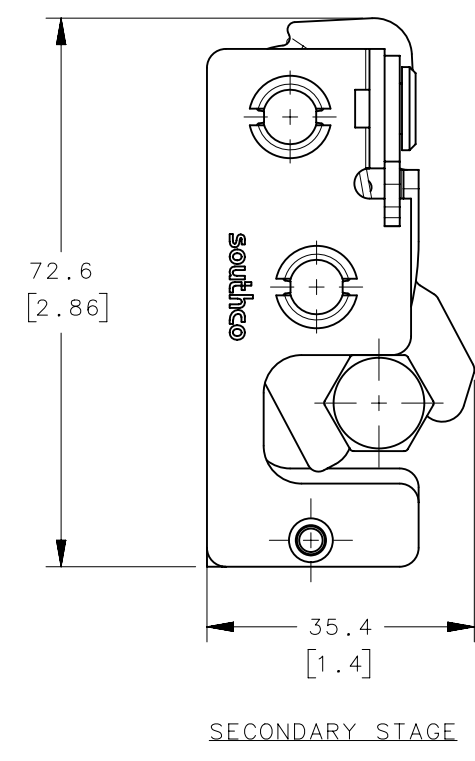
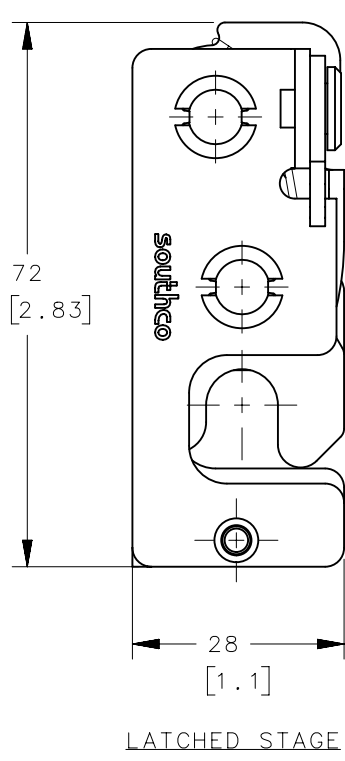
4

3

2

1

REVISION HISTORY			
REV	DATE	BY	DESCRIPTION
B	04FEB2014	ACH/ASM	PRN: P2014-0306



NOTES:

- A. THE TOLERANCE BETWEEN THE LATCH AND STRIKER BOLT ASSUMES A NON-RIGID DOOR INSTALLATION THAT WILL ALLOW THE DOOR TO MOVE INTO THE NOMINAL POSITION DURING LATCHING. RIGID DOORS MUST HAVE THE STRIKER INSTALLED PER THE PANEL PREPARATION RECOMMENDATION.
- B. THE MISALIGNMENT VIEW ASSUMES THE LATCH IS CONNECTED TO A PERFECTLY RIGID DOOR AND HINGE; THEREFORE, THERE IS NO DOOR AND/OR HINGE SLACK ASSOCIATED WITH THESE DIMENSIONS. THE MISALIGNMENT VIEW DOES NOT TAKE FLEXING OF THE STRIKER BOLT INTO ACCOUNT.

ASSEMBLY PART NUMBER	LATCH MOUNTING HOLE	MINIMUM RECOMMENDED PANEL HOLE	GENERAL NOTES
R4-10-40-101-77	Ø 7.2mm THRU	Ø 7.6 [.299]	
R4-10-41-101-77	1/4-20 THREAD	Ø 6.8 [.268]	
R4-10-42-101-77	M6 THREAD	Ø 6.4 [.252]	
R4-10-40-101-10	Ø 7.2mm THRU	Ø 7.6 [.299]	
R4-10-41-101-10	1/4-20 THREAD	Ø 6.8 [.268]	
R4-10-42-101-10	M6 THREAD	Ø 6.4 [.252]	

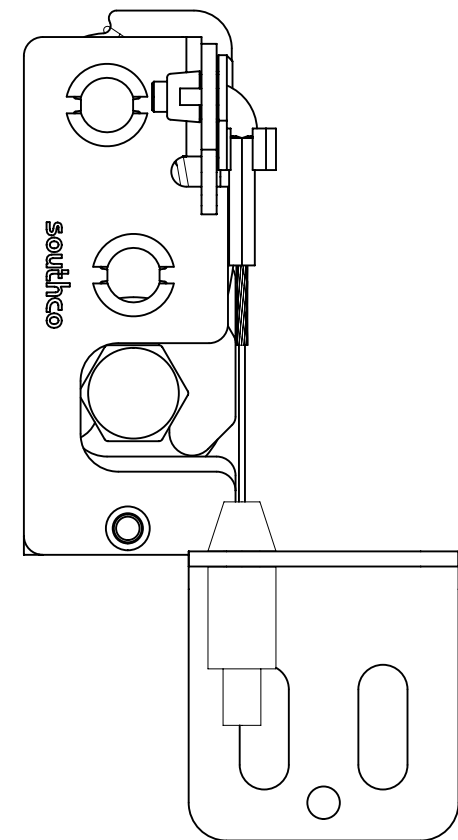
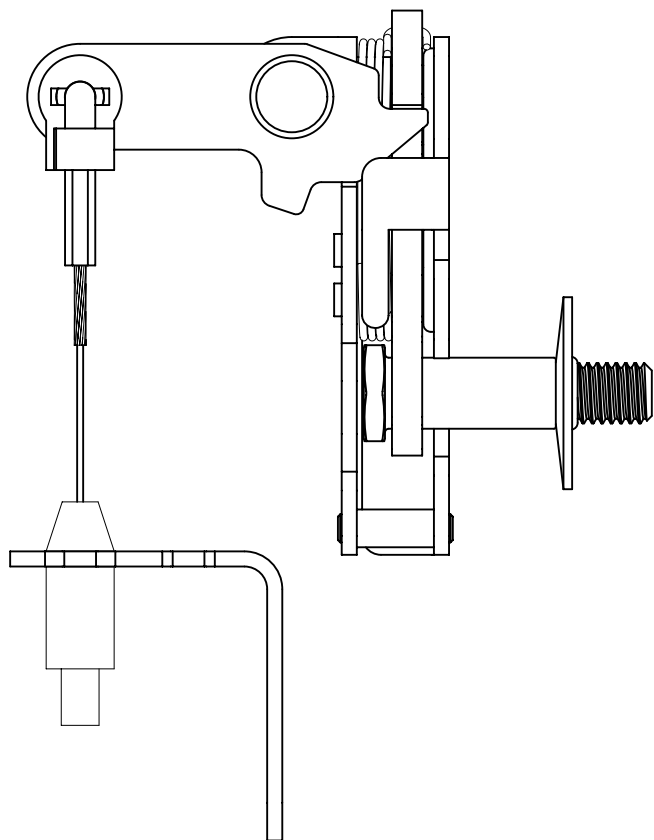
THIRD ANGLE PROJECTION			southco [®] CONNECT • CREATE • INNOVATE	
MILLIMETERS [IN]				
SURFACE AREA	TOLERANCES UNLESS OTHERWISE NOTED ALL DIMENSIONS WITHOUT TOLERANCES ARE FOR REFERENCE ONLY.		DESCRIPTION R4 MINI TWO STAGE ROTARY LATCH PERPENDICULAR - LEFT HAND	
VOLUME			SIZE B	SYSTEM NX
PROPRIETARY ITEM <small>EXCEPT FOR USES EXPRESSLY GRANTED IN WRITING, INFORMATION DISCLOSED HEREON IS CONFIDENTIAL AND ALL RIGHTS, PATENT AND OTHERWISE, ARE RESERVED BY SOUTHCO, INC.</small>	PER ASME Y14.5M-1994	DRAWN BY DJK	DATE 26APR2012	SCALE 1:1
		SHEET 2 OF 3		

REVISION HISTORY			
REV	DATE	BY	DESCRIPTION
B	04FEB2014	ACH/ASM	PRN: P2014-0306

OPTIONAL LINK RETAINER
PART NUMBER R4-0-43922
(SOLD SEPARATELY)

CABLE ASSEMBLY
SEE J-AC-C
(CABLE SHOWN WITH
CABLE FITTING "B" IN
A CABLE ASSEMBLY "13")

OPTIONAL CABLE ASSEMBLY
MOUNTING BRACKET
PART NUMBER AC-900-02-10
(SOLD SEPARATELY)



R4-10-40-101-77	Ø 7.2mm THRU	Ø 7.6 [.299]	
R4-10-41-101-77	1/4-20 THREAD	Ø 6.8 [.268]	
R4-10-42-101-77	M6 THREAD	Ø 6.4 [.252]	
R4-10-40-101-10	Ø 7.2mm THRU	Ø 7.6 [.299]	
R4-10-41-101-10	1/4-20 THREAD	Ø 6.8 [.268]	
R4-10-42-101-10	M6 THREAD	Ø 6.4 [.252]	
ASSEMBLY PART NUMBER	LATCH MOUNTING HOLE	MINIMUM RECOMMENDED PANEL HOLE	GENERAL NOTES

THIRD ANGLE PROJECTION				southco [®] CONNECT • CREATE • INNOVATE	
MILLIMETERS [IN]					
SURFACE AREA		TOLERANCES UNLESS OTHERWISE NOTED		DESCRIPTION R4 MINI TWO STAGE ROTARY LATCH PERPENDICULAR - LEFT HAND	
VOLUME		ALL DIMENSIONS WITHOUT TOLERANCES ARE FOR REFERENCE ONLY.			
PROPRIETARY ITEM		SIZE	SYSTEM	DWG NO.	
EXCEPT FOR USES EXPRESSLY GRANTED IN WRITING, INFORMATION DISCLOSED HEREON IS CONFIDENTIAL AND ALL RIGHTS, PATENT AND OTHERWISE, ARE RESERVED BY SOUTHCO, INC.		B	NX	J-R4-10-40-101	
PER ASME Y14.5M-1994		DRAWN BY	DATE	SCALE	SHEET
		YSN/ACH	26APR2012	1:1	3 OF 3