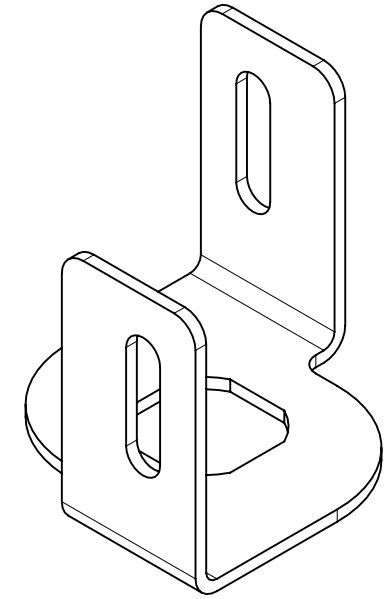
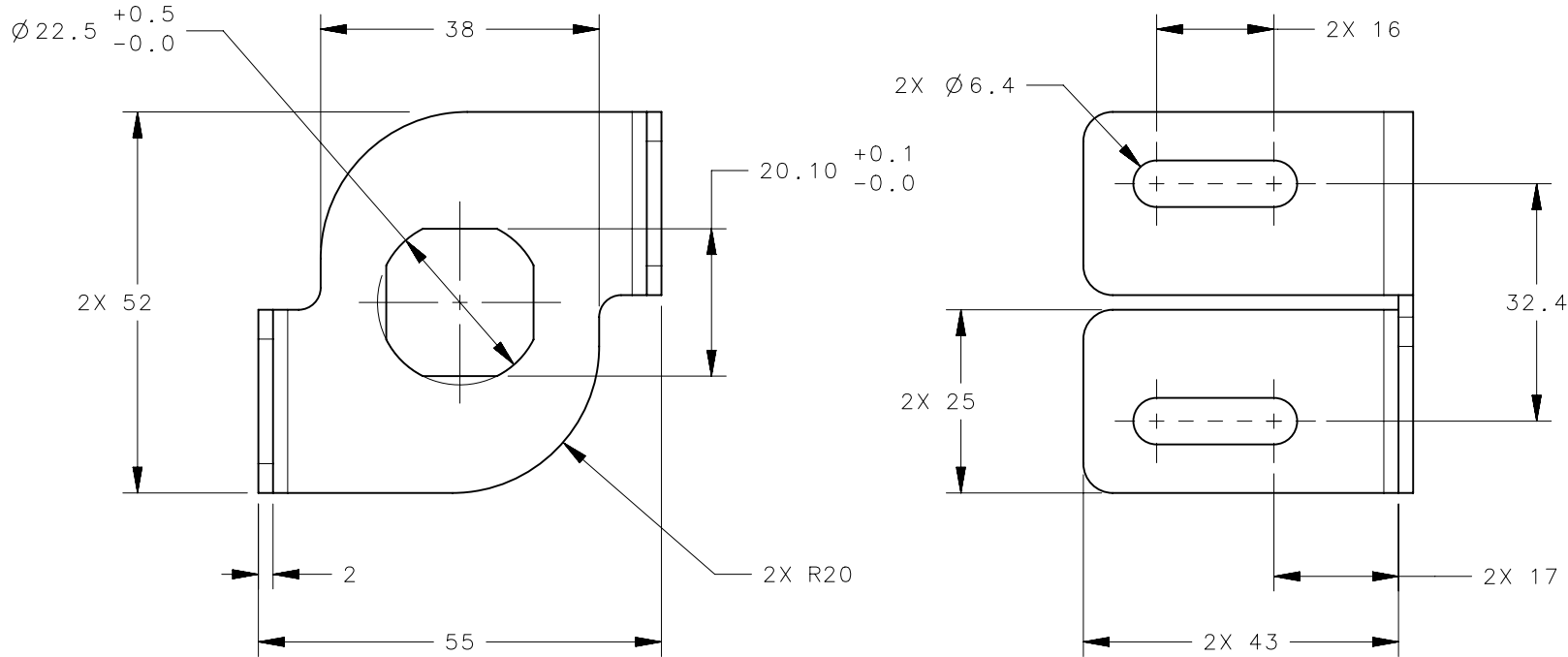


NOTES:

1. RoHS COMPLIANT.
2. COSMETIC SPECIFICATION:
 ALL SURFACES UNLESS OTHERWISE NOTED ARE TO CONFORM TO A CLASS "C"
 DESIGNATION AS DESCRIBED IN SOUTHCO COSMETIC SPECIFICATION:
 S-121-02 FOR ZINC PLATED PARTS

REVISION HISTORY			
REV	DATE	BY	DESCRIPTION
A	18MAY2010	MJS/CLB	PRN: P2010-0487



AC-0-49617-11-R	BRACKET	STEEL	ZINC PLATE, TRIVALENT CHROMATE
SOUTHCO PART NUMBER	TYPE OF COMPONENT	MATERIAL	FINISH

THIRD ANGLE PROJECTION	
MILLIMETERS [IN]	
SURFACE AREA	8401.9mm ²
VOLUME	7347.3mm ³
PROPRIETARY ITEM	
EXCEPT FOR USES EXPRESSLY GRANTED IN WRITING, INFORMATION DISCLOSED HEREON IS CONFIDENTIAL AND ALL RIGHTS, PATENT AND OTHERWISE, ARE RESERVED BY SOUTHCO, INC.	

TOLERANCES UNLESS OTHERWISE NOTED	DESCRIPTION
ALL DIMENSIONS WITHOUT TOLERANCES ARE FOR REFERENCE ONLY.	BRACKET, RIGHT HAND, MECHANICAL OVERRIDE CABLE, E5
PER ASME Y14.5M-1994	

southco [®]			
CONNECT • CREATE • INNOVATE			
SIZE	SYSTEM	DWG NO.	
A4	NX	J-AC-0-49617-11-R	
DRAWN BY	DATE	SCALE	SHEET
MJS/CLB	18MAY2010	1:1	1 OF 1