

**southco**

PROPRIETARY ITEM - EXCEPT FOR USES EXPRESSLY GRANTED IN WRITING INFORMATION DISCLOSED HEREON IS CONFIDENTIAL AND ALL RIGHTS PATENT AND OTHERWISE ARE RESERVED BY SOUTHCO, INC.

No. 93 SLAM-ACTION PUSH-BUTTON LATCH  
CORROSION-RESISTANT WITH 90° PULL TAB

DATE

DRAWN

CHKD

SCALE

DRAWING NUMBER

01APR1991

JAD

1:1

J-93-313

REV	DATE	DRAWN/CHKD	DESCRIPTION	ITEM	PART NUMBER	MATERIAL	FINISH	REMARKS
A	19APR1991	ACZ/	PRN: 93-113	ASSEMBLY	93-313	SEE NOTE A	SEE NOTE A	SEE NOTE B
B	14MAY1991	CRW/	ADDED TOLERANCE TO MOUNTING HOLE	ASSEMBLY	93-313-B	SEE NOTE A	SEE NOTE A	SEE NOTE C
C	04FEB1992	RES/	PRN 93-127; LOCK PLUG WAS ZINC					
D	02JUN1993	JGK/	PRN: 93-106-A; M3 WAS 3.5mm					
E	15APR1994	RDG/	PRN: 93-144					
F	21MAR1995	RDG/	PRN: 93-158					
G	18APR1995	KGS/	PRN: 93-160					
H	23MAY2006	MJS/RLR	PRN: P2006-0726					

**INCHES**

TOLERANCES UNLESS OTHERWISE NOTED

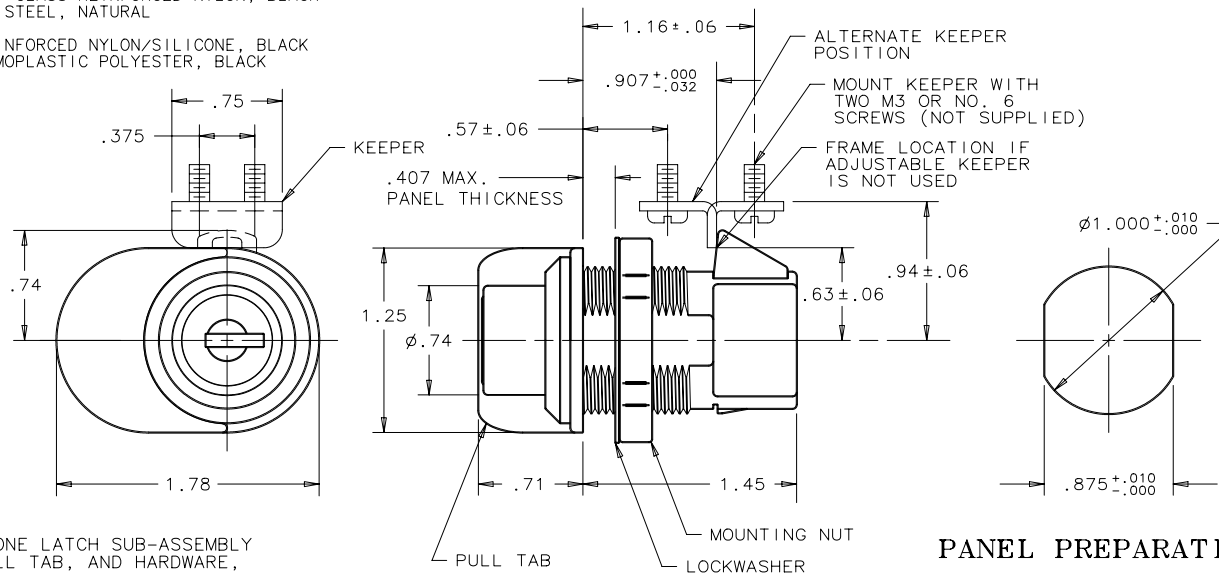
TWO PLACE (.XX) ±.01  
THREE PLACE (.XXX) ±.005  
ANGLES ±1°



## NOTES:

## A. MATERIAL AND FINISH

- LOCK PLUG: GLASS REINFORCED ACETAL, BLACK
- KEEPER, CAM SPRING & LOCKWASHER: STAINLESS STEEL, PASSIVATED
- MOUNTING NUT & HOUSING: GLASS REINFORCED NYLON, BLACK
- PAWL SPRING: STAINLESS STEEL, NATURAL
- PULL TAB: NYLON, BLACK
- INTERNAL CAM: GLASS REINFORCED NYLON/SILICONE, BLACK
- KNOB & KNOB PLUG: THERMOPLASTIC POLYESTER, BLACK
- PAWL: ACETAL, BLACK



B. ASSEMBLY CONSISTS OF ONE LATCH SUB-ASSEMBLY WITH TWO KEYS, ONE PULL TAB, AND HARDWARE, PACKAGED ONE COMPLETE ASSEMBLY PER BAG.

C. SAME AS ABOVE ASSEMBLY EXCEPT LATCH SUB-ASSEMBLY, PULL TAB, AND PACKAGE ARE SHIPPED SEPARATELY.

D. RoHS COMPLIANT.

PULL TAB MAY BE INSTALLED  
180° FROM POSITION SHOWN

**PANEL PREPARATION**