

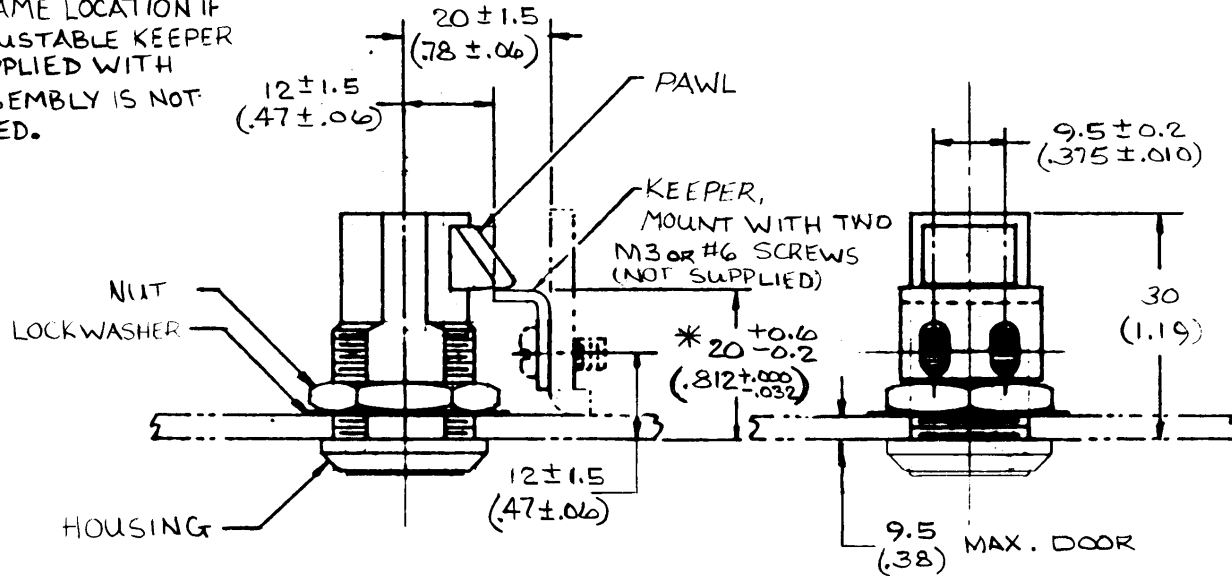


# #93 KEY LATCH ASSEMBLY

DATE	DRAWN	CHKD	SCALE	DRAWING NUMBER
6-1-89	D.W.F.	Y.E.	N.T.S.	J-93-10-201-50

REV. LET.	DATE	BY-CHKD	REVISIONS	ASSY PART NO
A	6-10-93	JGK	PRN: 93-137	93-10-201-50
B	21NOV2017	RKS VK	PRN: P2017-2858	

\* FRAME LOCATION IF ADJUSTABLE KEEPER SUPPLIED WITH ASSEMBLY IS NOT USED.

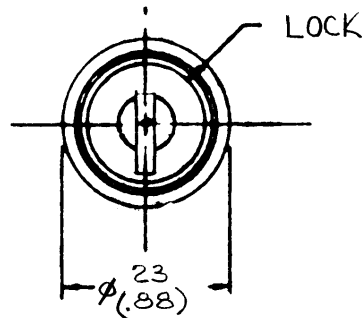
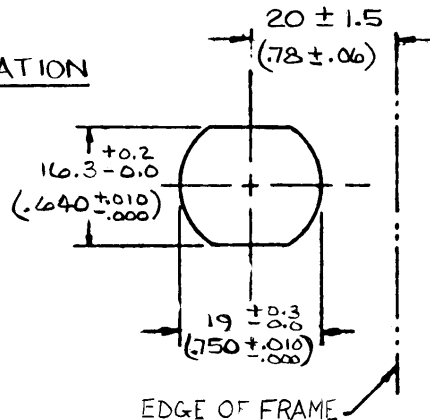


ASSEMBLY PART NO 93-10-201-10 CONSISTS OF ONE LATCH SUB-ASSY, TWO KEYS, ONE NUT, ONE LOCKWASHER, AND ONE KEEPER, PACKED IN A PLASTIC BAG.

HOUSING AND LOCK ARE DIE CAST ZINC, BLACK POLYESTER POWDER COATED.

PAWL IS BLACK THERMOPLASTIC  
 KEEPER ~ STEEL, DACROTIZED™  
 LOCKWASHER: STEEL, WITH ZINC IMMERSION COATING  
 NUT IS DIECAST ZINC, CHEMICAL PROTECTIVE FILM.

## DOOR PREPARATION



KEY TURNS ONE QUARTER TURN IN EITHER DIRECTION TO UNLATCH. KEY IS REMOVABLE IN ENTER (LATCHED) POSITION ONLY.

MAY BE SLAM CLOSED WHEN LOCKED.

MAX. RECOMMENDED NUT TIGHTENING TORQUE 7.9 N.m (70 in.lbf)

MILLIMETER/INCH

MILLIMETER/INCH