

SOUTHCO PERFORMANCE GUIDELINES:
 THE PERFORMANCE GUIDELINES SHOWN ON THIS PAGE ARE SUPPLIED AS A GENERAL GUIDE ONLY. AS CONDITIONS VARY WITH EACH APPLICATION AND METHOD OF INSTALLATION, STRENGTH DATA GIVEN IS FOR FAILURE OF THE PRODUCT OR FOR SUFFICIENT DEFORMATION TO MAKE PRODUCT INOPERABLE. NO SAFETY FACTOR HAS BEEN APPLIED IT IS RECOMMENDED THAT THE USER REQUEST A PRODUCT SAMPLE FOR TESTING TO DETERMINE THE SUITABILITY OF THE PRODUCT FOR THE PURPOSE INTENDED AND USER'S PARTICULAR APPLICATION.

southco

PROPRIETARY ITEM - EXCEPT FOR USES EXPRESSLY GRANTED IN WRITING INFORMATION DISCLOSED HEREON IS CONFIDENTIAL AND ALL RIGHTS PATENT AND OTHERWISE ARE RESERVED BY SOUTHCO, INC.

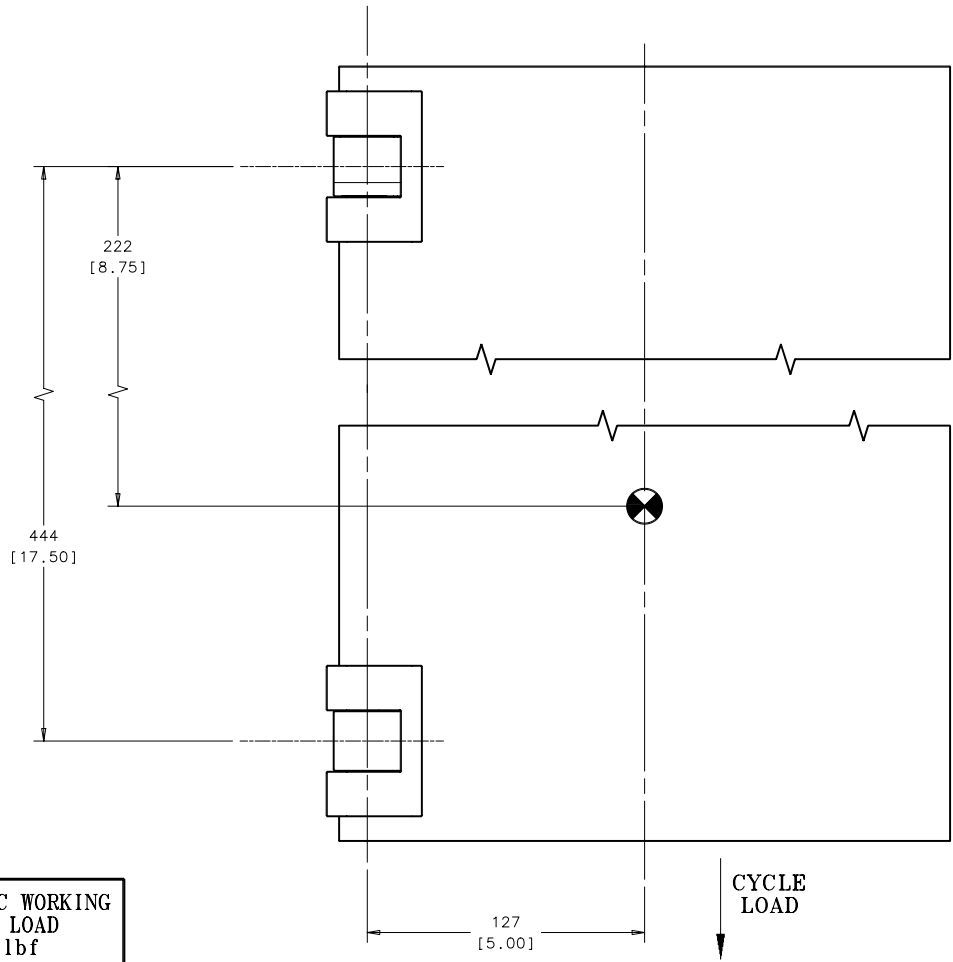
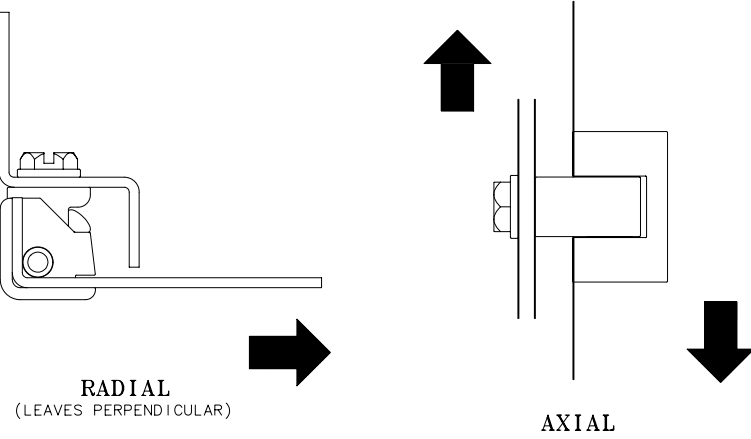
**KH CORNER HINGE - SMALL
 VERSION A AND VERSION B**

DATE	DRAWN	CHKD	SCALE	DRAWING NUMBER
06JUN2005	DLH		1:1	TD-KH-42-T-J

REV	DATE	DRAWN/CHKD	DESCRIPTION
A	11JUL2005	AJH/TLK	*MAX STATIC WORKING RADIAL LOAD* AND *MAX STATIC WORKING AXIAL LOAD* WERE *MAX WORKING RADIAL LOAD* AND *MAX WORKING AXIAL LOAD*

THIRD ANGLE PROJECTION
 A3 PAPER SIZE

MILLIMETER/[INCH]



CYCLE TEST SET-UP
(SCALE .5:1)

NOTES:
 A. CYCLE TEST: TWO HINGES WERE MOUNTED ON A 20lb. CABINET DOOR. SAMPLES WERE ROTATED (cycled) 180°. PRODUCT PASSED 5000 CYCLES WITH NO LOSS OF FUNCTION (STEEL AND PLASTIC PINS WERE USED).

PART NUMBER	CYCLE LIFE @ 89 N/ 20 lbf (STEEL AND PLASTIC PINS USED)	MAX STATIC WORKING RADIAL LOAD @ 90° N / lbf (STEEL AND PLASTIC PINS USED)	MAX STATIC WORKING AXIAL LOAD N / lbf (STEEL AND PLASTIC PINS USED)
KH-42-T1-38	5,000 CYCLES	1112 N / 250 lbf	1112 N / 250 lbf
KH-42-T1-50			
KH-42-T2-38			
KH-42-T2-50			