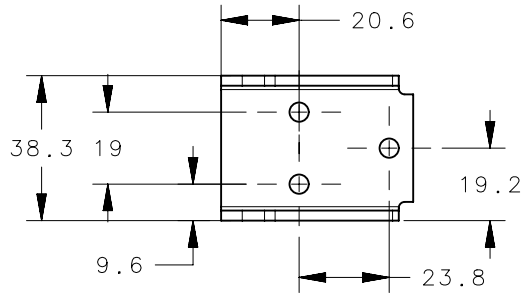
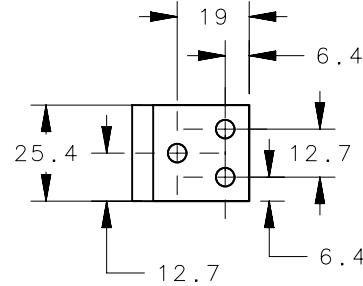


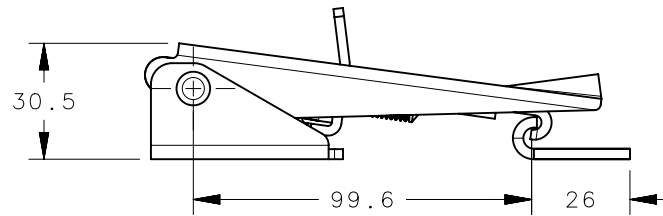
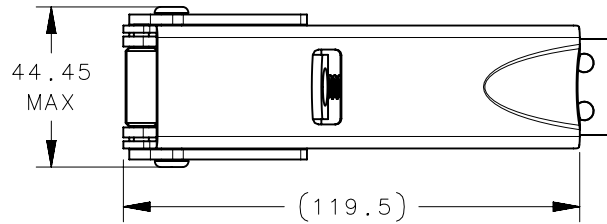
REVISION HISTORY			
REV	DATE	BY	DESCRIPTION
C	26DEC2017	NSB/DMS	PRN: P2017-3148



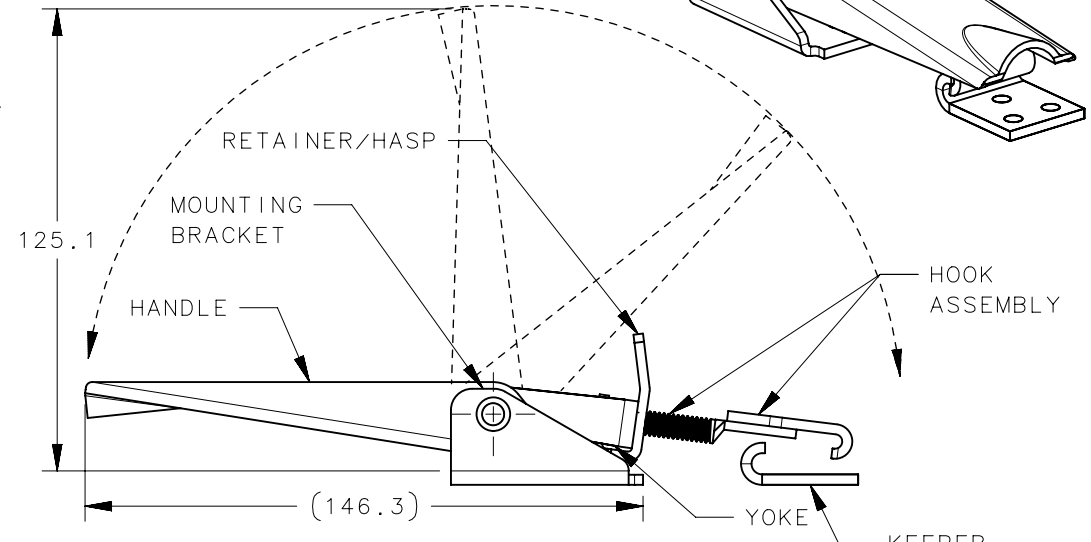
MOUNTING BRACKET



KEEPER



LATCHED POSITION



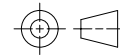
UNLATCHED POSITION

10	-	1	SLOTTED SPRING PIN	302 STAINLESS	PASSIVATE
9	-	1	SQUARE NUT	18-8 STAINLESS	PASSIVATE
8	-	1	RETAINER/HASP	304 CRES	PASSIVATE
7	-	1	HOOK ASSEMBLY	SEE NOTE 3	PASSIVATE
6	-	1	MOUNTING BRACKET	304 CRES	PASSIVATE
5	-	2	RIVET	303 CRES	PASSIVATE
4	-	1	PIVOT PIN	303 CRES	PASSIVATE
3	-	1	YOKE	304 CRES	PASSIVATE
2	-	1	KEEPER	304 CRES	PASSIVATE
1	-	1	HANDLE	304 CRES	PASSIVATE
-	91-832-52	-	LATCH ASSEMBLY	-	-
NO.	PART NUMBER	QTY.	TYPE OF COMPONENT	MATERIAL	FINISH

NOTES:

1. MAXIMUM LOAD = 1000 LBS.
2. THE LATCH HANDLE SHOULD ROTATE WITHOUT BINDING AFTER ASSEMBLY INSTALLATION.
3. MATERIAL OF HOOK ASSEMBLY:
HOOK - 304 CRES
WELD SCREW - 18-8 STAINLESS.

THIRD ANGLE
PROJECTION



MILLIMETERS [IN]

TOLERANCES UNLESS OTHERWISE NOTED

ALL DIMENSIONS WITHOUT
TOLERANCES ARE FOR
REFERENCE ONLY.

PER ASME Y14.5M-1994

southco[®]

CONNECT • CREATE • INNOVATE

DESCRIPTION
ADJUSTABLE TENSION LATCH

SIZE A4	SYSTEM NX	DWG NO. J-91-832-52
------------	--------------	------------------------

DRAWN BY ACH/CW	DATE 27JUN2008	SCALE 1:2	SHEET 1 OF 1
--------------------	-------------------	--------------	-----------------

PROPRIETARY ITEM
EXCEPT FOR USES EXPRESSLY GRANTED
IN WRITING, INFORMATION DISCLOSED
HEREON IS CONFIDENTIAL AND ALL
RIGHTS, PATENT AND OTHERWISE,
ARE RESERVED BY SOUTHCO, INC.