

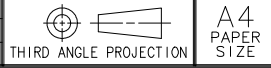


PROPRIETARY ITEM - EXCEPT FOR USES EXPRESSLY GRANTED IN WRITING INFORMATION DISCLOSED HEREON IS CONFIDENTIAL AND ALL RIGHTS PATENT AND OTHERWISE ARE RESERVED BY SOUTHCO, INC.

MULTIPOINT COMPRESSION SYSTEM

| DATE | DRAWN | CHKD | SCALE | DRAWING NUMBER |
|--------|-------|------|-------|----------------|
| 3AUG01 | GDM | MAC | NTS | TD-F2-01-J |

| REV | DATE | DRAWN/CHKD | DESCRIPTION |
|-----|-----------|------------|-----------------------|
| A | 20AUG01 | GDM | SEE TEST K2.a & K2.c. |
| B | 09APR2002 | GDM | UPDATE FORMAT |



SOUTHCO PERFORMANCE GUIDELINES
 THE PERFORMANCE GUIDELINES SHOWN ON THIS PAGE ARE SUPPLIED AS A GENERAL GUIDE ONLY, AS CONDITIONS VARY WITH EACH APPLICATION AND METHOD OF INSTALLATION. STRENGTH DATA GIVEN IS FOR FAILURE OF THE PRODUCT OR FOR SUFFICIENT DEFORMATION TO MAKE PRODUCT INOPERABLE. NO SAFETY FACTOR HAS BEEN APPLIED IT IS RECOMMENDED THAT THE USER REQUEST A PRODUCT SAMPLE FOR TESTING TO DETERMINE THE SUITABILITY OF THE PRODUCT FOR THE PURPOSE INTENDED AND USER'S PARTICULAR APPLICATION.

ASSEMBLY PART NUMBERS:

- F2-20-1X ACTUATOR ASSEMBLY
- F2-10-XXX-X ROD ASSEMBLY
- F2-10-XXX-XX ROD ASSEMBLY
- F2-10-XXX-XXX ROD ASSEMBLY
- F2-30-XX KEEPER

SYSTEM

MAXIMUM WORKING LOAD: MAXIMUM LOAD PER LATCH POINT 100 N NOT TO EXCEED 500 N PER SYSTEM. TEST: S1.c

CYCLE LIFE: FOUR LATCH POINT SYSTEMS WITH A 100 N LOAD APPLIED AT EACH LATCH POINT COMPLETED 10,000 CYCLES. THE AVERAGE PULL UP LOSS WAS 0.69 mm. TEST: S1.c

SALT SPRAY EXPOSURE 24 HOURS PER UL50; REF ASTM B117. TEST: S2

MOUNTING NUT INSTALLATION TORQUE: ACTUATOR AND LATCH POINT 3.0 N•m - 4.0 N•m.

ACTUATOR

HANDLE MAXIMUM LOAD: BEYOND FULL OPEN POSITION - 370 N TEST: A2.c

HANDLE MAXIMUM SIDE LOAD: HANDLE IN FULL OPEN POSITION SIDE LOAD- 160 N TEST: A3

LOCK PLUG: RECOMMENDED MAXIMUM TORQUE ON LOCKPLUG - 1.4 N•m TEST: K2.c

RECOMMENDED MAXIMUM TENSILE ON HANDLE IN LOCKED POSITION - 100 N. TEST: K2.a

ROD ASSEMBLY AND KEEPER

PAWL LOAD: ULTIMATE TENSILE PER LATCH POINT- 390 N. TEST: R2.a

OPERATING TEMPERATURE RANGE: -5°C TO 40°C. TEST: A1.a, A1.c, R1.a & R1.c

ULTIMATE LOAD - THE MINIMUM LOAD THAT CAUSES FAILURE OR EXCESSIVE DEFORMATION WHICH RENDERS THE PRODUCT INOPERABLE.

MAXIMUM WORKING LOAD - THE MAXIMUM LOAD AT WHICH THE PRODUCT CONTINUES TO FUNCTION PROPERLY.

