

6

5

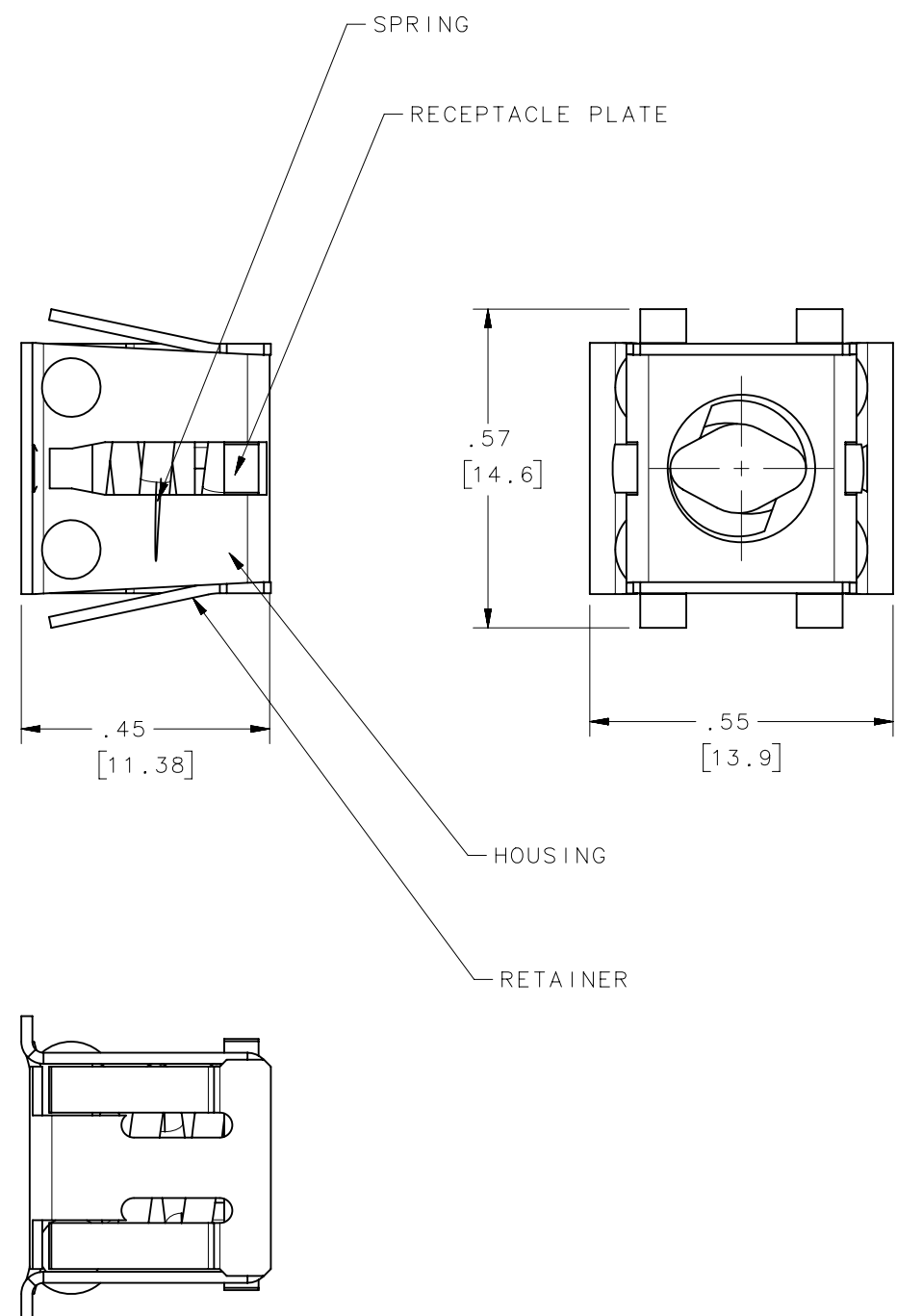
4

3

2

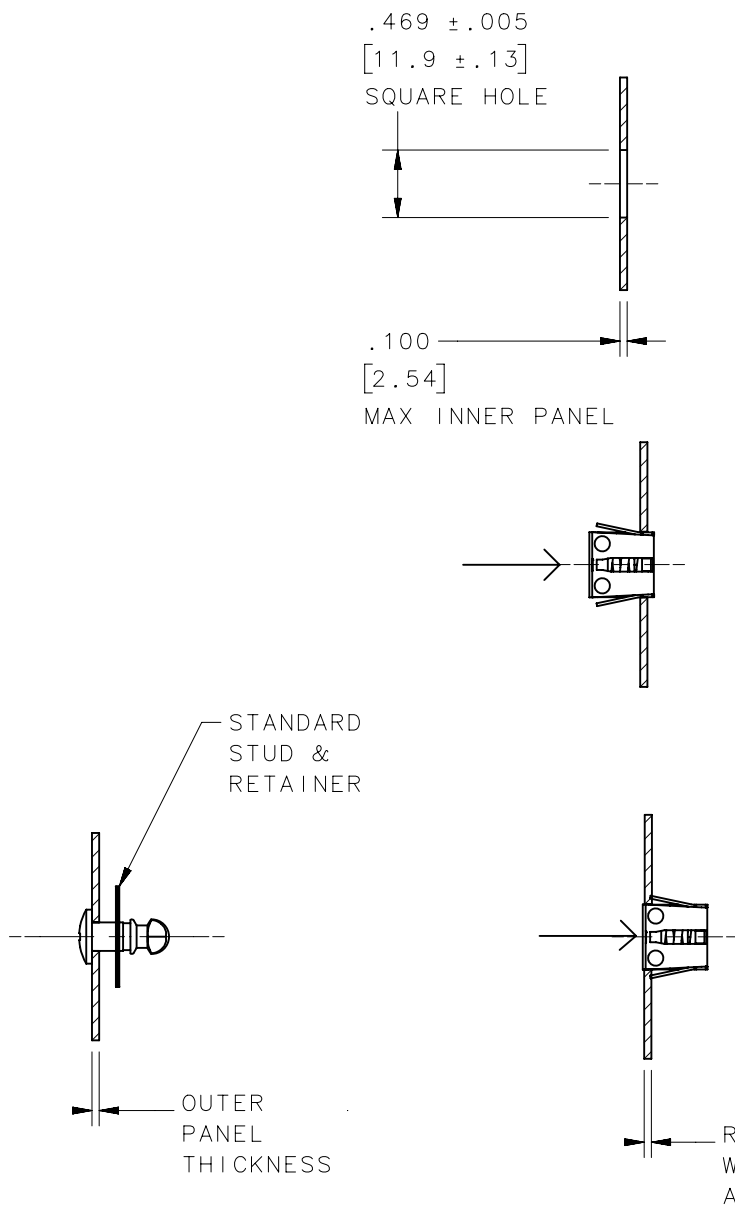
1

RECEPTACLE ASSEMBLY
PART NUMBER: 82-35-309-56



SCALE 3:1

INSTALLATION INSTRUCTIONS



1. PREPARE A SQUARE HOLE IN INNER PANEL.

2. PLACE RECEPTACLE ASSEMBLY INTO HOLE; SEATING FLANGES AGAINST OUTER SURFACE.

3. PUSH IN ON CENTER PORTION BETWEEN FLANGES UNTIL ALL FOUR SPRING LEGS SNAP OUT BEHIND PANEL.

TO SELECT THE PROPER GRIP STUD, ADD A CONSTANT OF .200 [5.08] TO THE OUTER PANEL THICKNESS ONLY.

RECEPTACLE FLANGES WILL SPACE PANELS APART .020 [0.51]

SCALE .75:1

ASSEMBLY		
HOUSING	STAINLESS STEEL	NATURAL
RECEPTACLE PLATE	CASE HARDENED STEEL	ZINC PLATE, CHROMATE PLUS SEALER
RETAINER	STAINLESS STEEL	NATURAL
SPRING	STAINLESS STEEL	PASSIVATED
TYPE OF COMPONENT	MATERIAL	FINISH

THIRD ANGLE PROJECTION 	southco [®] CONNECT • CREATE • INNOVATE			
			DESCRIPTION No. 82 SNAP-IN RECEPTACLE	
	ALL DIMENSIONS WITHOUT TOLERANCES ARE FOR REFERENCE ONLY.	SIZE B	SYSTEM NX	DWG NO. J-82-35-309-56
	PER ASME Y14.5M-1994	DRAWN BY ACH/MJS	DATE 23OCT2008	SCALE NTS

6

5

4

3

2

1