

southco

PROPRIETARY ITEM - EXCEPT FOR USES EXPRESSLY GRANTED IN WRITING INFORMATION DISCLOSED HEREON IS CONFIDENTIAL AND ALL RIGHTS PATENT AND OTHERWISE ARE RESERVED BY SOUTHCO, INC.

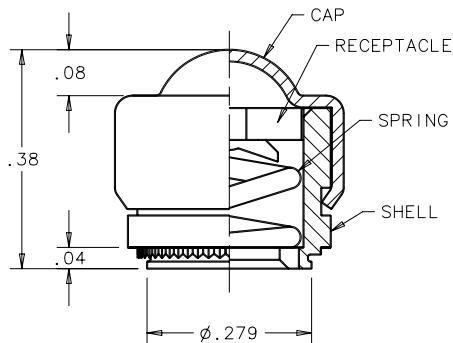
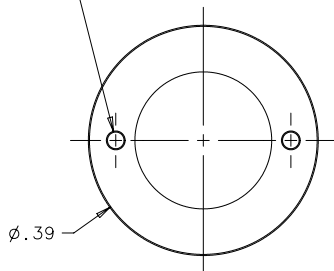
SOUTHCO NO. 81 SEALED SINGLE HOLE RECEPTACLE

DATE	DRAWN	CHKD	SCALE	DRAWING NUMBER
15SEP83	RHB		4:1	J-81-35-311-55

REV	DATE	DRAWN/CHKD	DESCRIPTION	ITEM	PART NUMBER	MATERIAL	FINISH	INCHES
I	28JUL98	AJH	PRN: 81-177 (REDRAWN ON CAD)	ASSEMBLY	81-35-311-55	-	-	ALL DIMENSIONS WITHOUT TOLERANCES ARE FOR REFERENCE ONLY.
J	02NOV98	AJH	PRN: 81-177C	RECEPTACLE	-	CASE HARDENED STEEL	ZINC PLATED, CHROMATE PLUS SEALER	
K	11AUG2004	MDY/RLR	PRN: P2004-0902	SHELL	-	CASE HARDENED STEEL	ZINC PLATED, CHROMATE PLUS SEALER	
L	12APR2005	BRP/RLR	PRN: P2005-0589	SPRING	-	STAINLESS STEEL	ZINC FLAKE COATING	
				CAP	-	STAINLESS STEEL	NATURAL	

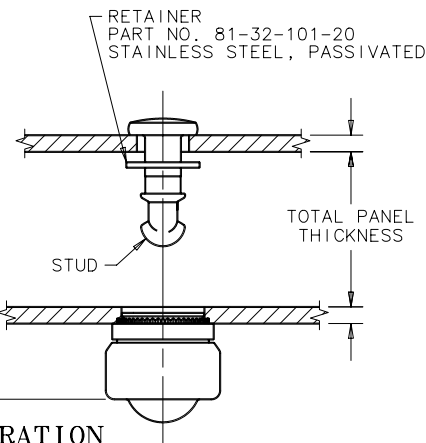
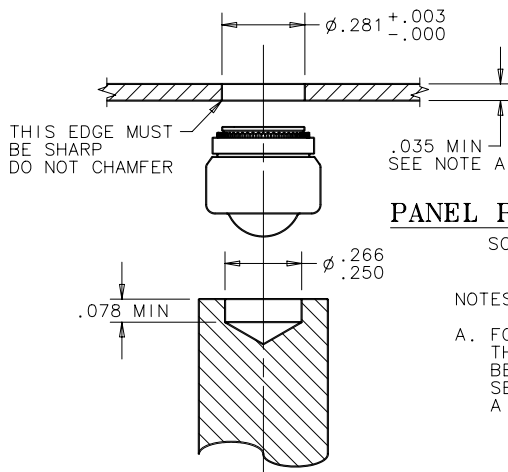
THIRD ANGLE PROJECTION A PAPER SIZE

2 ORIENTATION DIMPLES.
WING OR SLOT OF STUD WILL
BE IN LINE WITH THESE DIMPLES
WHEN FASTENER IS LOCKED.



INSTALLATION INSTRUCTIONS:

1. DRILL OR PUNCH $\phi .281$ HOLE IN INNER PANEL.
2. PRESS RECEPTACLE INTO HOLE UNTIL THE SHOULDER ON THE RECEPTACLE BOTTOMS OUT ON THE PANELS SURFACE.
USE TOOL WITH A CLEARANCE HOLE AS SHOWN.
SOUTHCO TOOL PART NUMBER 54-0-5466-11 MAY BE USED.
3. TO SELECT THE PROPER GRIP STUD, USE TOTAL OF INNER AND OUTER PANEL THICKNESS, PLUS ANY SPACE BETWEEN THE TWO CREATED BY GASKETS, FLANGES, ETC.



PANEL PREPARATION

SCALE 2:1

NOTES

- A. FOR INNER PANELS LESS THAN .050 THICK, THE RETAINER WILL CREATE A SLIGHT SPACE BETWEEN THE PANELS. FOR PROPER STUD SELECTION IN THESE CASES, SUBSTITUTE A CONSTANT OF .050 FOR YOUR OUTER PANEL.