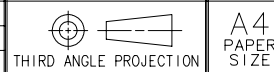
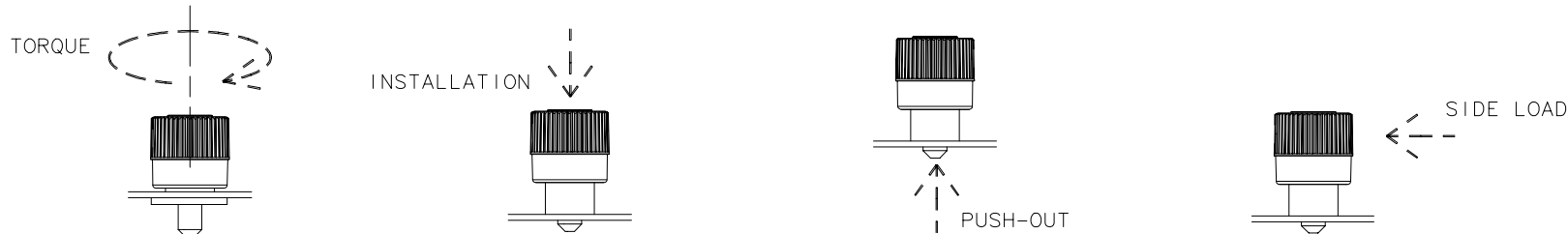


REV	DATE	DRAWN/CHKD	DESCRIPTION															



SOUTHCO PERFORMANCE GUIDELINES
 THE PERFORMANCE GUIDELINES SHOWN ON THIS PAGE ARE SUPPLIED AS A GENERAL GUIDE ONLY, AS CONDITIONS VARY WITH EACH APPLICATION AND METHOD OF INSTALLATION. STRENGTH DATA GIVEN IS FOR FAILURE OF THE PRODUCT OR FOR SUFFICIENT DEFORMATION TO MAKE PRODUCT INOPERABLE. NO SAFETY FACTOR HAS BEEN APPLIED IT IS RECOMMENDED THAT THE USER REQUEST A PRODUCT SAMPLE FOR TESTING TO DETERMINE THE SUITABILITY OF THE PRODUCT FOR THE PURPOSE INTENDED AND USER'S PARTICULAR APPLICATION.



4C PRESS-IN CAPTIVE SCREW																
ASSEMBLY PART NUMBER	SCREW THREAD SIZE	RECOMMENDED TIGHTENING TORQUE			AVERAGE TORQUE TO FAILURE			AVERAGE INSTALLATION FORCE			AVERAGE PUSH-OUT FORCE			AVERAGE SIDE LOAD FORCE		
		Ncm	lbf-in	NOTE	Ncm	lbf-in	NOTE	N	lbf	NOTE	N	lbf	NOTE	N	lbf	NOTE
4C-P□-M3-□P0-K□□□	M3x0.5	60	5.3	(4)	150	13.3	(5)	5500	1236	(1)	542	122	(1)	253	57	(1)
4C-T□-M3-□P0-K□□□								11000	2473	(2)(3)	1234	277	(2)	495	110	(2)
											1334	300	(3)	460	103	(3)

- 1.ASSEMBLIES WERE INSTALLED AND TESTED IN 1.20 mm (.047 in) THICK 5052-H32 ALUMINUM PANELS.
- 2.ASSEMBLIES WERE INSTALLED AND TESTED IN 2.15 mm (.085 in) THICK ASTM A109 TEMPER 5 STEEL PANELS (HRB 55 MAX).
- 3.ASSEMBLIES WERE INSTALLED AND TESTED IN 1.56 mm (.061 in) THICK ASTM A109 TEMPER 2 STEEL PANELS (HRB 70-85).
- 4.REFERENCE - ASSEMBLY ENGINEERING MASTERS CATALOG: VOL. 10, 1971 © HITCHCOCK PUBLISHING CO.
- 5.FAILURE OCCURRED IN THE BREAKAGE OF SCREW SHANK.
- 6.MINIMUM KNOB RETENTION ON SCREW: TORQUE - 23.6 Ncm (2.1 lbf-in), AXIAL FORCE - 270 N (60 lbf)