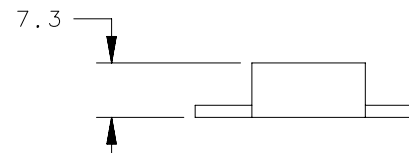
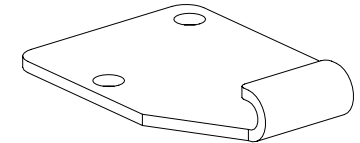
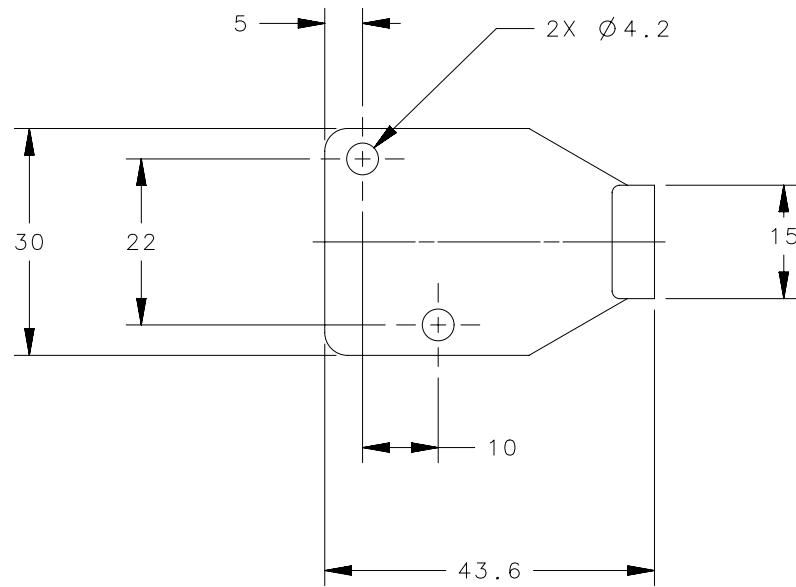


REVISION HISTORY			
REV	DATE	BY	DESCRIPTION
B	19NOV2013	JAJ/YGC	PRN: P2013-2287



TL-17-205-52	STRIKE	300 STAINLESS STEEL	NATURAL
TL-17-205-24	STRIKE	316 STAINLESS STEEL	ELECTROPOLISH
TL-17-205-07	STRIKE	1010 STEEL	ZINC PLATE, BRIGHT CHROMATE
SOUTHCO PART NUMBER	TYPE OF COMPONENT	MATERIAL	FINISH

THIRD ANGLE PROJECTION		 CONNECT • CREATE • INNOVATE	
MILLIMETERS [IN]			
TOLERANCES UNLESS OTHERWISE NOTED		DESCRIPTION	
ALL DIMENSIONS WITHOUT TOLERANCES ARE FOR REFERENCE ONLY.		STRIKER	
PROPRIETARY ITEM EXCEPT FOR USES EXPRESSLY GRANTED IN WRITING, INFORMATION DISCLOSED HEREON IS CONFIDENTIAL AND ALL RIGHTS, PATENT AND OTHERWISE, ARE RESERVED BY SOUTHCO, INC.	PER ASME Y14.5M-1994	SIZE A4	SYSTEM NX
		DWG NO. J-TL-17-205	
		DRAWN BY ACH/CW	DATE 06AUG2008
		SCALE 1:1	SHEET 1 OF 1