

**southco**

PROPRIETARY ITEM - EXCEPT FOR USES EXPRESSLY GRANTED IN WRITING INFORMATION DISCLOSED HEREON IS CONFIDENTIAL AND ALL RIGHTS PATENT AND OTHERWISE ARE RESERVED BY SOUTHCO, INC.

P8 WIRE PULLS

DATE	DRAWN	CHKD	SCALE	DRAWING NUMBER
21AUG2004	DLH		.75:1	J-P8-1

NOTES:

- A. MOUNTING SCREWS NOT SUPPLIED. (SCREW LENGTH = PANEL THICKNESS + 5mm)
- B. PACKAGING: PULLS ARE PACKAGED IN A TRAY, LAYERED, FOR INDIVIDUALLY PACKAGED. (1) PULL IN POLYETHYLENE BAG. REMOVE THE -3 SUFFIX IN THE PART No.
- C. RECOMMENDED MAXIMUM TIGHTEN TORQUE: 170 N<sub>m</sub> (15 lbf<sub>in</sub>)
- D. COSMETIC SPECIFICATION: ALL SURFACES UNLESS OTHERWISE NOTED ARE TO CONFORM TO A CLASS \*B\* DESIGNATION AS DESCRIBED IN SOUTHCO COSMETIC SPECIFICATION:
  - S-121-01 FOR CHROME PLATING
  - S-121-02 FOR ZINC PLATING
  - S-121-03 FOR POWDER COATING
  - S-121-05 FOR STAINLESS STEEL PARTS
  - S-121-06 FOR ANODIZED FINISH
- E. HANDLES ARE ROHS COMPLIANT.

REV	DATE	DRAWN/CHKD	DESCRIPTION
F	08MAY2007	DLH/MJS	PRN: P2007-0614
G	01OCT2007	GDW/JSS	PRN: P2007-1232
H	31JUL2008	ACH/MJS	PRN: P2008-0848
I	27APR2009	MJS/MJS	PRN: P2009-0541
J	06APR2011	MJS/TVA	PRN: P2011-0407
K	08MAY2012	CMS/BGL	PRN: P2012-0609
L	23OCT2012	CMS/MSR	PRN: P2012-1438

**MILLIMETERS**

ALL DIMENSIONS WITHOUT TOLERANCES ARE FOR REFERENCE ONLY.



PART NUMBER: P8-AAA-BB-CCD-EE-3

AAA=PULL LENGTH

ROUND PROFILE  
LENGTH BETWEEN MOUNTING HOLES IN MILLIMETERS  
OVAL PROFILE

128mm

BB=PULL HEIGHT

ROUND PROFILE  
HEIGHT OF PULL IN MILLIMETERS  
OVAL PROFILE

38mm

CC=THREAD TYPE

ROUND PROFILE

- 04 = 4-40 UNC-2B THREAD
- 06 = 6-32 UNC-2B THREAD
- 08 = 8-32 UNC-2B THREAD
- 10 = 10-32 UNF-2B THREAD
- 11 = 10-24 UNC-2B THREAD
- M3 = M3 X 0.5-6H THREAD
- M4 = M4 X 0.7-6H THREAD
- M5 = M5 X 0.8-6H THREAD

OVAL PROFILE

- 10 = 10-32 UNF-2B THREAD

EE=MATERIAL/FINISH

ROUND PROFILE

- 11 = ALUMINUM/CLEAR ANODIZED
- 15 = ALUMINUM/BLACK ANODIZED
- 21 = STEEL/BRIGHT CHROME
- 23 = STEEL/ZINC PLATED
- 24 = STAINLESS STEEL/PASSIVATED
- 27 = ALUMINUM/ALUCHROME

OVAL PROFILE

- 11 = ALUMINUM/CLEAR ANODIZED
- 15 = ALUMINUM/BLACK ANODIZED

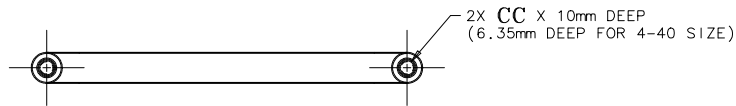
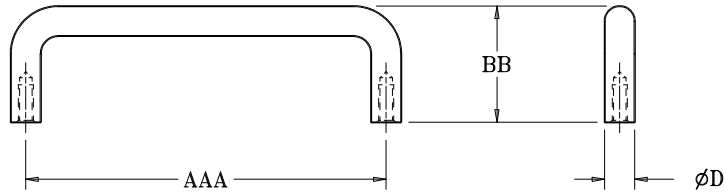
D=PULL PROFILE

ROUND PROFILE = DIAMETER (øD)

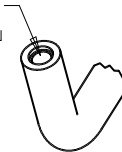
NOTHING = 8mm ROUND PROFILE  
A = 6.35mm ROUND PROFILE  
B = 10mm ROUND PROFILE

OVAL PROFILE = LENGTH X WIDTH (L X W)

V = 15.8mm X 7.1mm OVAL PROFILE

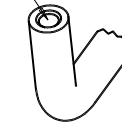


METRIC THREADS WILL HAVE COUNTERBORE - L

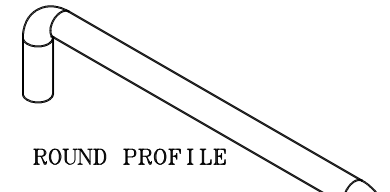


SCALE 1:1

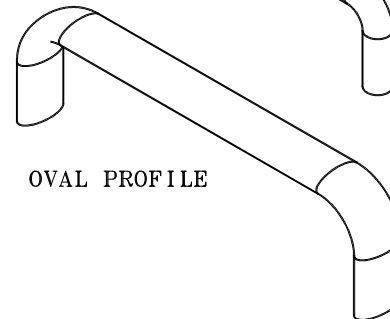
IMPERIAL THREADS WILL HAVE COUNTERSINK - V



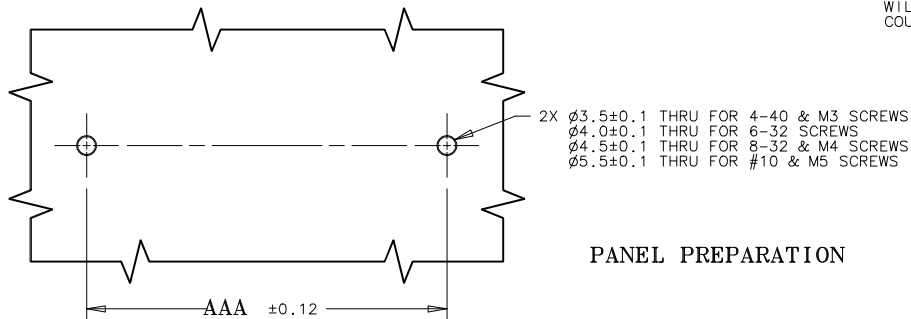
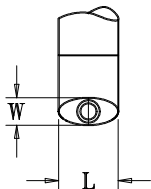
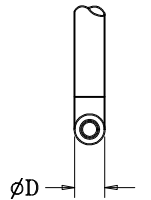
SCALE 1:1



ROUND PROFILE



OVAL PROFILE



PANEL PREPARATION

- 2X ø3.5±0.1 THRU FOR 4-40 & M3 SCREWS
- ø4.0±0.1 THRU FOR 6-32 SCREWS
- ø4.5±0.1 THRU FOR 8-32 & M4 SCREWS
- ø5.5±0.1 THRU FOR #10 & M5 SCREWS