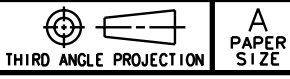


REV	DATE	DRAWN/CHKD	DESCRIPTION	PART NUMBER	OUTER PANEL THICKNESS		B	L	P	H1	H2
					MIN	MAX	±.005				
A	30JAN2003	RLR/CHW	PRN: P2003-0066								
B	22FEB2003	CHW/AJH	PRN: P2003-0134	56-70-1-15	.060	.125	.016	.070	.31	.54	.78
C	08MAY2003	DLH/VNI	PRN: P2003-0348	56-70-2-15	.125	.185	.060	.130	.37	.48	.72
D	22JUL2003	DLH/AJH	PRN: P2003-0621								
E	26APR2004	AAB/AJH	PRN: P2004-0437								
F	02OCT2006	RLR/MDY	PRN: P2006-1327								

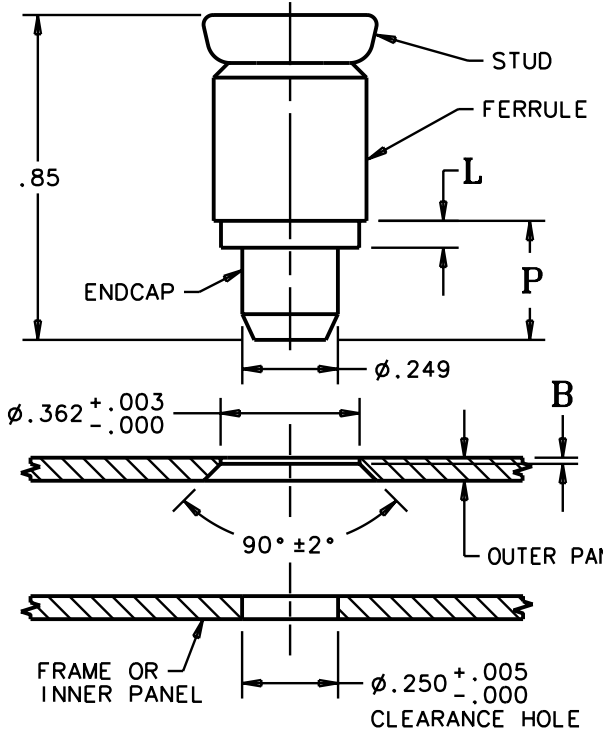
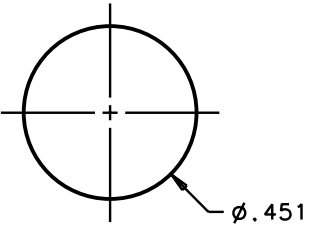
INCHES

ALL DIMENSIONS WITHOUT TOLERANCES ARE FOR REFERENCE ONLY.

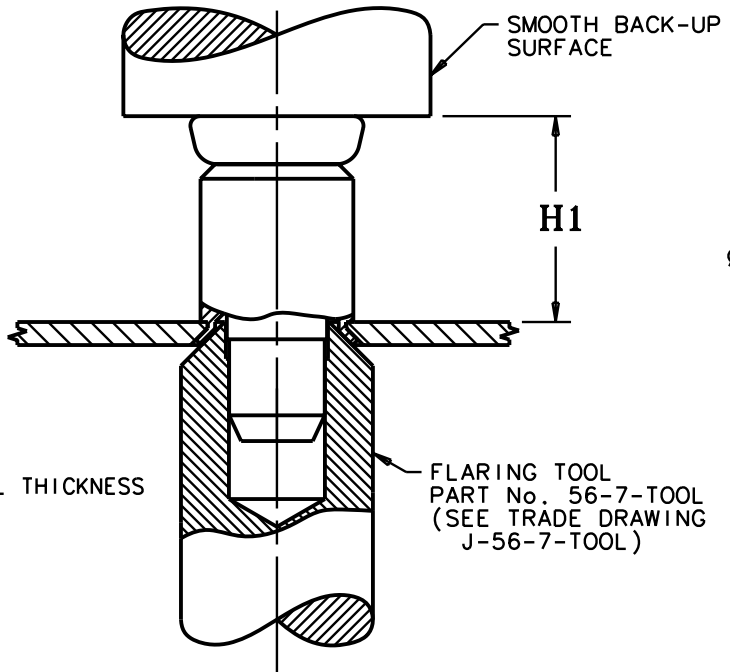


NOTES:

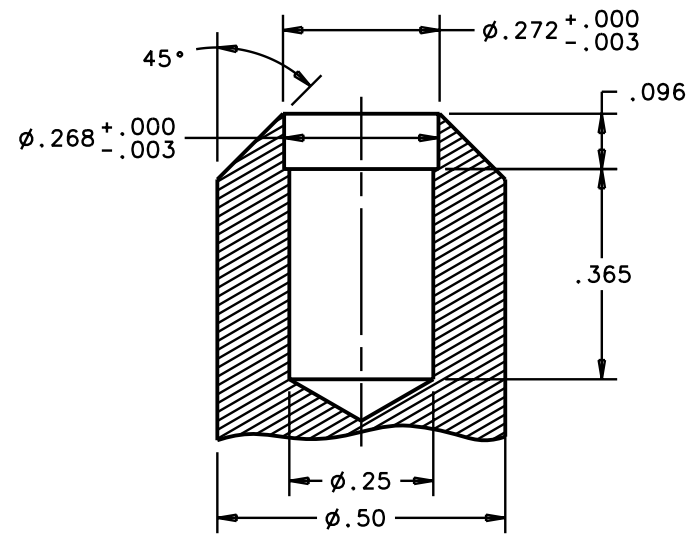
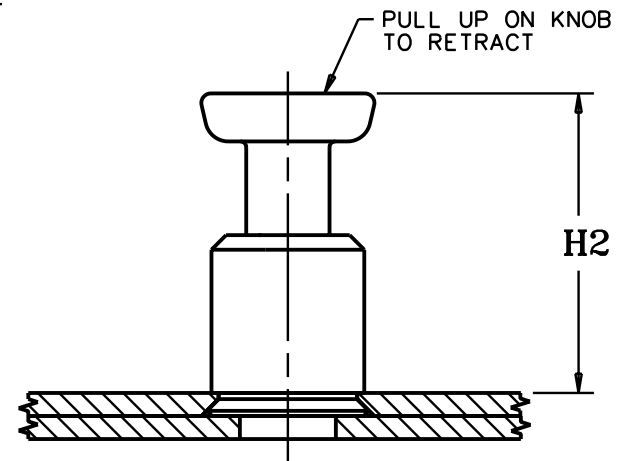
- A. INSTALLATION INSTRUCTIONS:
 1. DRILL OR PUNCH INSTALLATION HOLE.
 2. PLACE FERRULE INTO INSTALLATION HOLE.
 3. PROVIDE SOLID BACK-UP BEHIND HOLE WITH CLEARANCE HOLE FOR ENDCAP.
 4. FLARE FERRULE UNTIL SHOULDER IS FIRMLY AGAINST OUTER PANEL.
- B. MATERIAL AND FINISH:
 - STUD: HARDENED STEEL, ZINC PLATE PLUS SEALER
 - FERRULE: ALUMINUM, NATURAL
 - ENDCAP: STEEL, ZINC PLATE PLUS SEALER
 - SPRING: STAINLESS STEEL, PASSIVATED
- C. PARTS SHIPPED BULK.
- D. RoHS COMPLIANT.



PANEL PREPARATION



ASSEMBLY PART No. 56-70-1-15 SHOWN



FLARING TOOL DETAIL
SCALE 3:1