

southco

PROPRIETARY ITEM - EXCEPT FOR USES EXPRESSLY GRANTED IN WRITING, INFORMATION DISCLOSED HEREON IS CONFIDENTIAL AND ALL RIGHTS, PATENT AND OTHERWISE ARE RESERVED BY SOUTHC0, INC.

**LIFT & TURN COMPRESSION LATCH
MID SIZE CUP**

DATE	DRAWN	CHKD	SCALE	DRAWING NUMBER
02APR2009	MHO		NTS	J-N2-2-500

REV	DATE	DRAWN/CHKD	DESCRIPTION
G	16JUN2009	MHO	PRN: P2009-0739
H	07JUL2009	MHO	PRN: P2009-0813
I	12NOV2013	CMS/LW	PRN: P2013-2248
J	28MAY2014	CMS/BGL	PRN: P2014-1016

PART NUMBER	GRIP RANGE	PAWL TYPE
N2-21-101-12	28 - 43	DEEP OFFSET
N2-21-102-12	43 - 58	OFFSET
N2-21-103-12	58 - 73	FLAT
N2-21-104-12	73 - 88	OFFSET
N2-21-105-12	88 - 104	DEEP OFFSET

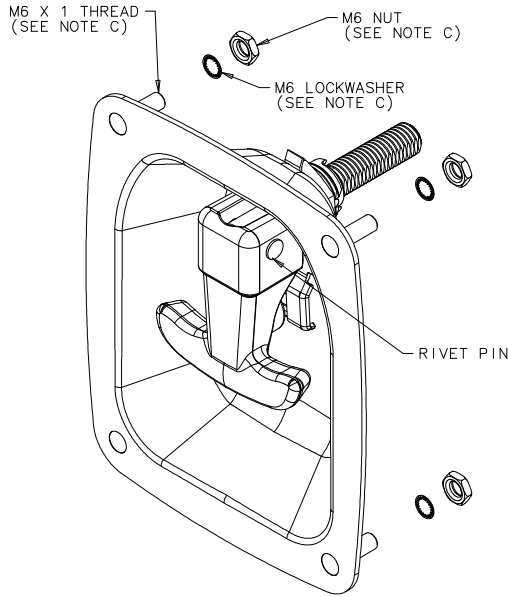
ITEM	PART NUMBER	MATERIAL	FINISH
ASSEMBLY	N2-2-500-01-5	- - -	- - -
HANDLE		ALUMINUM	BLACK POWDER COATED
CUP/STUD ASSEMBLY		SEE NOTE A	BLACK POWDER COATED
LOCK PLATE		STAINLESS STEEL	BLACK POWDER COATED
SLEEVE		STAINLESS STEEL	PASSIVATED
SLEEVE NUT		STAINLESS STEEL	PASSIVATED
TAB WASHER		STAINLESS STEEL	PASSIVATED
SHAFT		STAINLESS STEEL	PASSIVATED
RIVET PIN		STAINLESS STEEL	PASSIVATED
SPRING		STAINLESS STEEL	PASSIVATED
BRASS WEAR WASHER		BRASS	NATURAL
STOP PIN		STAINLESS STEEL	PASSIVATED
M12 HEX NUT (2)		STEEL	ZINC ALLOY PLATE BRIGHT CHROMATE
M6 HEX NUT (4)		STEEL	ZINC ALLOY PLATE BRIGHT CHROMATE
M12 LOCKWASHER (2)		STAINLESS STEEL	PASSIVATED
M6 LOCKWASHER (4)		SPRING STEEL	ZINC ALLOY PLATE BRIGHT CHROMATE
M12 TAB WASHER (2)		STAINLESS STEEL	PASSIVATED
LUBRICANT		SEE NOTE B	BLACK

MILLIMETERS
ALL DIMENSIONS WITHOUT TOLERANCES ARE FOR REFERENCE ONLY.

THIRD ANGLE PROJECTION

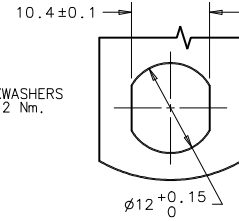
A3 PAPER SIZE

**AVAILABLE GRIP RANGES
STANDARD PAWLS (SOLD SEPARATELY)**

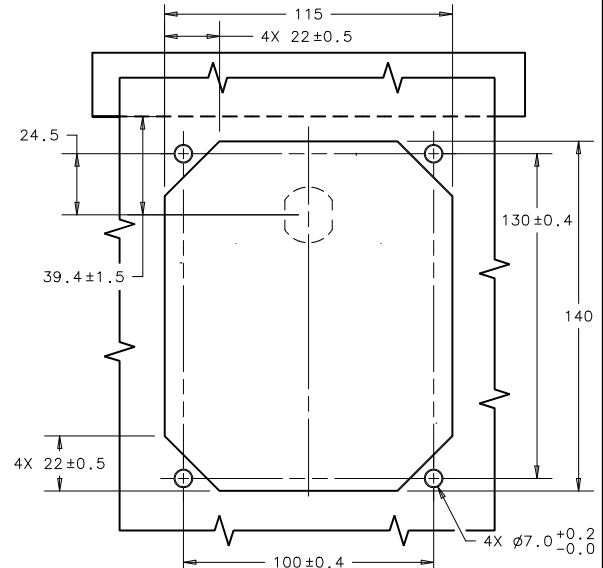


NOTES:

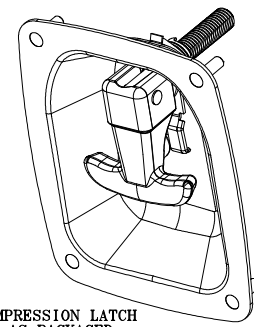
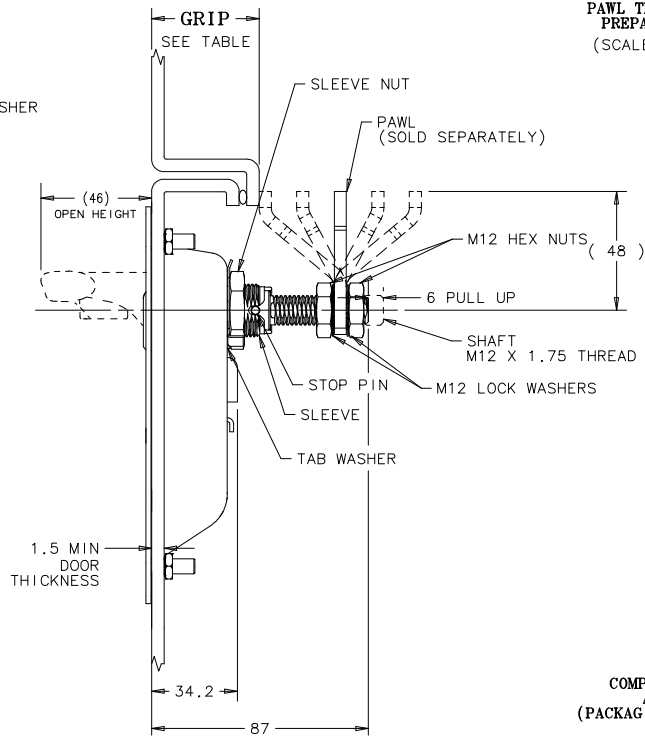
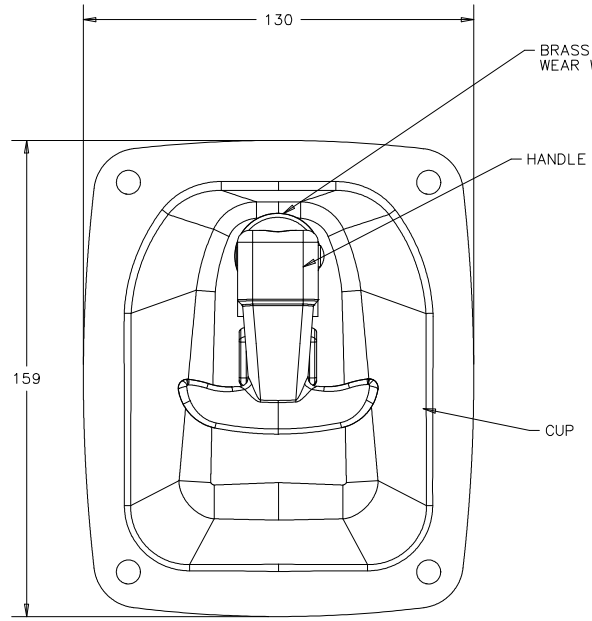
- A. CUP/STUD ASSEMBLY MATERIAL:
CUP: STEEL
STUD: STAINLESS STEEL
- B. LUBRICANT MATERIAL: OIL BASED GREASE WITH MOLYBDENUM DISULFIDE ADDITIVES.
- C. INSTALLATION:
1. PLACE LATCH IN PANEL AND USE (4) M6 X 1 NUTS AND (4) M6 LOCKWASHERS AND INSTALL TO A MAXIMUM RECOMMENDED TIGHTENING TORQUE OF 7.2 Nm.
2. FINAL INSTALLATION WILL REQUIRE ADJUSTMENT TO THE PAWL.
(M12 LOCKNUT TIGHTENING TORQUE: 20-25Nm)



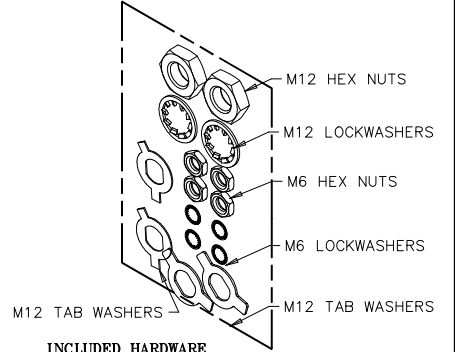
**PAWL THRU HOLE PREPARATION
(SCALE 1.5:1)**



PANEL PREPARATION



**COMPRESSION LATCH
AS PACKAGED
(PACKAGING: PLASTIC BAG)**



**INCLUDED HARDWARE
(PACKAGING: PLASTIC BAG)**