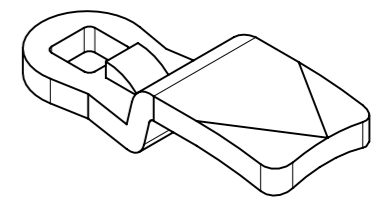
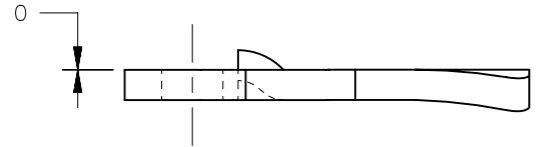


REVISION HISTORY			
REV	DATE	BY	DESCRIPTION
A	27AUG2012	DMS/YGC	PRN: P2009-0459

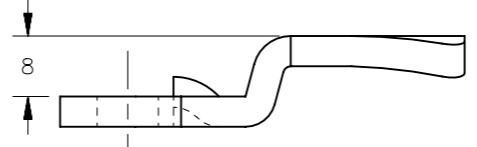


SCALE 1:1

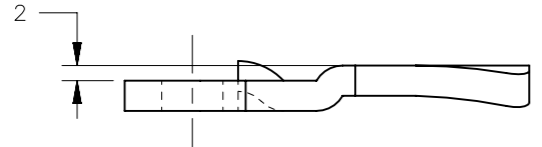
D



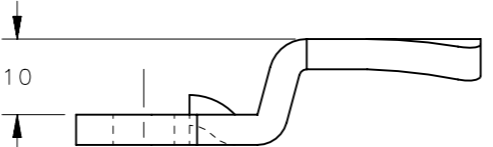
PART NUMBER: E5-6010  
YY=10



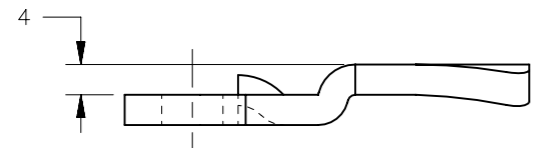
PART NUMBER: E5-6006  
YY=06



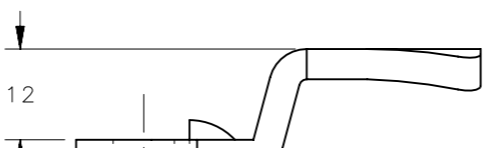
PART NUMBER: E5-6009  
YY=09



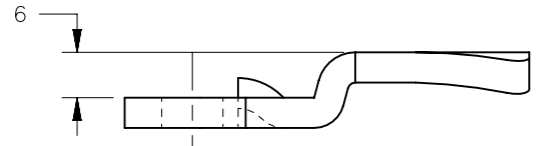
PART NUMBER: E5-6005  
YY=05



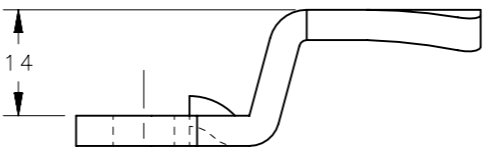
PART NUMBER: E5-6008  
YY=08



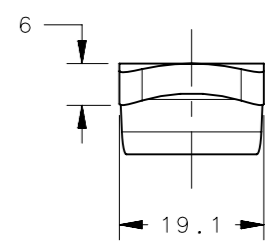
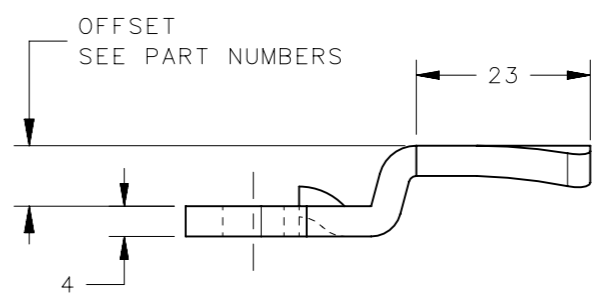
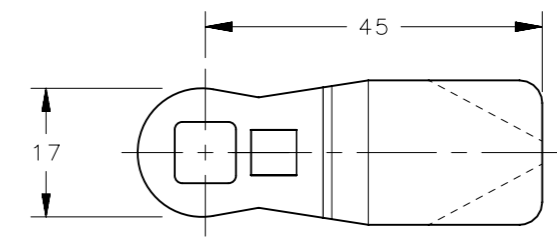
PART NUMBER: E5-6004  
YY=04



PART NUMBER: E5-6007  
YY=07



PART NUMBER: E5-6003  
YY=03



C

B

A

E5-60YY	E5 CAMS	STEEL	ZINC PLATE CHROMATE DIP
PART NUMBER	TYPE OF COMPONENT	MATERIAL	FINISH
THIRD ANGLE PROJECTION		 CONNECT • CREATE • INNOVATE	
MILLIMETERS [IN]			
TOLERANCES UNLESS OTHERWISE NOTED		DESCRIPTION E5 CAMS - BENT UP POSITION (TOOL SECURED)	
ALL DIMENSIONS WITHOUT TOLERANCES ARE FOR REFERENCE ONLY.		SIZE A3	SYSTEM NX
PER ASME Y14.5M-1994		DWG NO. J-E5-60-B	DATE 26SEP2006
EXCEPT FOR USES EXPRESSLY GRANTED IN WRITING, INFORMATION DISCLOSED HEREON IS CONFIDENTIAL AND ALL RIGHTS, PATENT AND OTHERWISE, ARE RESERVED BY SOUTHCO, INC.		DRAWN BY RLR/MJS	SCALE 1:1
		SHEET 1 OF 1	

6

5

4

3

2

1