

REV	DATE	DRAWN/CHKD	DESCRIPTION	PART NUMBER	SCREW PROJECTION		PANEL THICKNESS		B	L
					P-1	P-2	A, MIN	A, MAX		
A	13FEB2004	DLH/AJH	PRN: P2004-0148	47-80-1X0-YZ	1.9	5.1	-	0.8	2	2.6
B	08MAR2004	DLH/AJH	PRN: P2004-0246	47-81-1X0-YZ	3.4	6.6	-	0.8	2.8	3.4
C	11OCT2007	GDW	PRN: P2007-1268	47-82-1X0-YZ	5	8.2	-	0.8	3.6	4.2
				47-80-1X1-YZ	1.9	5.1	0.8	1.6	2.8	3.4
				47-81-1X1-YZ	3.4	6.6	0.8	1.6	3.6	4.2
				47-82-1X1-YZ	5	8.2	1.6	2.4	4.4	5
				47-80-1X2-YZ	3.4	6.6	2.4	3.2	5.2	5.7
				47-81-1X2-YZ	5	8.2	4	4.8	6	6.5
				47-80-1X3-YZ	3.4	6.6				
				47-81-1X3-YZ	5	8.2				
				47-80-1X4-YZ	5	8.2				
				47-80-1X5-YZ	5	8.2				

**MILLIMETERS**

ALL DIMENSIONS WITHOUT TOLERANCES ARE FOR REFERENCE ONLY.

THIRD ANGLE PROJECTION

A3 PAPER SIZE

**MATERIAL AND FINISH:**

KNOB: 6000 SERIES ALUMINUM, NATURAL OR BLACK POWDER COATED

SCREW: 400 SERIES STAINLESS STEEL, PASSIVATED; OR HARDENED CARBON STEEL, ZINC PLATE, CHROMATE PLUS SEALER (SEE \*Z\* TABLE) (NOTE: KNOB AND TOP OF SCREW AVAILABLE WITH POWDER COATING; SEE \*Y\* TABLE)

FERRULE: 6000 SERIES ALUMINUM, NATURAL

SPRING: 300 SERIES STAINLESS STEEL, PASSIVATED

WASHER: 300 SERIES STAINLESS STEEL, PASSIVATED

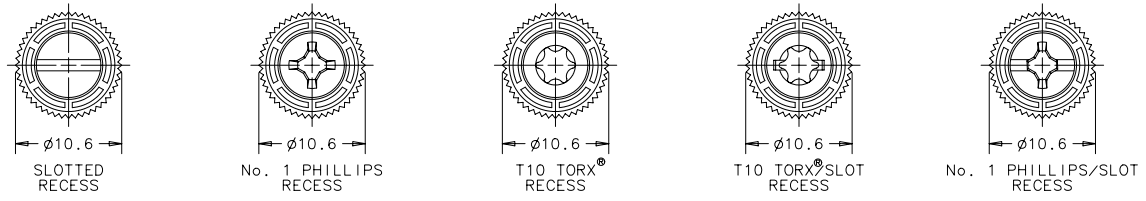
- \*X\* SCREW RECESS**
- 1 - SLOTTED
  - 3 - No. 1 PHILLIPS
  - 5 - T10 TORX®
  - 7 - T10 TORX®/SLOT COMBINATION
  - 9 - No. 1 PHILLIPS/SLOT COMBINATION

- \*Y\* FINISH ON KNOB & SCREW HEAD**
- 1 - BRIGHT
  - 4 - CUSTOM COLOR. SEE J-47-0-3 FOR ADDITIONAL SUFFIX
  - 5 - BLACK POWDER COATED

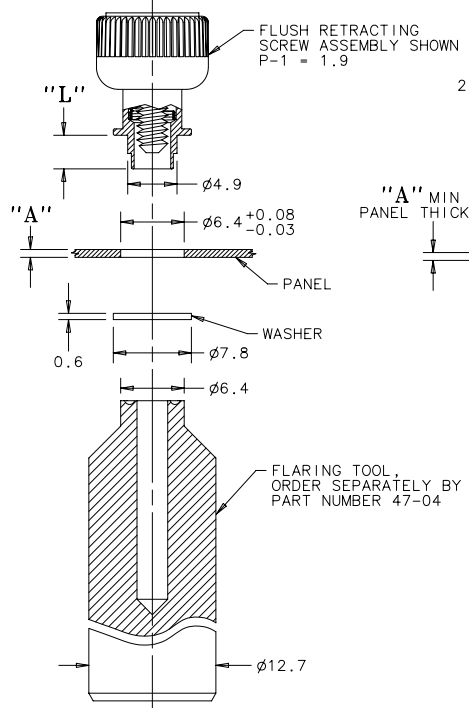
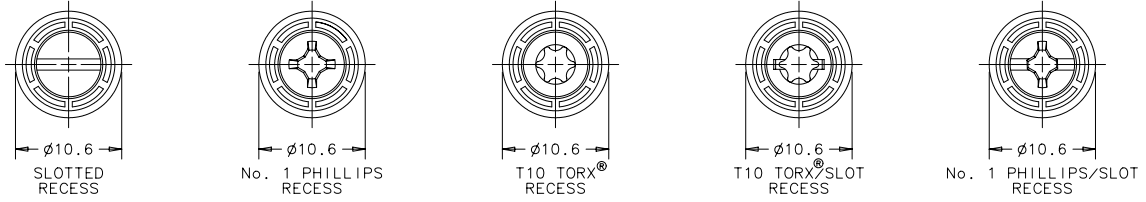
**\*Z\* KNOB TYPE AND SCREW MATERIAL**

KNOB	SCREW MATERIAL	RECESS	
		SLOTTED TORX® PHILLIPS/SLOT	TORX®/SLOT
KNURLED	STAINLESS STEEL	0	N/A
SMOOTH	STAINLESS STEEL	1	N/A
KNURLED	STEEL	4	0
SMOOTH	STEEL	5	1

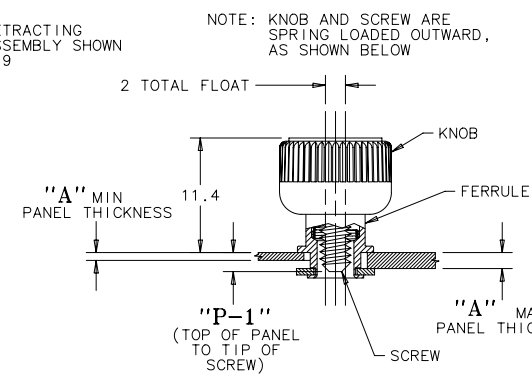
**KNURLED KNOBS**



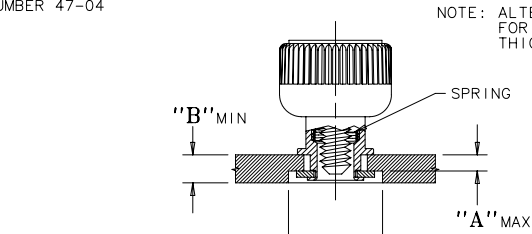
**SMOOTH KNOBS**



**PANEL PREPARATION**  
PART NUMBER: 47-80-1X1-Y0 SHOWN



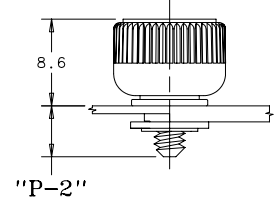
**UNFASTENED**  
PART NUMBER: 47-80-1X1-Y0 SHOWN



COUNTERBORE OPPOSITE SIDE OF PANEL Ø9.4 MIN, LEAVING THICKNESS OF \*A\* MAX

**TO INSTALL FASTENER:**

1. DRILL OR PUNCH HOLE AS SHOWN BELOW.
2. PLACE FERRULE INTO INSTALLATION HOLE.
3. CENTER TOOL ON THE SCREW THREAD, THEN ROLL FERRULE OVER WASHER TO CAPTIVATE THE ASSEMBLY.



**FASTENED**  
PART NUMBER: 47-80-1X1-Y0 SHOWN

