

southco

PROPRIETARY ITEM - EXCEPT FOR USES EXPRESSLY GRANTED IN WRITING INFORMATION DISCLOSED HEREON IS CONFIDENTIAL AND ALL RIGHTS PATENT AND OTHERWISE ARE RESERVED BY SOUTHCO, INC.

CAM LOCK, FLAT KEY STYLE, SEALED

DATE	DRAWN	CHKD	SCALE	DRAWING NUMBER
13APR2003	DLH	BS	1:1	J-CM-2

REV	DATE	DRAWN/CHKD	DESCRIPTION
B	19JUL2003	RLR/MJS	PRN: P2003-0614
C	20AUG2003	AJH/MJS	PRN: P2003-0714
D	06JUL2004	CHW/MLG	PRN: P2004-0845
E	15JUN2006	AJH/RLR	PRN: P2006-0827
F	16JUN2006	LCR/MDY	PRN: P2006-0051
G	13JUL2006	LCR/MJS	PRN: P2006-0960
H	23OCT2007	VSV/VGV	PRN: P2007-1322

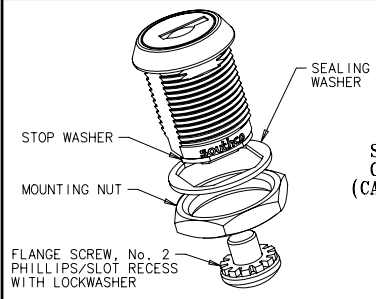
PART NUMBER: CM-2-1-2

INCHES

ALL DIMENSIONS WITHOUT TOLERANCES ARE FOR REFERENCE ONLY.

THIRD ANGLE PROJECTION

B PAPER SIZE



SUBASSEMBLY PART No. CM-2-2B101-2SB SHOWN (CAM ORDERED SEPARATELY) SEE DWG J-CM-C FOR CAM PART NUMBERS.

- HOUSING LENGTHS:
- 1 = .875
 - 2 = 1.125
 - 3 = 1.375
 - 4 = 1.625
 - 5 = 1.875

- CAM ROTATION ANGLE:
- 01 = 12 - 3 O'CLOCK (CW)
 - 09 = 12 - 9 O'CLOCK (CCW)

KEY REMOVAL:

- B = LOCKED/UNLOCKED POSITION
- L = LOCKED POSITION ONLY

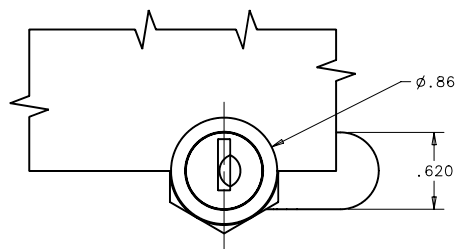


FOR KEY INFORMATION SEE DRAWING J-PK-10

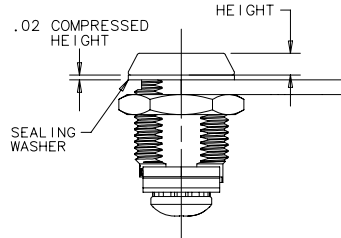
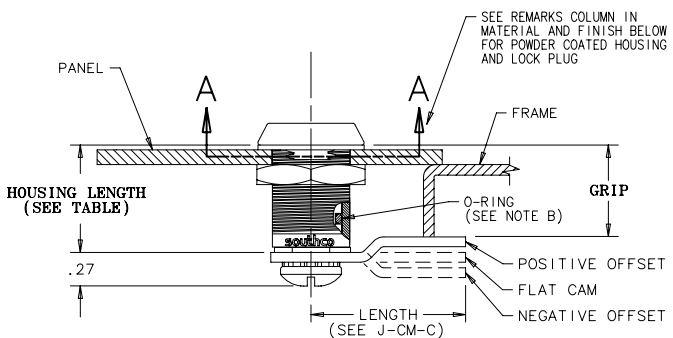
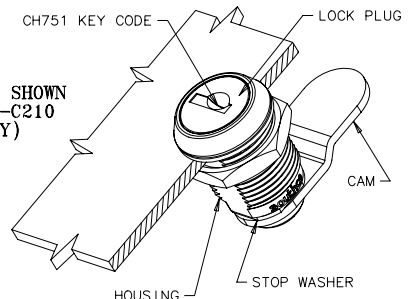
- PLUG FINISH:
- B = BLACK POWDER COAT (NO SHUTTER)
 - C = BRIGHT CHROME (NO SHUTTER)
 - M = MARKED SCALP, STAINLESS STEEL SCALP PLUS STEEL, NICKEL PLATED SHUTTER
 - N = BRIGHT NICKEL (NO SHUTTER)
 - P = MARKED SCALP, BLACK POWDER COAT
 - R = MARKED SCALP, BRIGHT CHROME
 - S = STAINLESS STEEL SCALP PLUS STEEL, NICKEL PLATED SHUTTER
 - T = STAINLESS STEEL SCALP
 - U = NO LOCK PLUG
- (NOTE: STANDARD CODE MARKING IS IMPRINTED ON KEY(S). LOCKS WITH "MARKED SCALP" HAVE ADDITIONAL CODE MARKING ON THE SCALP.)

NOTES:

- A. FOR INSTALLATION AND PANEL PREPARATION SEE DRAWING J-CM-2-A.
- B. SEE J-CM-C FOR CAM PART NUMBERS.



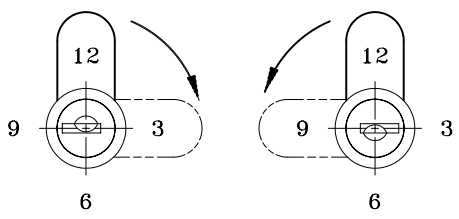
PART NUMBER CM-2-2B101-2SB SHOWN ASSEMBLED WITH CAM P/N CM-C210 (CAM ORDERED SEPARATELY)



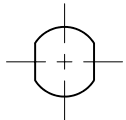
HOUSING LENGTH	HEIGHT
1	.25
2	.18
6	.18
3	.18
4	.18
5	.18

CAM ROTATION DIRECTION

NOTE: LOCK PLUG IS SHOWN IN THE UNLOCKED POSITION. SOLID LINE CAM DEPICTS UNLOCKED CAM POSITION. DOTTED LINE CAM DEPICTS LOCKED CAM POSITION. LOCK PLUG IN LOCKED POSITION IS NOT SHOWN.



01 = 12-3 O'CLOCK (CW) 09 = 12-9 O'CLOCK (CCW)



PANEL PREPARATION ORIENTATION

MATERIAL AND FINISH

COMPONENT	MATERIAL DESCRIPTION	FINISH DESCRIPTION	REMARKS
LOCK PLUG BODY	DIE CAST ZINC	TRIVALENT CHROMATE CONV. COATED	
HOUSING	DIE CAST ZINC	CHROME PLATED TRIVALENT CHROMATE CONV. COATED & POWDER COATED	HEAD POWDER COATED ABOVE SECTION A-A
CAM	STEEL	ZINC PLATE, BRIGHT CHROMATE CONV. COATING	
O-RING	NITRILE	BLACK	
SEALING WASHER	NATURAL RUBBER(80°)	BLACK	
STOP WASHER	STEEL	ZINC PLATE, BRIGHT CHROMATE CONV. COATING	
SCREW WITH LOCKWASHER	STEEL	ZINC PLATE, BRIGHT CHROMATE CONV. COATING	
MOUNTING NUT	DIE CAST ZINC	TRIVALENT CHROMATE CONV. COATING	
LOCKPLUG SCALP	STAINLESS STEEL	NATURAL	
SHUTTER	BRASS	NICKEL PLATE	
SHUTTER SPRING	STEEL ALLOY	HEAT TREAT	
WAFERS	BRASS	NATURAL	
WAFER SPRINGS	STAINLESS STEEL	NATURAL	