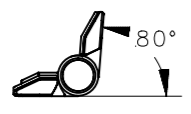
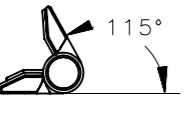
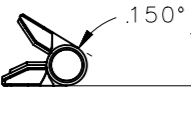



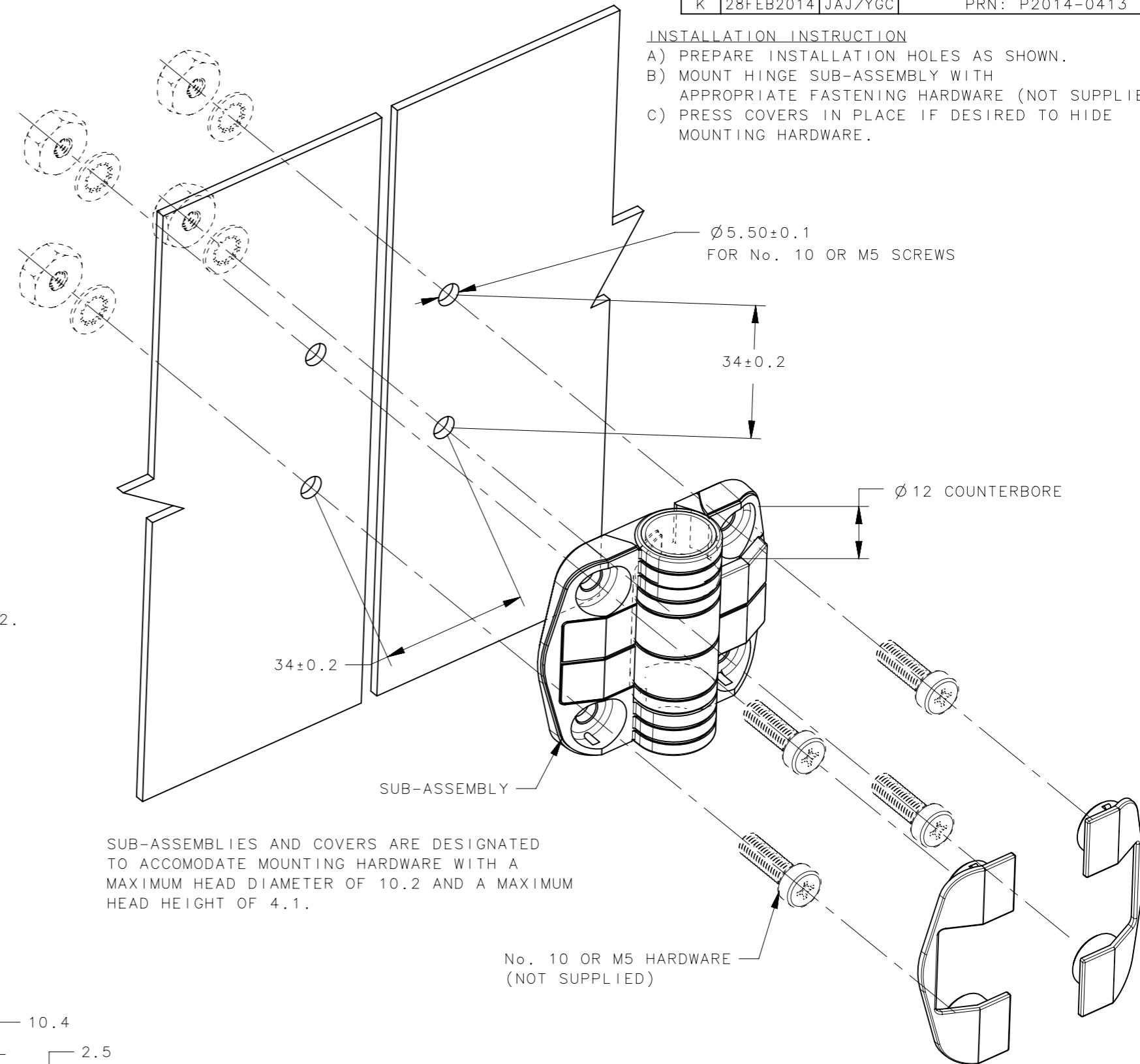
ASSEMBLY DESCRIPTION

ASSEMBLY No.	POSITION TORQUE	DETENTED OPEN ANGLE	SUB-ASSEMBLY No.	COVER No.
C6-1	LOW		C6-31	C6-601
C6-2	MID.		C6-32	C6-601
C6-3	HIGH		C6-33	C6-601
C6-4	LOW		C6-34	C6-601
C6-5	MID.		C6-35	C6-601
C6-6	HIGH		C6-36	C6-601
C6-7	LOW		C6-37	C6-601
C6-8	MID.		C6-38	C6-601
C6-9	HIGH		C6-39	C6-601
C6-0	-	NO DETENTS 	C6-30	C6-601

REVISION HISTORY			
REV	DATE	BY	DESCRIPTION
K	28FEB2014	JAJ/YGC	PRN: P2014-0413

INSTALLATION INSTRUCTION

- A) PREPARE INSTALLATION HOLES AS SHOWN.
- B) MOUNT HINGE SUB-ASSEMBLY WITH APPROPRIATE FASTENING HARDWARE (NOT SUPPLIED)
- C) PRESS COVERS IN PLACE IF DESIRED TO HIDE MOUNTING HARDWARE.

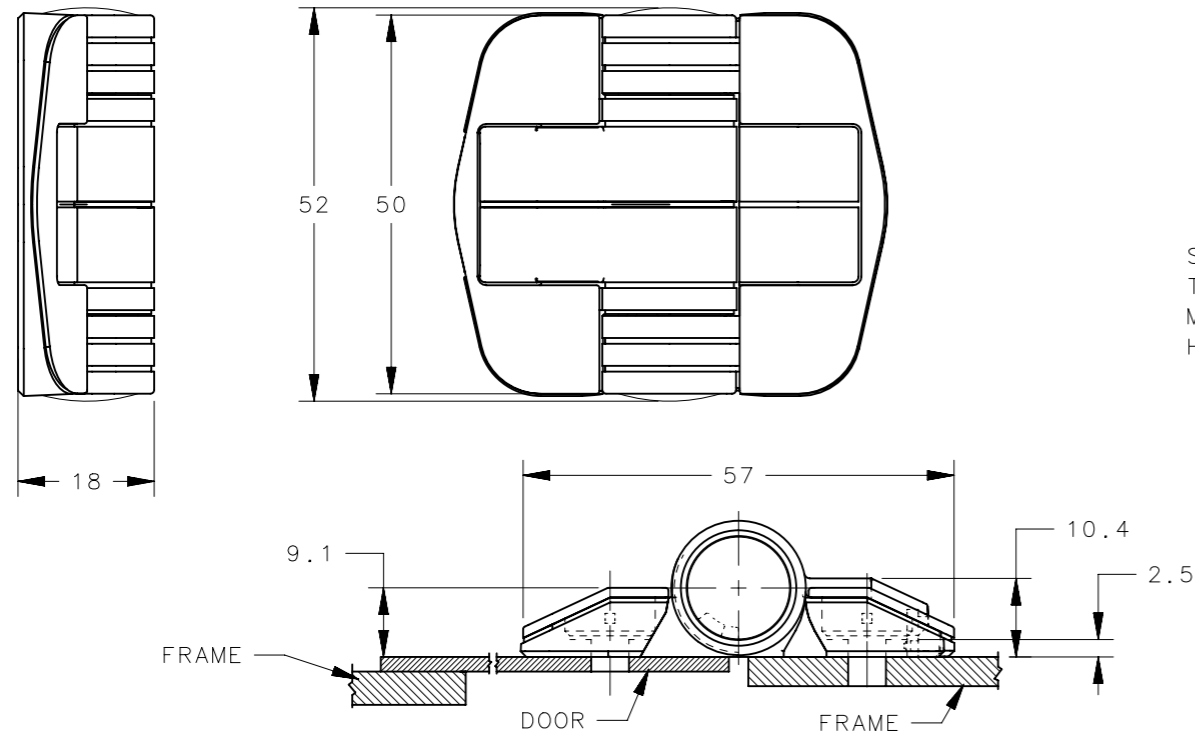


SUB-ASSEMBLIES AND COVERS ARE DESIGNATED TO ACCOMODATE MOUNTING HARDWARE WITH A MAXIMUM HEAD DIAMETER OF 10.2 AND A MAXIMUM HEAD HEIGHT OF 4.1.

ASSEMBLY PART NUMBERS SHOWN CONSIST OF 1 SUB-ASSEMBLY AND 2 COVERS, SHIPPED SEPERATELY, BULK.

OTHER ASSEMBLY PART NUMBERS

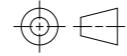

FOR 1 SUB-ASSEMBLY AND 2 COVERS PACKAGED IN A POLY BAG, ADD -P TO THE PART NUMBER. EXAMPLE: C6-3-P.  
 FOR ASSEMBLIES WITH STAINLESS STEEL DETENT TUBE, INSERT "2" BEFORE LAST DIGIT OF ASSEMBLY PART NUMBER. EXAMPLE: C6-23 INSTEAD OF C6-3.  
 FOR SUB-ASSEMBLIES WITH STAINLESS STEEL DETENT TUBE, INSERT "5" BEFORE LAST DIGIT OF SUB-ASSEMBLY PART NUMBER. EXAMPLE: C6-52 INSTEAD OF C6-32.



MATERIAL & FINISH

EXTERNAL COMPONENTS  
 HINGE LEAVES, RETAINING TAB, END PLUGS, AND COVERS: ACETAL, BLACK.  
 INTERNAL COMPONENTS  
 BALLS: STAINLESS STEEL  
 SPRINGS: 302 STAINLESS STEEL, NATURAL  
 DETENT TUBE: 1065 STEEL HARDENED, ZINC PLATE, CHROMATE PLUS SEALER. OR 304 STAINLESS STEEL, PASSIVATED.

FOR DETAIL DESCRIPTION OF ASSEMBLIES SEE TABLE GIVEN ABOVE

THIRD ANGLE PROJECTION						
MILLIMETERS [IN]						
TOLERANCES UNLESS OTHERWISE NOTED	DESCRIPTION			SOUTHCO C6		
ALL DIMENSIONS WITHOUT TOLERANCES ARE FOR REFERENCE ONLY.	SIZE			DOOR POSITIONING HINGE		
PROPRIETARY ITEM	A3	NX	J-C6-100			
EXCEPT FOR USES EXPRESSLY GRANTED IN WRITING, INFORMATION DISCLOSED HEREON IS CONFIDENTIAL AND ALL RIGHTS, PATENT AND OTHERWISE, ARE RESERVED BY SOUTHCO, INC.	PER ASME Y14.5M-1994	DRAWN BY	JAJ	DATE	27SEP2013	SHEET 1 OF 1