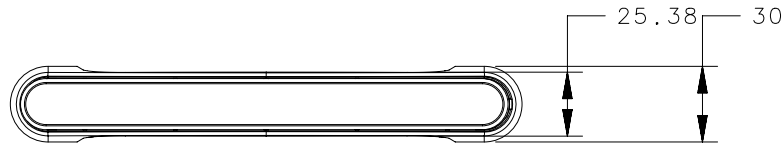
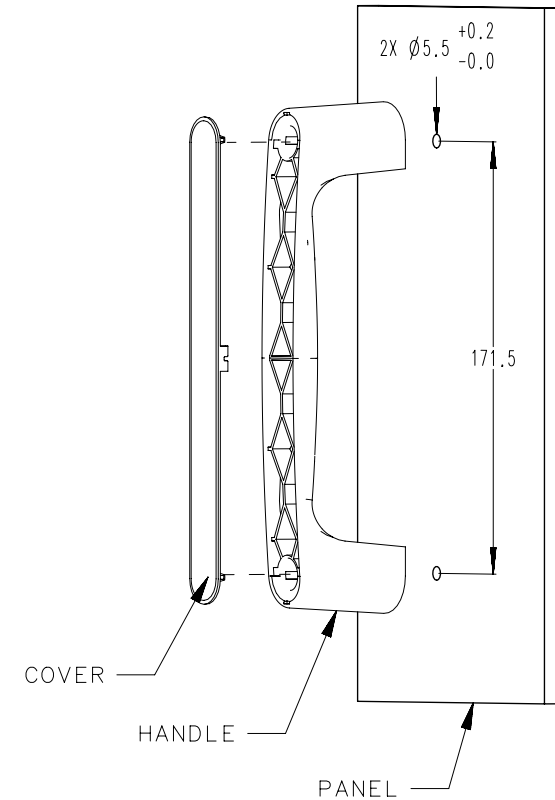
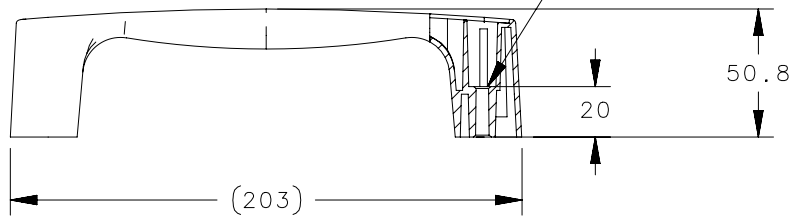


REVISION HISTORY			
REV	DATE	BY	DESCRIPTION
D	09MAR2023	CRM/DMS	PRN: P2023-0458



USE TWO M5 OR #10 SCREWS
RECESS PERMITS A MAXIMUM
HEAD SIZE OF $\varnothing 10.5$



NOTES

- A. THE FOLLOWING SCREWS MAY BE USED TO MOUNT THE HANDLE - M5 OR #10 SCREWS WITH THE FOLLOWING HEAD STYLES - HEX SLOTTED HEAD, PAN HEAD, FILLISTER HEAD, BINDING HEAD, ROUND HEAD, HEX FLANGE HEAD AND HEX WASHER HEAD.
- B. HANDLES ARE BULK PACKAGED
- C. INSTALLATION INSTRUCTIONS:
 1. DRILL PILOT HOLES AS SHOWN.
 2. MOUNT HANDLE USING M5 OR #10 SCREWS. (SCREWS ARE NOT PROVIDED)
 3. SNAP COVER ONTO HANDLE.
- D. B8-63-3-P HAS TO BE ORDERED IN MIN QUANTITIES OF 150, BULK PACKAGED AS FOLLOWS:
4 LAYERS OF 34 HANDLES EACH. WITH FIFTH LAYER HAVING 14 HANDLES, 150 HANDLE COVERS BAGED AND PLACED ON THE FIFTH LAYER WITH THE HANDLES.

2	-	HANDLE	ABS/PC	BLACK
1	-	COVER	ABS/PC	BLACK
-	B8-63-3-P (SEE NOTE D)	ASSEMBLY	-	-
2	-	HANDLE	ABS/PC	BLACK
1	-	COVER	ABS/PC	BLACK
-	B8-63-3	ASSEMBLY	-	-
NO.	ASSEMBLY PART NUMBER	TYPE OF COMPONENT	MATERIAL	COLOR

THIRD ANGLE PROJECTION		southco [®] CONNECT • CREATE • INNOVATE	
MILLIMETERS [IN]			
SURFACE AREA		DESCRIPTION FRONT MOUNT B8 HANDLE	
VOLUME		SIZE A4 SYSTEM NX DWG NO. J-B8-63	
PROPRIETARY ITEM EXCEPT FOR USES EXPRESSLY GRANTED IN WRITING, INFORMATION DISCLOSED HEREON IS CONFIDENTIAL AND ALL RIGHTS, PATENT AND OTHERWISE, ARE RESERVED BY SOUTHCO, INC.		PER ASME Y14.5M-1994	
DRAWN BY SWD		DATE 21JAN1998	
SCALE 1:3		SHEET 1 OF 1	