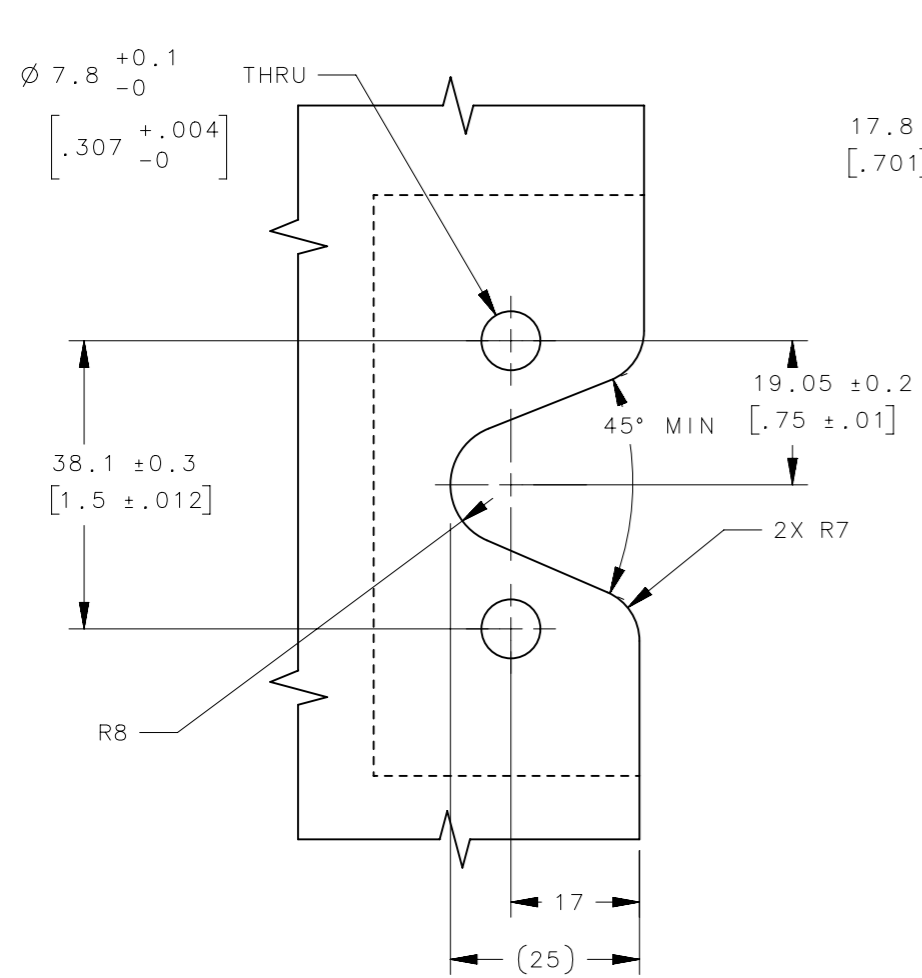


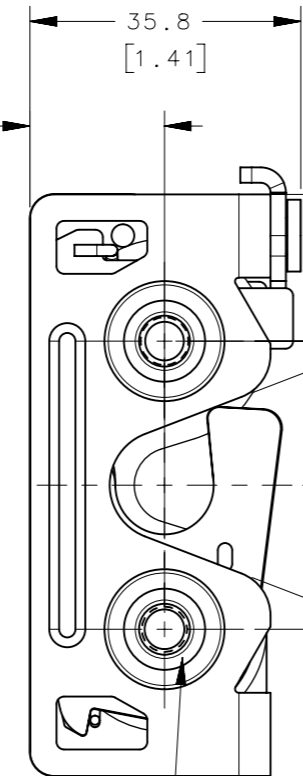
# R4-30-3 I - 10 B - M

REVISION HISTORY			
REV	DATE	BY	DESCRIPTION
D	31MAR2021	ABK/VK	PRN: P2021-0645

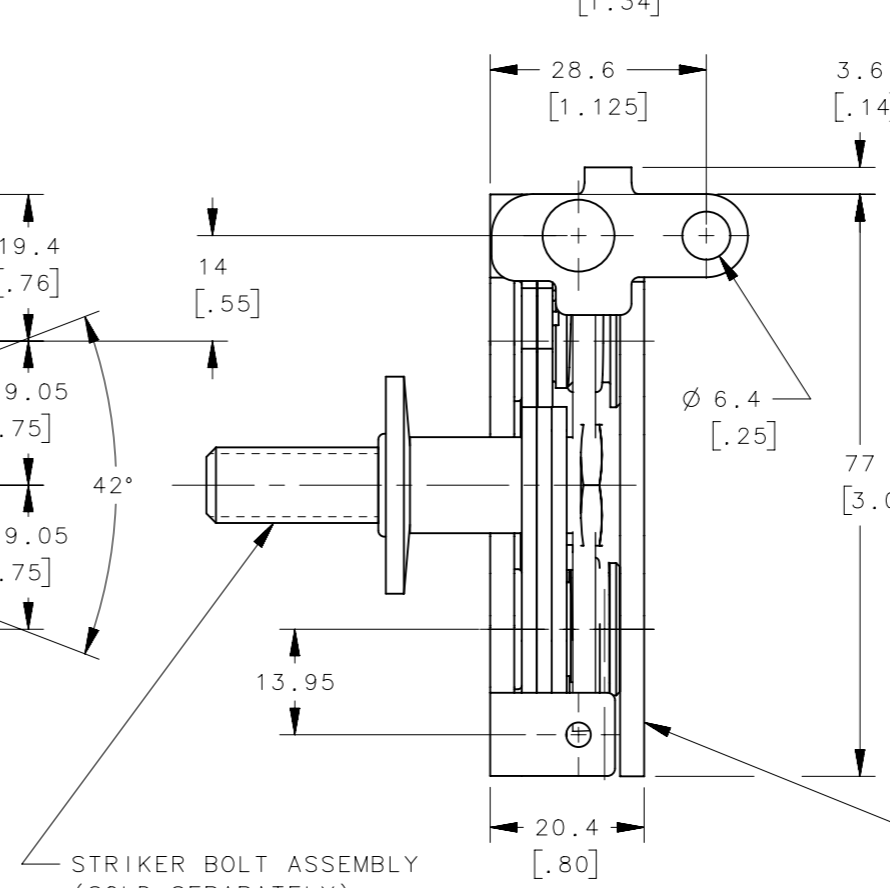
- |                          |                     |                                    |
|--------------------------|---------------------|------------------------------------|
| <b>I</b> MOUNTING OPTION | <b>B</b> LATCHING   | <b>M</b> MATERIAL                  |
| 0 6.7 mm THRU HOLE       | 1 STANDARD          | 10 STEEL, ZINC PLATED              |
| 1 1/4-20 THREAD          | 5 INTEGRATED BUMPER | 15 STEEL, BLACK ZINC NICKEL PLATED |
| 2 M6 THREAD              |                     | 77 STEEL, ZINC NICKEL PLATED       |



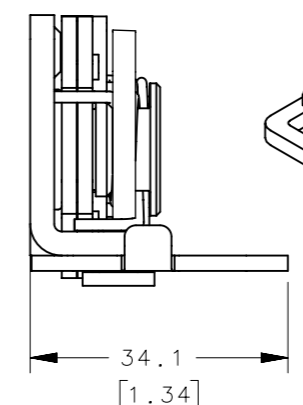
PANEL PREPARATION



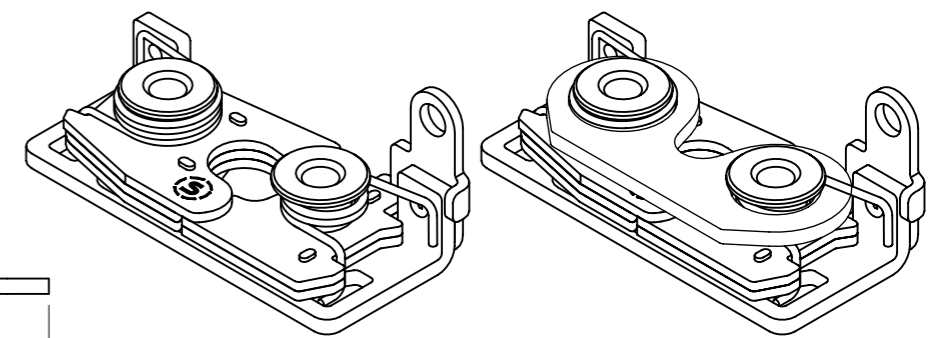
2X MOUNTING HOLES



STRIKER BOLT ASSEMBLY (SOLD SEPARATELY) SEE J-R4-90-321 FOR DETAILS

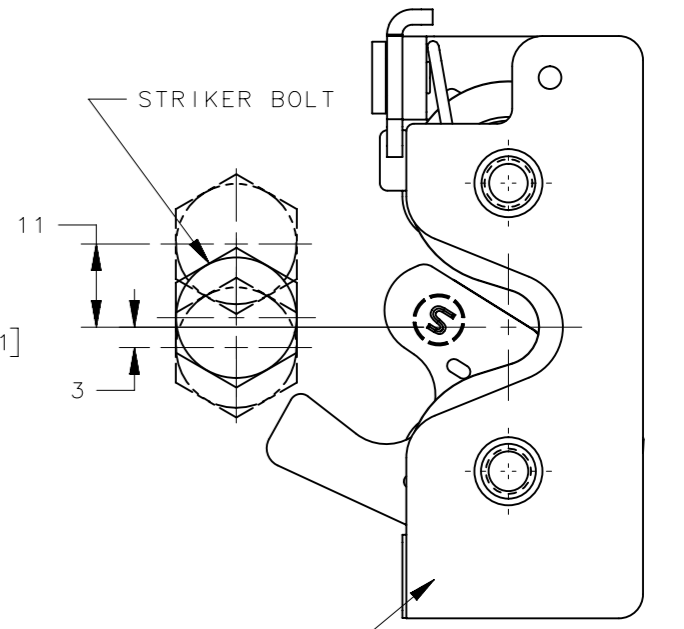


OPTIONAL: (SOLD SEPARATELY) SUPPORT PLATE (R4-38-101-10) SEE J-R4-38-101 FOR DETAILS



R4-30-3 I-101-M (STANDARD) SCALE 3:4

R4-30-3 I-105-M (INTEGRATED BUMPER) SCALE 3:4



MISALIGNMENT VIEW (SEE NOTE B)

NOTES:  
A. MATERIAL AND FINISH:

1. STEEL:  
- HOUSING, LEVER AND INTERNAL COMPONENTS: STEEL  
- PAWL AND TRIGGER: HARDENED STEEL  
- SPRING: STAINLESS STEEL, PASSIVATED

B. THE MISALIGNMENT VIEW ASSUMES THE LATCH IS CONNECTED TO A PERFECTLY RIGID DOOR AND HINGE; THEREFORE, THERE IS NO DOOR AND/OR HINGE SLACK ASSOCIATED WITH THESE DIMENSIONS, THE MISALIGNMENT VIEW DOES NOT TAKE FLEXING OF THE STRIKER BOLT INTO ACCOUNT.

THIRD ANGLE PROJECTION		 CONNECT • CREATE • INNOVATE	
MILLIMETERS [IN]			
TOLERANCES UNLESS OTHERWISE NOTED		DESCRIPTION	
ALL DIMENSIONS WITHOUT TOLERANCES ARE FOR REFERENCE ONLY.		R4 LATCH ASSEMBLY - PERPENDICULAR RIGHT HAND ACTUATION	
PER ASME Y14.5M-1994		SIZE A3	SYSTEM NX
DRAWN BY ACH/RJB		DATE 18JUN2013	DWG NO. J-R4-30-30-101
SCALE 1:1		SHEET 1 OF 1	