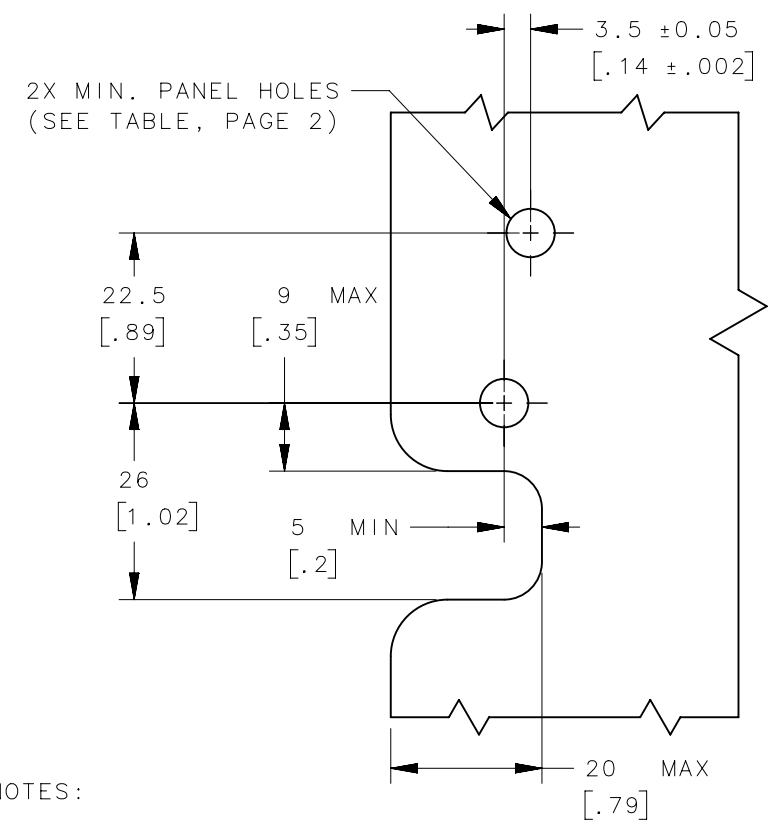
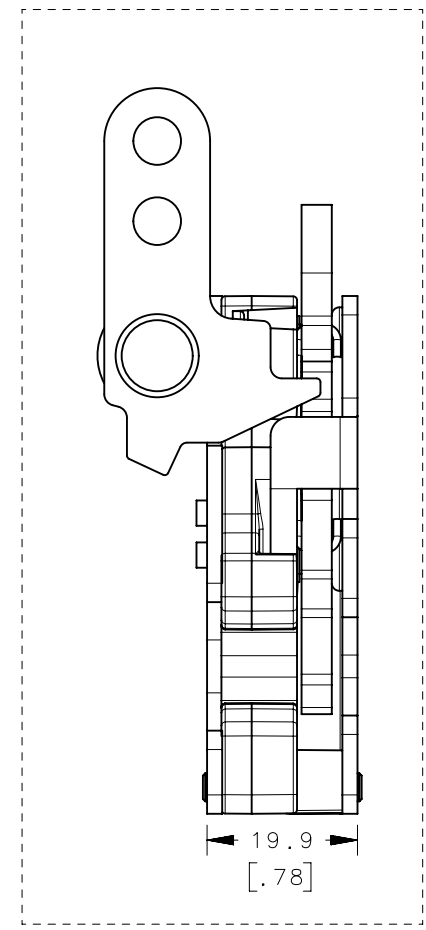
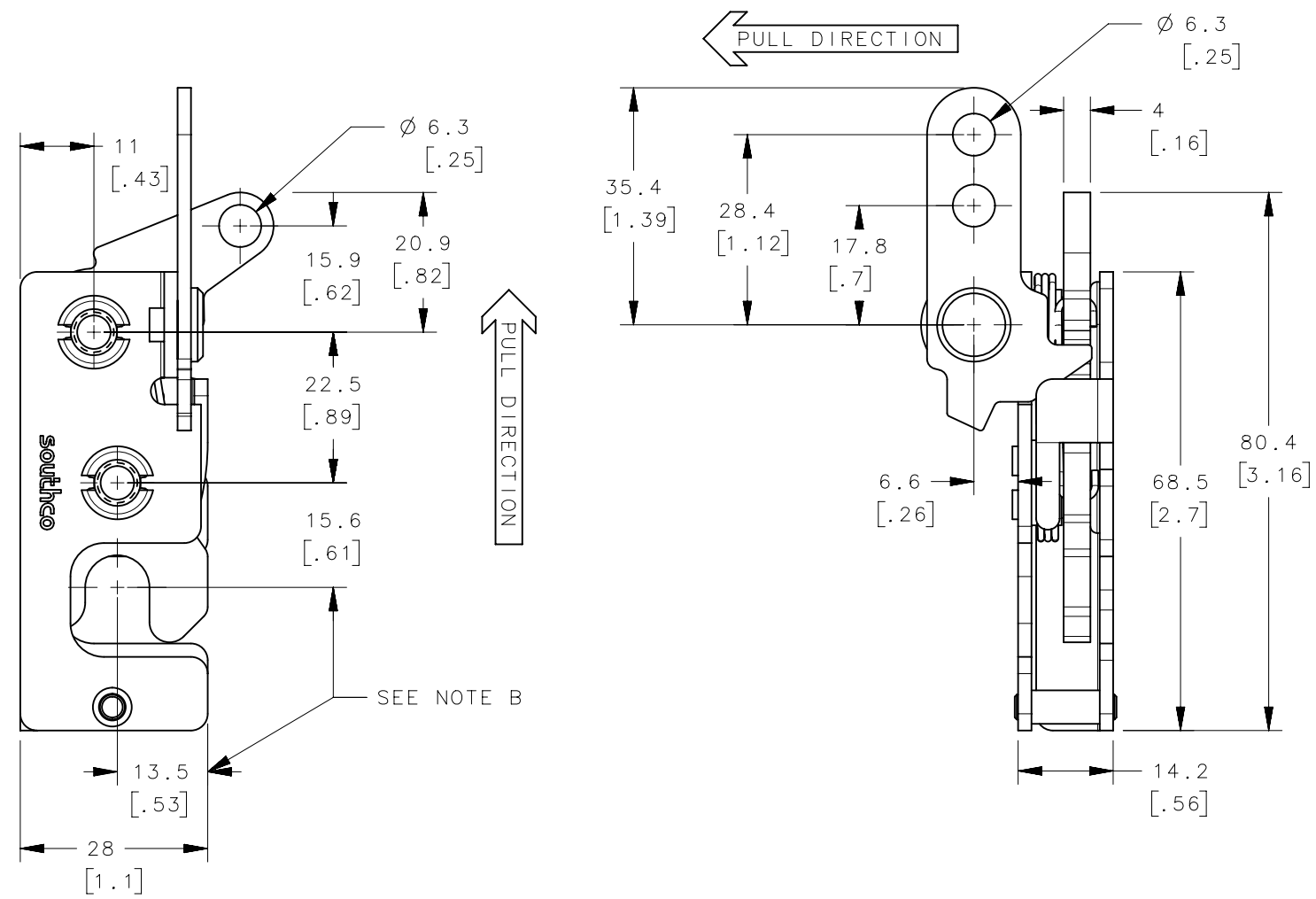


REVISION HISTORY			
REV	DATE	BY	DESCRIPTION
B	03NOV2015	DGJ/ACH	PRN: P2015-2204

STANDARD

WITH INTEGRATED BUMPER

PANEL PREPARATION



- NOTES:
- A. MATERIAL AND FINISH:
 - HOUSING, LEVER, RIVET AND INTERNAL COMPONENTS: STEEL, ZINC PLATED, BRIGHT CHROMATE
 - PAWL AND TRIGGER: HARDENED STEEL, ZINC PLATED, BRIGHT CHROMATE
 - SPRING: STAINLESS STEEL, PASSIVATED
 - B. THESE DIMENSIONS REQUIRED FOR MOUNTING STRIKER BOLT.

ASSEMBLY PART No.

R4-10-□□-80□-10

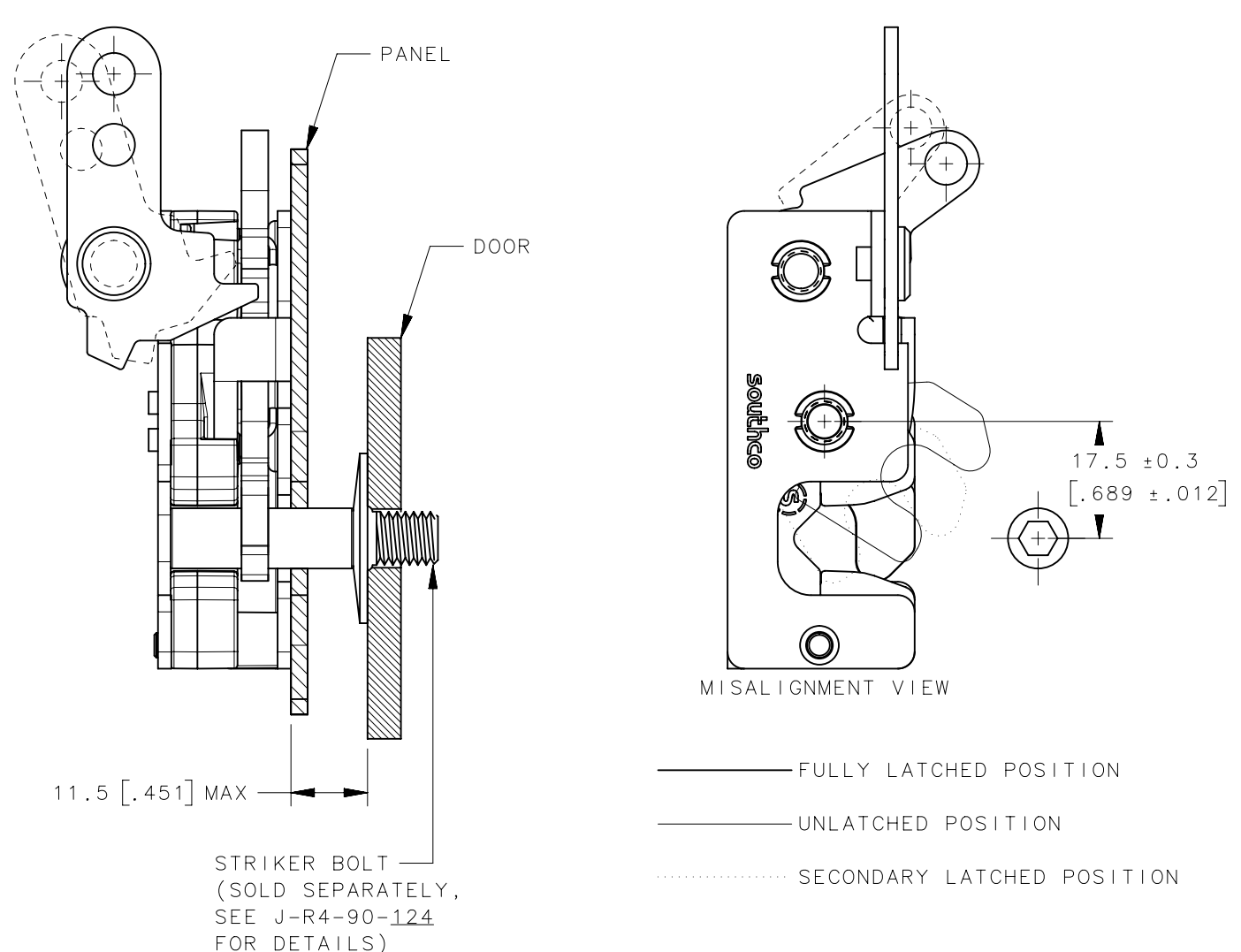
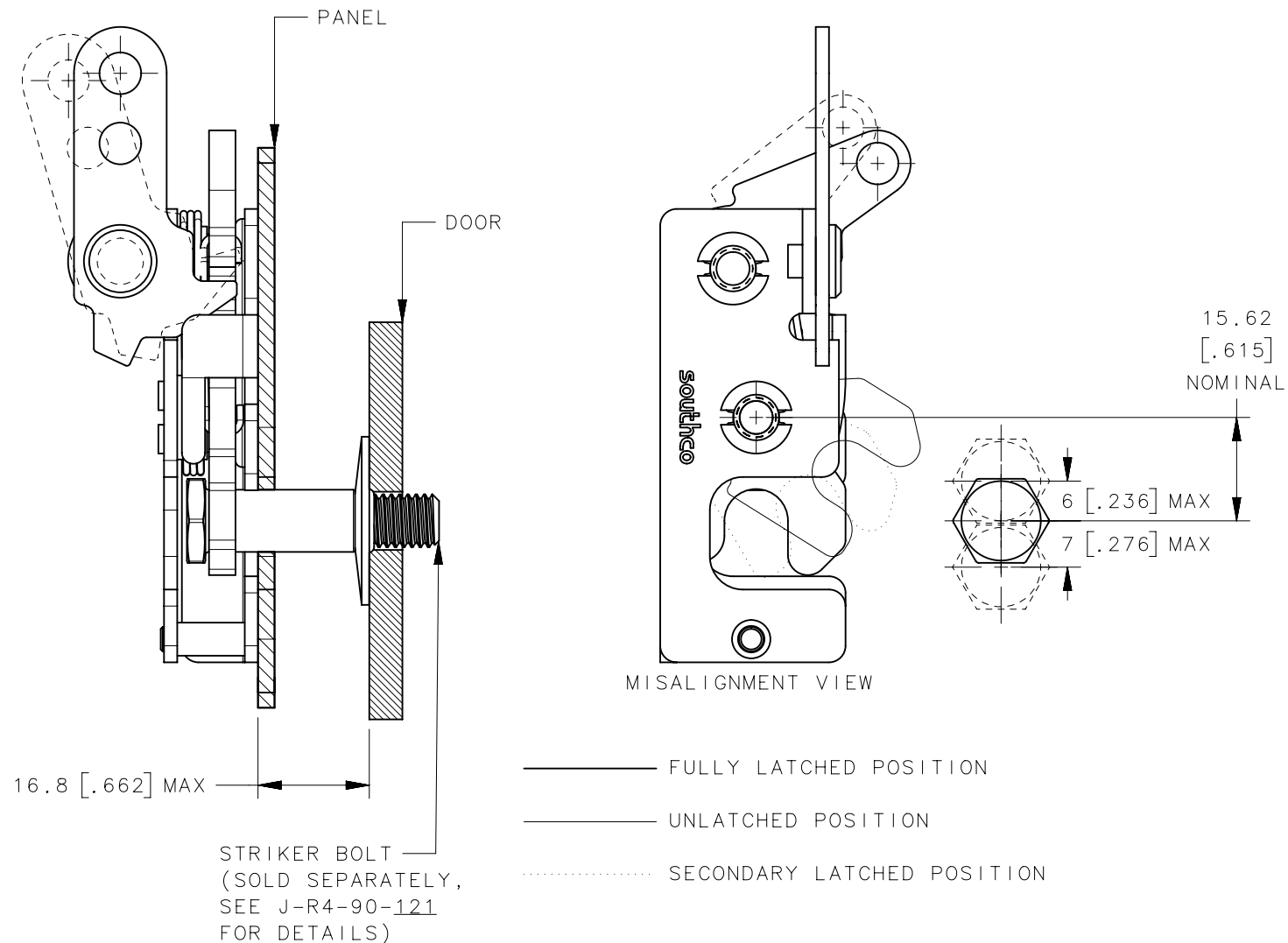
STAGE & ACTUATION	MOUNTING STYLE	BUMPER OPTION
2 - SINGLE STAGE, LEFT HAND	0 - Ø7.2 [.283] THRU	1 - STANDARD (WITHOUT BUMPER)
4 - DUAL STAGE, LEFT HAND	1 - 1/4-20 THREAD	5 - INTEGRATED BUMPER
	2 - M6x1 THREAD	

THIRD ANGLE PROJECTION				southco [®] CONNECT · CREATE · INNOVATE	
MILLIMETERS [IN]					
SURFACE AREA		TOLERANCES UNLESS OTHERWISE NOTED		DESCRIPTION R4-10 ROTARY LATCH, TOP PULL WITH SECONDARY TRIGGER, BUMPER OPTIONAL, LH	
VOLUME		ALL DIMENSIONS WITHOUT TOLERANCES ARE FOR REFERENCE ONLY.			
PROPRIETARY ITEM		SIZE	SYSTEM	DWG NO.	
EXCEPT FOR USES EXPRESSLY GRANTED IN WRITING, INFORMATION DISCLOSED HEREON IS CONFIDENTIAL AND ALL RIGHTS, PATENT AND OTHERWISE, ARE RESERVED BY SOUTHCO, INC.		B	NX	J-R4-10-8L	
PER ASME Y14.5M-1994		DRAWN BY	DATE	SCALE	SHEET
		CMG/DGJ	11JUN2015	1:1	1 OF 3

REVISION HISTORY			
REV	DATE	BY	DESCRIPTION
B	03NOV2015	DGJ/ACH	PRN: P2015-2204

STANDARD

WITH INTEGRATED BUMPER

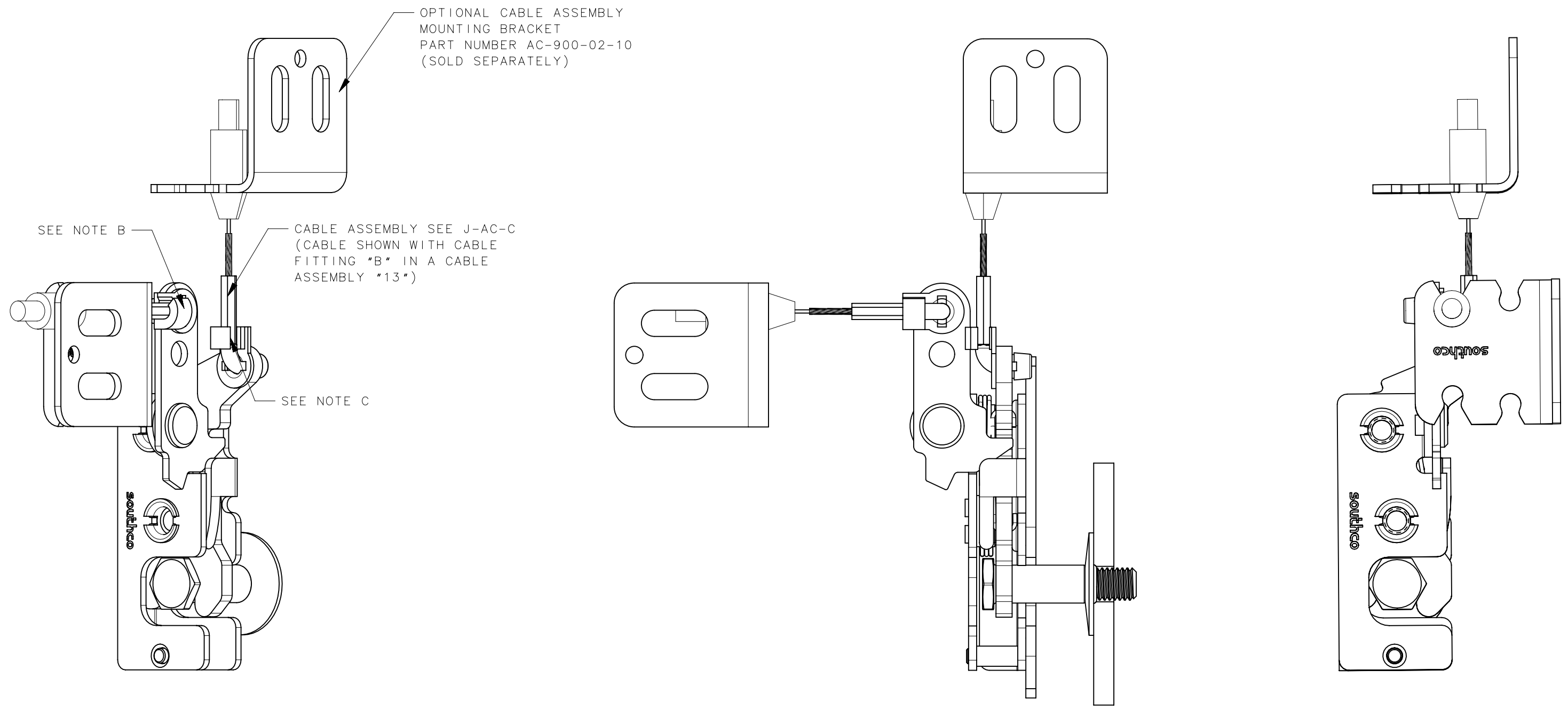


- NOTES:
- A. THE TOLERANCE BETWEEN THE LATCH AND STRIKER BOLT ASSUMES A NON-RIGID DOOR INSTALLATION THAT WILL ALLOW THE DOOR TO MOVE INTO THE NOMINAL POSITION DURING LATCHING. RIGID DOORS MUST HAVE THE STRIKER INSTALLED PER THE PANEL PREPARATION RECOMMENDATION.
 - B. THE MISALIGNMENT VIEW ASSUMES THE LATCH IS CONNECTED TO A PERFECTLY RIGID DOOR AND HINGE; THEREFORE, THERE IS NO DOOR AND/OR HINGE SLACK ASSOCIATED WITH THESE DIMENSIONS. THE MISALIGNMENT VIEW DOES NOT TAKE FLEXING OF THE STRIKER BOLT INTO ACCOUNT.

R4-10-X0-80X-10	Ø 7.2mm THRU	Ø 7.2 [.299]
R4-10-X1-80X-10	1/4-20 THREAD	Ø 6.8 [.268]
R4-10-X2-80X-10	M6x1 THREAD	Ø 6.4 [.252]
ASSEMBLY PART NUMBER	MOUNTING STYLE	MINIMUM PANEL HOLES

THIRD ANGLE PROJECTION			
MILLIMETERS [IN]			
TOLERANCES UNLESS OTHERWISE NOTED		DESCRIPTION	
ALL DIMENSIONS WITHOUT TOLERANCES ARE FOR REFERENCE ONLY.		R4-10 ROTARY LATCH, TOP PULL WITH SECONDARY TRIGGER, BUMPER OPTIONAL, LH	
SIZE	SYSTEM	DWG NO.	
B	NX	J-R4-10-8L	
PER ASME Y14.5M-1994		DRAWN BY	SCALE
		CMG/DGJ	1:1
		DATE	SHEET
		11JUN2015	2 OF 3

REVISION HISTORY			
REV	DATE	BY	DESCRIPTION
B	03NOV2015	DGJ/ACH	PRN: P2015-2204

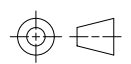


NOTES:

A. FOR OPTIONAL LINK RETAINERS (SOLD SEPARATELY), SEE J-R4-0-43922

B. FOR LEVER RETAINER ONLY, USE R4-0-43922

C. FOR TRIGGER RETAINER ONLY, USE R4-0-43922-2

THIRD ANGLE PROJECTION 		southco [®] CONNECT • CREATE • INNOVATE	
MILLIMETERS [IN]			
SURFACE AREA mm ²		DESCRIPTION R4-10 ROTARY LATCH, TOP PULL WITH SECONDARY TRIGGER, BUMPER OPTIONAL, LH	
VOLUME mm ³		SIZE SYSTEM DWG NO. B NX J-R4-10-8L	
PROPRIETARY ITEM <small>EXCEPT FOR USES EXPRESSLY GRANTED IN WRITING, INFORMATION DISCLOSED HEREON IS CONFIDENTIAL AND ALL RIGHTS, PATENT AND OTHERWISE, ARE RESERVED BY SOUTHCO, INC.</small>		SCALE SHEET 1:1 3 OF 3	
PER ASME Y14.5M-1994		DRAWN BY DATE CMG/DGJ 11JUN2015	