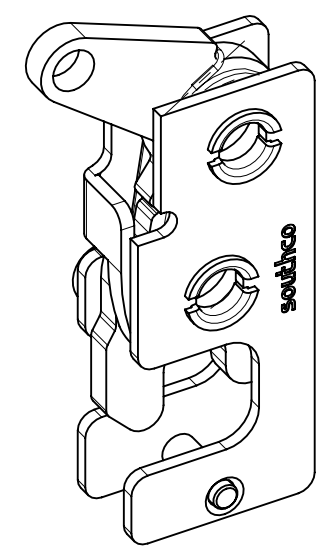
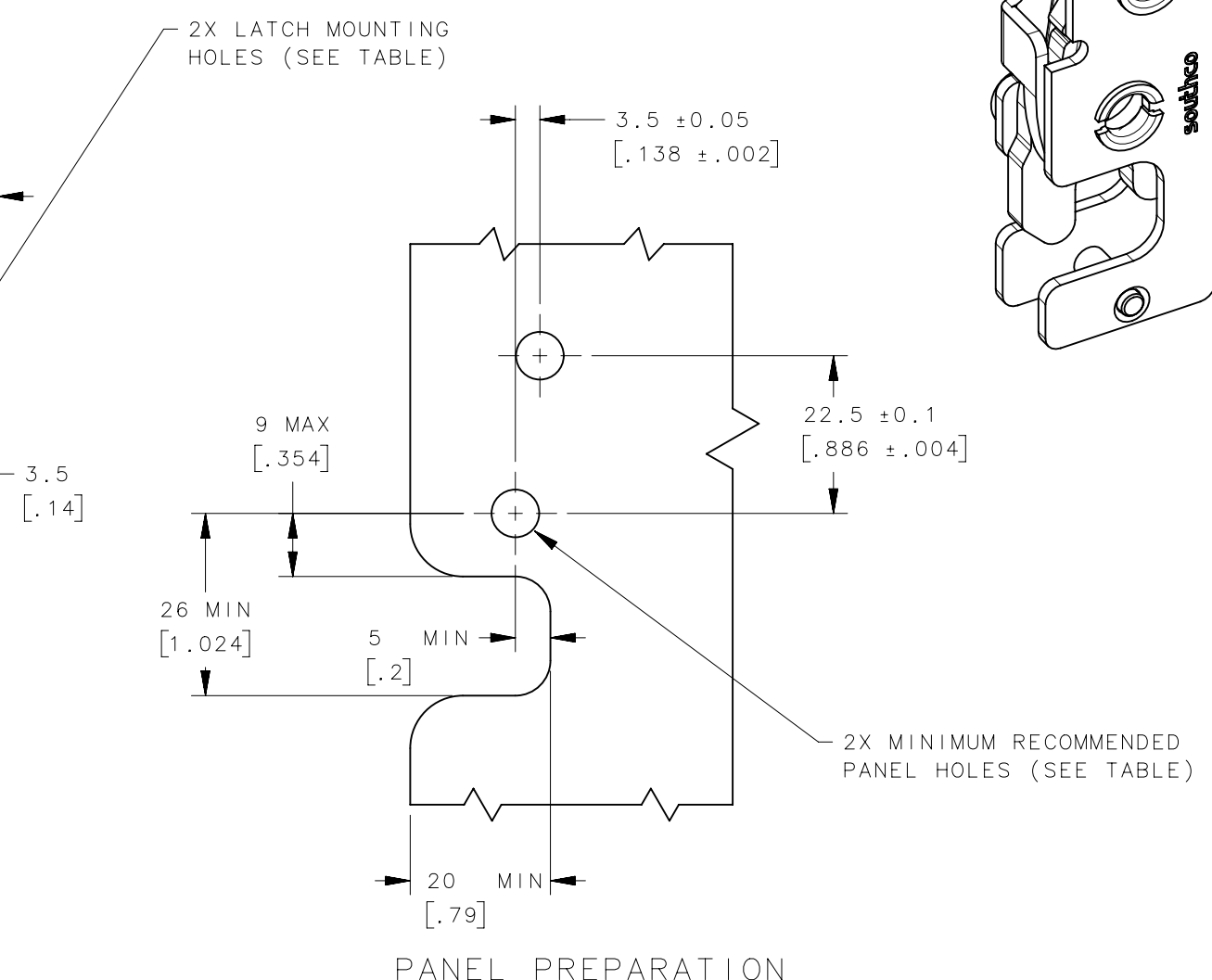
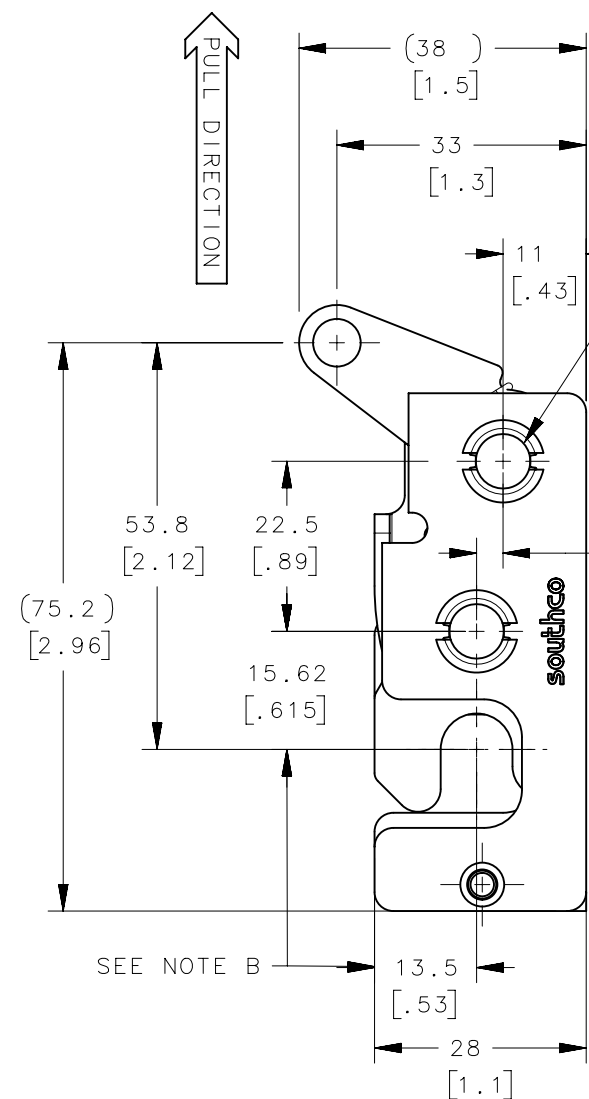
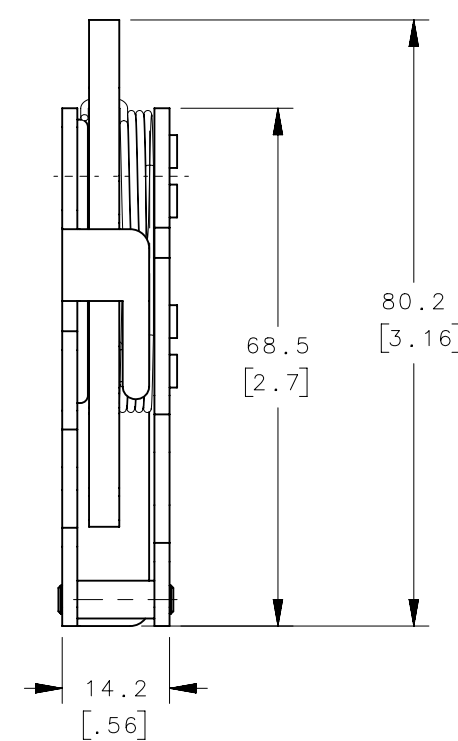
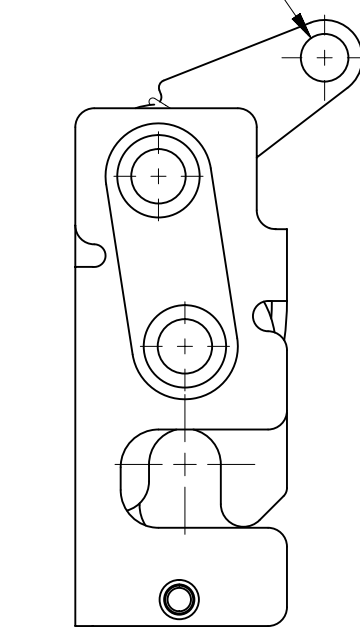


REVISION HISTORY			
REV	DATE	BY	DESCRIPTION
C	24JAN2014	ACH/ASM	PRN: P2014-0102

Ø6.3 ±0.1
[.25 ±.004]



ASSEMBLY R4-10-30-601-10 SHOWN

NOTES:

A. MATERIAL AND FINISH:

- HOUSING, LEVER AND INTERNAL COMPONENTS:
MATERIAL - STEEL
-10 ZINC PLATED, BRIGHT CHROMATE
-77 ZINC NICKEL, BRIGHT CHROMATE
- PAWL AND TRIGGER:
MATERIAL - HARDENED STEEL
-10 ZINC PLATED, BRIGHT CHROMATE
-77 ZINC NICKEL, BRIGHT CHROMATE
ZINC PLATE CHROMATE.
- SPRING: STAINLESS STEEL, PASSIVATED

B. THESE DIMENSIONS REQUIRED FOR MOUNTING STRIKER BOLT.

R4-10-30-401-77	Ø 7.2mm THRU	SEE NOTE A	SEE NOTE A	
R4-10-31-401-77	1/4-20 THREAD	SEE NOTE A	SEE NOTE A	
R4-10-32-401-77	M6 THREAD	SEE NOTE A	SEE NOTE A	
R4-10-30-401-10	Ø 7.2mm THRU	SEE NOTE A	SEE NOTE A	
R4-10-31-401-10	1/4-20 THREAD	SEE NOTE A	SEE NOTE A	
R4-10-32-401-10	M6 THREAD	SEE NOTE A	SEE NOTE A	
ASSEMBLY PART NUMBER	LATCH MOUNTING HOLE	MATERIAL	FINISH	GENERAL NOTES

THIRD ANGLE PROJECTION					
MILLIMETERS [IN]					
SURFACE AREA	TOLERANCES UNLESS OTHERWISE NOTED ALL DIMENSIONS WITHOUT TOLERANCES ARE FOR REFERENCE ONLY.			DESCRIPTION R4-10 2-STAGE MINI ROTARY LATCH WITH TRIGGER HOLE - RIGHT HAND	
VOLUME				SIZE B	SYSTEM NX
PROPRIETARY ITEM	PER ASME Y14.5M-1994			DRAWN BY DJK	DATE 26DEC2012
EXCEPT FOR USES EXPRESSLY GRANTED IN WRITING, INFORMATION DISCLOSED HEREON IS CONFIDENTIAL AND ALL RIGHTS, PATENT AND OTHERWISE, ARE RESERVED BY SOUTHCO, INC.				SCALE 1:1	SHEET 1 OF 3

6

5

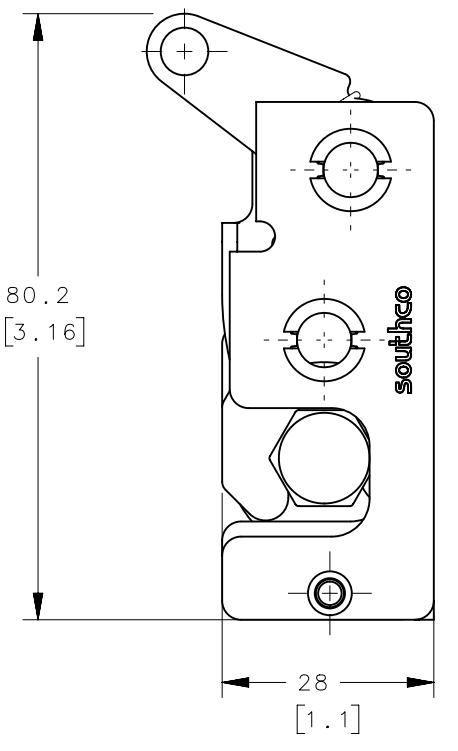
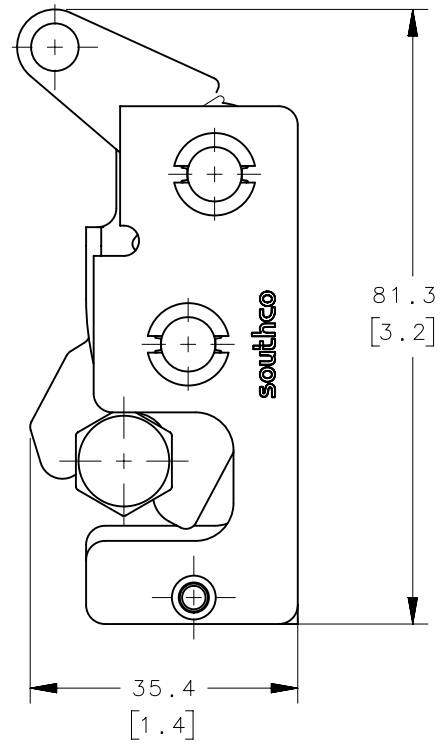
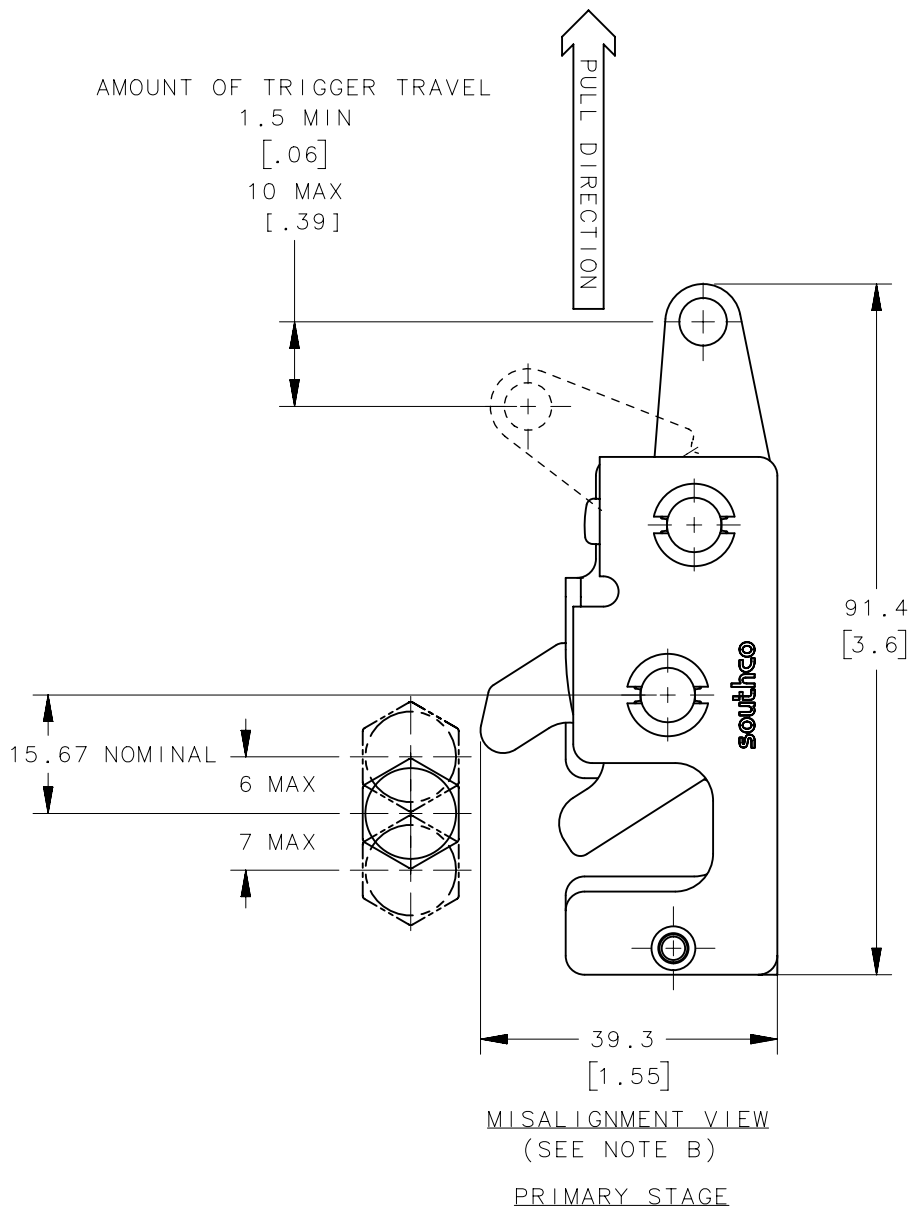
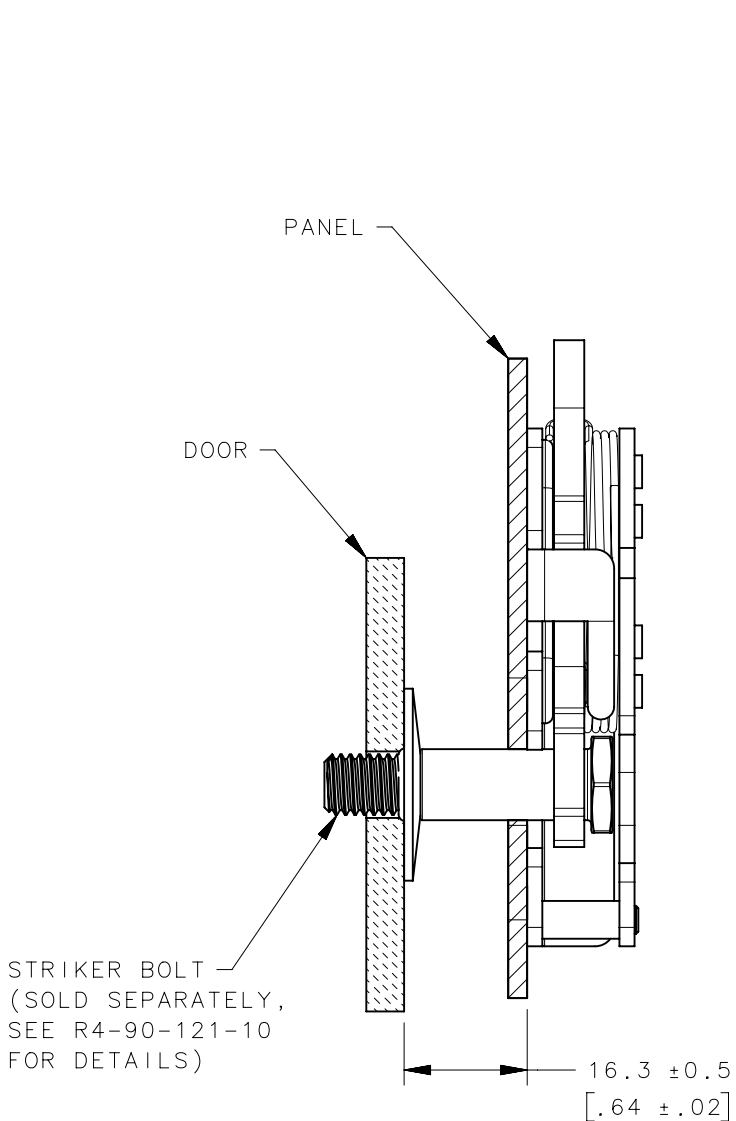
4

3

2

1

REVISION HISTORY			
REV	DATE	BY	DESCRIPTION
C	24JAN2014	ACH/ASM	PRN: P2014-0102



ASSEMBLY R4-10-30-601-10 SHOWN

NOTES:

- A. THE TOLERANCE BETWEEN THE LATCH AND STRIKER BOLT ASSUMES A NON-RIGID DOOR INSTALLATION THAT WILL ALLOW THE DOOR TO MOVE INTO THE NOMINAL POSITION DURING LATCHING. RIGID DOORS MUST HAVE THE STRIKER INSTALLED PER THE PANEL PREPARATION RECOMMENDATION.
- B. THE MISALIGNMENT VIEW ASSUMES THE LATCH IS CONNECTED TO A PERFECTLY RIGID DOOR AND HINGE; THEREFORE, THERE IS NO DOOR AND/OR HINGE SLACK ASSOCIATED WITH THESE DIMENSIONS. THE MISALIGNMENT VIEW DOES NOT TAKE FLEXING OF THE STRIKER BOLT INTO ACCOUNT.

ASSEMBLY PART NUMBER	LATCH MOUNTING HOLE	MINIMUM RECOMMENDED PANEL HOLE	GENERAL NOTES
R4-10-30-601-77	∅ 7.2mm THRU	∅ 7.6 [.299]	
R4-10-31-601-77	1/4-20 THREAD	∅ 6.8 [.268]	
R4-10-32-601-77	M6 THREAD	∅ 6.4 [.252]	
R4-10-30-601-10	∅ 7.2mm THRU	∅ 7.6 [.299]	
R4-10-31-601-10	1/4-20 THREAD	∅ 6.8 [.268]	
R4-10-32-601-10	M6 THREAD	∅ 6.4 [.252]	

THIRD ANGLE PROJECTION				southco [®] CONNECT • CREATE • INNOVATE		
MILLIMETERS [IN]						
TOLERANCES UNLESS OTHERWISE NOTED	DESCRIPTION R4-10 2-STAGE MINI ROTARY LATCH WITH TRIGGER HOLE - RIGHT HAND					
ALL DIMENSIONS WITHOUT TOLERANCES ARE FOR REFERENCE ONLY.	SIZE B	SYSTEM NX	DWG NO. J-R4-10-30-601	SCALE 1:1	SHEET 2 OF 3	
PER ASME Y14.5M-1994	DRAWN BY DJK	DATE 26DEC2012				

6

5

4

3

2

1

6

5

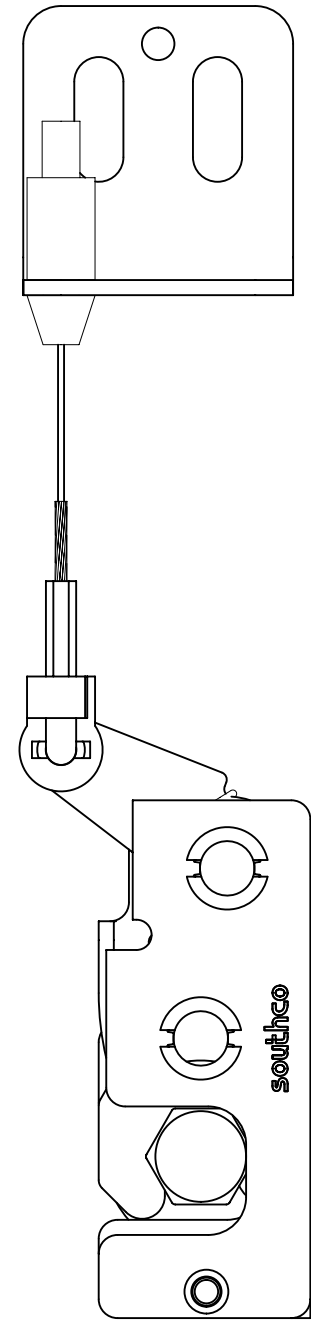
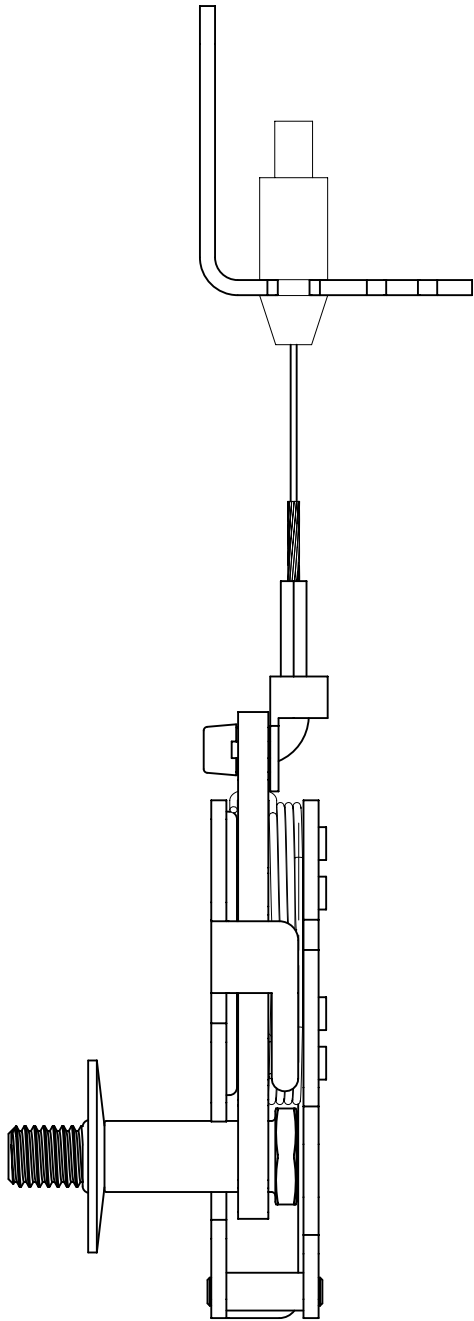
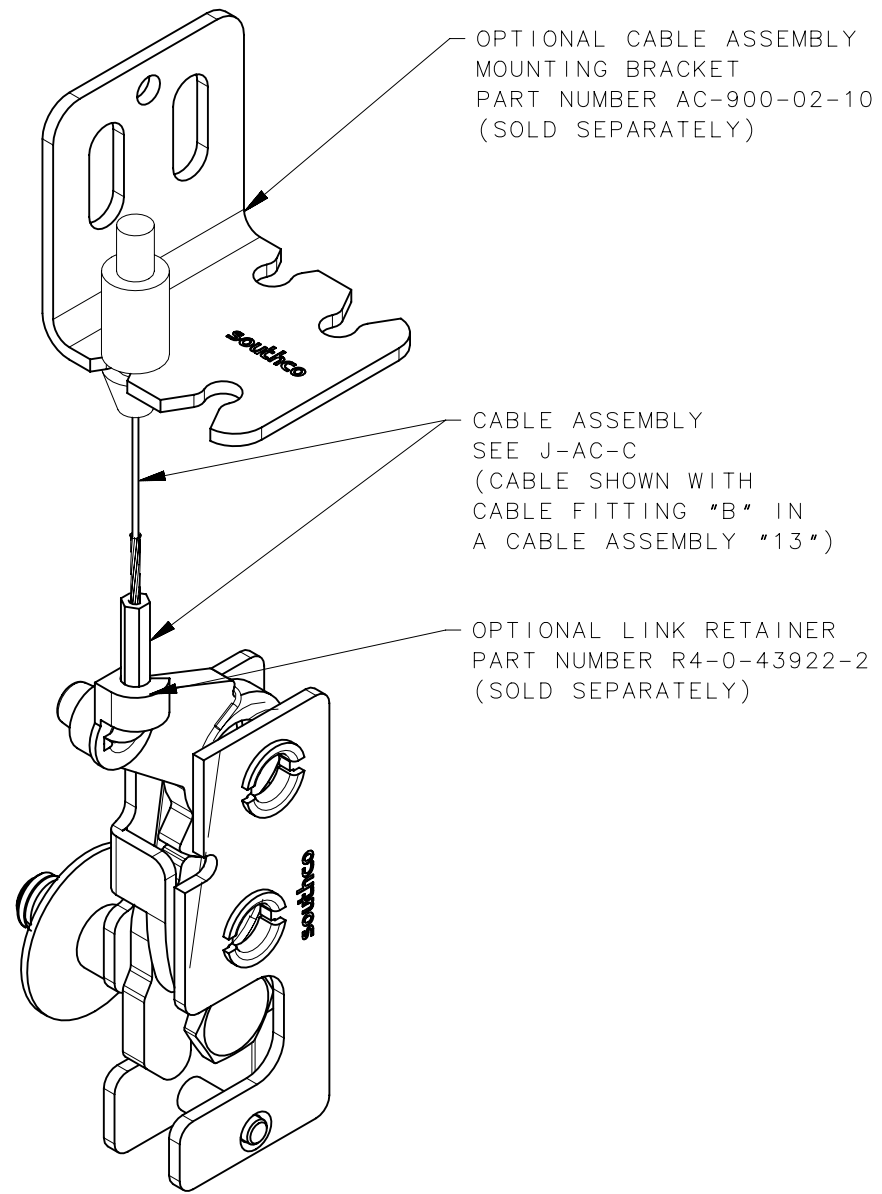
4

3

2

1

REVISION HISTORY			
REV	DATE	BY	DESCRIPTION
C	24JAN2014	ACH/ASM	PRN: P2014-0102



ASSEMBLY R4-10-30-601-10 SHOWN

R4-10-30-401-77	Ø 7.2mm THRU	Ø 7.6 [.299]	
R4-10-31-401-77	1/4-20 THREAD	Ø 6.8 [.268]	
R4-10-32-401-77	M6 THREAD	Ø 6.4 [.252]	
R4-10-30-401-10	Ø 7.2mm THRU	Ø 7.6 [.299]	
R4-10-31-401-10	1/4-20 THREAD	Ø 6.8 [.268]	
R4-10-32-401-10	M6 THREAD	Ø 6.4 [.252]	
ASSEMBLY PART NUMBER	LATCH MOUNTING HOLE	MINIMUM RECOMMENDED PANEL HOLE	GENERAL NOTES

THIRD ANGLE PROJECTION				southco [®] CONNECT • CREATE • INNOVATE			
MILLIMETERS [IN]							
SURFACE AREA	TOLERANCES UNLESS OTHERWISE NOTED			DESCRIPTION R4-10 2-STAGE MINI ROTARY LATCH WITH TRIGGER HOLE - RIGHT HAND			
VOLUME	ALL DIMENSIONS WITHOUT TOLERANCES ARE FOR REFERENCE ONLY.						
PROPRIETARY ITEM	SIZE	SYSTEM	DWG NO.	J-R4-10-30-601			
EXCEPT FOR USES EXPRESSLY GRANTED IN WRITING, INFORMATION DISCLOSED HEREON IS CONFIDENTIAL AND ALL RIGHTS, PATENT AND OTHERWISE, ARE RESERVED BY SOUTHCO, INC.	B	NX		DRAWN BY	DATE	SCALE	SHEET
	PER ASME Y14.5M-1994	DJK	26DEC2012	1:1	3 OF 3		

6

5

4

3

2

1